

M 103-73

FILED

JL

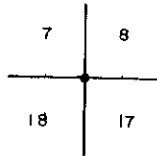
APR 10 1987

OREGON CORNER RESTORATION FORM
Section 7 Township 23S Range 7W
County Douglas Date 04-03-86

COUNTY SURVEYOR
DOUGLAS COUNTY, ORE.

Corner Designation

S.E. Corner
Section 7



- Condition Report Only
- Not Found
- Renewed
- Unrecorded
- Surveyed In
- Referenced Out

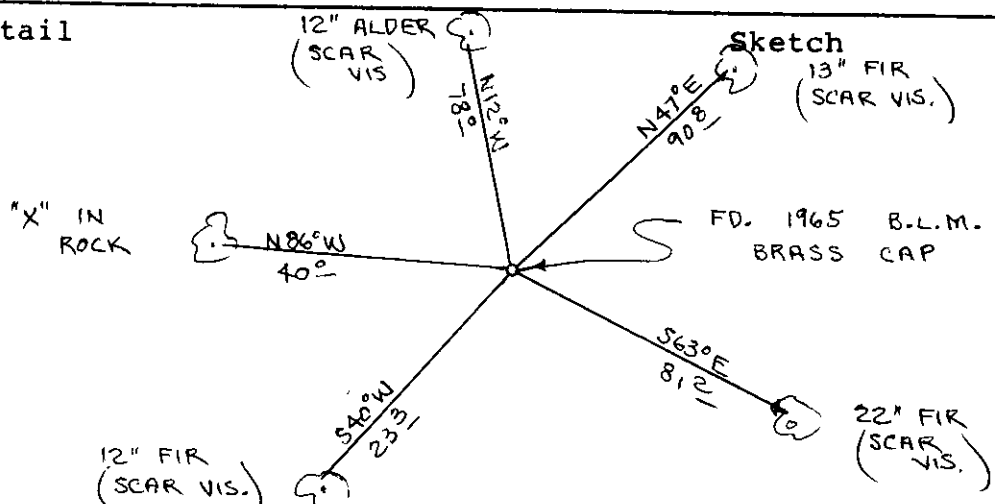
Previous Renewals/Surveys, etc. Original Survey by Ambrose N. Armstrong and Thomas H. Hutchinson in 1858. Also a B.L.M. Cadastral Survey in 1965.

Monument(s) & Accessories Found: (Condition and Source)

Found 1965 B.L.M. Brass Cap set firmly in the ground. Cap covered with 18" of loose shale.

- 12" Fir , S40W, 23.3' (Scar Vis.), 1940 BT. Rec. S40½W, 23.1'
- 12" Alder , N12W, 78.0' (Scar Vis.), 1965 BT. Rec. N12½W, 77.9'
- 13" Fir , N47E, 90.8' (Scar Vis.), 1965 BT. Rec. N47E , 90.4'
- 22" Fir , S63E, 81.2' (Scar Vis.), 1965 BT. Rec. S63½E, 81.8'
- "X" in Rock, N86W, 40.0' , 1978 BO. Rec. N86W, 39.8'

Monument Detail



Monument Set (Procedures and Description)

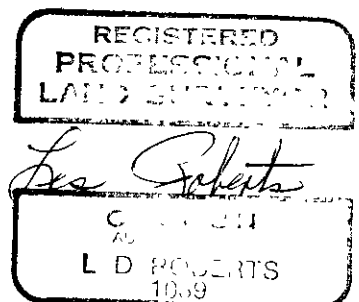
New Accessories

Painted all B.T.'s red.

Location & Comments

Corner lies at the base of a bluff and in the middle of a loose shale slide. Compass Declination 20½
 Firm/Agency Roberts Surveying Inc.
 Address 29 West 29th St. Eugene, Oregon 97405
 Party Chief Les Roberts
 Notes Ted Baker
 Witness Ted Baker

Surveyor's Seal



M 103-73

FILED

APR 10 1987

OREGON CORNER RESTORATION FORM

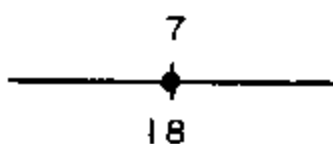
Section 7 Township 23S Range 7W

County Douglas Date 02-05-87

COUNTY SURVEYOR
DOUGLAS COUNTY, ORE.

Corner Designation

South $\frac{1}{4}$ Corner
Section 7



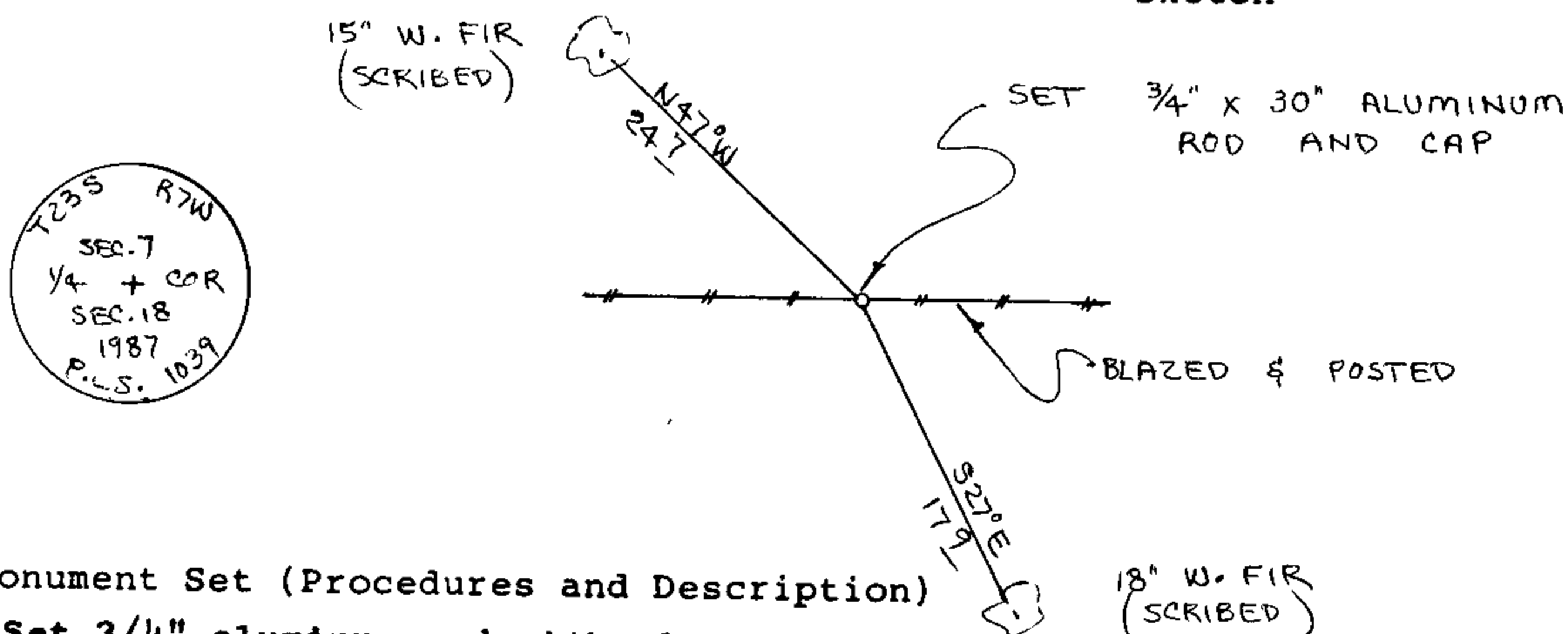
- Condition Report Only
- Not Found
- Renewed
- Unrecorded
- Surveyed In
- Referenced Out

Previous Renewals/Surveys, etc. Original Survey by Ambrose N. Armstrong and Thomas H. Hutchinson in 1858.

Monument(s) & Accessories Found: (Condition and Source)
No Evidence of Original Corner Found.

Monument Detail

Sketch



Monument Set (Procedures and Description)

Set 3/4" aluminum rod with aluminum cap. Buried purple magnetic marker under 3/4" rod. Set metal fence post, with land monument survey sign attached to, beside aluminum rod. See filed survey for survey procedures.

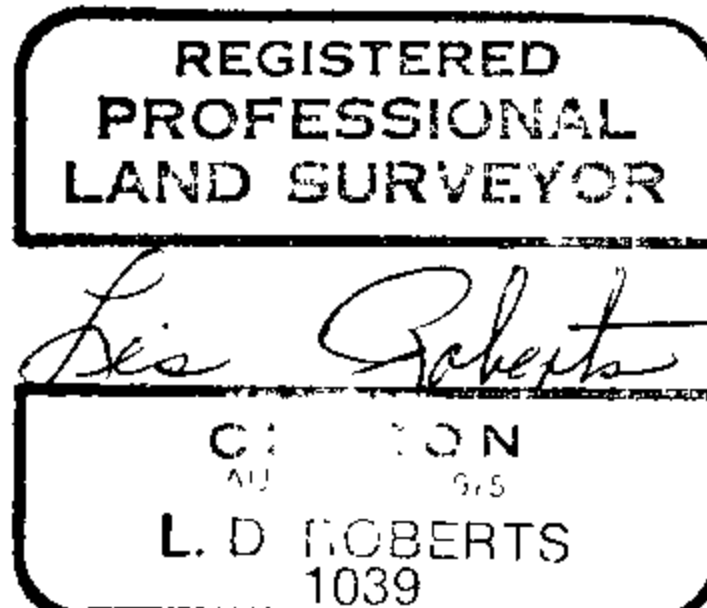
New Accessories

- 15" W. Fir, N47W, 24.7' (Scribed/Painted Red)
- 18" W. Fir, S27E, 17.9' (Scribed/Painted Red)

Location & Comments

Corner lies on North slope about 250 feet South of Umpqua River. Compass Declination 20 $\frac{1}{2}$
Firm/Agency Roberts Surveying Inc.

Surveyor's Seal



Address 29 West 29th St.
Eugene, Oregon 97405
 Party Chief Ted Baker
 Notes Ted Baker
 Witness Jim Metzler

C.S. File No. 63/46-56

#170 4

M103-73

FILED

JH

APR 10 1987

OREGON CORNER RESTORATION FORM

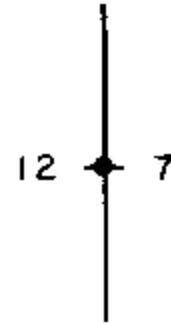
Section 7 Township 23S Range 7W

County Douglas Date 03-25-86

COUNTY SURVEYOR
DOUGLAS COUNTY, ORE.

Corner Designation

West $\frac{1}{4}$ Corner
Section 7



- Condition Report Only
- Not Found
- Renewed
- Unrecorded
- Surveyed In
- Referenced Out

Previous Renewals/Surveys, etc. Original Survey by Ambrose N. Armstrong and Thomas H. Hutchinson in 1858.

Monument(s) & Accessories Found: (Condition and Source)
Corner falls in a cultivated pasture. No evidence of original corner found.

Monument Detail

Sketch

Monument Set (Procedures and Description)

New Accessories

Location & Comments

Compass Declination 20 $\frac{1}{2}$

Firm/Agency Roberts Surveying Inc.

Address 29 West 29th St.

Eugene, Oregon 97405

Party Chief Les Roberts

Notes _____

Witness _____

Surveyor's Seal

REGISTERED
PROFESSIONAL
LAND SURVEYOR

Les Roberts

OREGON
AUGUST 1, 1975
L D ROBERTS
1039

C.S. File No. 63/465c

FILED

OCT 21 1987

OREGON CORNER RESTORATION FORM

Section 7 Township 23S Range 7W

County Douglas Date 03-25-86

COUNTY SURVEYOR
DOUGLAS COUNTY, ORE.

CORNER DESIGNATION

N.W. Corner
Section 7

1	6
12	7

- Condition Report Only
- Not Found
- Renewed
- Unrecorded
- Surveyed In
- Referenced Out

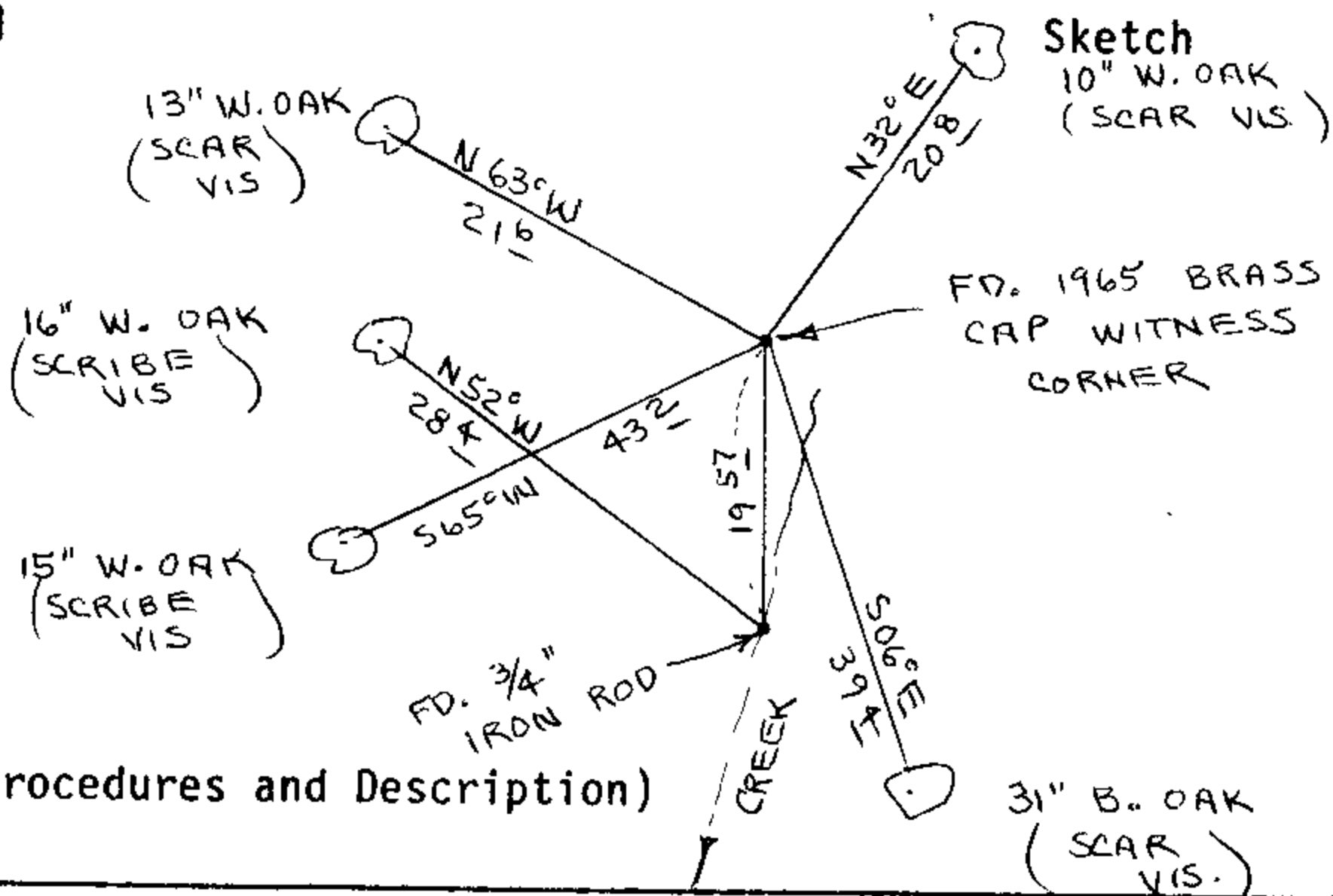
Previous Renewals/Surveys, etc. Original Survey by Ambrose N. Armstrong and Thomas H. Hutchinson in 1858. Also renewal by County Surveyor Cole in 1921. See Volume 2, Page 89.

Monument(s) & Accessories Found: (Condition and Source)

Found 3/4" iron rod set by Douglas County in 1965. Corner Falls in center of small stream. Also found 1965 Douglas County Witness Corner bearing N0° 54' 45" W, 19.57 feet from iron rod.

- 16" White Oak, N52W, 28.4' (Scribe Vis.), 1921 C.S.BT. Rec. V53W, 29.0'
- 10" white Oak. N32E, 20.8' (Scar Vis.) , 1965 W.C.BT. Rec. N33E, 21.3'
- 13" white Oak, N63W, 21.6' (Scar Vis.) , 1965 W.C.BT. Rec. V64W, 22.0'
- 15" white Oak, S65W, 43.2' (Scribe Vis.), 1965 W.C.BT. Rec. S65W, 44.6'
- 31" Black Oak, S06E, 39.4' (Scar Vis.) , 1965 W.C.BT. Rec. S07E, 40.5'

Monument Detail



Monument Set (Procedures and Description)

New Accessories

Set metal fence post, with survey attention sign attached to, beside brass cap witness corner. Painted all B.T.'s red.

Location & Comments

Corner lies on slight Compass Declination 20 1/2
South slope at the Firm/Agency Roberts
bottom of a small creek Surveying Inc.
Creek bears North-South Address 29 West 29th St.
Eugene, Oregon 97405
Party Chief Les Roberts
Notes Les Roberts
Witness Ted Baker

Surveyor's Seal

REGISTERED
PROFESSIONAL
LAND SURVEYOR

Les Roberts
OREGON
AUGUST 27 1975
L. D. ROBERTS
1039

CS63/46-5d

M 103-73

FILED

SL

APR 10 1987

OREGON CORNER RESTORATION FORM

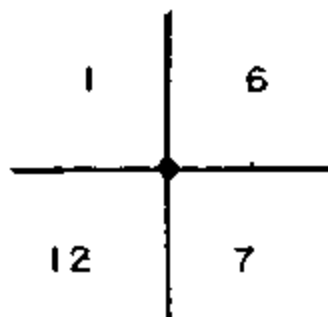
Section 7 Township 23S Range 7W

County Douglas Date 03-25-86

COUNTY SURVEYOR
DOUGLAS COUNTY, ORE.

Corner Designation

N.W. Corner
Section 7



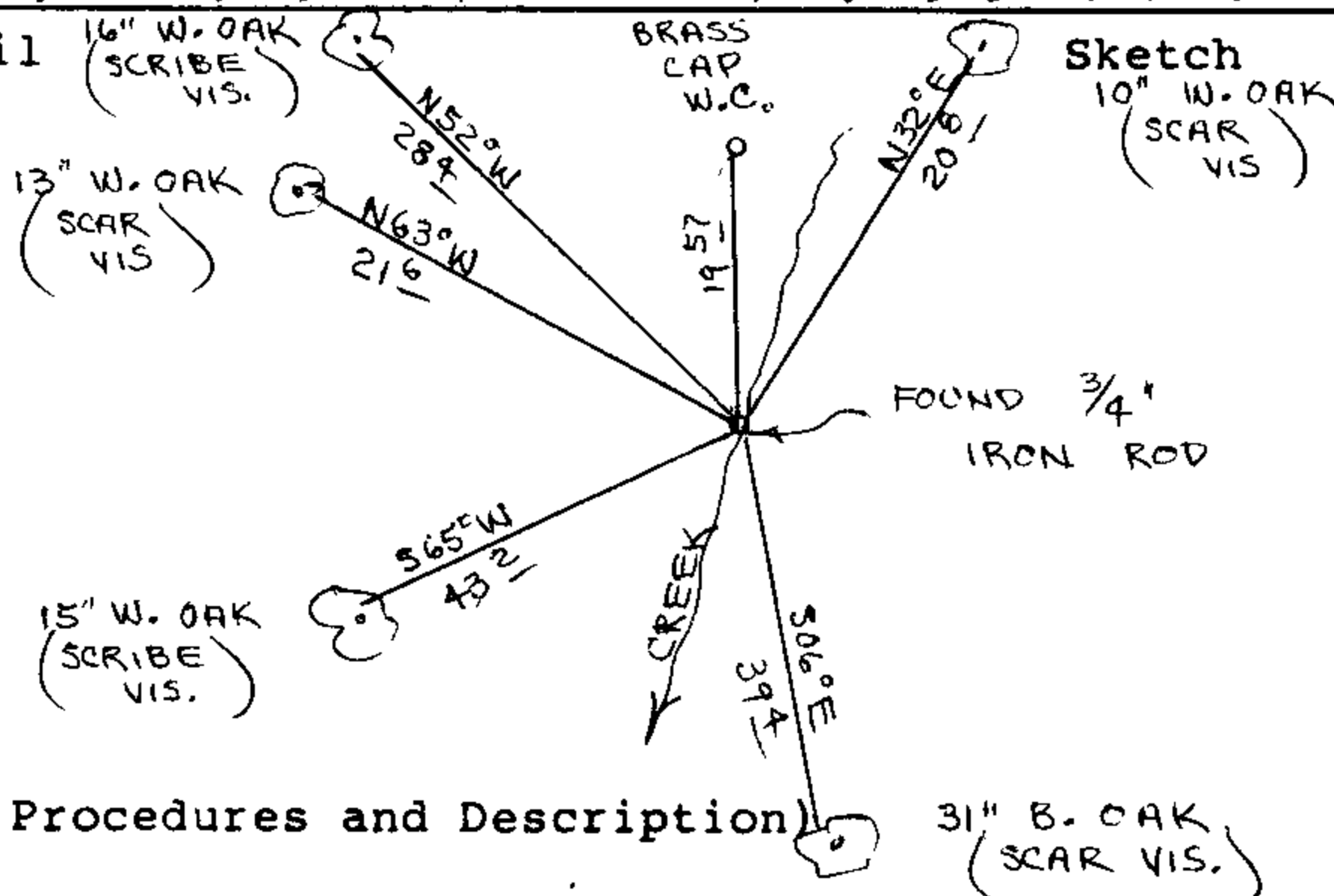
- Condition Report Only
- Not Found
- Renewed
- Unrecorded +
- Surveyed In
- Referenced Out

Previous Renewals/Surveys, etc. Original Survey by Ambrose N. Armstrong and Thomas H. Hutchinson in 1858. Also renewal by County Surveyor Cole in 1921. See Volume 2, Page 89.

Monument(s) & Accessories Found: (Condition and Source)
Found 3/4" iron rod set by Douglas County in 1965. Corner falls in center of small stream. Also found 1965 Douglas County Witness Corner bearing N 0° 54' 45" W, 19.57 feet from iron rod.

- 10" White Oak, N32E, 20.8' (Scar Vis.), 1965 W.C.BT. Rec. N33E, 21.3'
- 13" White Oak, N63W, 21.6' (Scar Vis.), 1965 W.C.BT. Rec. N64W, 22.0'
- 15" White Oak, S65W, 43.2' (Scribe Vis.), 1965 W.C.BT. Rec. S65W, 44.6'
- 16" White Oak, N52W, 28.4' (Scribe Vis.), 1921 C.S.BT. Rec. N53W, 29.0'
- 31" Black Oak, S06E, 39.4' (Scar Vis.), 1965 W.C.BT. Rec. S07E, 40.5'

Monument Detail



Monument Set (Procedures and Description)

New Accessories

Set metal fence post, with survey attention sign attached to, beside brass cap witness corner. Painted all B.T.'s red.

Location & Comments

Corner lies on slight South slope at the bottom of a small creek. Creek bears North-South

Compass Declination 20 1/2

Firm/Agency Roberts Surveying Inc.

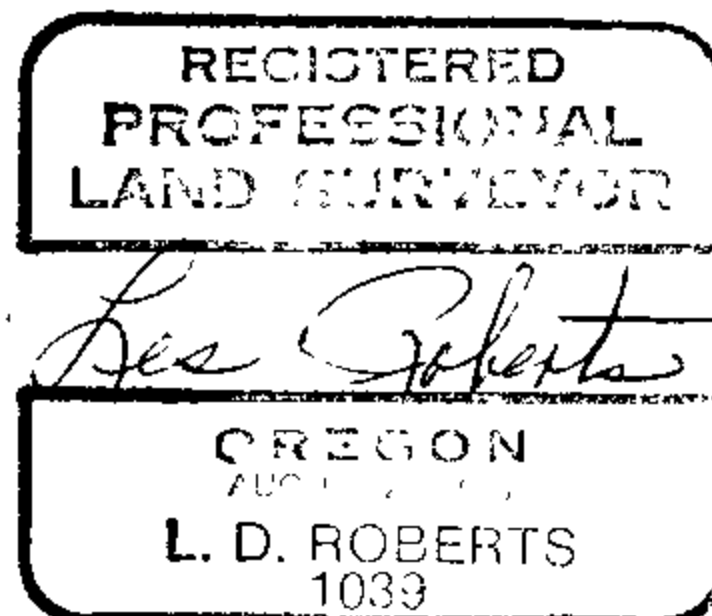
Address 29 West 29th St. Eugene, Oregon 97405

Party Chief Les Roberts

Notes Les Roberts

Witness Ted Baker

Surveyor's Seal



C.S. File No. 63/46-5E

M 103-73

FILED

APR 10 1987

OREGON CORNER RESTORATION FORM

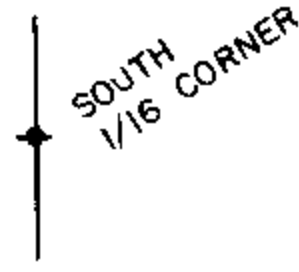
Section 7 Township 23S Range 7W

COUNTY SURVEYOR
DOUGLAS COUNTY, ORE.

County Douglas Date 02-06-87

Corner Designation

South 1/16 Corner
Section 7



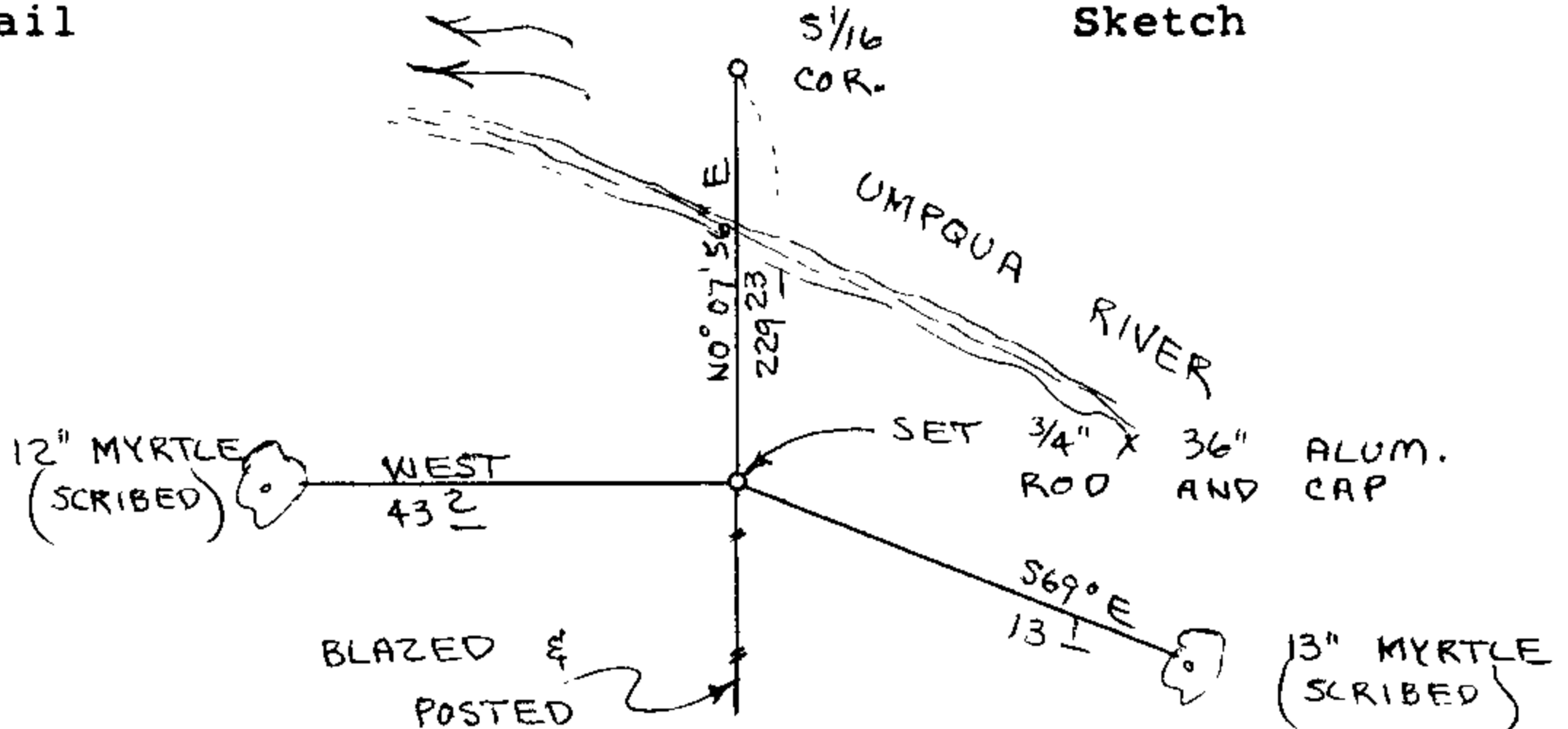
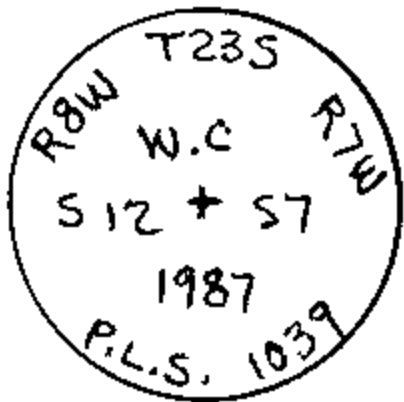
- Condition Report Only
- Not Found
- Renewed
- Unrecorded
- Surveyed In
- Referenced Out

Previous Renewals/Surveys, etc. Original Survey by Ambrose N. Armstrong and Thomas H. Hutchinson in 1858.

Monument(s) & Accessories Found: (Condition and Source)
Corner never set.

Monument Detail

Sketch



Monument Set (Procedures and Description)

South 1/16 corner on West line of Section 7 falls in the Umpqua River. Set a witness corner on South river bank. True corner bears N 0° 07' 56" E, 229.23 feet from witness corner.
Set 3/4" x 36" Aluminum rod and aluminum cap. Buried purple magnetic marker under 36" rod. See filed survey for procedures.

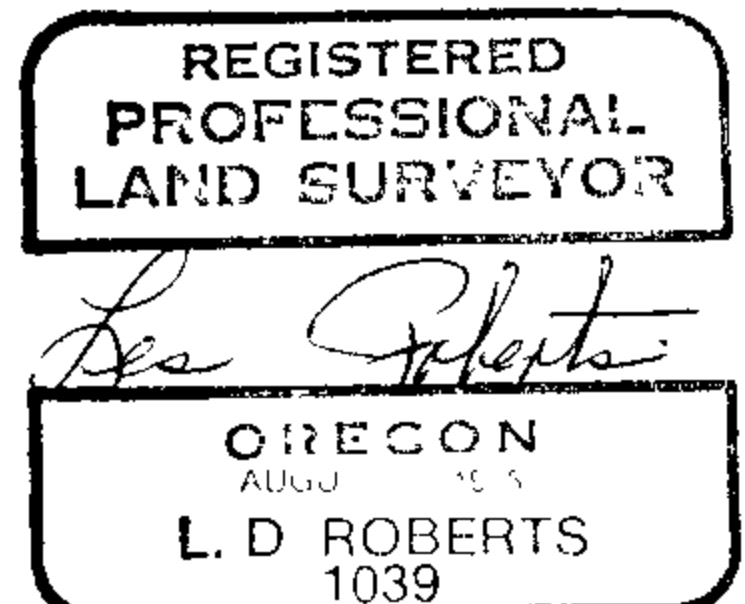
New Accessories

12" Myrtle, West, 43.2' (Scribed/Painted Red)
13" Myrtle, S69E, 13.1' (Scribed/Painted Red)
Set aluminum fence post, with land monument survey sign attached to, beside aluminum rod.

Location & Comments

Surveyor's Seal

Compass Declination 20 1/2
Firm/Agency Roberts Surveying Inc.
Address 29 West 20th St. Eugene, Oregon 97405
Party Chief Ted Baker
Notes Ted Baker
Witness Jim Metzler



C.S. File No. 63/46-SF

M 103-73

FILED

APR 10 1987

OREGON CORNER RESTORATION FORM

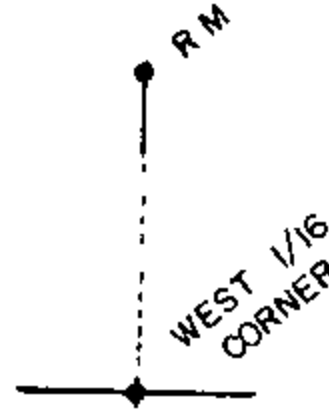
Section 7 Township 23S Range 7W

County Douglas Date 02-06-87

COUNTY SURVEYOR
DOUGLAS COUNTY, ORE.

Corner Designation

West 1/16 Corner
Section 7

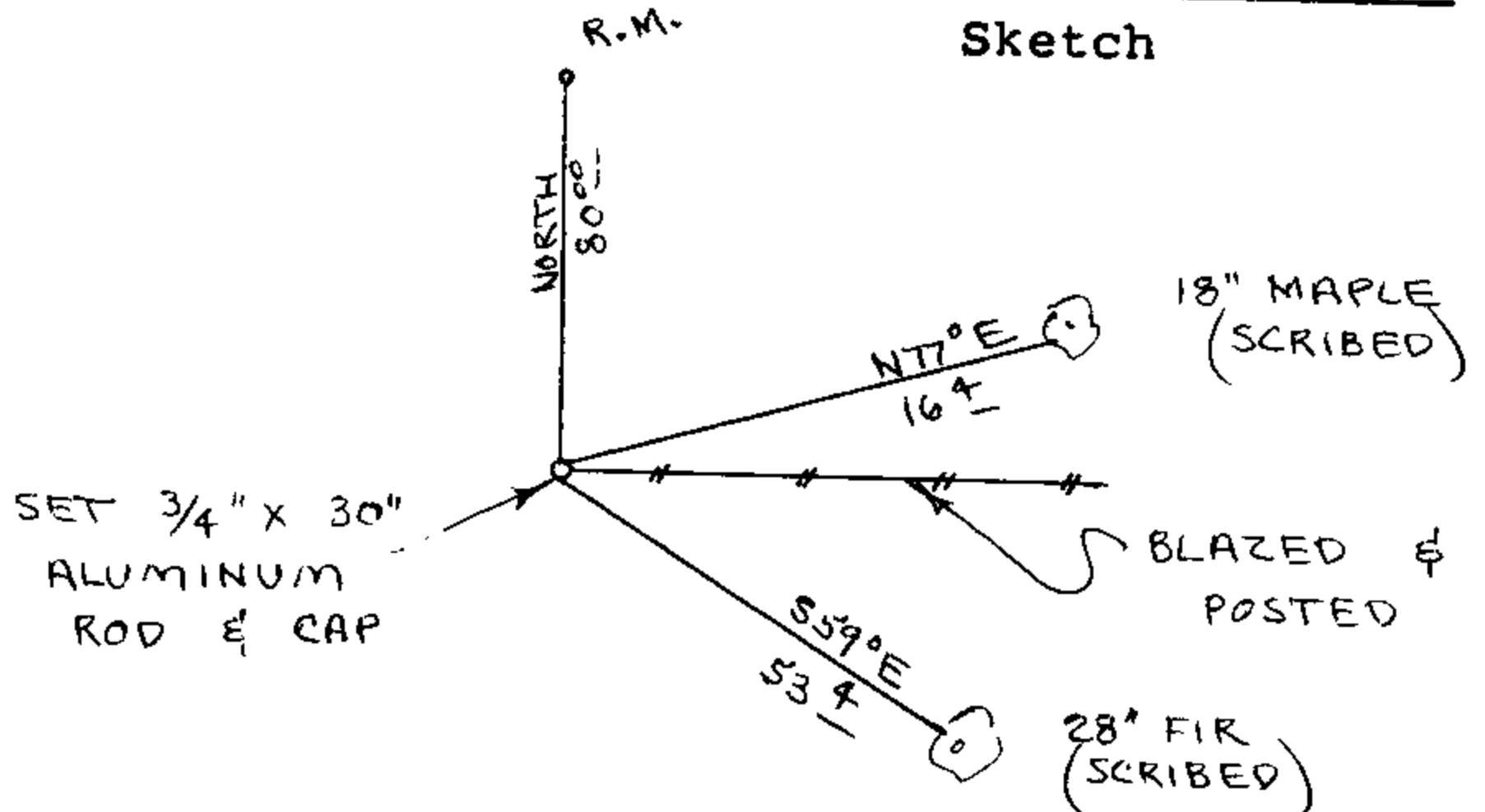


- Condition Report Only
- Not Found
- Renewed
- Unrecorded
- Surveyed In
- Referenced Out

Previous Renewals/Surveys, etc. Original Survey by Ambrose N. Armstrong and Thomas H. Hutchinson in 1858.

Monument(s) & Accessories Found: (Condition and Source)
Corner Never Set.

Monument Detail



Monument Set (Procedures and Description)

Set 3/4" x 30" Aluminum Rod with Aluminum Cap. Buried purple magnetic marker under 30" rod. Set aluminum fence post, with land monument survey sign attached to, beside aluminum rod. See filed survey for survey procedures.

New Accessories

- 18" Maple, N77E, 16.4' (Scribed/Painted Red)
- 28" Fir, S59E, 53.4' (Scribed/Painted Red)

Location & Comments

Corner lies on steep North slope about 100' South of the Umpqua River. Compass Declination 20 1/2
Firm/Agency Roberts Surveying Inc.
Address 29 West 29th St. Eugene, Oregon 97405
Party Chief Ted Baker
Notes Ted Baker
Witness Les Roberts

Surveyor's Seal



M103-73

FILED

APR 10 1987

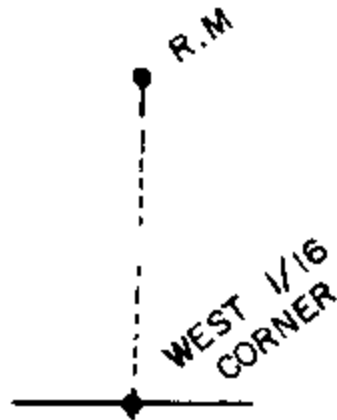
OREGON CORNER RESTORATION FORM

Section 7 Township 23 S Range 7 W

County Douglas Date 02-06-87

COUNTY SURVEYOR
DOUGLAS COUNTY, ORE.

Corner Designation
Reference Monument
to West 1/16 Corner



- Condition Report Only
- Not Found
- Renewed
- Unrecorded
- Surveyed In
- Referenced Out

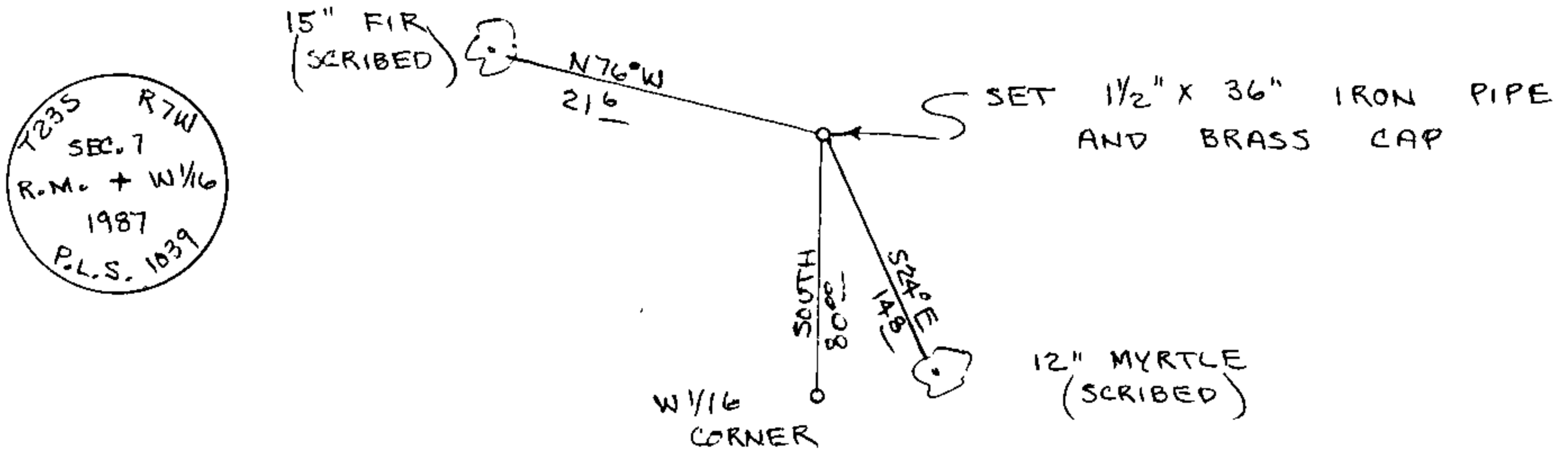
Previous Renewals/Surveys, etc. None

Monument(s) & Accessories Found: (Condition and Source)

Corner Never Set.

Monument Detail

Sketch



Monument Set (Procedures and Description)

Set 1/2" x 36" iron pipe with brass cap. Buried purple magnetic marker under 36" pipe. Set aluminum fence post, with land monument survey sign attached to, beside iron pipe. West 1/16 Corner bears South, 80.00 feet.

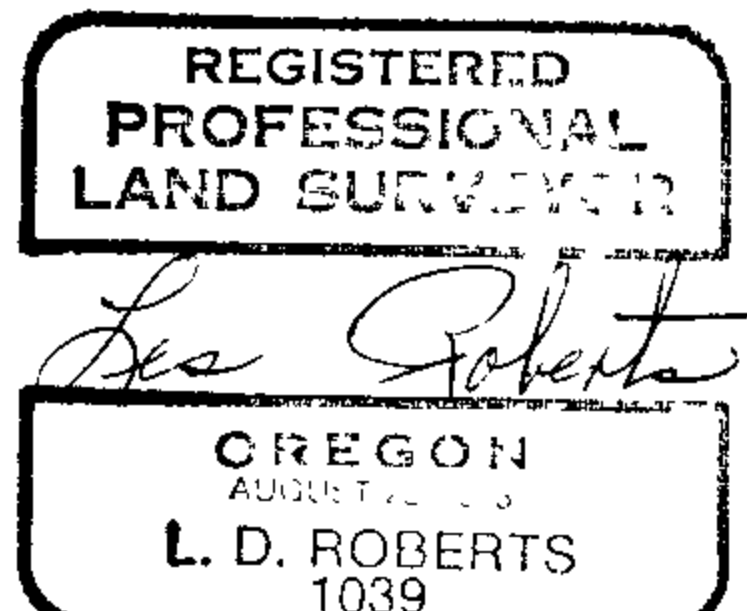
New Accessories

- 12" Myrtle, S24E, 14.8' (Scribed/Painted Red)
- 15" Fir, N76W, 21.6' (Scribed/Painted Red)

Location & Comments

Corner lies on steep North slope about 20 feet South of the Umpqua River. Compass Declination 20 1/2
Firm/Agency Roberts Surveying Inc.
Address 29 West 29th St. Eugene, Oregon 97405
Party Chief Ted Baker
Notes Ted Baker
Witness Jim Metzler

Surveyor's Seal



C.S. File No. 63/46-5h