

M103-36

FILED *JL*

OREGON CORNER RESTORATION FORM

FEB 13 1987 *TF*

Section 18 Township 20S Range 8W

COUNTY SURVEYOR  
DOUGLAS COUNTY, ORE.  
*TF*

County Douglas Date 12-29-86

Corner Designation

North  $\frac{1}{4}$  Corner  
Section 18



- Condition Report Only
- Not Found
- Renewed
- Unrecorded
- Surveyed In
- Referenced Out

Previous Renewals/Surveys, etc. G.L.O. Survey by W.P. Wright in 1883 and G.L.O. Survey by Thomas Tillman in 1954

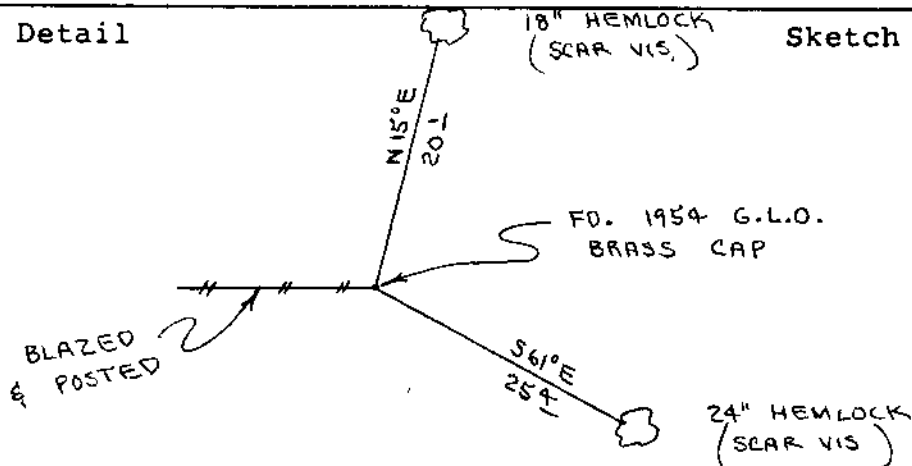
Monument(s) & Accessories Found: (Condition and Source)

Found 1954 G.L.O. Brass Cap set firmly in the ground.

18" Hemlock, N15E, 20.1' (Scar Vis.), 1954 BT. Rec. N15E, 19.1'

24" Hemlock, S61E, 25.4' (Scar Vis.), 1954 BT. Rec. S60 $\frac{1}{4}$ E, 25.1'

Monument Detail



Monument Set (Procedures and Description)

New Accessories

Set metal fence post, with survey attention sign wire to, beside brass cap. Painted all bt's red.

Location & Comments

Corner lies on edge of small bench about 700' North of creek

Compass Declination 20 $\frac{1}{2}$   
Firm/Agency Roberts Surveying Inc.

Address 29 West 29th Street, Eugene, Oregon

Party Chief Les Roberts

Notes Ted Baker

Witness \_\_\_\_\_

Surveyor's Seal

REGISTERED  
PROFESSIONAL  
LAND SURVEYOR

*Les Roberts*

OREGON  
L D ROBERTS  
1039

C.S. File No. 63/46-1A

M103-36

FILED

JK

OREGON CORNER RESTORATION FORM

FEB 13 1987 TF

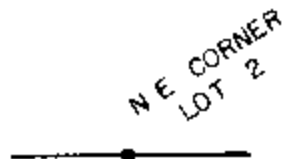
Section 18 Township 20S Range 8W

COUNTY SURVEYOR  
DOUGLAS COUNTY, ORE. TF

County Douglas Date 1-16-87

Corner Designation

(1/16 Corner)  
N.E. Corner Lot 2



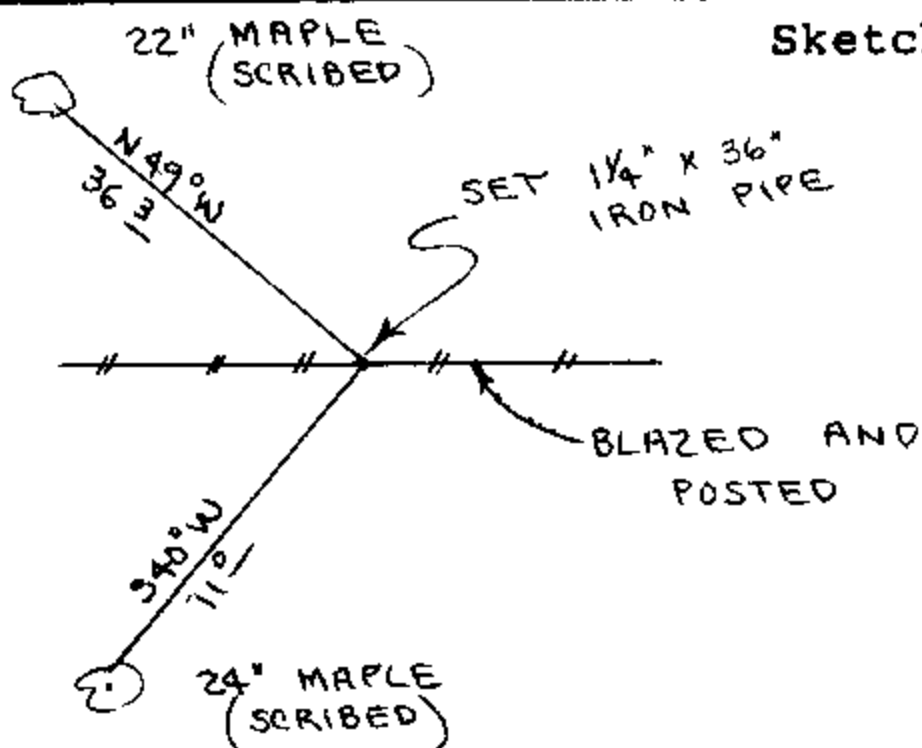
- Condition Report Only
- Not Found
- Renewed
- Unrecorded
- Surveyed In
- Referenced Out

Previous Renewals/Surveys, etc. G.L.O. Survey by W.P. Wright in 1883 and G.L.O. Survey by Thomas Tillman in 1954

Monument(s) & Accessories Found: (Condition and Source)

None

Monument Detail



Monument Set (Procedures and Description)

Set 1 1/4" x 36" Iron Pipe and Brass Cap. Buried Purple Magnetic Marker Under 36" Pipe. See filed survey for survey procedures.

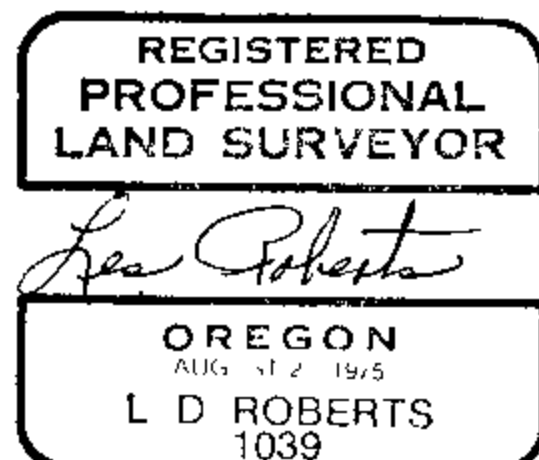
New Accessories

- 22" Maple, N49W, 36.3' (Scribed/Painted Red)
- 24" Maple, S40W, 11.0' (Scribed/Painted Red)
- Set aluminum fence post, with land survey monument sign bolted to, beside iron pipe.

Location & Comments

Corner lies on South Compass Declination 20 1/2  
slope about 250' Firm/Agency Roberts  
North of creek Surveying Inc.  
Address 29 West 29th St.  
Eugene, Oregon 97405  
Party Chief Ted Baker  
Notes  
Witness Jim Metzler

Surveyor's Seal



C.S. File No. 63/46-1b

M 103-36

FILED

FEB 13 1987 TF

OREGON CORNER RESTORATION FORM

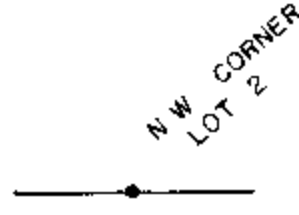
Section 18 Township 20S Range 8W

COUNTY SURVEYOR  
DOUGLAS COUNTY, ORE. TF

County Douglas Date 1-16-87

Corner Designation

(1/16 Corner)  
N.W. Corner Lot 2



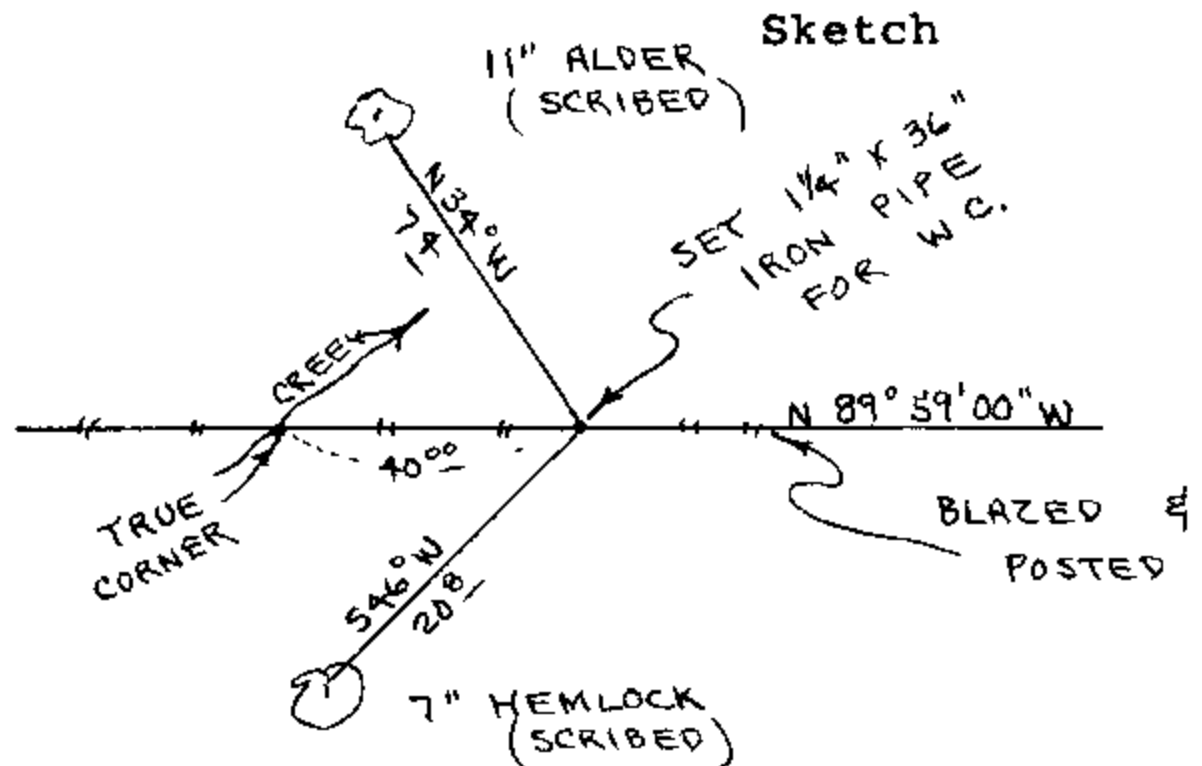
- Condition Report Only
- Not Found
- Renewed
- Unrecorded
- Surveyed In
- Referenced Out

Previous Renewals/Surveys, etc. G.L.O. Survey by W.P. Wright in 1883 and G.L.O. Survey by Thomas Tillman in 1954

Monument(s) & Accessories Found: (Condition and Source)

None

Monument Detail



Monument Set (Procedures and Description)

Set 1 1/4" x 36" Iron Pipe and Brass Cap for Witness Corner to V.W. Corner Lot 2. True Corner Bears N 89° 59' 00"W, 40.00 feet.  
Buried Purple Magnetic Marker Under 36" Pipe. See filed survey for procedures.

New Accessories

- 7" Hemlock, S46W, 20.8' (Scribed/Painted Red)
- 11" Alder, N34W, 7.4' (Scribed/Painted Red)
- Set aluminum fence post, with land survey monument sign bolted to, beside iron pipe.

Location & Comments

Corner falls in wet swampy creek bottom. Creek runs N60E

Compass Declination 20 1/2

Firm/Agency Roberts Surveying Inc.

Address 29 West 29th St. Eugene, Oregon 97405

Party Chief Ted Baker

Notes

Witness Jim Metzler

Surveyor's Seal



M103-36

FILED

FEB 13 1987 TF

OREGON CORNER RESTORATION FORM

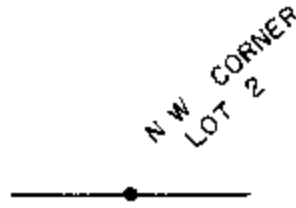
Section 18 Township 20S Range 8W

County Douglas Date 1-16-87

COUNTY SURVEYOR  
DOUGLAS COUNTY, ORE. TF

Corner Designation

(1/16 Corner)  
N.W. Corner Lot 2



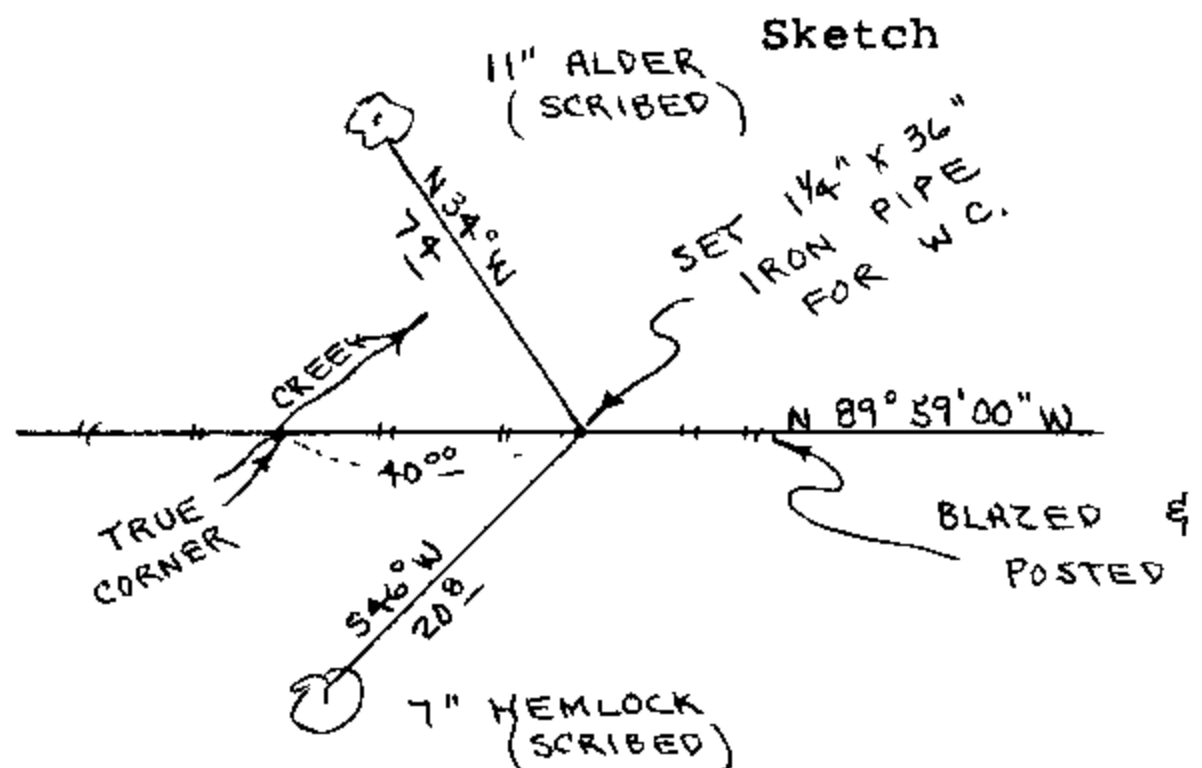
- Condition Report Only
- Not Found
- Renewed
- Unrecorded
- Surveyed In
- Referenced Out

Previous Renewals/Surveys, etc. G.L.O. Survey by W.P. Wright in 1883 and G.L.O. Survey by Thomas Tillman in 1954

Monument(s) & Accessories Found: (Condition and Source)

None

Monument Detail



Monument Set (Procedures and Description)

Set 1 1/4" x 36" Iron Pipe and Brass Cap for Witness Corner to N.W. Corner Lot 2. True Corner Bears N 89° 59' 00"W, 40.00 feet. Buried Purple Magnetic Marker Under 36" Pipe. See filed survey for procedures.

New Accessories

- 7" Hemlock, S46W, 20.8' (Scribed/Painted Red)
- 11" Alder, N34W, 7.4' (Scribed/Painted Red)
- Set aluminum fence post, with land survey monument sign bolted to, beside iron pipe.

Location & Comments

Corner falls in wet swampy creek bottom. Creek runs N60E

Compass Declination 20 1/2

Firm/Agency Roberts Surveying Inc.

Address 29 West 29th St. Eugene, Oregon 97405

Party Chief Ted Baker

Notes \_\_\_\_\_

Witness Jim Metzler

Surveyor's Seal



C.S. File No. 63/46-1c