

A SURVEY IN LOTS 1 & 2.
 JONES ADDITION TO ROSE-
 BURG SITUATED IN NW 1/4
 SEC. 18, T27S, R5W, W.M.
 DOUGLAS COUNTY OR.

FILED TF

APR 4 1988

COUNTY SURVEYOR
 DOUGLAS COUNTY, ORE.

SURVEY FOR S.R. HUNT -
 1387 NE STEPHENS
 ROSEBURG ORE. 97470

SURVEYOR: DONALD A. BENTZ
 P.O. BOX 901
 WINCHESTER ORE. 97495

REGISTERED
 PROFESSIONAL
 LAND SURVEYOR

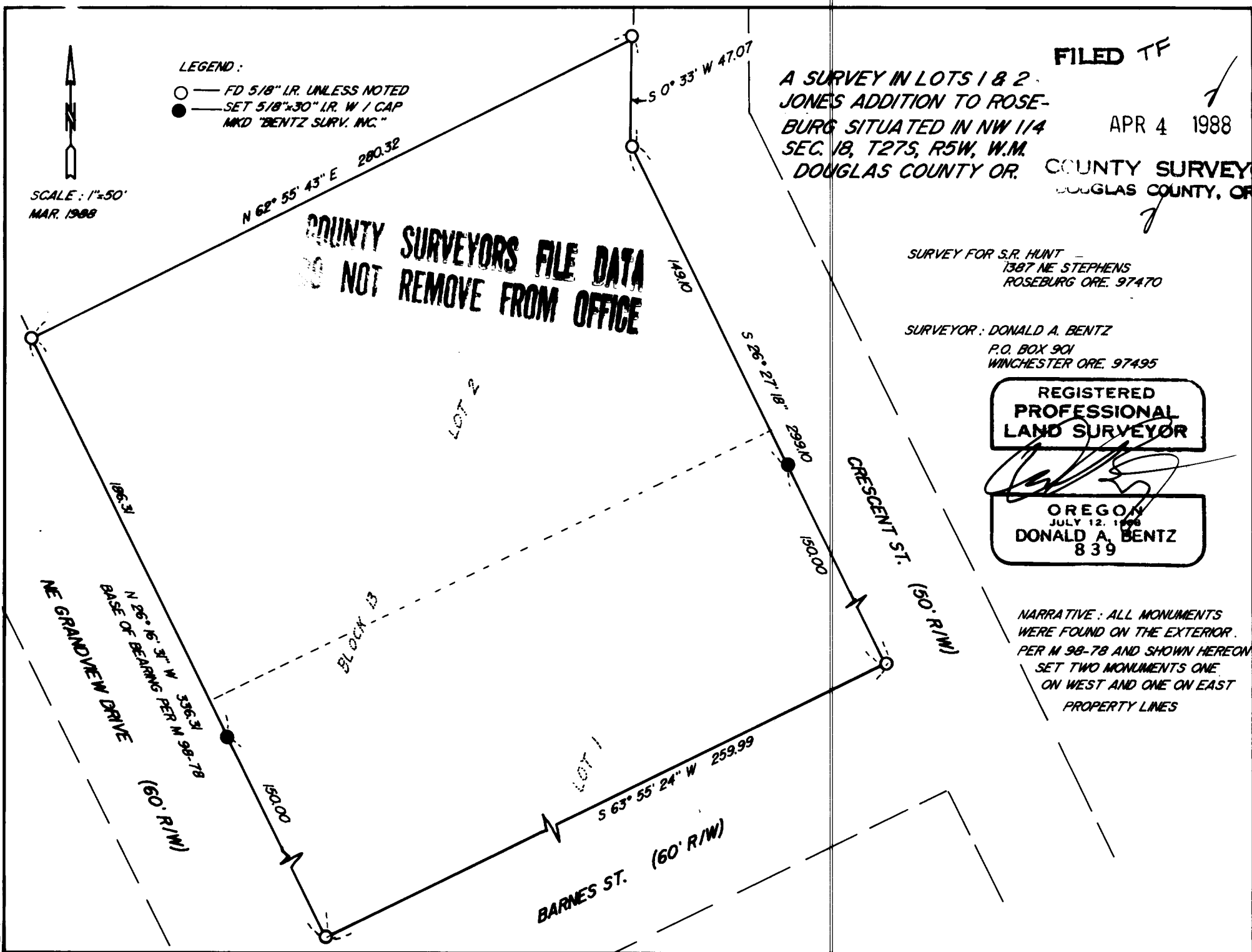
OREGON
 JULY 12, 1978
 DONALD A. BENTZ
 839

NARRATIVE: ALL MONUMENTS
 WERE FOUND ON THE EXTERIOR.
 PER M 98-78 AND SHOWN HEREON
 SET TWO MONUMENTS ONE
 ON WEST AND ONE ON EAST
 PROPERTY LINES

LEGEND:
 ○ — FD 5/8" I.R. UNLESS NOTED
 ● — SET 5/8"x30" I.R. W / CAP
 MKD "BENTZ SURV. INC."

SCALE: 1"=50'
 MAR. 1988

COUNTY SURVEYORS FILE DATA
 DO NOT REMOVE FROM OFFICE



63/42-6