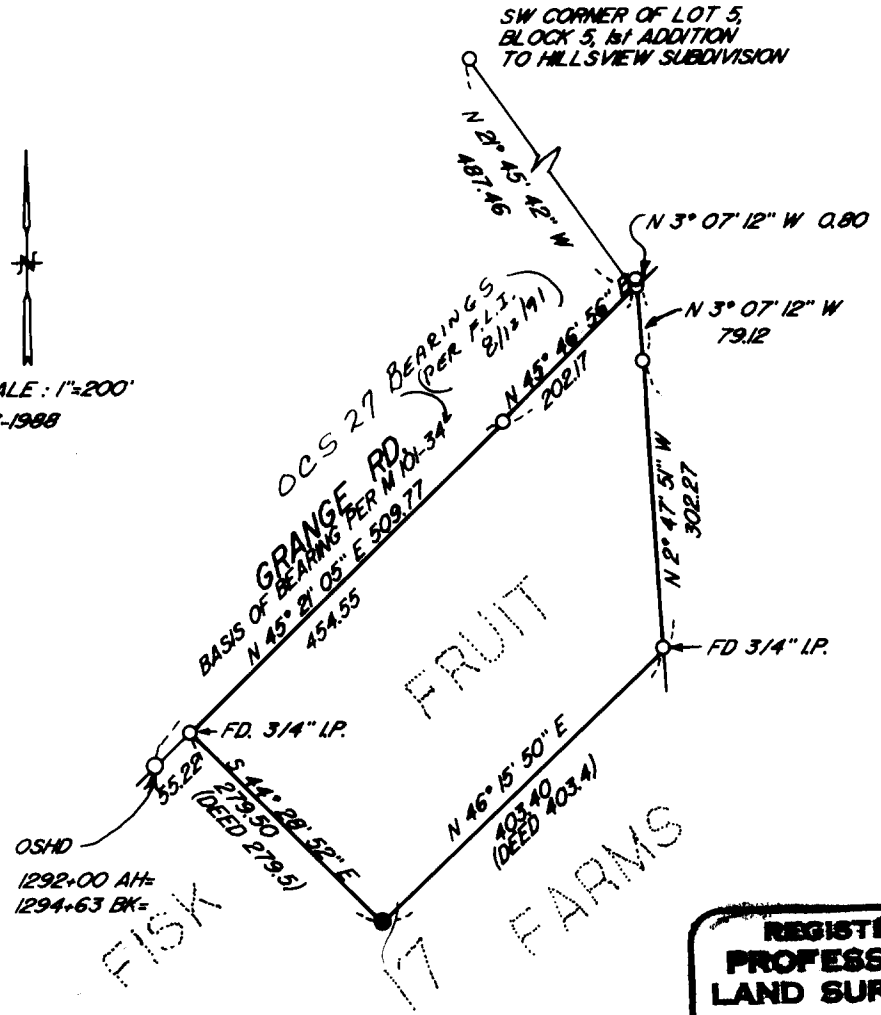


COUNTY SURVEYORS FILE DATA
DO NOT REMOVE FROM OFFICE

A SURVEY FOR CHARLES CUNNINGHAM
IN SW 1/4 OF SEC. 11, T 28 S, R 6 W, W.M., DOUGLAS COUNTY, OR.

FILED *DL*
MAR 17 1988 *J*
COUNTY SURVEYOR
DOUGLAS COUNTY, ORE. *J*

SCALE: 1"=200'
 3-1988



NARRATIVE:
 PURPOSE IS TO MONUMENT THE SOUTH WEST CORNER OF INST. NO. 77-8352. USED DIST.-DIST. INTERSECTION PER DEED, FROM FOUND MONUMENTS

LEGEND:
 ○ - FOUND 5/8" I.R. UNLESS NOTED
 ● - SET 5/8"x30" I.R. WITH CAP MKD "BENTZ SURV. INC"

SURVEYED BY:
 DONALD A. BENTZ
 P.O. BOX 901
 WINCHESTER OR. 97495

REGISTERED PROFESSIONAL LAND SURVEYOR
Donald A. Bentz
OREGON
 JULY 12, 1982
DONALD A. BENTZ
 839

C.S. File No. 63/42-5