

**A SURVEY FOR PETE LIEKEN IN
THE NW 1/4 SECTION 30, T26S, R5W
W.M., DOUGLAS COUNTY, OREGON**

FILED

ALSO IN SADDLE BUTTE ESTATES SUBDIVISION

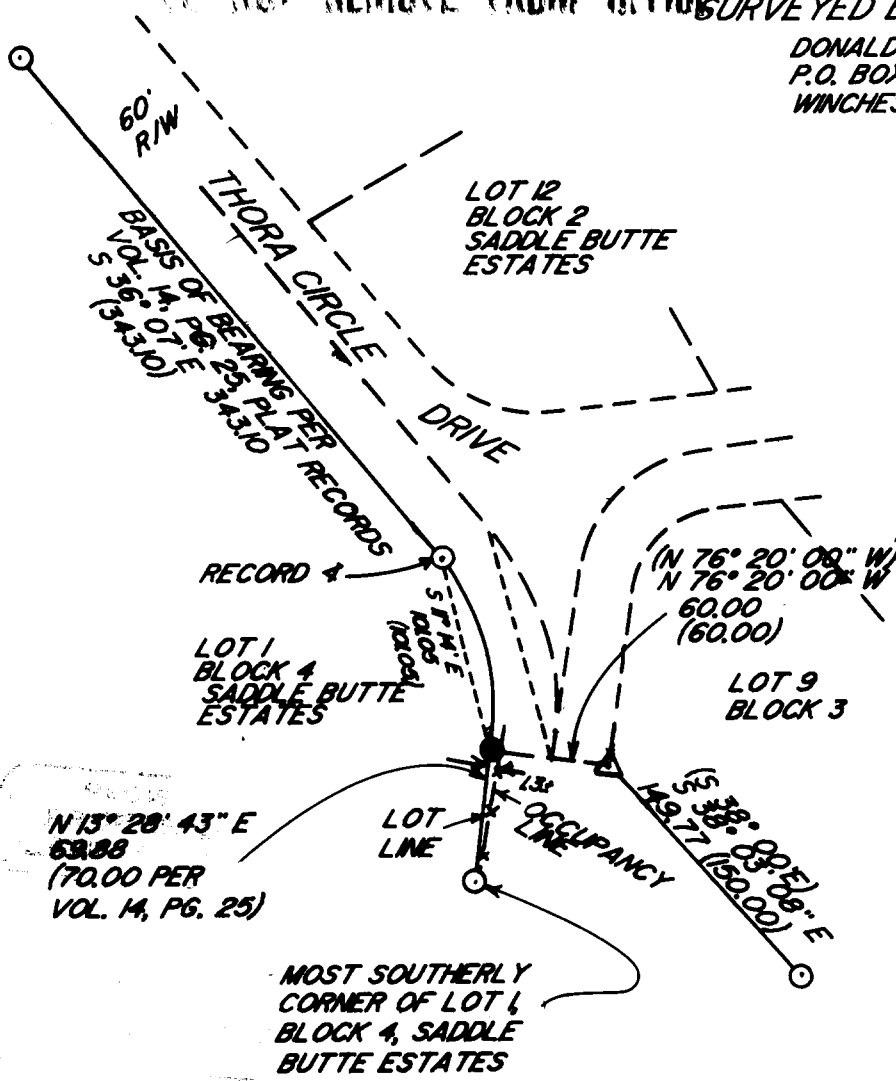
**COUNTY SURVEYORS FILE DATA
DO NOT REMOVE FROM OFFICE**

DL
OCT 20 1987

**COUNTY SURVEYOR
DOUGLAS COUNTY, ORE.**

SURVEYED BY:

DONALD A. BENTZ
P.O. BOX 301
WINCHESTER, OR 97495



SCALE: 1"=100'
OCT. 1987

**REGISTERED
PROFESSIONAL
LAND SURVEYOR**

OREGON
JULY 12, 1968
DONALD A. BENTZ
839

LEGEND:

- △ — COMPUTED POINT
- — SET 5/8"x30" LR. W/PLASTIC CAP MKD. "BENTZ SURV. INC."
- ⊙ — FOUND 5/8" LR.

NARRATIVE:

SET PIN @ RECORD 4
AND DISTANCE FROM BASE
OF BEARING LINE AS SHOWN.
ALL RECORD BRG. & DIST. SHOWN
ARE PER VOL. 14, PG. 25, PLAT RECORDS
FIELD CREW: JIM ARTMAN, D. DELATTE, G. LANG
COMPUTATIONS: GREG LANG
DRAFTING: MIKE JOHNSON
EQUIPMENT: WILD T1 & RED I EDM