

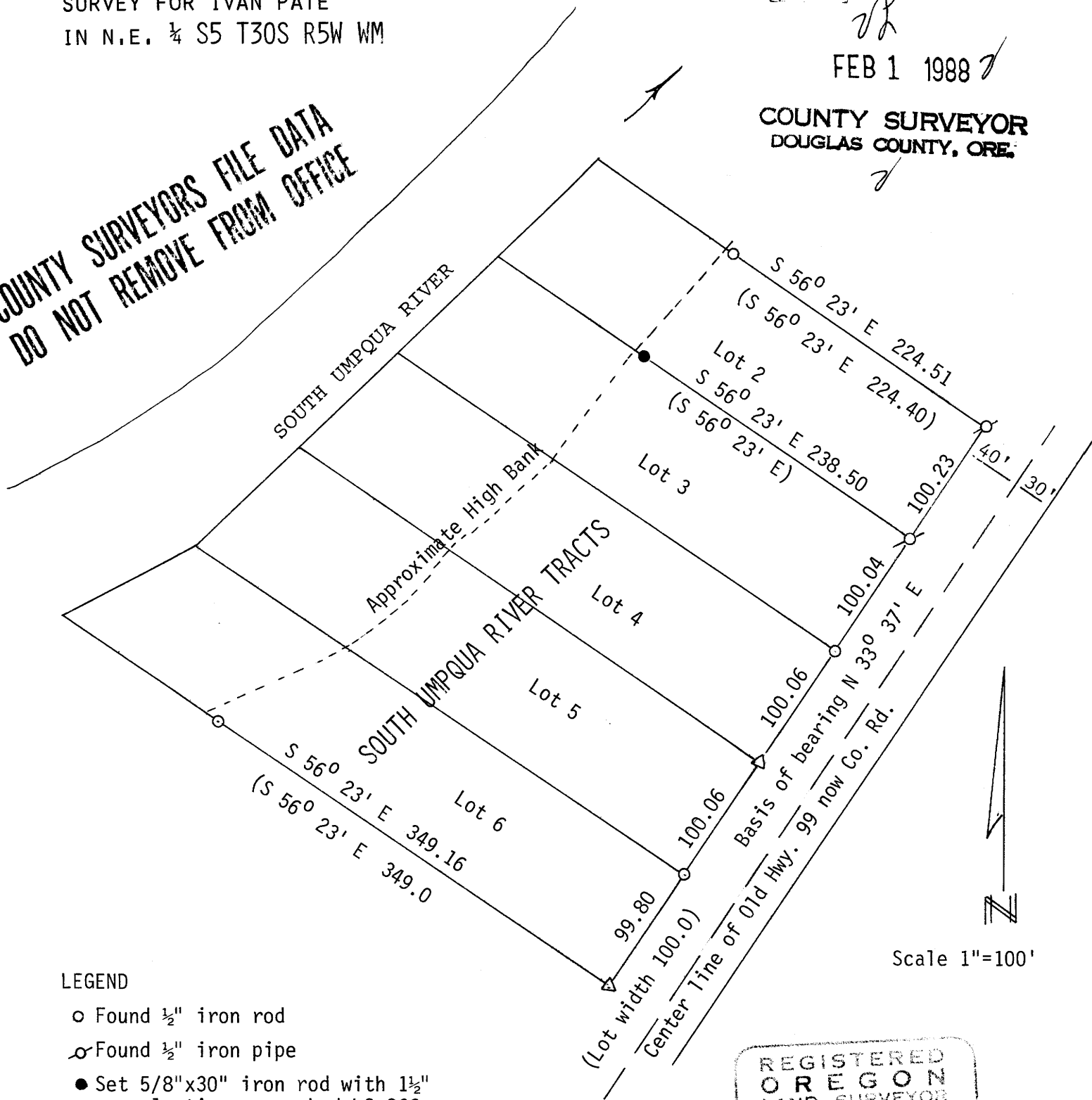
SURVEY FOR IVAN PATE
IN N.E. ¼ S5 T30S R5W WM

FILED

FEB 1 1988

COUNTY SURVEYOR
DOUGLAS COUNTY, ORE.

COUNTY SURVEYORS FILE DATA
DO NOT REMOVE FROM OFFICE



Scale 1"=100'

LEGEND

- Found ½" iron rod
- ⊙ Found ½" iron pipe
- Set 5/8"x30" iron rod with 1½" plastic cap marked LS 866
- ◁ Calculated point
- () Record

REGISTERED
OREGON
LAND SURVEYOR

JULY 12, 1968
WILLIAM J. RUPPERT
866

COUNTY SURVEYORS FILE DATA
DO NOT REMOVE FROM OFFICE

C.S. File No. 63/36-6
4

COUNTY SURVEYORS FILE DATA

FILED

JR
FEB 1 1988 *J*

Survey for Ivan Pate in NE $\frac{1}{4}$ S5, T30S, R5W, WM

COUNTY SURVEYOR
DOUGLAS COUNTY, ORE.

SURVEY NARRATIVE

Purpose: The survey was made to establish the line between lots 2 and 3 for constructing a fence. Pate owns lots 3 and 4.

Method: Found monuments show good agreement with original distances and bearings. Monuments on the river bank between lots 2 and 6 have been lost due to erosion. I held lot widths as found along the fronts and set the line between lots 2 and 3 at record bearing

Basis of bearing: Bearings are based on monuments fronting the highway.

Equipment: Lietz T60D Theodolite, Mac II EDM, and 100' steel tape.

Surveyed by: William J. Ruppert
P.O. Box 1564
Myrtle Creek, OR 97457

January 1988

COUNTY SURVEYORS FILE DATA
DO NOT REMOVE FROM OFFICE

REGISTERED
OREGON
LAND SURVEYOR

William J. Ruppert
JULY 12, 1968
WILLIAM J. RUPPERT
866