

FILED

OREGON CORNER RESTORATION FORM

JUL 24 1986

Section 6 Township 30 S Range 9 W

COUNTY SURVEYOR  
DOUGLAS COUNTY, ORE.

County Douglas Date 7-18-86

Corner Designation

N 1/16

- Condition Report Only
- Not Found
- Renewed
- Unrecorded
- Surveyed In
- Referenced Out

Previous Renewals/Surveys, etc. \_\_\_\_\_

Monument(s) & Accessories Found: (Condition and Source)

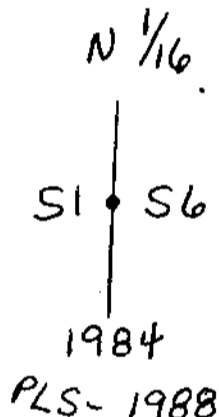
39" D. FIR (STUMP) Bear's N77°E - 8 1/2 FT (Rec. 7° FT)  
Healed FACE (1963)

16" D. FIR (BROKEN TOP) Bear's S77°W - 7 1/2 FT  
Healed FACE (1963)

Monument Detail

2 1/2" Alum CAP ON a 1"  
I.P. extends 4" above grd.  
ALSO 5/8" I.R. Alongside  
A.C. ..

Sketch



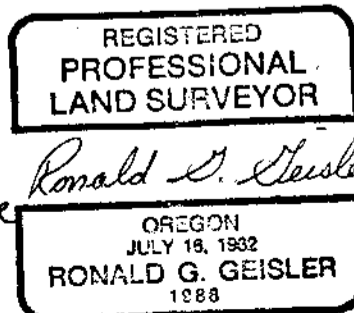
Monument Set (Procedures and Description)

New Accessories

Location & Comments

Compass Declination 19°E  
 Firm/Agency CHAMPION  
International  
 Address P.O. Box 1328  
Roseburg OR  
 Party Chief Dean Turner  
 Notes Lynn Sibley  
 Witness \_\_\_\_\_

Surveyor's Seal



C.S. File No. 63374