

OREGON CORNER RESTORATION FORM

FILED

Section 36 Township 29S Range 10W

JUL 24 1986

County Douglas Date July, 1986

COUNTY SURVEYOR
DOUGLAS COUNTY, ORE.

Corner Designation

South East Section Corner

- Condition Report Only
- Not Found
- Renewed
- Unrecorded
- Surveyed In
- Referenced Out

Previous Renewals/Surveys, etc. # 729-9
730-9

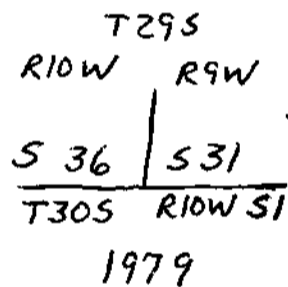
Monument(s) & Accessories Found: (Condition and Source)

- 48" Fir snag (rotten) bears N55°W; 92⁴ ft. (original)
- 16" D. Fir now stump bears N73°E; 9² ft. Healed face. (Date unknown)
- 16" D. Fir bears N24°W; 19⁵ ft Healed face (1963)
- 12" D. Fir now stump bears N29°E; 8⁶ ft. Healed face (1963)

Monument Detail

BLM 3¹/₂" B.C. on a 2¹/₂" I.P.
extends 2" above ground.
Did not find corner stone.

Sketch



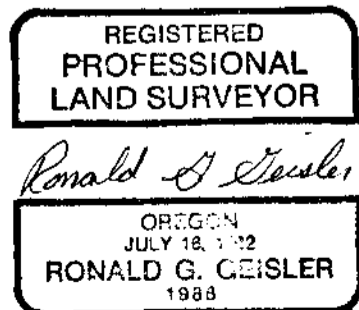
Monument Set (Procedures and Description)

New Accessories

Location & Comments

Compass Declination 19°E
 Firm/Agency Champion International
 Address P.O. Box 1328
Roseburg, ORE.
 Party Chief Lynn Sibley
 Notes Lynn Sibley
 Witness Dean Turner

Surveyor's Seal



#138 T. 30-9 X
#94 T. 29-9 X

C.S. File No. 63/39-35