



FILED

SL

SEP 22 1986 TF

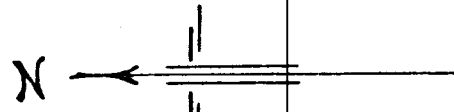
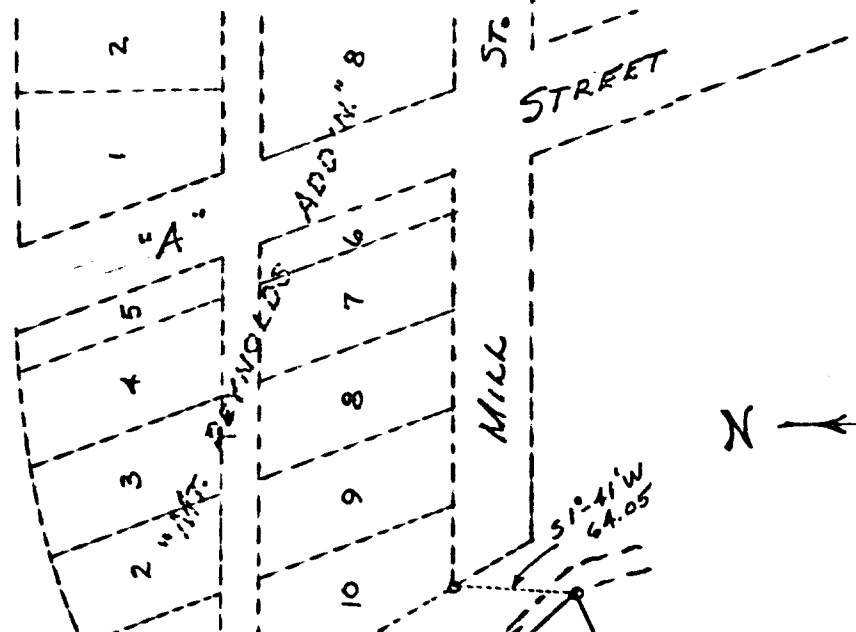
COUNTY SURVEYOR
DOUGLAS COUNTY, ORE.

TF

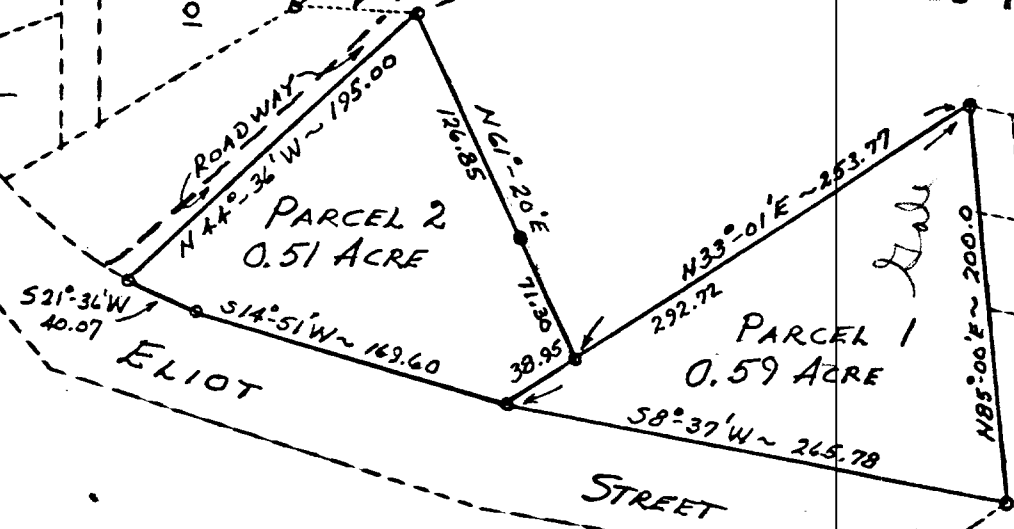
COUNTY SURVEYORS FILE DATA
DO NOT REMOVE FROM OFFICE

TILLER →

TILLER-TRAIL HWY.



COUNTY SURVEYORS FILE DATA
DO NOT REMOVE FROM OFFICE



FIELD SURVEY & PLAT FOR
REED J. GROSS, SR.
CANYONVILLE, OREGON

PARCELS IN NE 1/4 SEC. 34 T30S R5W W.M.
(CITY OF CANYONVILLE) DOUGLAS COUNTY, OREGON

SCALE: 1" = 100'

MARTIN ENGINEERING SERVICE ~ MYRTLE CREEK, ORE.

SE COR. BLOCK 1
TOWNSHIP OF CANYONVILLE

(OLD PACIFIC HWY.)

C.S. File No. 63/28-2

DECEMBER 1972