

SURVEY FOR LASKEY-CLIFTON CORPORATION NE<sup>4</sup>SE<sup>4</sup> Section 7 T22S R12W  
 SURVEY FOR MARTIN ANDRUSS NW<sup>4</sup>SW<sup>4</sup> Section 8 T22S R12W  
 DOUGLAS COUNTY, OREGON

FILED

*TF*

JUN 23 1986

**COUNTY SURVEYORS FILE DATA  
 DO NOT REMOVE FROM OFFICE**

REGISTERED  
 PROFESSIONAL  
 LAND SURVEYOR

COUNTY SURVEYOR  
 DOUGLAS COUNTY, ORE.

*Ronald L. Durham*  
 OREGON  
 JULY 12, 1983  
 RONALD L. DURHAM  
 600

1" = 200'

OCT. 4, 1972

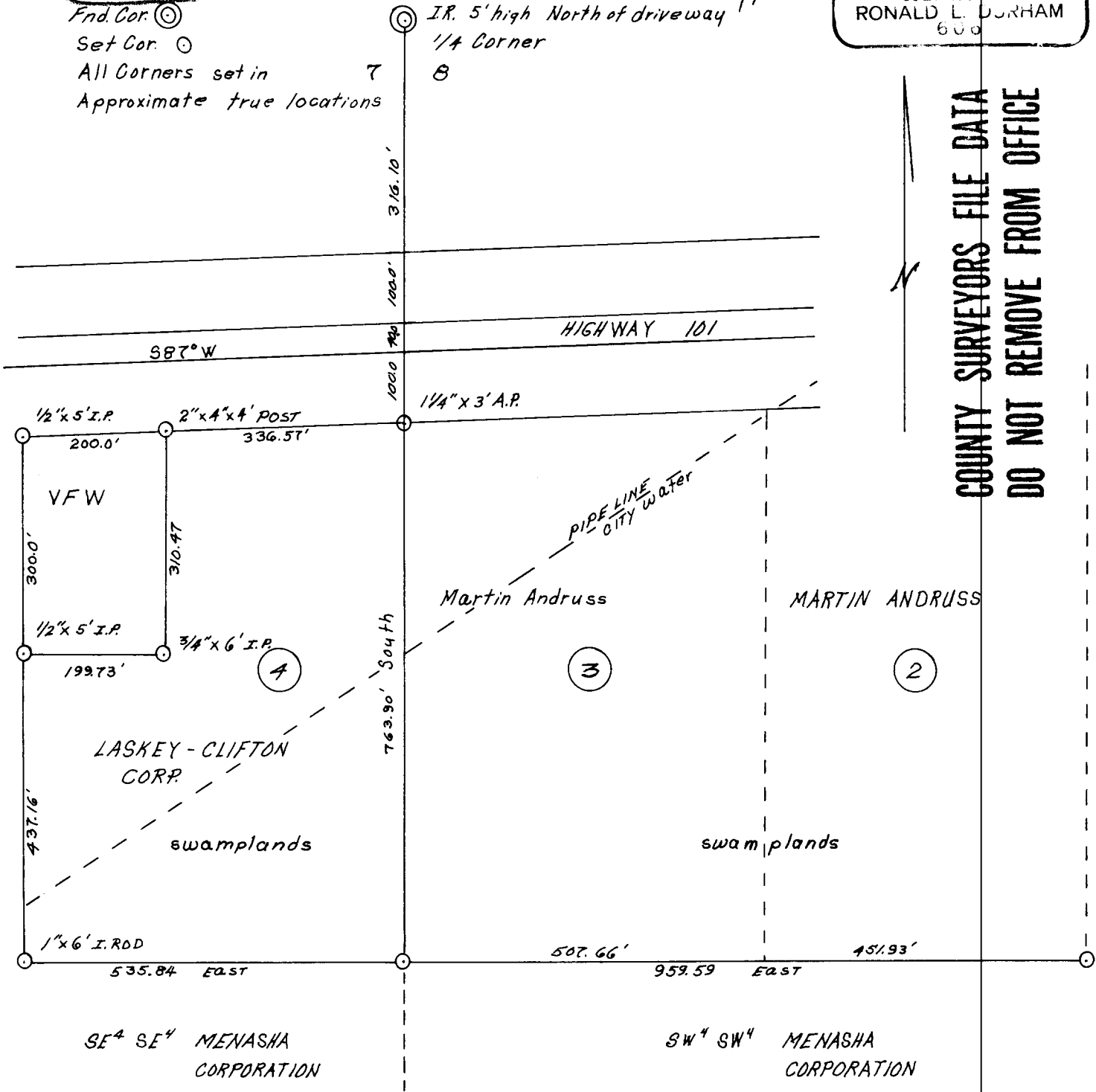
Fnd. Cor. ⊙

Set Cor. ○

All Corners set in T

Approximate true locations

⊙ I.R. 5' high North of driveway TF  
 ○ 1/4 Corner  
 ⊙



**COUNTY SURVEYORS FILE DATA  
 DO NOT REMOVE FROM OFFICE**