

M 99-71

FILED  
RECEIVED *rk*

OREGON CORNER RESTORATION FORM

NOV 5 1985

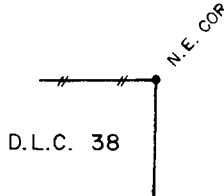
Section 13 Township 22S Range 8W

COUNTY SURVEYOR  
DOUGLAS COUNTY, ORE.

County Douglas Date 7-01-85

Corner Designation

N.E. Corner  
D.L.C. #38



- Condition Report Only
- Not Found
- Renewed
- Unrecorded
- Surveyed In
- Referenced Out

Previous Renewals/Surveys, etc. D.L.C. Survey by Dennis Hathorn in 1856 and Survey by Floyd J. Cole for Binder Brothers in 1913. Also Survey M84-39 by Triangle Engineering in June 1980.

Monument(s) & Accessories Found: (Condition and Source)

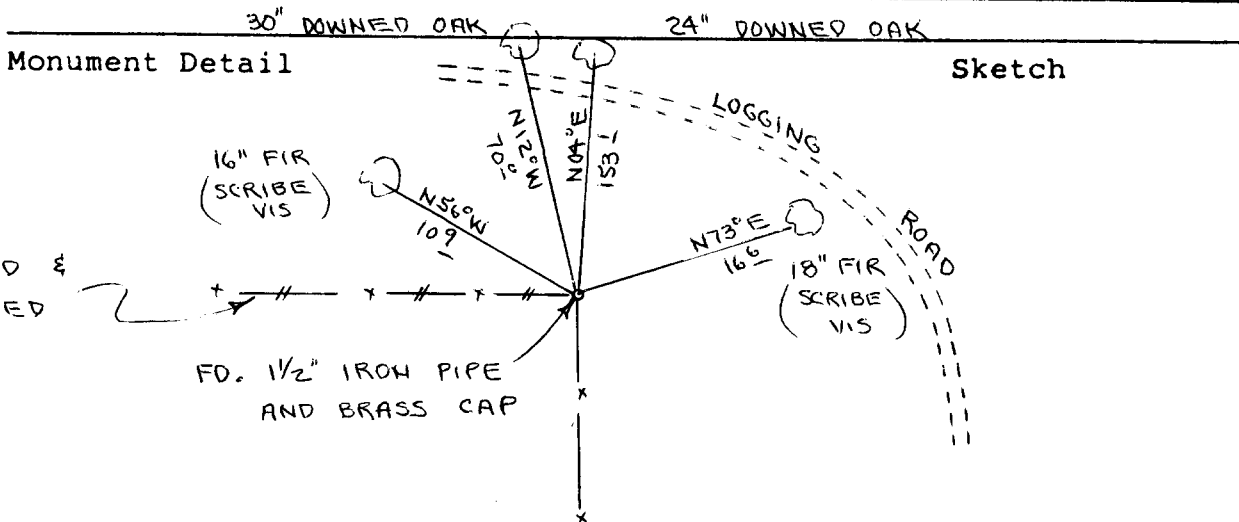
Found 1 1/2" Iron Pipe and Brass Cap set in Survey M84-39.

24" Downed Oak, N04E, 153.1' (Badly Burned), 1856 BT. Rec. N02E, 153.1'

30" Downed Oak, N12W, 70.0' (Face Vis.) , 1856 BT. Rec. N10W, 70.0'

16" Fir, N56W, 10.9' (Scribe Vis.), 1980 BT. Rec. N56W, 10.9'

18" Fir, N73E, 16.6' (Scribe Vis.), 1980 BT. Rec. N73E, 16.6'



Monument Set (Procedures and Description)

\_\_\_\_\_  
\_\_\_\_\_  
\_\_\_\_\_  
\_\_\_\_\_

New Accessories

\_\_\_\_\_  
\_\_\_\_\_  
\_\_\_\_\_  
\_\_\_\_\_

Location & Comments

Corner is in old W-S Compass Declination 20 1/2

fence corner and lies Firm/Agency Roberts

25' West of gravel Surveying Inc.

logging road. Address 29 West 29th St.

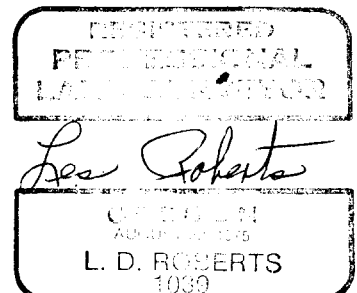
Eugene, Oregon 97405

Party Chief Ted Baker

Notes

Witness Stu Duce

Surveyor's Seal



M 99-71

FILED  
RECEIVED *JK*

OREGON CORNER RESTORATION FORM

NOV 5 1985

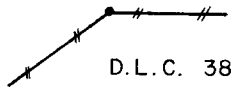
Section 13 Township 22S Range 8W

County Douglas Date 7-19-85

COUNTY SURVEYOR  
DOUGLAS COUNTY, ORE.

Corner Designation

N.W. Corner  
D.L.C. #38



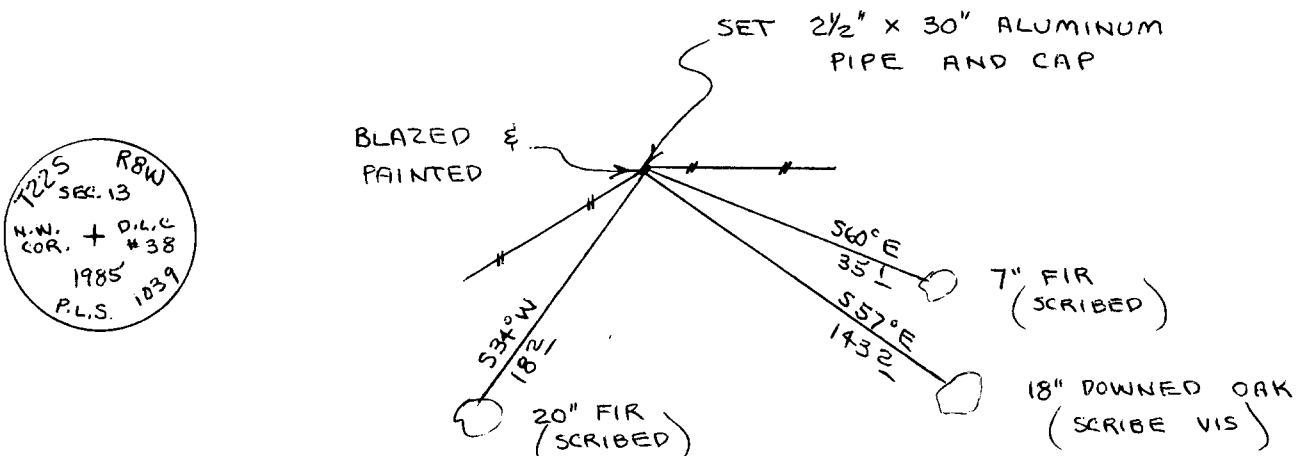
- Condition Report Only
- Not Found
- Renewed
- Unrecorded
- Surveyed In
- Referenced Out

Previous Renewals/Surveys, etc. D.L.C. Survey by Dennis Hathorn in 1856 and Survey by Floyd J. Cole for Binder Brothers in 1913.

Monument(s) & Accessories Found: (Condition and Source)  
Found 18" Downed Oak, S57E, 143.2' (Negative Scribe Vis.), 1856 BT.  
Rec. S57E, 143.2'  
No evidence of 40" Fir, S35W.

Monument Detail

Sketch



Monument Set (Procedures and Description)

Set 2 1/2" x 30" Aluminum Pipe and Cap. Purple Magnetic Marker Buried Under Aluminum Pipe. Set metal fence post, with land survey monument sign wired to, beside aluminum pipe.

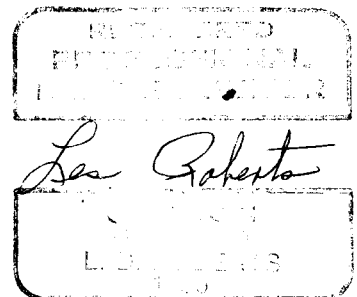
New Accessories

7" Fir, S60E, 35.1' (Scribed/Painted Red)  
20" Fir, S34W, 18.2' (Scribed/Painted Red)

Location & Comments

Surveyor's Seal

Compass Declination 20 1/2  
 Firm/Agency Roberts  
Surveying Inc.  
 Address 29 West 29th St.  
Eugene, Oregon 97405  
 Party Chief Les Roberts  
 Notes \_\_\_\_\_  
 Witness Marion Hunter



#155 ✓

10799-71

FILED  
RECEIVED *rl*

NOV 5 1985

OREGON CORNER RESTORATION FORM

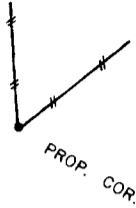
Section 13 Township 22S Range 8W

County Douglas Date 8-26-85

COUNTY SURVEYOR  
DOUGLAS COUNTY, ORE.

Corner Designation

Property Corner

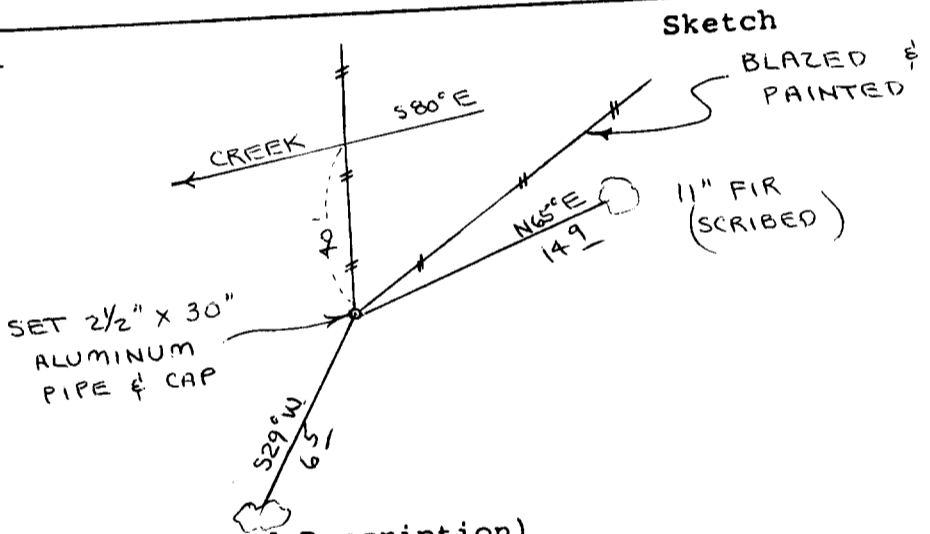


- Condition Report Only
- Not Found
- Renewed
- Unrecorded
- Surveyed In
- Referenced Out

Previous Renewals/Surveys, etc. Survey by Floyd J. Cole for Binder Brothers in 1913.

Monument(s) & Accessories Found: (Condition and Source)  
None

Monument Detail



Monument Set (Procedures and Description)

Set 2 1/2" x 30" Aluminum Pipe and Cap. Purple Magnetic Marker Buried Under Aluminum Pipe. Set metal fence post, with land survey monument sign wired to, beside aluminum pipe. See filed survey for procedures.

New Accessories

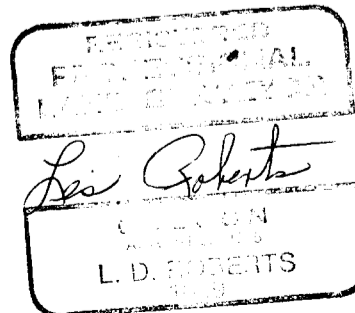
- 11" Fir, N65E, 14.9' (Scribed/Painted Red)
- 12" Fir, S29W, 6.5' (Scribed/Painted Red)

Location & Comments

Corner lies on flat ground about 40' South of small creek.

Compass Declination 20 1/2  
 Firm/Agency Roberts Surveying Inc.  
 Address 29 West 29th St. Eugene, Oregon 97405  
 Party Chief Ted Baker  
 Notes \_\_\_\_\_  
 Witness Stu Duce

Surveyor's Seal



C.S. File No. 63/10