

M 99-7

FILED
RECEIVED *RS*

JUL 9 1985

OREGON CORNER RESTORATION FORM

Section 20 Township 20S Range 7W

County Douglas Date 3-29-85

COUNTY SURVEYOR
DOUGLAS COUNTY, ORE.

Corner Designation

West $\frac{1}{4}$ Corner
Section 20 19 | 20

- Condition Report Only
- Not Found
- Renewed
- Unrecorded
- Surveyed In
- Referenced Out

Previous Renewals/Surveys, etc. Thomas E. Todd 1891 G.L.O. Survey
G.L.O. Remonumentation in 1960, see page 12,885. See County
renewal #62

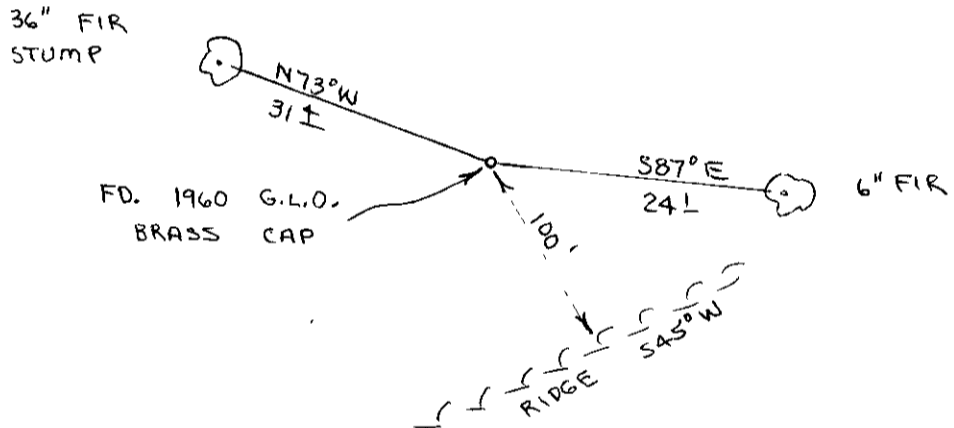
Monument(s) & Accessories Found: (Condition and Source)

Found 1960 G.L.O. Brass Cap set firmly in ground. Found metal
fence post beside brass cap.

36" Fir Stump, N73W, 31.4' (Scribe Vis.), 1966 C.S.B.T.
Record N75W, 28.2'

Monument Detail

Sketch



Monument Set (Procedures and Description)

New Accessories

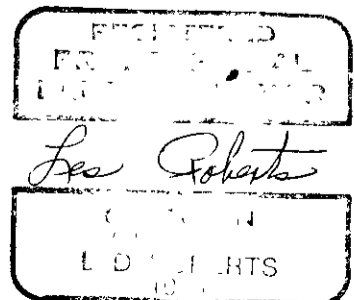
6" Fir, S87E, 24.1' (Scribed/Aluminum Washer/Painted Red)
Wired survey monument sign to metal fence post.

Location & Comments

Corner lies on North-
west slope about 100'
from top of ridge.
Ridge runs NE-SW.

Compass Declination 20 $\frac{1}{2}$
Firm/Agency Roberts
Surveying Inc.
Address 29 West 29th St.
Eugene, Oregon 97405
Party Chief Les Roberts
Notes Ted Baker
Witness Stu Duce

Surveyor's Seal



C.S. File No. 63/8-1Ac

M99-7

FILED
RECEIVED *RF*

OREGON CORNER RESTORATION FORM

JUL 9 1985

Section 20 Township 20S Range 7W

COUNTY SURVEYOR
DOUGLAS COUNTY, ORE.

County Douglas Date 4-23-85

Corner Designation

Center $\frac{1}{4}$ Corner
Section 20

- Condition Report Only
- Not Found
- Renewed
- Unrecorded
- Surveyed In
- Referenced Out

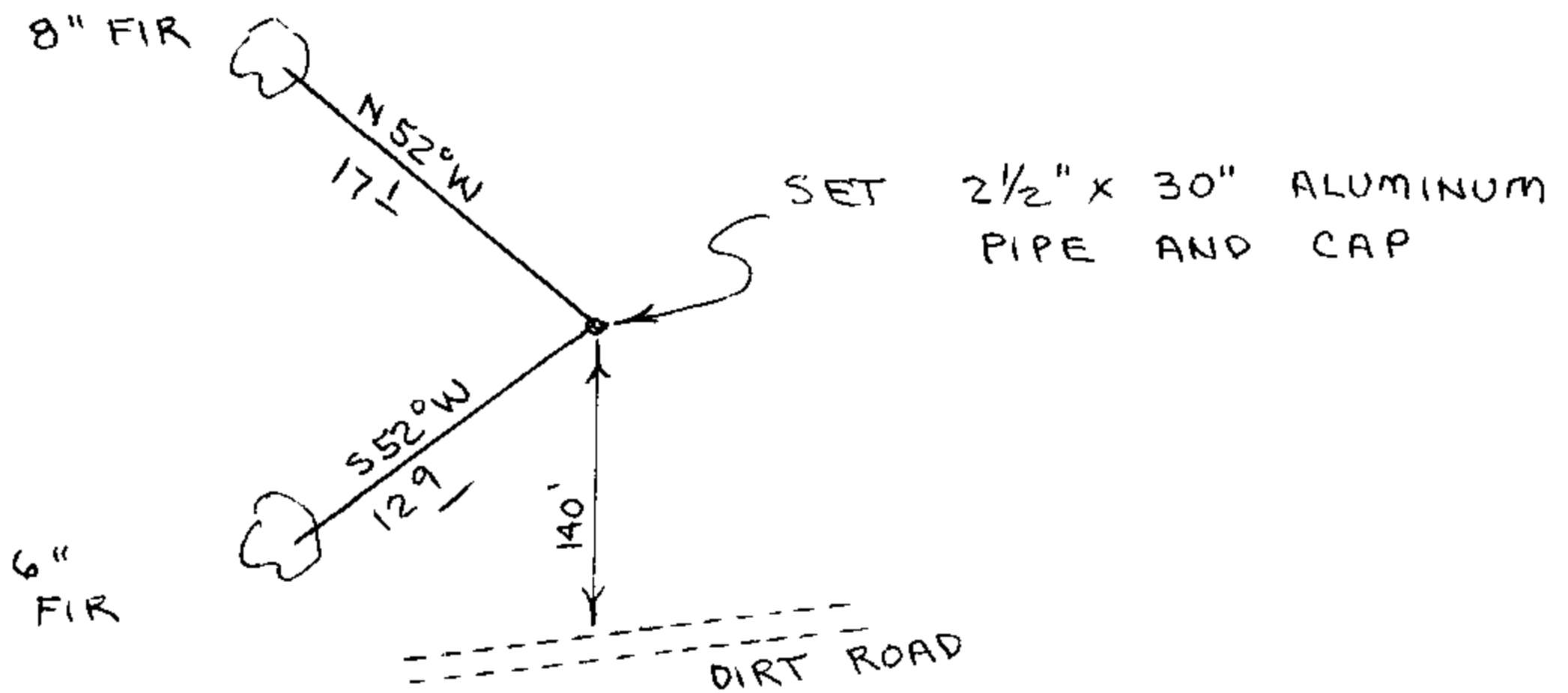
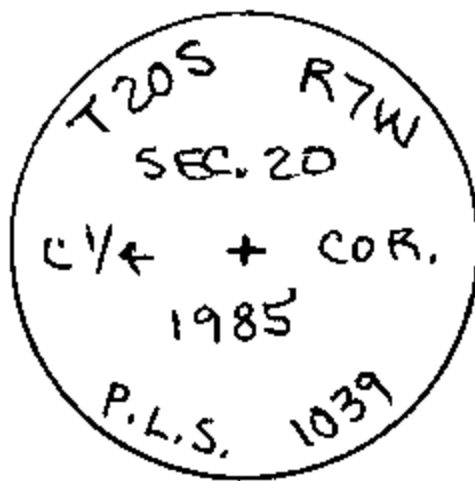
Previous Renewals/Surveys, etc. Leon Olson's Survey dated 12-05-66
C.S. File No. 54/37

Monument(s) & Accessories Found: (Condition and Source)

Not set by Leon Olson

Monument Detail

Sketch



Monument Set (Procedures and Description)

Set 2 1/2" x 30" Aluminum Pipe and Cap. Buried Purple Magnetic Marker Under Pipe. See Filed Survey for Procedures.

New Accessories

- 6" Fir, S52W, 12.9' to Spike (Scribed/Aluminum Washer/Painted)
- 8" Fir, N52W, 17.1' to Spike (Scribed/Aluminum Washer/Painted)
- Set metal fence post, with survey monument sign wired to, beside aluminum pipe.

Location & Comments

Corner lies on steep North slope about 140' North of Dirt Road.

Compass Declination 20 1/2
Firm/Agency Roberts Surveying Inc.
Address 29 West 29th St. Eugene, Oregon 97405
Party Chief Les Roberts
Notes Ted Baker
Witness Stu Duce

Surveyor's Seal



C.S. File No. 63/181

M99-7

FILED
RECEIVED *JS*

JUL 9 1985

OREGON CORNER RESTORATION FORM

Section 20 Township 20S Range 7W

County Douglas Date 4-25-85

COUNTY SURVEYOR
DOUGLAS COUNTY, ORE.

Corner Designation

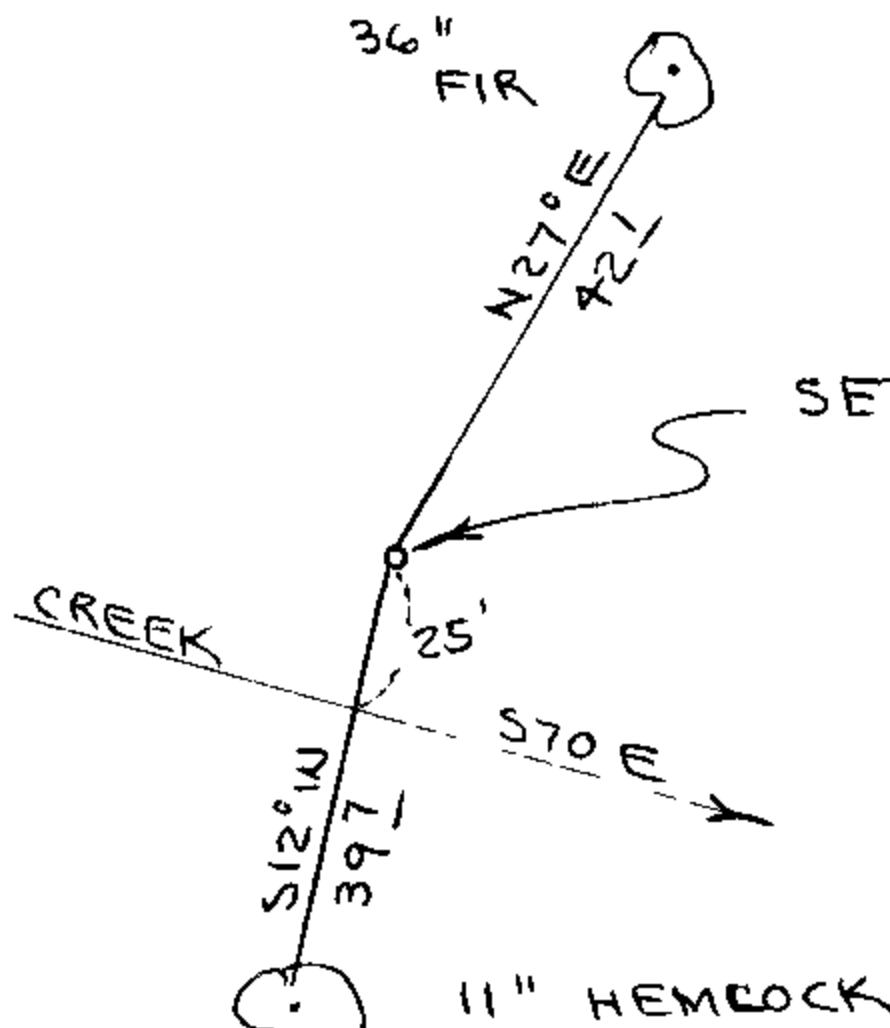
East 1/16 Corner
South Line Section 20

- Condition Report Only
- Not Found
- Renewed
- Unrecorded
- Surveyed In
- Referenced Out

Previous Renewals/Surveys, etc. Leon Olson's Survey dated 12-05-66
See C.S. File No. 54/37

Monument(s) & Accessories Found: (Condition and Source)
1" Iron Pipe not found.

Monument Detail



Sketch

SET 2 1/2" x 30" ALUMINUM
PIPE & CAP

Monument Set (Procedures and Description)

Set 2 1/2" x 30" Aluminum Pipe and Cap. Buried Purple Magnetic
Marker Under Pipe. See filed survey for procedures.

New Accessories

- 11" Hemlock, S12W, 39.7' to Spike (Scribed/Alum. Washer/Painted Red)
- 36" Fir, N27E, 42.1' to Spike (Scribed/Alum. Washer/Painted Red)
- Set metal fence post, with survey monument sign wired to,
beside aluminum cap.

Location & Comments

Corner lies on North side of small creek. Creek runs S70E

Compass Declination 20 1/2

Firm/Agency Roberts Surveying Inc.

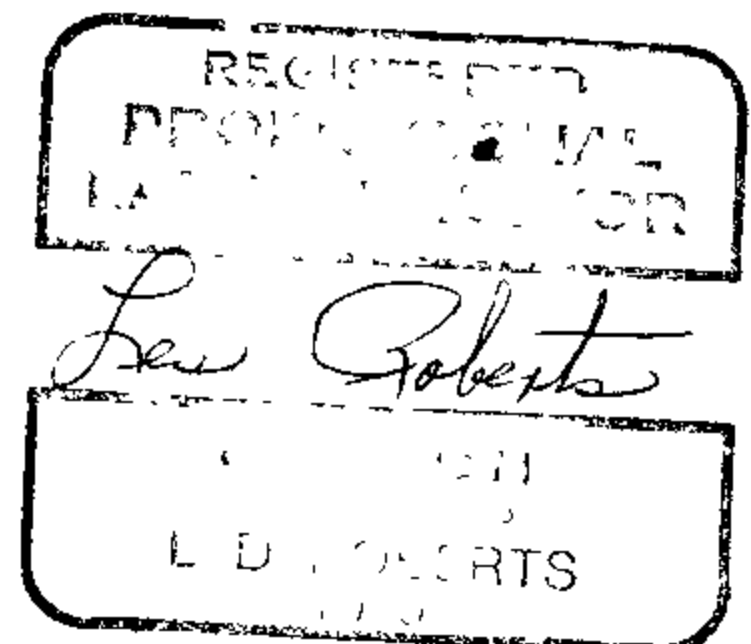
Address 29 West 29th St. Eugene, Oregon 97405

Party Chief Les Roberts

Notes Ted Baker

Witness Stu Duce

Surveyor's Seal



C.S. File No. 63/18-1A

M 99-7

FILED
RECEIVED *JS*

JUL 9 1985

OREGON CORNER RESTORATION FORM

Section 20 Township 20S Range 7W

County Douglas Date 4-25-85

COUNTY SURVEYOR
DOUGLAS COUNTY, ORE.

Corner Designation

South 1/16 Corner
East Line Section 20

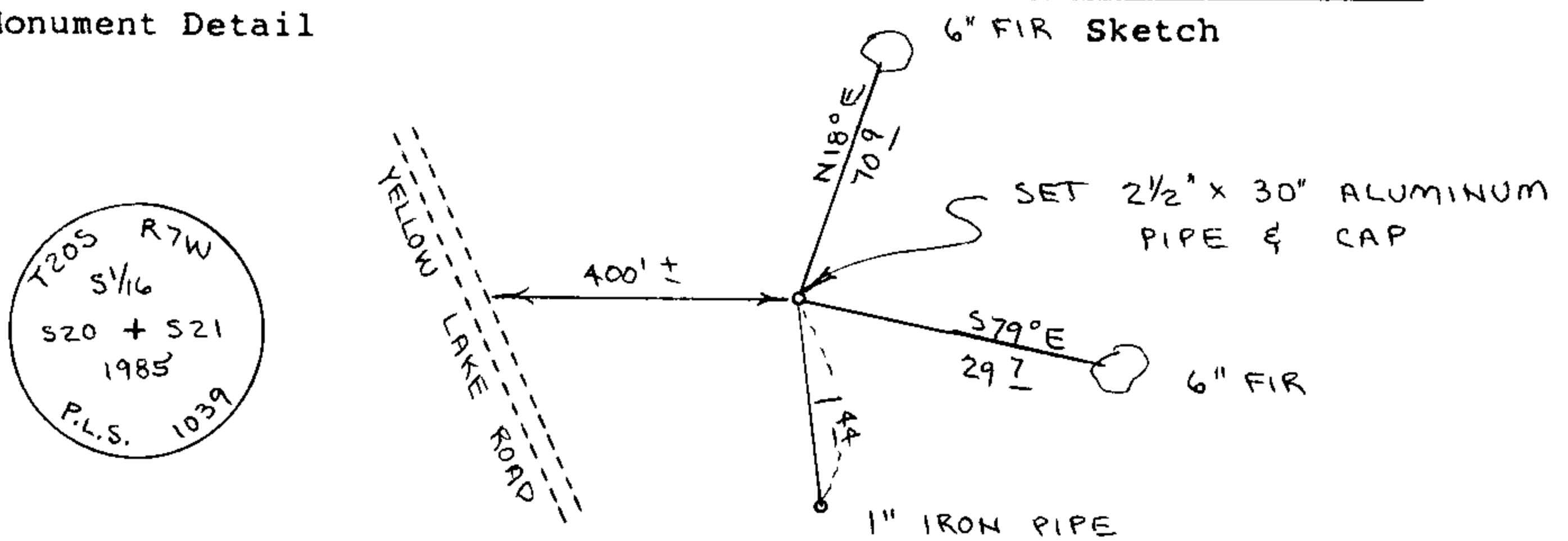
- Condition Report Only
- Not Found
- Renewed
- Unrecorded
- Surveyed In
- Referenced Out

Previous Renewals/Surveys, etc. Leon Olson's Survey dated 12-05-66
See C.S. File No. 54/37

Monument(s) & Accessories Found: (Condition and Source)

1" Iron Pipe

Monument Detail



Monument Set (Procedures and Description)

Set 2 1/2" x 30" Aluminum Pipe and Cap. Buried Purple Magnetic Marker Under Pipe. Olson's 1" Iron Pipe Bears S 0° 57' 15" E, 1.44'. See filed survey for procedures.

New Accessories

6" Fir, S79E, 29.7' to Spike (Scribed/Alum. Washer/Painted Red)
6" Fir, N18E, 70.9' to Spike (Scribed/Alum. Washer/Painted Red)
Set metal fence post, with survey monument sign wired to, beside ~~base~~ cap.
ALUM.

Location & Comments

Corner lies on steep West slope about 400' East of Yellow Lake Road

Compass Declination 20 1/2

Firm/Agency Roberts Surveying Inc.

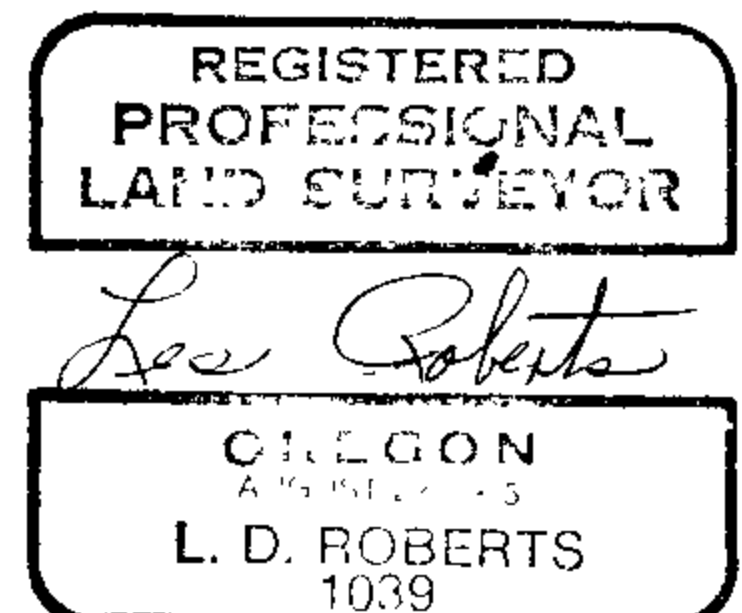
Address 29 West 29th St. Eugene, Oregon 97405

Party Chief Les Roberts

Notes Ted Baker

Witness Stu Duce

Surveyor's Seal



C.S. File No. 63/18-1ec

M 99-7

FILED
RECEIVED *JS*

OREGON CORNER RESTORATION FORM

Section 20 Township 20S Range 7W

JUL 9 1985

County Douglas Date 4-24-85

COUNTY SURVEYOR
DOUGLAS COUNTY, ORE.

Corner Designation

S.E. 1/16 Corner
Section 20

- Condition Report Only
- Not Found
- Renewed
- Unrecorded
- Surveyed In
- Referenced Out

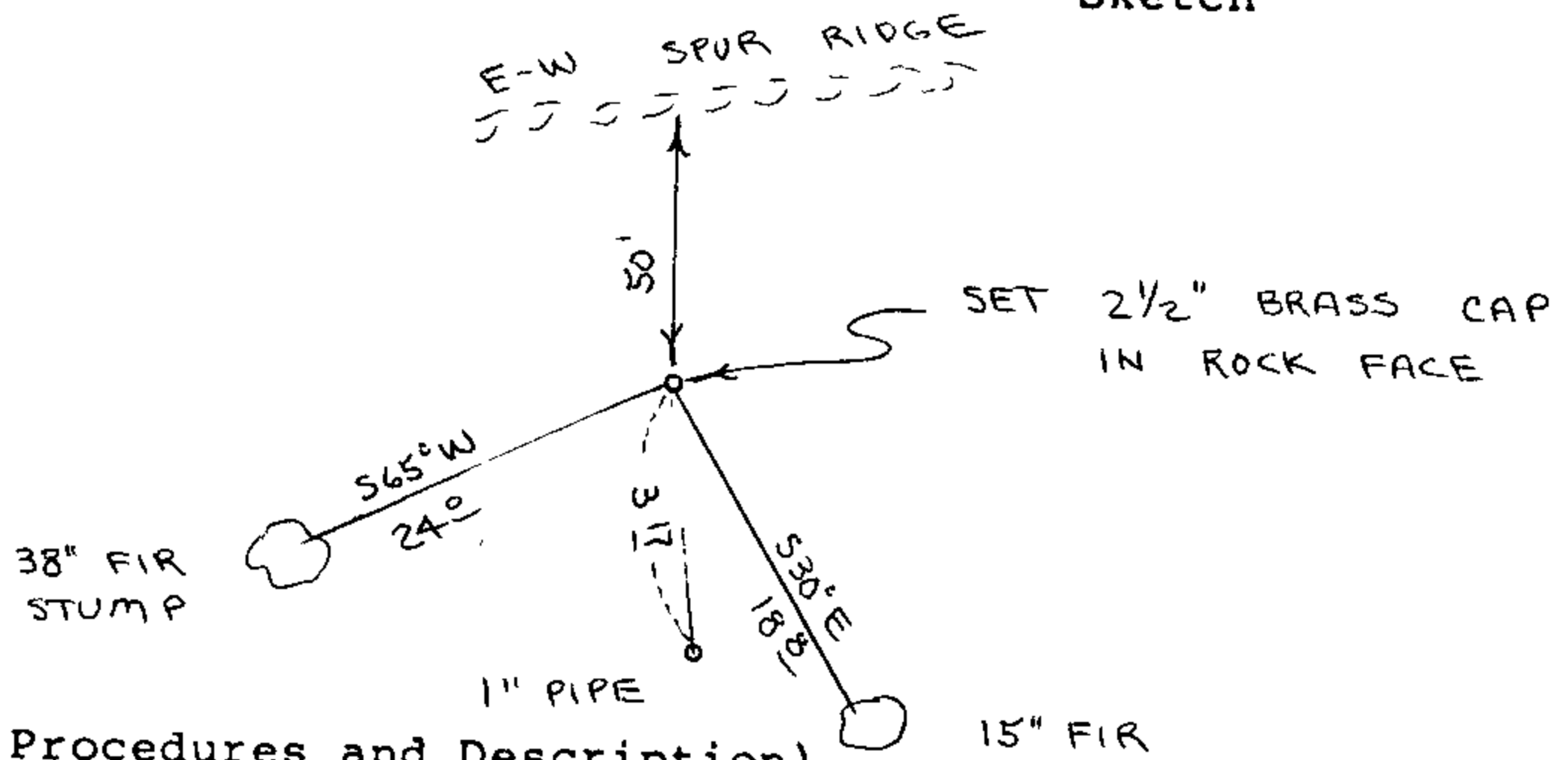
Previous Renewals/Surveys, etc. Leon Olson's Survey dated 12-05-66
See C.S. File No. 54/37

Monument(s) & Accessories Found: (Condition and Source)

1" Iron Pipe.
Maple Clump, N45E, 40.8'

Monument Detail

Sketch



Monument Set (Procedures and Description)

Set 2 1/2" dia. Brass Cap in Rock Face, Olson's 1" Iron Pipe Bears
S 7° 13' 30" E, 3.17'. See filed survey for procedures.

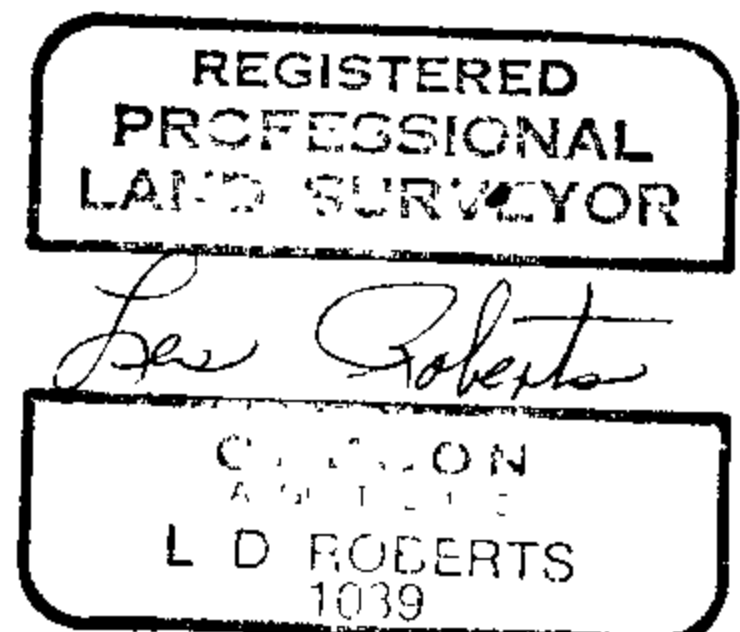
New Accessories

15" Fir, S30E, 18.8' to Spike (Scribed/Alum. Washer/Painted Red)
38" Fir Stump, S65W, 24.0' to 5/8" Pin Driven in Top of Stump.
Stump is painted red and has an aluminum washer nailed to.
Set metal fence post, with survey monument sign wired to,
beside brass cap.

Location & Comments

Corner lies on South-Compass Declination 20 1/2
easterly slope about Firm/Agency Roberts
50' South of East- Surveying Inc.
West spur ridge Address 29 West 29th St.
Eugene, Oregon 97405
Party Chief Les Roberts
Notes Ted Baker
Witness Stu Duce

Surveyor's Seal



C.S. File No. 63/18-1F

M99-7

FILED
RECEIVED *z/h*

OREGON CORNER RESTORATION FORM

JUL 9 1985

Section 20 Township 20S Range 7W

COUNTY SURVEYOR
DOUGLAS COUNTY, ORE.

County Douglas Date 4-24-85

Corner Designation

C.E. 1/16 Corner
Section 20

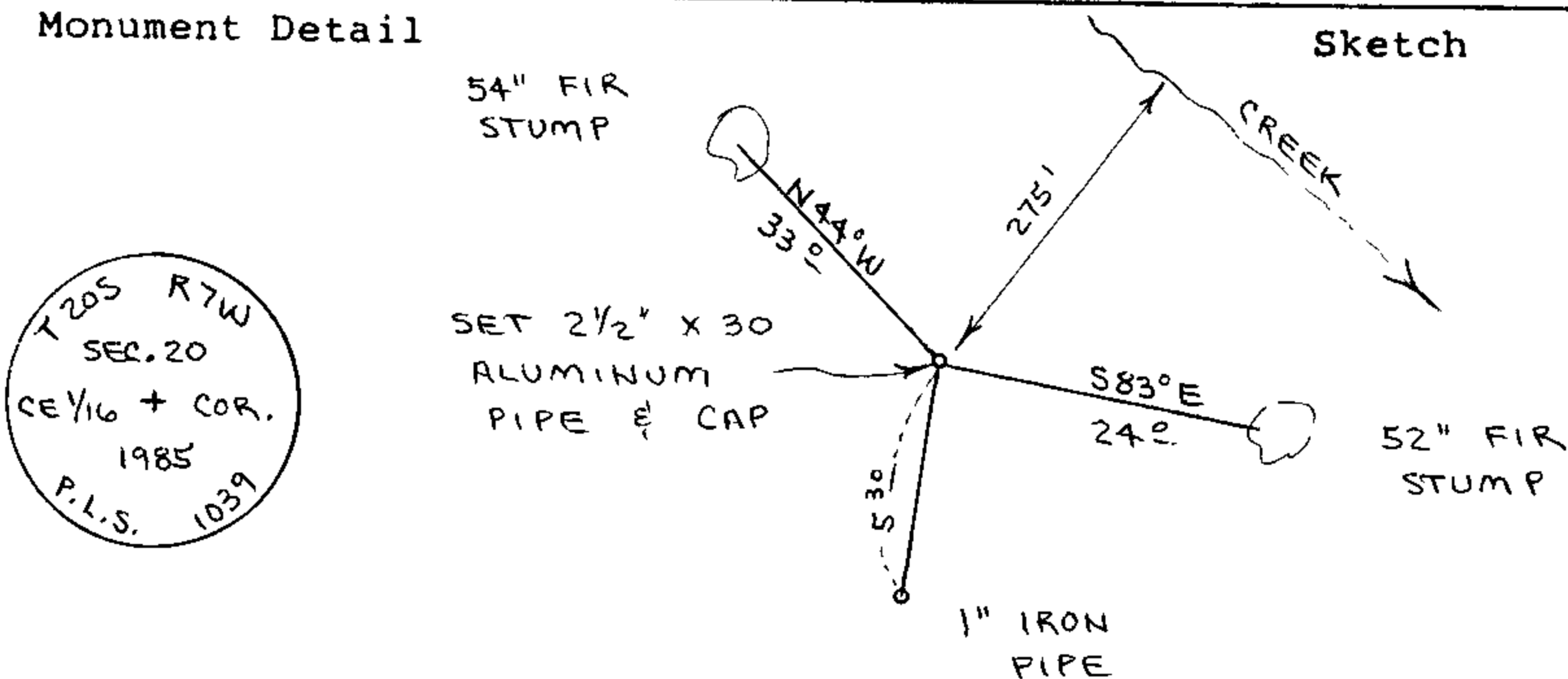
- Condition Report Only
- Not Found
- Renewed
- Unrecorded
- Surveyed In
- Referenced Out

Previous Renewals/Surveys, etc. Leon Olson's Survey dated 12-05-66
See C.S. File No. 54/37

Monument(s) & Accessories Found: (Condition and Source)

1" Iron Pipe
35" Cedar Stump, N22E, 14.0'
60" Fir Stump, N81E, 24.2'

Monument Detail



Monument Set (Procedures and Description)

Set 2 1/2" x 30" Aluminum Pipe and Cap. Buried Purple Magnetic Marker Under Pipe. Olson's 1" Iron Pipe Bears S 5° 38' 45" W, 5.30'. See filed Survey for Procedures.

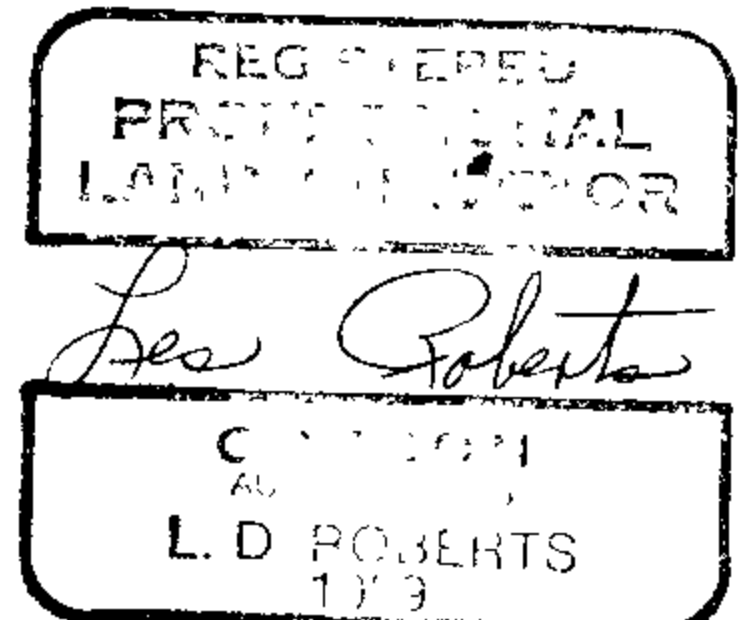
New Accessories

52" Fir Stump, S83E, 24.0' to 5/8" Pin Driven in Top of Stump.
54" Fir Stump, N44W, 33.0' to 5/8" Pin Driven in Top of Stump.
Both stumps painted red and have aluminum washers nailed to.
Set metal fence post, with survey monument sign wired to,
beside aluminum pipe.

Location & Comments

Corner lies on North-Compass Declination 20 1/2
easterly slope about 275' above creek
Firm/Agency Roberts
Surveying Inc.
Address 29 West 29th St.
Eugene, Oregon 97405
Party Chief Les Roberts
Notes Ted Baker
Witness Stu Duce

Surveyor's Seal



C.S. File No. 63/18-19

M 99-7

FILED

RECEIVED *✓*

JUL 9 1985

OREGON CORNER RESTORATION FORM

Section 20 Township 20S Range 7W

County Douglas Date 4-24-85

COUNTY SURVEYOR
DOUGLAS COUNTY, ORE.

Corner Designation

V.E. 1/16 Corner
Section 20

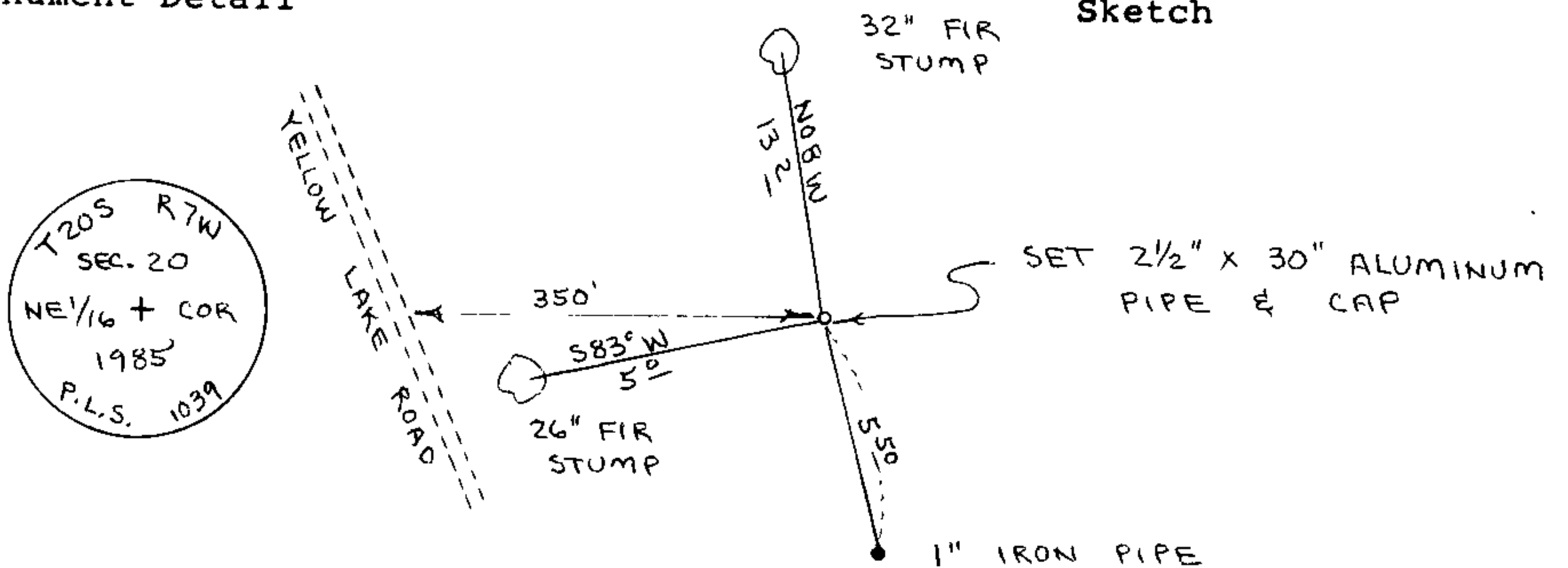
- Condition Report Only
- Not Found
- Renewed
- Unrecorded
- Surveyed In
- Referenced Out

Previous Renewals/Surveys, etc. Leon Olson's Survey dated 12-05-66
See C.S. file No. 54/37

Monument(s) & Accessories Found: (Condition and Source)

- 1" Iron Pipe
- 16" Fir Stump, N66W, 12.5'
- 23" Fir Stump, S44E, 4.2'

Monument Detail



Monument Set (Procedures and Description)

Set 2 1/2" x 30" Aluminum Pipe and Cap. Buried Purple Magnetic Marker Under Pipe. Olson's 1" Iron Pipe Bears S 9° 14' 15" E, 5.50'. See filed Survey for Procedures.

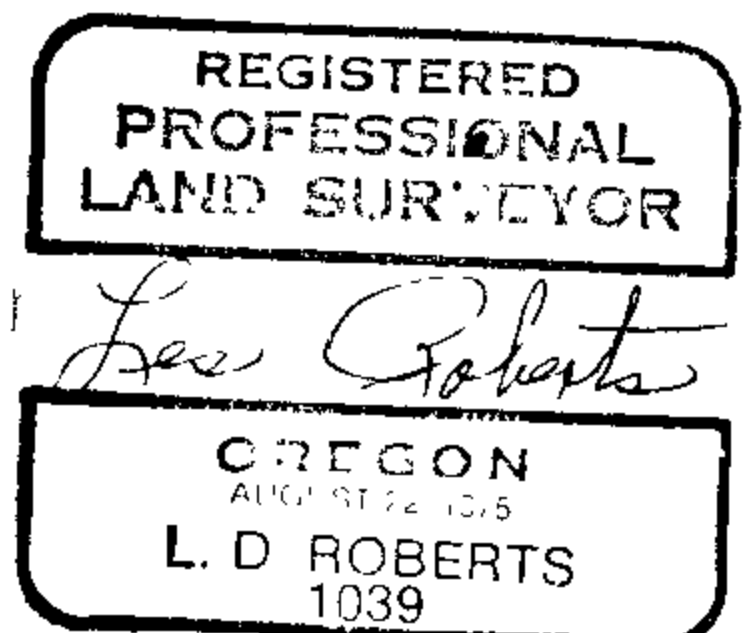
New Accessories

26" Fir Stump, S83W, 5.0' to 5/8" Pin Driven in Top of Stump
32" Fir Stump, N08W, 13.2' to 5/8" Pin Driven in Top of Stump.
Both Stumps Painted Red and have Aluminum Washers Vailed to.
Set metal fence post, with survey monument sign wired to, beside aluminum pipe.

Location & Comments

Corner lies on West-erly slope about 350' East of Yellow Lake Road
Compass Declination 20 1/2
Firm/Agency Roberts Surveying Inc.
Address 29 West 29th St. Eugene, Oregon 97405
Party Chief Les Roberts
Notes Ted Baker
Witness Stu Duce

Surveyor's Seal



C.S. File No. 63/18-1H

M 99-7

FILED
RECEIVED *LR*

OREGON CORNER RESTORATION FORM

JUL 9 1985

Section 20 Township 20S Range 7W

COUNTY SURVEYOR
DOUGLAS COUNTY, ORE.

County Douglas Date 4-23-85

Corner Designation

C.N. 1/16 Corner
Section 20

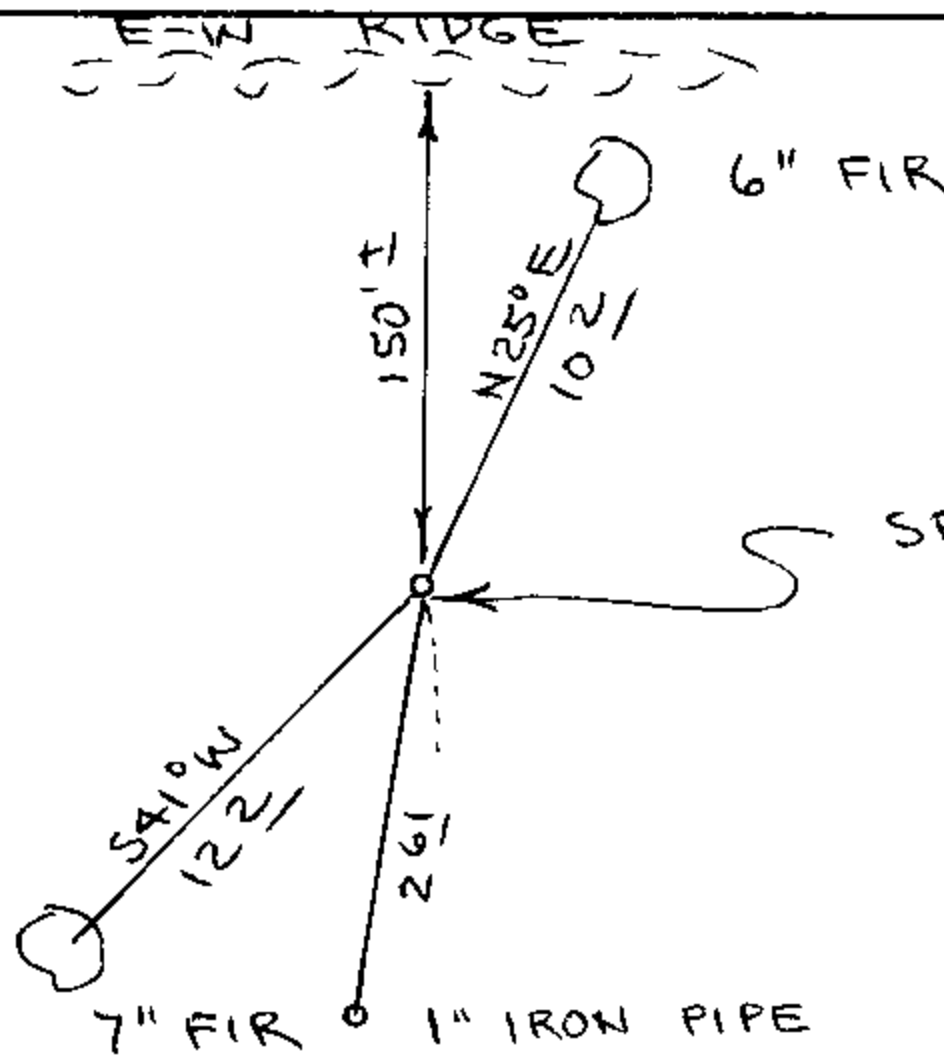
- Condition Report Only
- Not Found
- Renewed
- Unrecorded
- Surveyed In
- Referenced Out

Previous Renewals/Surveys, etc. Leon Olson's Survey dated 12-05-66
See C.S. File No. 54/37

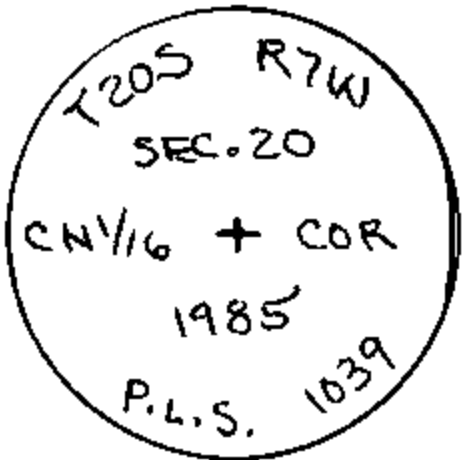
Monument(s) & Accessories Found: (Condition and Source)

- 1" Iron Pipe
- 42" Fir Stump, S08W, 11.1'
- 43" Fir Stump, V63W, 19.7'

Monument Detail



Sketch



Monument Set (Procedures and Description)

Set 2 1/2" x 30" Aluminum Pipe and Cap. Buried Purple Magnetic Marker Under Pipe. Olson's 1" Iron Pipe Bears S 12° 22' 45" W, 2.61'. See filed Survey for Procedures.

New Accessories

- 6" Fir, N25E, 10.2' to Spike (Scribed/Alum. Washer/Painted Red)
- 7" Fir, S41W, 12.2' to Spike (Scribed/Alum. Washer/Painted Red)
- Set metal fence post, with survey monument sign wired to, beside aluminum pipe.

Location & Comments

Corner lies on steep South slope about 150' below East-West ridge

Compass Declination 20 1/2

Firm/Agency Roberts Surveying Inc.

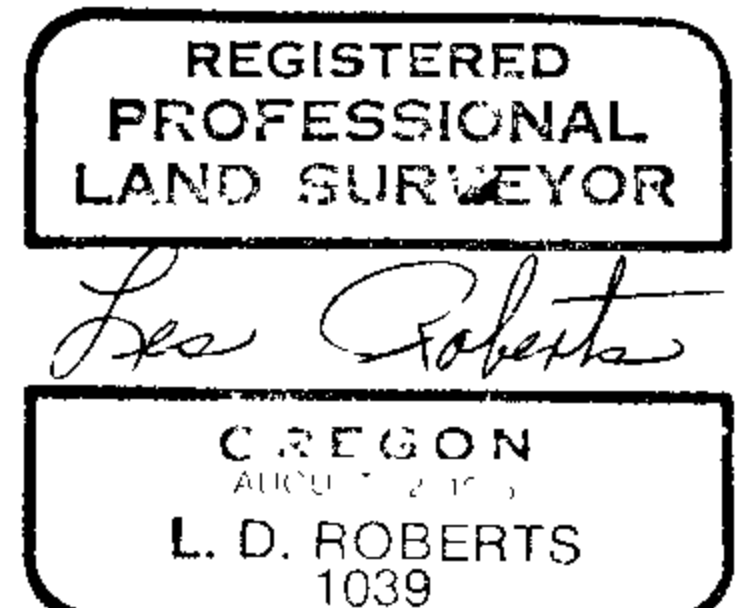
Address 29 West 29th St. Eugene, Oregon 97405

Party Chief Les Roberts

Notes Ted Baker

Witness Stu Duce

Surveyor's Seal



C.S. File No. 63/18-71

M 99-7

FILED
RECEIVED *z/s*

OREGON CORNER RESTORATION FORM

JUL 9 1985

Section 20 Township 20S Range 7W

County Douglas Date 4-23-85

COUNTY SURVEYOR
DOUGLAS COUNTY, ORE.

Corner Designation

C.S. 1/16 Corner
Section 20

- Condition Report Only
- Not Found
- Renewed
- Unrecorded
- Surveyed In
- Referenced Out

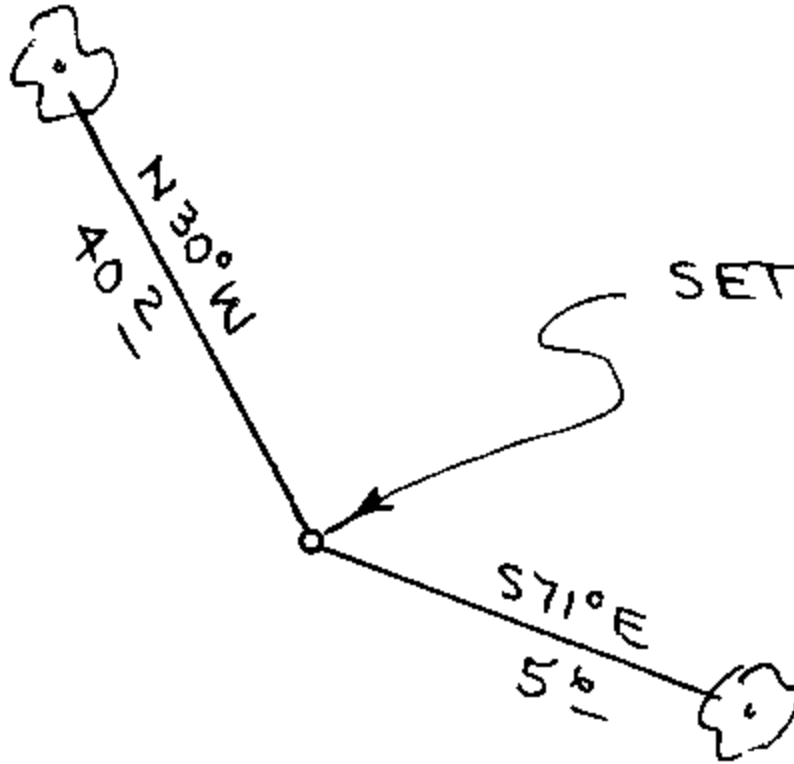
Previous Renewals/Surveys, etc. Leon Olson's Survey dated 12-05-66
C.S. File No. 54/37

Monument(s) & Accessories Found: (Condition and Source)

Not Set by Leon Olson

Monument Detail

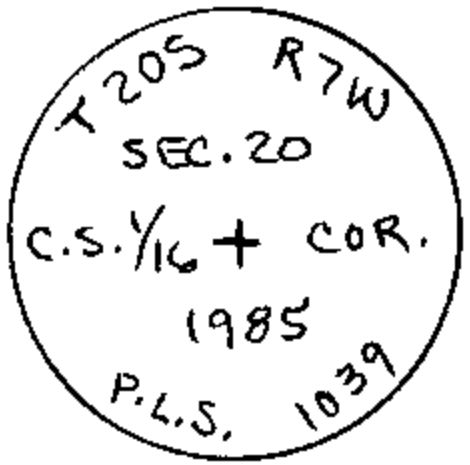
42" FIR
STUMP



Sketch

SET 2 1/2" X 30" ALUMINUM
PIPE & CAP

36" FIR
STUMP



Monument Set (Procedures and Description)

Set 2 1/2" x 30" Aluminum Pipe and Cap. Buried Purple Magnetic Marker Under Pipe. See Filed Survey for Procedures.

New Accessories

36" Fir Stump, S71E, 5.6' to 5/8" Pin Driven in Top of Stump.
42" Fir Stump, N30W, 40.2' to 5/8" Pin Driven in Top of Stump.
Both Stumps Painted Red and Have Aluminum Washers Nailed to.
Set Metal Fence Post, With Survey Monument Sign Wired To,
Beside Aluminum Pipe.

Location & Comments

Corner lies on South slope about 520' South of Dirt Road. Compass Declination 20 1/2'
Firm/Agency Roberts Surveying Inc.
Address 29 West 29th St. Eugene, Oregon 97405
Party Chief Les Roberts
Notes Ted Baker
Witness Stu Duce

Surveyor's Seal

REGISTERED
PROFESSIONAL
LAND SURVEYOR

Les Roberts

OREGON
AUG 22 1975
L. D. ROBERTS
1039

C.S. File No. 63/10-15

M 99-7

FILED
RECEIVED *HL*

OREGON CORNER RESTORATION FORM

JUL 9 1985

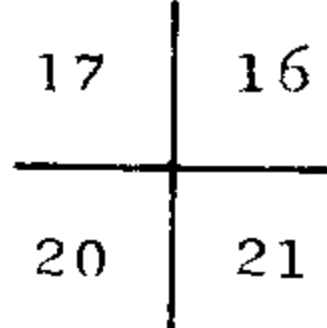
Section 20 Township 20S Range 7W

COUNTY SURVEYOR
DOUGLAS COUNTY, ORE.

County Douglas Date 3-22-85

Corner Designation

N.E. Corner
Section 20



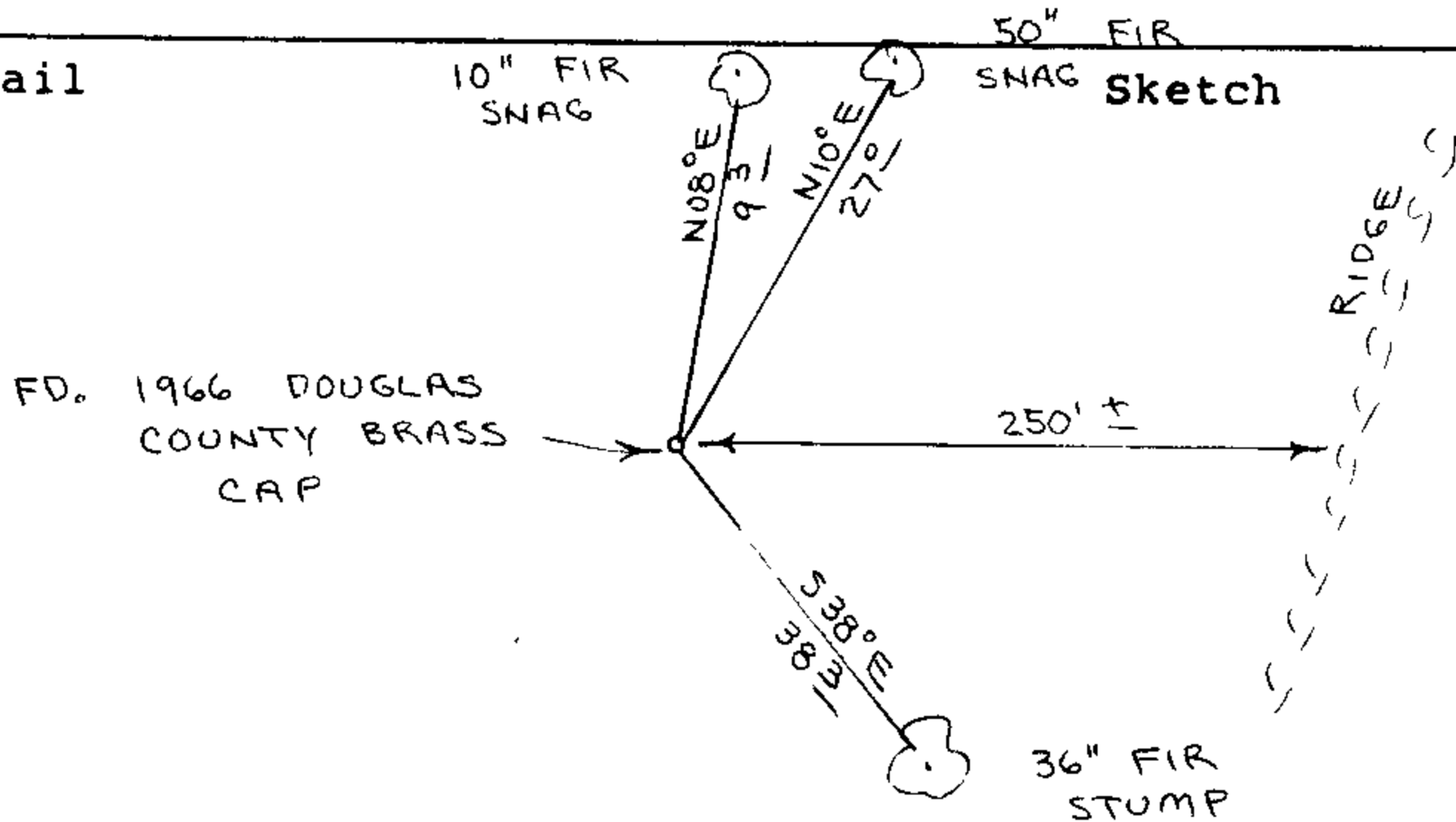
- Condition Report Only
- Not Found
- Renewed
- Unrecorded
- Surveyed In
- Referenced Out

Previous Renewals/Surveys, etc. Thomas E. Todd 1891 G.L.O. Survey.
Douglas County Renewals 55 and 83.

Monument(s) & Accessories Found: (Condition and Source)

Found 1966 Douglas County Brass Cap set firmly in ground.
50" Fir Snag, N10E, 27.0' (Scribe Vis.), 1891 BT. Rec. N08E, 26.4'
10" Fir Snag, N08E, 9.3' (Scribe Vis.), 1966 BT. Rec. N06E, 8.7'
36" Fir Stump, S38E, 38.3' (Scribe Vis.), 1983 BT. Rec. S38E, 38.3'
Also found metal fence post and survey monument sign beside
brass cap.

Monument Detail



Monument Set (Procedures and Description)

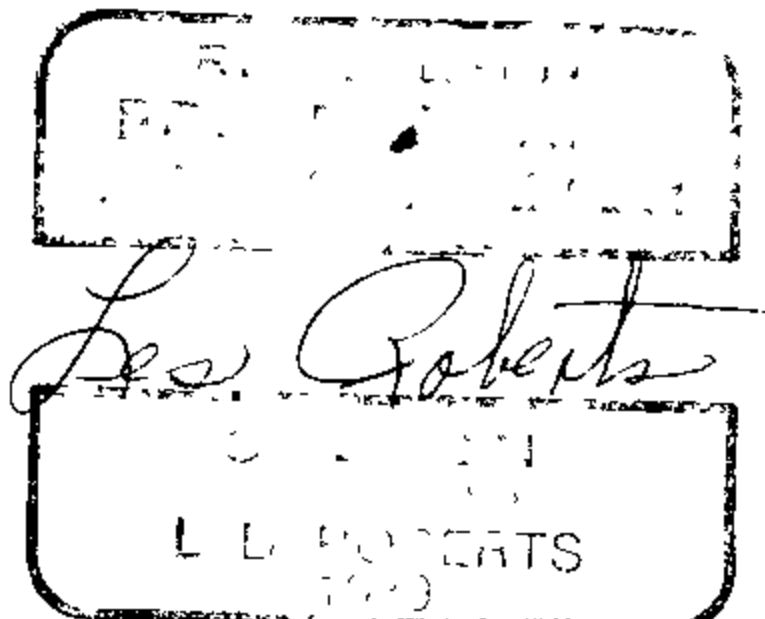
New Accessories

No new B.T.'s Set

Location & Comments

Corner lies on steep West slope about 250' west of top of ridge
Compass Declination $20\frac{1}{2}$
Firm/Agency Roberts Surveying Inc.
Address 29 West 29th St. Eugene, Oregon 97405
Party Chief Les Roberts
Notes Ted Baker
Witness Stu Duce

Surveyor's Seal



C.S. File No. 63/18-1K

M 99-7

FILED
RECEIVED *zh*

OREGON CORNER RESTORATION FORM

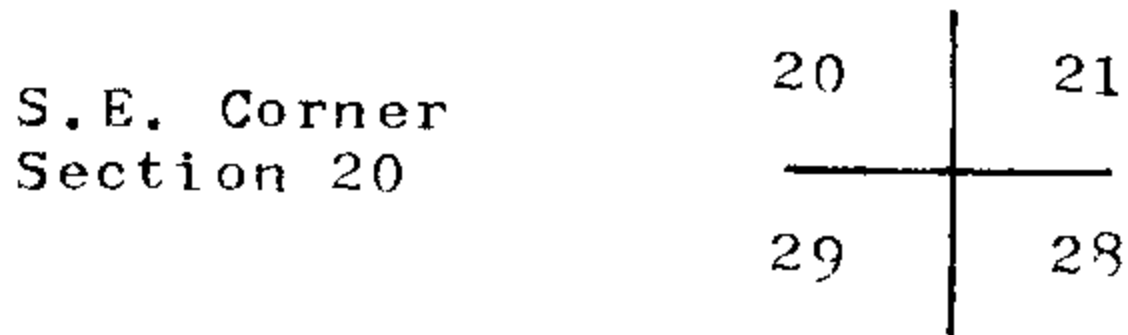
JUL 9 1985

Section 20 Township 20S Range 7W

COUNTY SURVEYOR
DOUGLAS COUNTY, ORE.

County Douglas Date 3-22-85

Corner Designation



- Condition Report Only
- Not Found
- Renewed
- Unrecorded
- Surveyed In
- Referenced Out

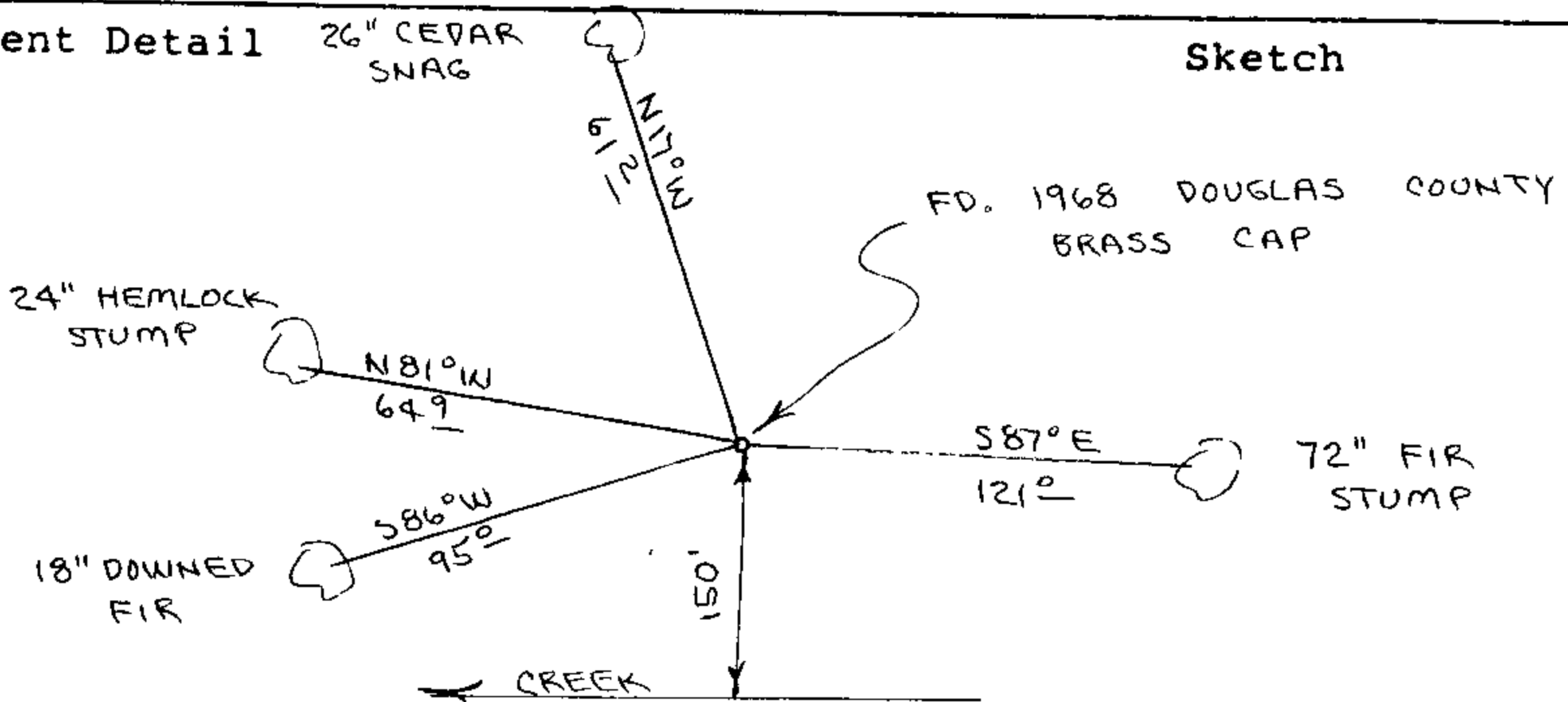
Previous Renewals/Surveys, etc. Thomas E. Todd 1891 G.L.O. Survey
Douglas County Renewals 12, 58 and 73.

Monument(s) & Accessories Found: (Condition and Source)

Found 1968 Douglas County Brass Cap set firmly in ground. Also
found 1" "T" Iron and metal fence post beside brass cap.

- 26" Cedar Snag, N17W, 61.2' (No Marks), 1961 BT. Rec. N16W, 71.4'
- 18" Downed Fir, S86W, 95.0' (Scribe Vis.), 1966 BT. Rec. S86W, 94.9'
- 24" Hem. Stump, N81W, 64.9' to 5/8" Pin, 1966 BT. Rec. N81W, 67.0'
- 72" Fir Stump, S87E, 121.0' to 5/8" Pin, 1968 BT. Rec. S80E, 120.1'

Monument Detail



Monument Set (Procedures and Description)

No new B.T.'s Set. Wired survey monument sign to metal fence
post.

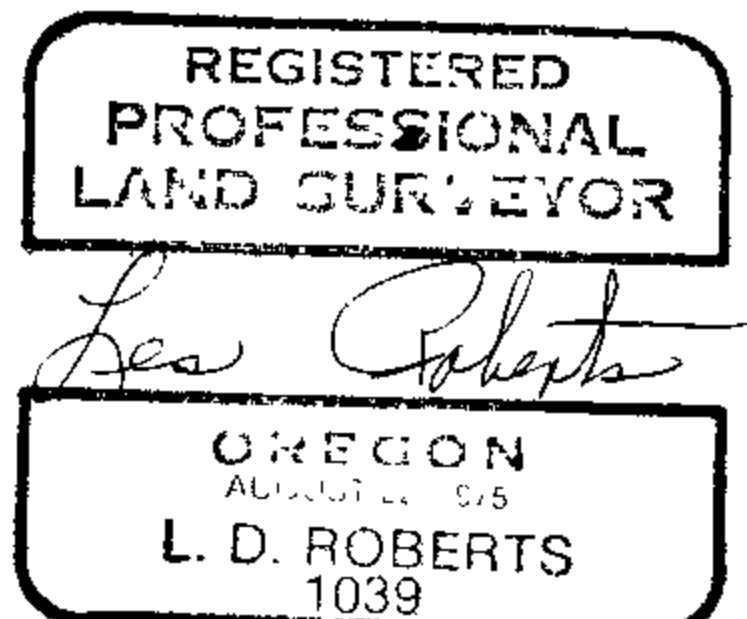
New Accessories

Location & Comments

Corner lies on South
slope about 150'
North of Creek

Compass Declination 20 1/2
Firm/Agency Roberts
Surveying Inc.
Address 29 West 29th St.
Eugene, Oregon 97405
Party Chief Les Roberts
Notes Ted Baker
Witness Stu Duce

Surveyor's Seal



C.S. File No. 63/18-16

M 99-7

FILED
RECEIVED *2/8*

OREGON CORNER RESTORATION FORM

JUL 9 1985

Section 20 Township 20S Range 7W

COUNTY SURVEYOR
DOUGLAS COUNTY, ORE.

County Douglas Date 3-22-85

Corner Designation

North $\frac{1}{4}$ Corner 17
Section 20

20

- Condition Report Only
- Not Found
- Renewed
- Unrecorded
- Surveyed In
- Referenced Out

Previous Renewals/Surveys, etc. Thomas E. Todd 1891 G.L.O. Survey.
Douglas County Renewals 9 and 60

Monument(s) & Accessories Found: (Condition and Source)

Found 1966 Douglas County Brass Cap set firmly in ground.

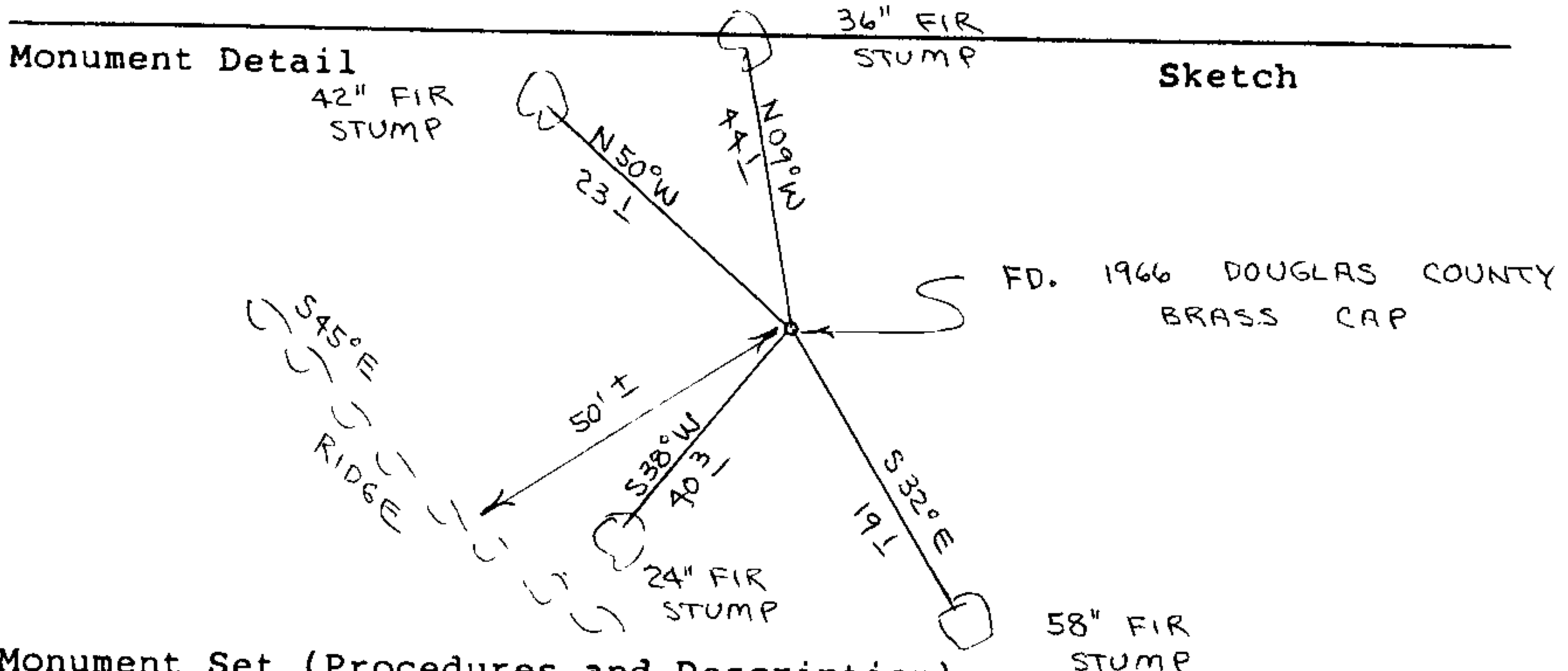
1" "T" Iron found beside Brass Cap.

42" Fir Stump, N50W, 23.1' (Scar Vis.) , 1891 BT. Rec. N44W, 23.8'

58" Fir Stump, S32E, 19.1' (No Marks) , 1891 BT. Rec. S34E, 19.1'

24" Fir Stump, S38W, 40.3' (Scribe Vis.), 1966 BT. Rec. S39W, 40.5'

36" Fir Stump, N09W, 44.1' (Scribe Vis.), 1966 BT. Rec. N10W, 44.2'



Monument Set (Procedures and Description)

New Accessories

No new B.T.'s Set. Set metal fence post, with survey monument sign wired to, beside brass cap.

Location & Comments

Corner lies on N.E. slope about 50' East of ridge top. Ridge bears S45E

Compass Declination 20 $\frac{1}{2}$

Firm/Agency Roberts Surveying Inc.

Address 29 West 29th St. Eugene, Oregon 97405

Party Chief Les Roberts

Notes Ted Baker

Witness Stu Duce

Surveyor's Seal

Les Roberts

M99-7

FILED
RECEIVED *zh*

OREGON CORNER RESTORATION FORM

JUL 9 1985

Section 20 Township 20S Range 7W

COUNTY SURVEYOR
DOUGLAS COUNTY, ORE.

County Douglas Date 3-22-85

Corner Designation

East $\frac{1}{4}$ Corner
Section 20

20 | 21

- Condition Report Only
- Not Found
- Renewed
- Unrecorded
- Surveyed In
- Referenced Out

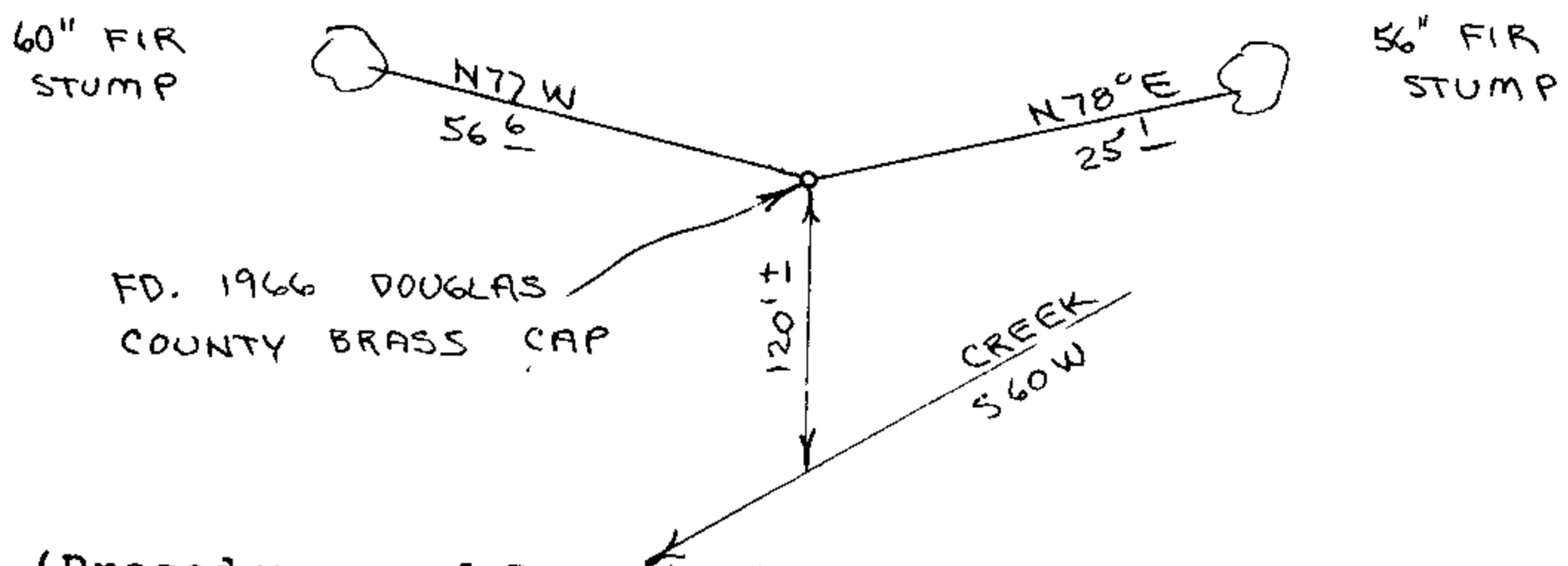
Previous Renewals/Surveys, etc. Thomas E. Todd 1891 G.L.O. Survey
Douglas County Renewals 63 and 74

Monument(s) & Accessories Found: (Condition and Source)

Found 1966 Douglas County Brass Cap set firmly in ground.
56" Fir Stump, N78E, 25.1' 5/8" Iron Pin in top of stump.
Scribe Vis., 1968 C.S.B.T. Record N76E, 25.2'
60" Fir Stump, N77W, 56.6' to 5/8" Iron Pin in top of stump.
Scribe Vis., 1968 C.S.B.T. Record N76W, 54.7'
Found metal fence post beside Brass Cap.

Monument Detail

Sketch



Monument Set (Procedures and Description)

New Accessories

No new B.T.'s Set. Wired survey monument sign to metal fence post.

Location & Comments

Corner lies on S.W.
slope about 120'
North of Creek. Creek
runs S60W

Compass Declination 20 $\frac{1}{2}$
Firm/Agency Roberts
Surveying Inc.
Address 29 West 29th St.
Eugene, Oregon 97405
Party Chief Les Roberts
Notes Ted Baker
Witness Stu Duce

Surveyor's Seal

