

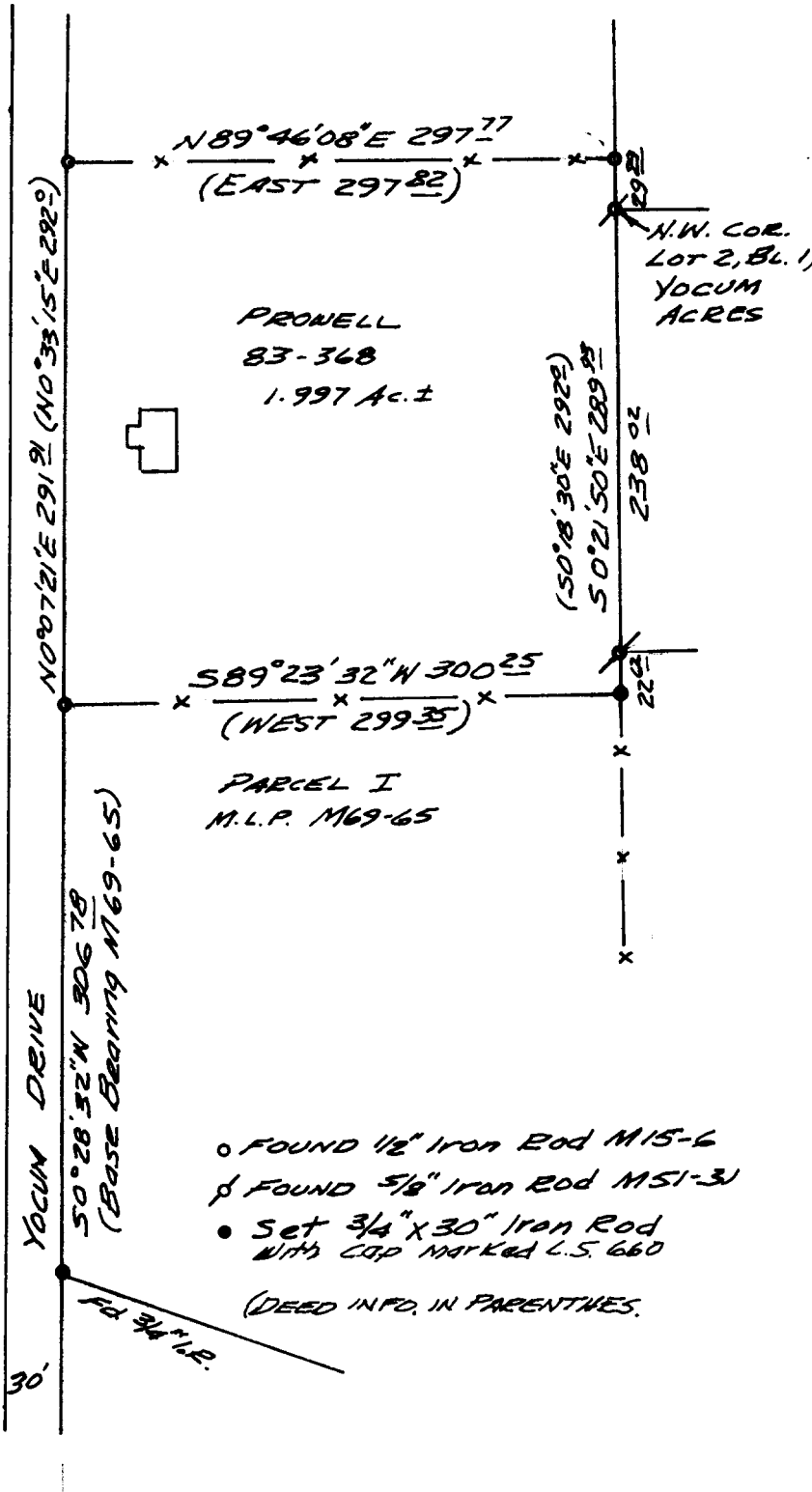
PROPERTY SURVEY FILE DATA
DO NOT REMOVE FROM OFFICE

PROPERTY LINE SURVEY
PART OF LOT 3, BL. 1, GLENGARY FRUIT LANDS
IN THE S.W. 1/4 OF SEC. 13, T. 28S., R. 6 W.W.M.
FOR VINCE PROWELL
by BRUCE ROGERS, 553 N.E. MEADOW, ROSEBURG, OR.
JULY, 1985 1"=100'

FILED CMO
RECEIVED *HR*

JUL 23 1985

COUNTY SURVEYOR
DOUGLAS COUNTY, ORE.
CMO



NARRATIVE

There are 5 parcels between Prowell's north line and the N.E. cor. of Lot 3, Bl. 1, Glengary Fruitlands. These parcels are tied to the N.E. cor of Lot 3 or the N.W. cor of Lot 4, Bl. 1, or both. A problem arises in the distance between these corners. Calculated from Woodford's survey it is 272.26 ft. On the deeds it appears as 301.5, creating an overlap of Prowell's N6. line of 29.24 ft. The corner tie for parcel I, M69-65 would leave a gap of 36.19 on Prowell's S0. Line.

We written agreement line descriptions for both these lines, tied to the N.W. corner of Lot 2, Bl. 1, Yocum Acres.
All work done with transit & chain.

REGISTERED
OR FIDELITY
LAND SURVEYOR

Bruce R. Rogers

JULY 10, 1984
BRUCE R. ROGERS
660