

FILED

RL

NOV 28 1986

OREGON CORNER RESTORATION FORM

Section 413 Township 29S Range 8W

County Douglas Date 9-26-86

COUNTY SURVEYOR
DOUGLAS COUNTY, ORE.

Corner Designation

Sect. corner 3,4,9,10.

- Condition Report Only
- Not Found
- Renewed
- Unrecorded
- Surveyed In
- Referenced Out

Previous Renewals/Surveys, etc. REN. # 156 county survey
File # 54/38 John M Powell

Monument(s) & Accessories Found: (Condition and Source)

FOUND A 2 1/2" BRASS CAP 18" ABOVE GROUND MARKED 34153
591510, T29S,
R8W, COUNTY Surveyors office DATED 1958 ALSO FOUND THE FOLLOWING

Bearing Trees

36" Fir Stump with Partially Visible Scribe N87° W 8' FT

15" white Fir with BLAZE S53° E 26' FT

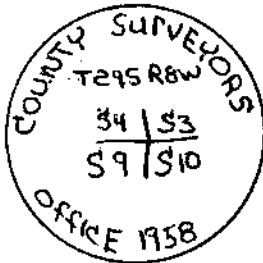
18" white Fir with BLAZE N61° E 41' FT (*pec. N.W.*) *RL*

36" Fir Stump with Partially Visible Scribe S70° E 8' FT

40" Doug Fir S60° W 15' FT

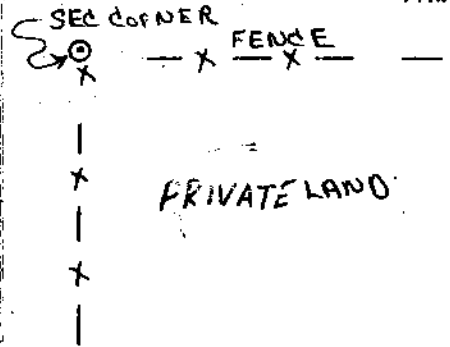
Monument Detail

Sketch SECOND Growth
Timber



↑
N

Second Growth
Timber with
A FEW Old
Growth Trees



Monument Set (Procedures and Description)

New Accessories

Location & Comments

MONUMENT IS LOOSE
in the Ground. we
Pounded Hubs Around
base to Stabilize.

Compass Declination _____
Firm/Agency O.D.O.T.

Address 1523 S.E. Cobb
Roseburg Ore

Party Chief L. LATHROP

Notes R. SMALL

Witness R. Wilcox

Surveyor's Seal

REGISTERED
PROFESSIONAL
LAND SURVEYOR

Roger E Paltz

OREGON
JULY 11, 1969
ROGER E. PALTZ
908