

FILED

SEP 12 1986

OREGON CORNER RESTORATION FORM

Section 20 Township 29S Range R8W

County Douglas Date 9-2-86

COUNTY SURVEYOR
DOUGLAS COUNTY, ORE.

Corner Designation

N.E. CORNER DIC #42

- Condition Report Only
- Not Found
- Renewed
- Unrecorded
- Surveyed In
- Referenced Out

Previous Renewals/Surveys, etc. RE 152 9/9/70 J.M. Powell

Monument(s) & Accessories Found: (Condition and Source)

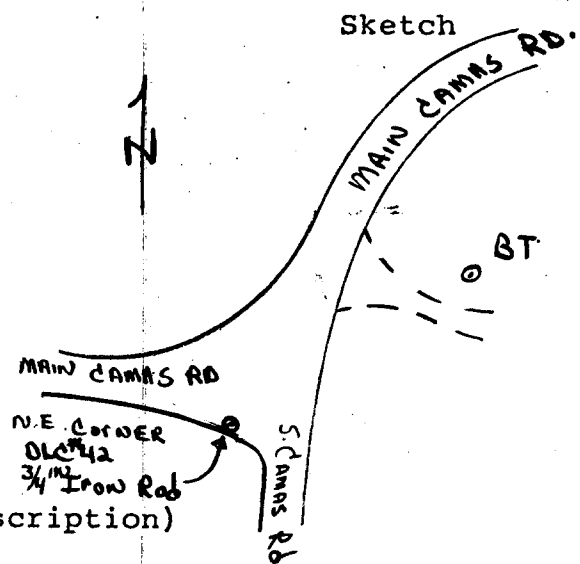
Found 3/4" Iron Rod Flush with Pavement Surface on south edge of Rd.

Also found the following Bearing TREES

A 28.1W W OAK S 62° W 53.5 FT BLAZE HEALED

38.1W D Fir N 76° 34' E 285.8 FT BLAZE HEALED

Monument Detail



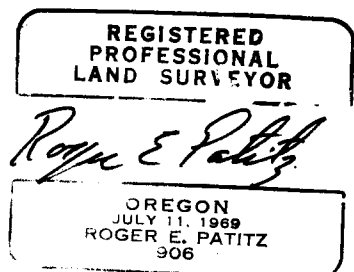
Monument Set (Procedures and Description)

New Accessories

Location & Comments

Iron Rod is Flush with Pavement
0' onto MAIN CAMAS Rd. From South Edge of Pavement
 Compass Declination _____
 Firm/Agency O DOT
 Address 1525 SE COBB Roseburg Ore
 Party Chief L LATHROP
 Notes R SMALL
 Witness R WILCOX

Surveyor's Seal



C.S. File No. 63/9-26