

FILED

JP

SEP 12 1986

OREGON CORNER RESTORATION FORM

Section 19-20-30-29 Township 29S Range 8W

COUNTY SURVEYOR
DOUGLAS COUNTY, ORE.

County Douglas Date 9-2-86

Corner Designation
Sec Corner 19|20
30 29

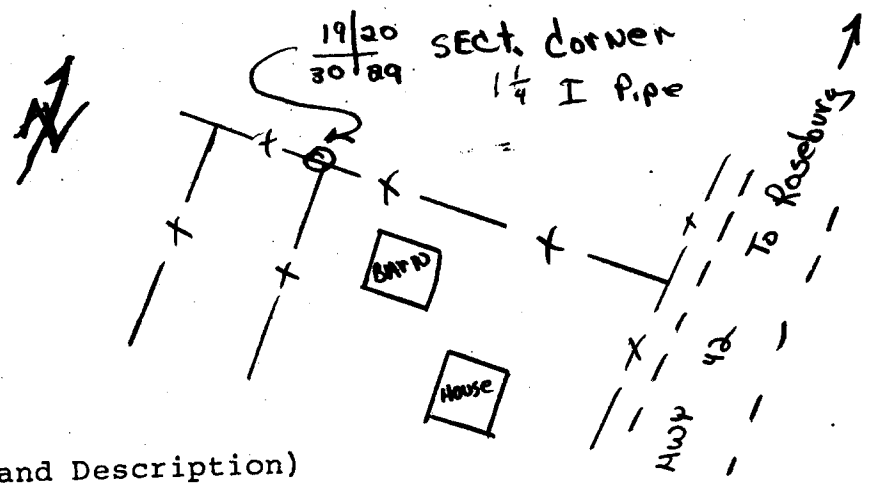
- Condition Report Only
- Not Found
- Renewed
- Unrecorded
- Surveyed In
- Referenced Out

Previous Renewals/Surveys, etc. RE #2 APRIL 23, 1923

Monument(s) & Accessories Found: (Condition and Source)
FOUND Sect CORNER common to Sect 19+20+30+29
A 1/4 IN Iron pipe
Also Found A Now 48 IN Pine (in SE corner of cemetery)
N32° E 537.0 FT BLAZE MEASD

Monument Detail

Sketch



Monument Set (Procedures and Description)

New Accessories

Location & Comments

Surveyor's Seal

Compass Declination _____
 Firm/Agency ODOT

Address 1523 S E Cobb
Roseburg Ore
 Party Chief L Lathrop
 Notes R SMALL
 Witness R Wilcox

REGISTERED
 PROFESSIONAL
 LAND SURVEYOR

Roger E. Patitz

OREGON
 JULY 11, 1969
 ROGER E. PATITZ
 906