

FILED

SEP 12 1986

OREGON CORNER RESTORATION FORM

Section 9 Township 29S Range 8W  
County Douglas Date 7-3-86

COUNTY SURVEYOR  
DOUGLAS COUNTY, ORE.

Corner Designation

E 1/16 center section 9

- Condition Report Only
- Not Found
- Renewed
- Unrecorded
- Surveyed In
- Referenced Out

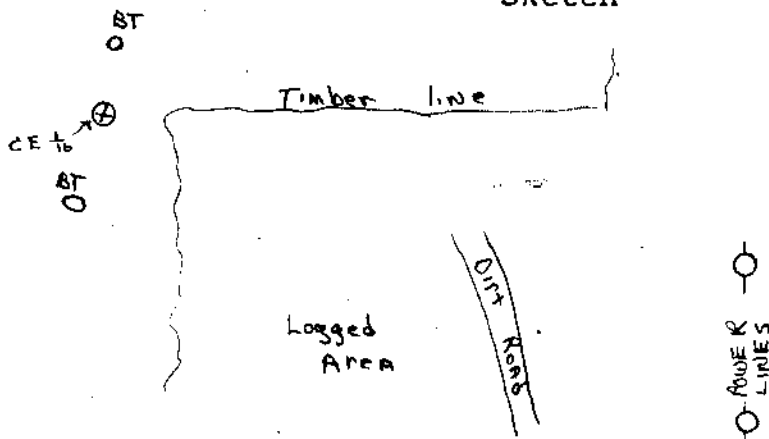
Previous Renewals/Surveys, etc.

Monument(s) & Accessories Found: (Condition and Source)

Found A 3" BRASS CAP MARKED E 1/16 - C US DEPT OF  
 The INTERIOR BUR OF LAND MANAGEMENT 1980. with A 5" IRON  
ROD ON WEST SIDE. ALSO Found the Following Bearing Trees  
13 IN W. Fir with open blaze N 3° W 28 1/2 INKS DATED 7/80  
12 IN W. Fir with open scribe @ base S 1/4 W 47 INKS DATED 7/80

Monument Detail

Sketch



Monument Set (Procedures and Description)

\_\_\_\_\_  
 \_\_\_\_\_  
 \_\_\_\_\_  
 \_\_\_\_\_

New Accessories

\_\_\_\_\_  
 \_\_\_\_\_  
 \_\_\_\_\_  
 \_\_\_\_\_

Location & Comments

MON IS 3" BRASS DISC Compass Declination \_\_\_\_\_  
ON GALV. PIPE 1" ABOVE Firm/Agency \_\_\_\_\_  
GROUND. Set by \_\_\_\_\_  
BIM 1980 Address \_\_\_\_\_  
 \_\_\_\_\_ Party Chief \_\_\_\_\_  
 \_\_\_\_\_ Notes \_\_\_\_\_  
 \_\_\_\_\_ Witness \_\_\_\_\_

Surveyor's Seal

