

FILED

*JS*

JUN 9 1986

OREGON CORNER RESTORATION FORM

Section 2 Township 29 Range 6W

County Douglas Date 5/30/86

COUNTY SURVEYOR  
DOUGLAS COUNTY, ORE

Corner Designation

Section Corners to Secs. 1 & 2, T29-6W  
AND Secs. 35 & 36, T28-6  
N.E. Corner Section 2

- Condition Report Only
- Not Found
- Renewed
- Unrecorded
- Surveyed In
- Referenced Out

Previous Renewals/Surveys, etc. Renewed by County Surveyors office 10/23/73

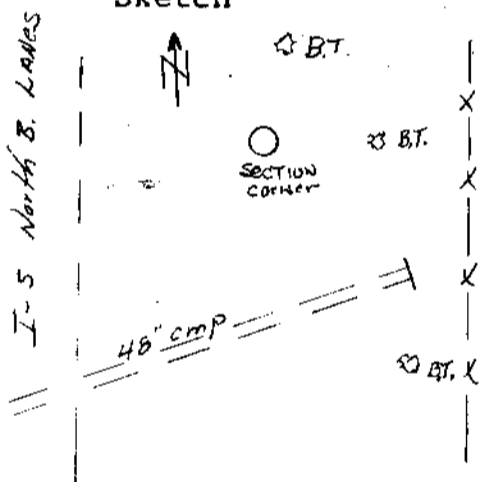
Monument(s) & Accessories Found: (Condition and Source)

- ✓ Found 2 1/2" Brass cap at section corner marked, County Surveyors office 1973, T28S R6W,  $\frac{535}{52} \frac{536}{51}$  T29S R6W, on 1/2" pipe 4" above ground. Also found the following Bearing Trees:
- ✓ 13" (Now 14") B. Oak N 3° W, 59.3 ft. with healed blaze and yellow tag.
- ✓ 22" W. Oak N 85 1/2° E 64.7 ft. with open blaze and scribed and yellow tag.
- ✓ 18" W. Oak S 34 1/2° E 196.4 ft. with open blaze and scribed and a yellow tag. All Bearing trees in good condition.

Monument Detail

- ✓ Found the 48" diam pipe that bears S 31° E still in place
- ✓ The 6" steel sign post that bears S 62° W has been replaced and is no longer good for R.P.

Sketch



Monument Set (Procedures and Description)

New Accessories

Location & Comments

The corner is approx. 100° ± East of I-S North Bound Lanes  
 Compass Declination \_\_\_\_\_  
 Firm/Agency O.D.O.T.  
 Address 1523 SE Cobb  
Roseburg, Oregon 97470  
 Party Chief L. Lathrop  
 Notes L. Lathrop  
 Witness R. Small

Surveyor's Seal