

FILED

JL

OREGON CORNER RESTORATION FORM

Section 25/30 Township 28 S Range 7 W

JUN 9 1986

County Douglas Date March 25, 1985

COUNTY SURVEYOR
DOUGLAS COUNTY, ORE.

Corner Designation

1/4 section TO sections 25 & 30

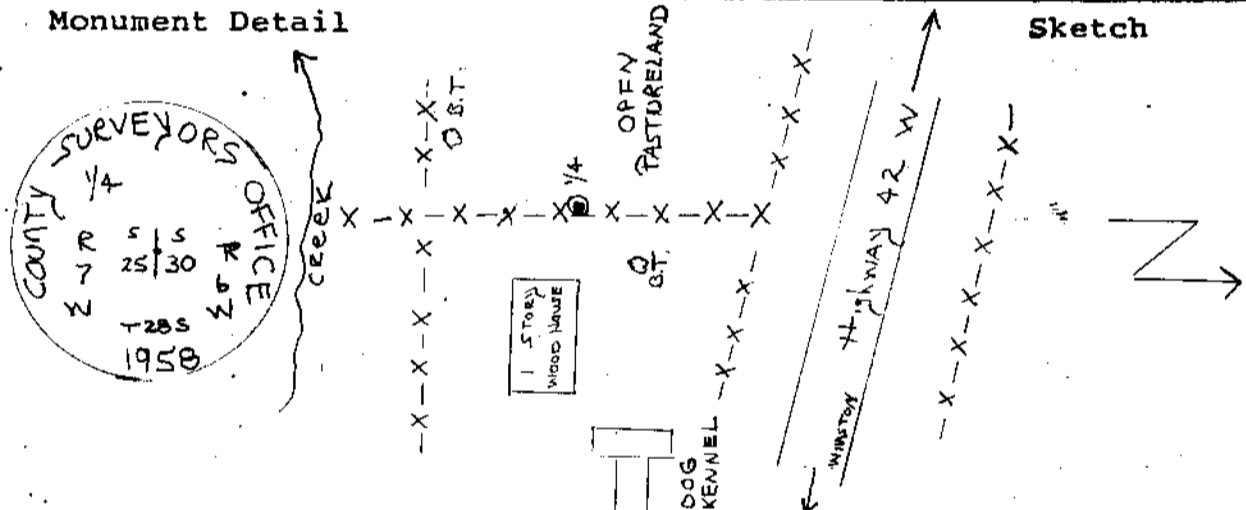
- Condition Report Only
- Not Found
- Renewed
- Unrecorded
- Surveyed In
- Referenced Out

Previous Renewals/Surveys, etc. Survey renewed by M. Godfrey and C. Dew, November 1958

Monument(s) & Accessories Found: (Condition and Source)

Found was a 2 1/2" Brass Disc on a 1" galvanized pipe, approx. 6" above the groundline, 0.3' west of a north-south fence line. Also found were two bearing trees. The first a 8" black oak, now a 15", bearing N 25° E at 96.7' with a beaded scribe. The second was a 6" pine, now a 27" pine bearing S 22 1/2° W at 173.3' with a beaded scribe. Both the monument and bearing trees were found to be in good condition.

Monument Detail



Sketch

Monument Set (Procedures and Description)

New Accessories

Location & Comments

Surveyor's Seal

above information is complete.
 Compass Declination _____
 Firm/Agency O. O. O. T.
 Address 1523 S.E. Cobb
Reelburg Oregon 97470
 Party Chief L. Lathrop
 Notes E. Smith
 Witness C. Black

O.S. File No. 63/2-6

✓