

FILED

JH

JUN 9 1986

OREGON CORNER RESTORATION FORM

Section 25 Township 28 S Range 7 W

County Douglas Date 2/8/85

COUNTY SURVEYOR
DOUGLAS COUNTY, ORE.

Corner Designation

1/4 TO Sections 25; 26

- Condition Report Only
- Not Found
- Renewed
- Unrecorded
- Surveyed In
- Referenced Out

Previous Renewals/Surveys, etc. originally surveyed by Nathaniel Ford,
County Surveyor in 1854. Re-established by G.G. Stewart, Sen. # 17.
also re-established by V. Tracy in 1968, C.S. file # 52/79.

Monument(s) & Accessories Found: (Condition and Source)

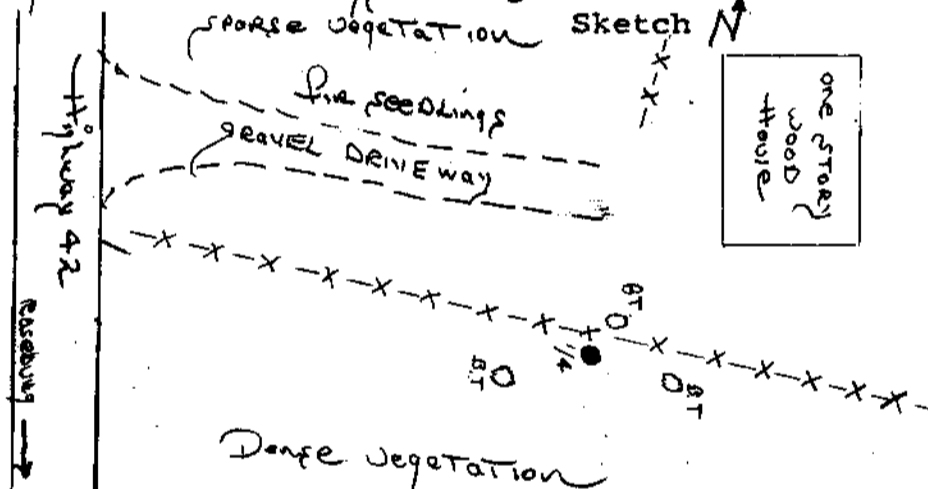
a 2" BRASS DISC mounted on 1" galvanized pipe 14" above groundline
was found to be in good condition. also found were four bearing
Trees. The first B.T. is an original, a Black Oak 18" now 24" alive
with healed blaze, bearing S 11° W, ^{22.15"} also found was a white oak 20" now
24" with healed blaze, bearing N 34° E, 5.8'. The following B.T. were
marked by V. Tracy, 1968. Found was a 7 Douglas Fir now 14" with
healed blaze, bearing S 82° E, 18.7. lastly a 9" Laurel now
14", bearing S 74° W, 16.7. all tags were intact.

*DISTANCE
ADDED
PER JOHN - OSHO
JH*

Monument Detail



2" BRASS DISC
on 1" galvanized pipe
14" above groundline



Monument Set (Procedures and Description)

New Accessories

Location & Comments

Corner lies at fence
Corner, fences running
N - E W. one story
wood house located N.E.
of corner. small
Creek bed approx 1'
wide just north of
fence

Compass Declination _____
Firm/Agency O.D.O.T.
Address 1523 S.E. CORR
Roseburg, Oregon 97470
Party Chief L. Hathrop
Notes R. Small
Witness _____

Surveyor's Seal

C.S. File No. 63/9-5