

FILED *SR*

JUN 9 1986

OREGON CORNER RESTORATION FORM

Section ²⁶ ~~35~~ ²⁵ ~~36~~ Township 28.5 Range 7 W

COUNTY SURVEYOR
DOUGLAS COUNTY, ORE.

County Douglas Date 2/8/85

Corner Designation

Section Corner Common To
Sections 25, 26, 35, 36

- Condition Report Only
- Not Found
- Renewed
- Unrecorded
- Surveyed In
- Referenced Out

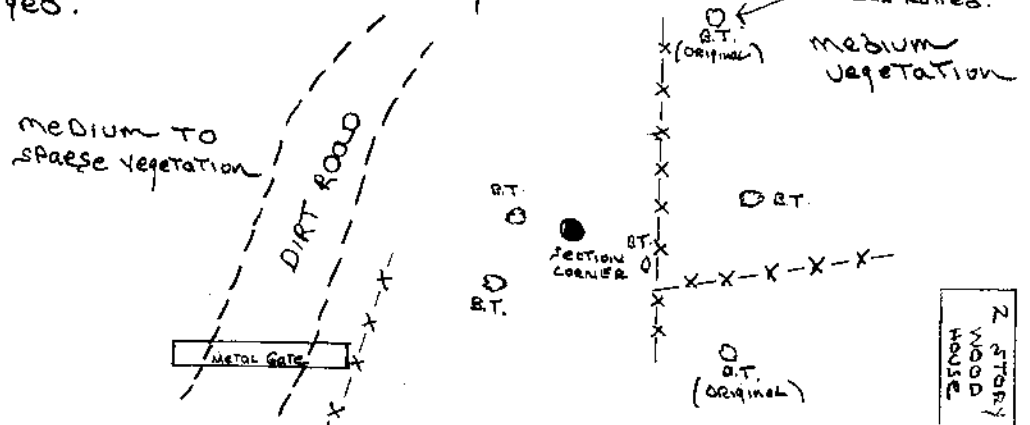
Previous Renewals/Surveys, etc. originally surveyed by Nathaniel Ford, Deputy Surveyor in May 1854. Re-established by James Byson in 1958. See County Surveyor File # 49/50.

Monument(s) & Accessories Found: (Condition and Source)

- Found a 2" Brass Disc mounted on 1" galvanized pipe, 13" above groundline. also found were six (6) bearing trees, two original.
- Found originally 15" now 38" Black oak, bearing S 5° W 458.7, with healed blaze, also a 30" white oak, still 30" bearing N 60° W, 42.9, with rotted center, no scribe. These were both original. In addition found
- 10" W. oak, now 15", with healed blaze, bearing N 84° W, 4.4, also a
- 8" B. oak, now 14", with healed blaze, bearing S 51° W 46.9, also a
- 13" W. oak, now 18", with healed blaze, bearing N 89° E 12.8, finally a

Monument Detail
13" W. oak, now 16", with healed blaze, bearing S 65° E. 13.7.
Last 4 B.T.'s were tagged.

Rec. N872
Corrected
6/11/86 - P22
John - OSHO -
Z.H.



Monument Set (Procedures and Description)

New Accessories

Location & Comments

Corner just above
DIRT RD and just east
of metal form gate.
Corner is 7' from
fence. The fence bears
N 9° W.

Compass Declination _____
 Firm/Agency O.D.O.T
 Address 1523 S.E. COOB
Roseburg, Oregon 97470
 Party Chief L. Lathrop
 Notes R. Smalk
 Witness _____

Surveyor's Seal

C.S. File No. 63/9-4