

FILED  
RECEIVED *[Signature]*

FEB 22 1985

OREGON CORNER RESTORATION FORM

Section 17 Township 22 S Range 5 W

COUNTY SURVEYOR  
DOUGLAS COUNTY, ORE.

County Douglas Date 7/13/84

Corner Designation

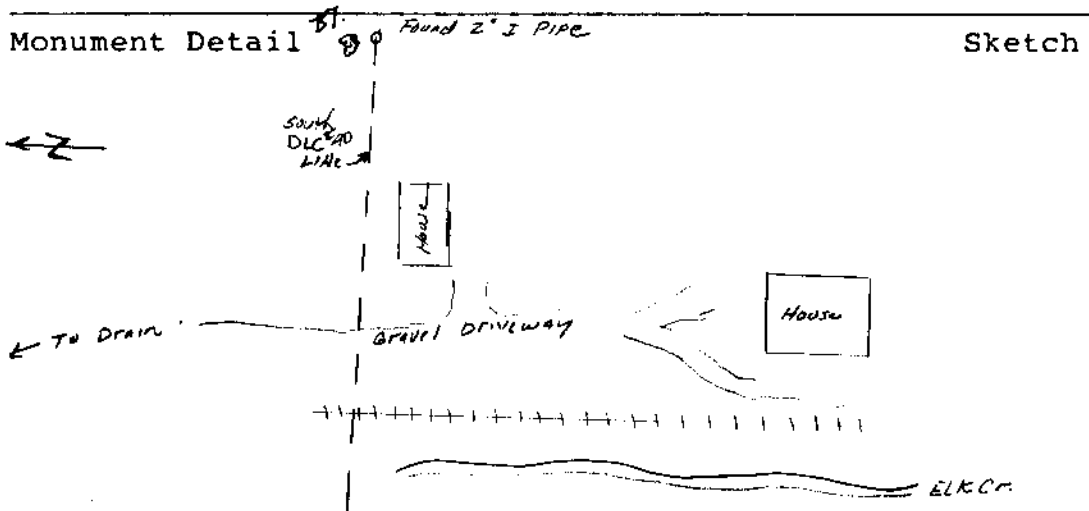
S.E. Corner of Warren N. Goodell's  
D.L.C. #40

- Condition Report Only
- Not Found
- Renewed
- Unrecorded
- Surveyed In
- Referenced Out

Previous Renewals/Surveys, etc. Original Corner set by D. Hathorn  
Nov. 8, 1856. First Renewal by N.E. Richardson March 24, 1948 renewal  
# 17

Monument(s) & Accessories Found: (Condition and Source)

Found 2" I. PIPE 12" ABOVE GROUND IN GOOD CONDITIONS.  
FOUND BT. 8" W. OAK NOW A 12" W. OAK. Bears N 65° W 10.7 ft  
with beaded blaze. Marked by N.E. Richards March 24, 1948



Monument Set (Procedures and Description)

\_\_\_\_\_  
\_\_\_\_\_  
\_\_\_\_\_

New Accessories

\_\_\_\_\_  
\_\_\_\_\_  
\_\_\_\_\_

Location & Comments

Monument lies approx 970' East of Gravel Driveway  
Compass Declination  
Firm/Agency Oregon State Hwy. Div.  
Address 1523 S.E. COBB  
Roseburg, Oregon  
Party Chief L. Lathrop  
Notes  
Witness

Surveyor's Seal

