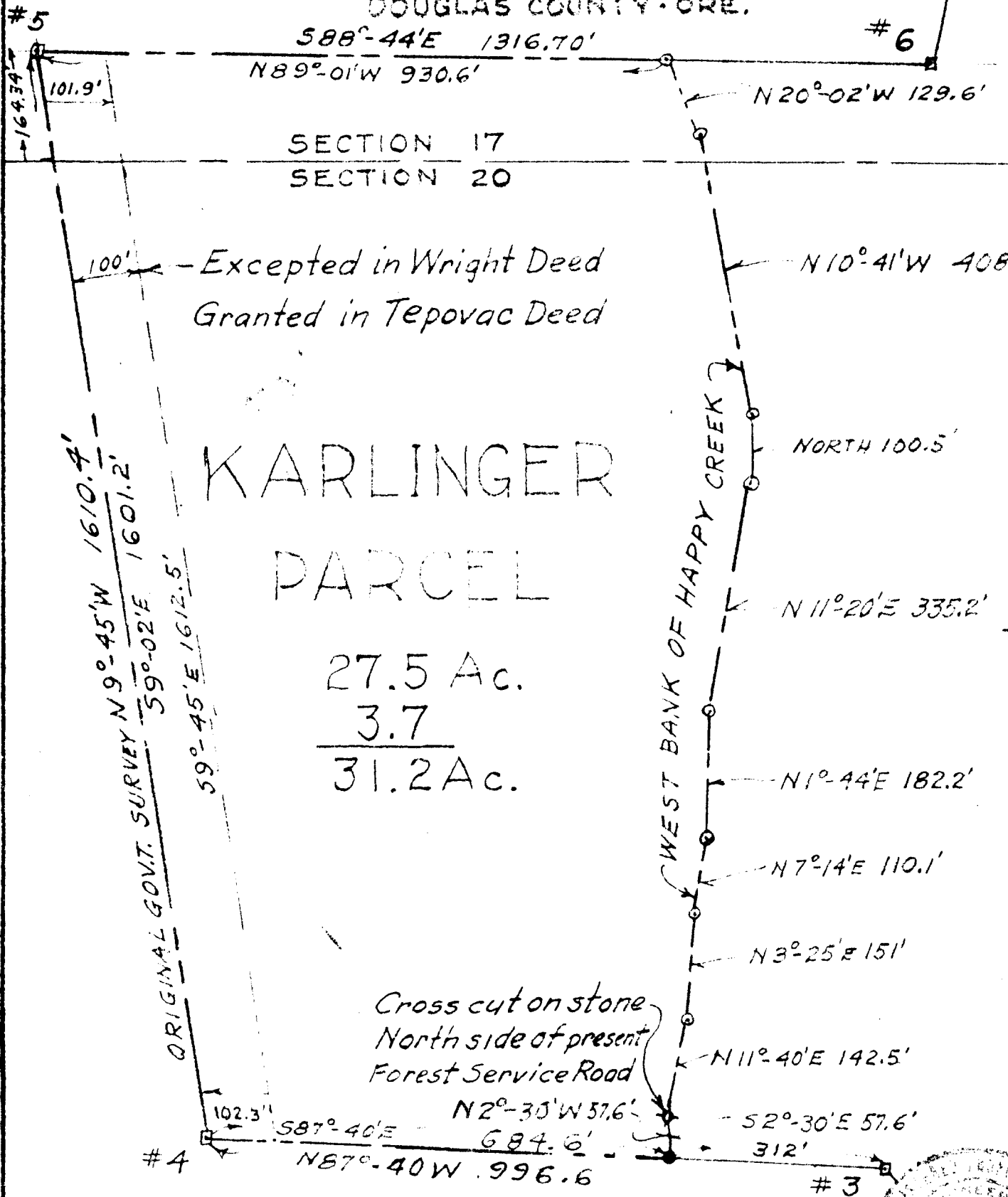


PARCEL IN H.E. 93·SECTS. 17 & 20·T26S·R2E·
DOUGLAS COUNTY·ORE.



PLATTED BY

JAMES R. DAUGHERTY

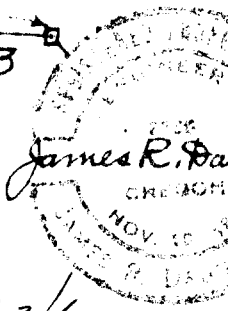
CIVIL-SANITARY ENGINEER

ROSEBURG·ORE.

SCALE 1"=200'

May 29, 1958

May 28, 1958.



C.S. File No. 63/6

COUNTY SURVEYORS FILE DATA
DO NOT REMOVE FROM OFFICE

FILED
RECEIVED *JR*
JAN 24 1985
COUNTY SURVEYOR
DOUGLAS COUNTY,

C.S. File NO. 63/6-1