

COUNTY SURVEYORS FILE DATA
DO NOT REMOVE FROM OFFICE

FILED

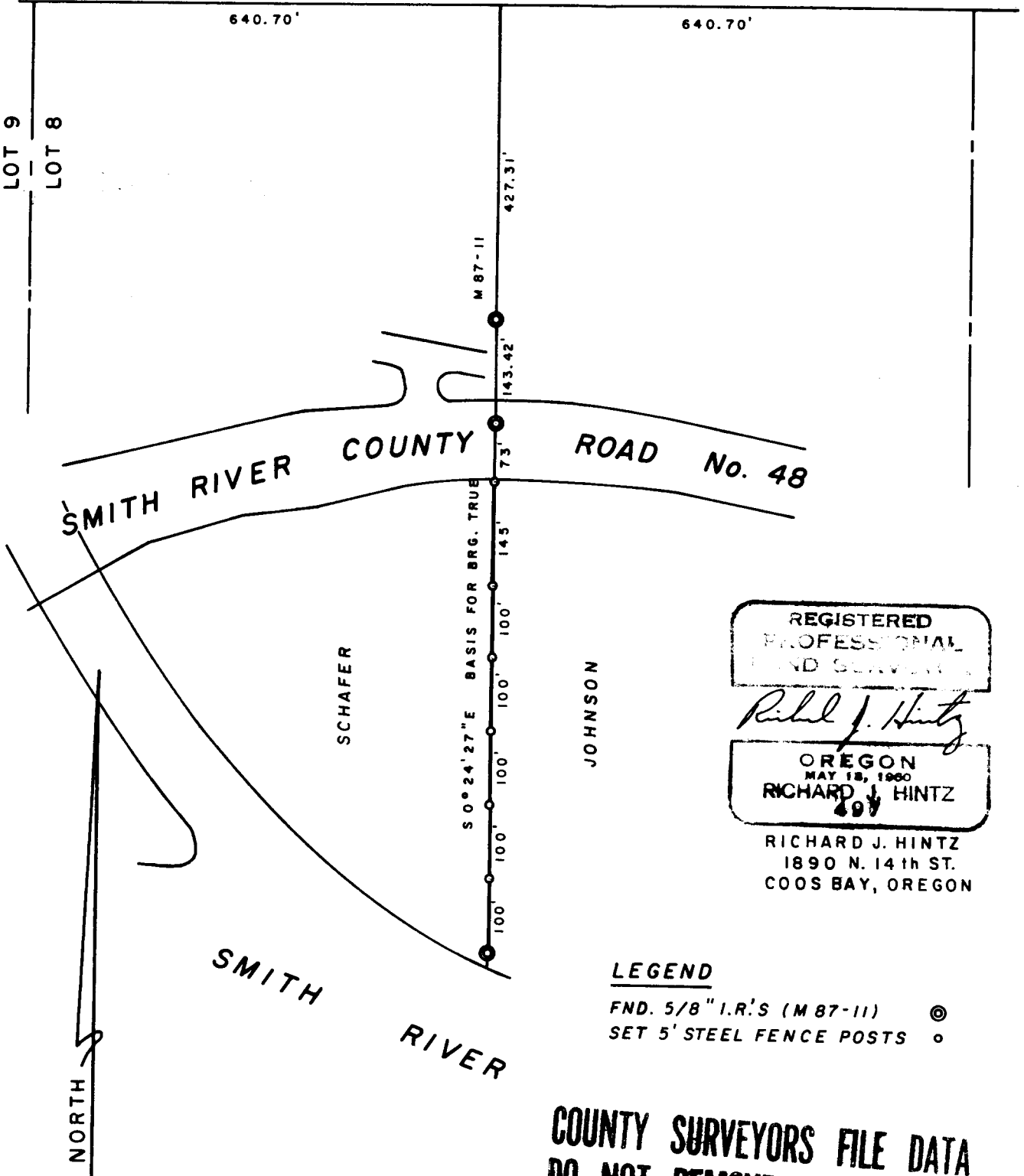
JL
AUG 3 1987 TF

COUNTY SURVEYOR
DOUGLAS COUNTY, ORE. TF

W 1/16

N 89° 35' 26" E

1/4 Cor.



REGISTERED
PROFESSIONAL
LAND SURVEYOR

Richard J. Hintz

OREGON
MAY 18, 1960
RICHARD J. HINTZ
497

RICHARD J. HINTZ
1890 N. 14th ST.
COOS BAY, OREGON

LEGEND

FND. 5/8" I.R.'S (M 87-11) ⊙
SET 5' STEEL FENCE POSTS ○

COUNTY SURVEYORS FILE DATA
DO NOT REMOVE FROM OFFICE

RECORD OF SURVEY
FOR
RAYMOND SCHAFAER

NW 1/4 SECTION 24
T 21 S, R 12 W
SCALE: 1" = 200'
JULY 1987

NARRATIVE

THE PURPOSE OF THIS SURVEY WAS TO MONUMENT THE LINE BETWEEN THE SMITH RIVER COUNTY ROAD AND THE TOP OF THE DIKE. THE SURVEY WAS PERFORMED BY OCCUPYING MY MONUMENT FROM A PREVIOUS SURVEY (M 87-11) ON THE COUNTY ROAD AND SIGHTING THE MONUMENT ON THE DIKE. METAL FENCE POSTS WERE THEN SET ON LINE FROM THE DIKE NORTH TO THE COUNTY ROAD.