

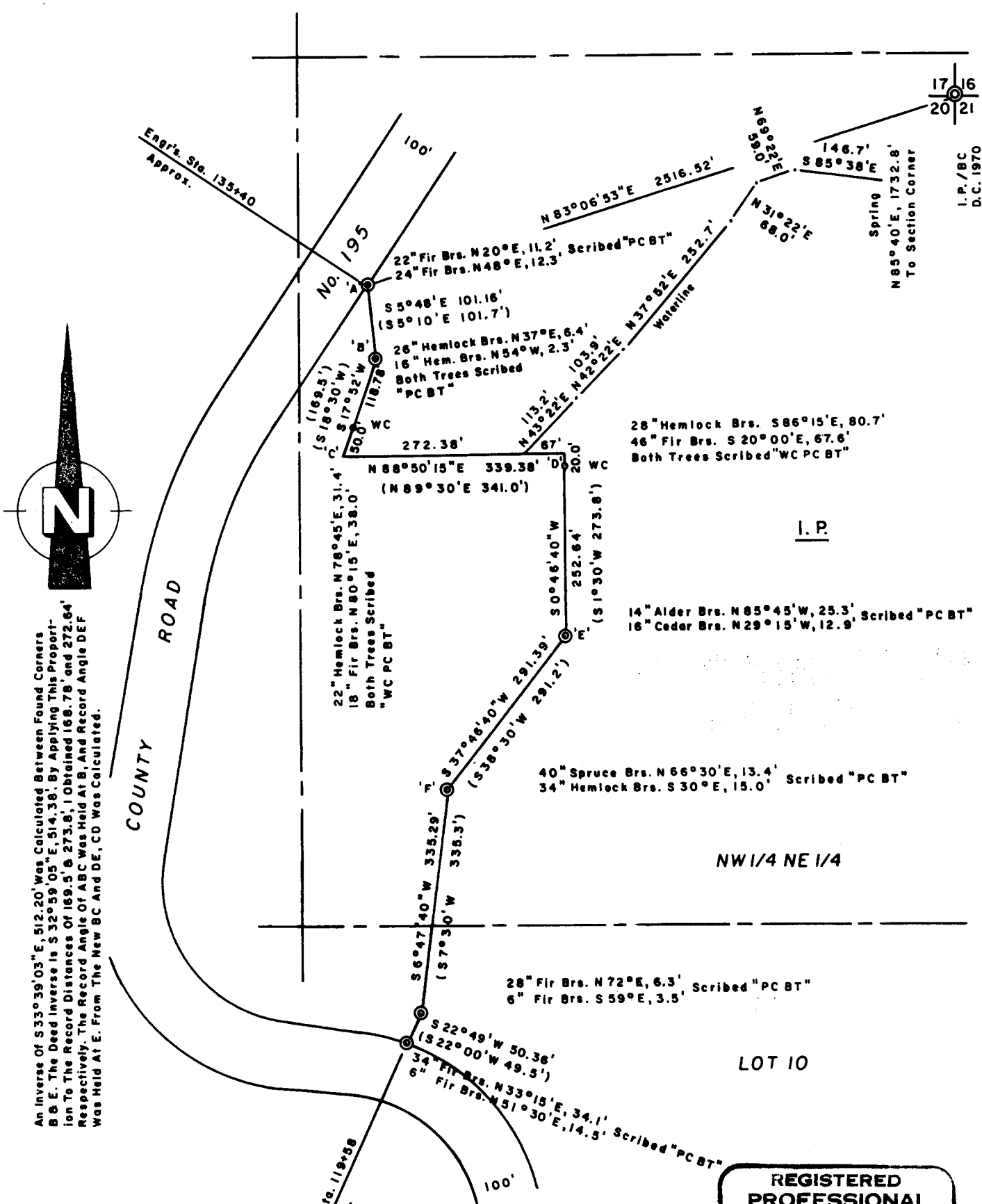
PROPERTY SURVEY  
FOR  
INTERNATIONAL PAPER CO.

NE 1/4 SEC. 20, T 21 S, R 11 W  
NOV. 1984 SCALE 1" = 200'

FILED *BS*  
RECEIVED *fk*

NOV 14 1984

COUNTY SURVEYOR  
DOUGLAS COUNTY, ORE.  
*BS*



An Inverse Of  $S33^{\circ}39'03''E, 512.20'$  Was Calculated Between Found Corners B & E. The Dead Inverse Is  $S32^{\circ}59'05''E, 514.38'$ . By Applying This Property To The Record Distances Of  $169.5'$  &  $273.8'$ , I Obtained  $168.78'$  and  $272.64'$  Respectively. The Record Angle Of ABC Was Held At B, And Record Angle DEF Was Held At E. From The New BC And DE, CD Was Calculated.

DISTANCES ARE TAKEN TO A 50d. NL. IN THE CENTER OF EACH BEARING TREE  
(DEED BRG. & DISTANCE) INST. 282622  
BASIS FOR BRG. TRUE FROM SOLAR OBSERVATION  
FOUND 3/4" I.P.'S SET BY INTERNATIONAL PAPER CO. ©  
CREW, 6-16-60. SET 11/4 x 36" I.P.'S / BRASS CAPS (PLS 497)  
OVER THE FOUND I.P.'S.  
SET 11/4 x 36" I.P.'S / BRASS CAPS (PLS 497) ○

REGISTERED  
PROFESSIONAL  
LAND SURVEYOR  
*Richard J. Hintz*  
OREGON  
MAY 13, 1960  
RICHARD J. HINTZ  
497  
RICHARD J. HINTZ  
1890 N. 14th ST.  
COOS BAY, OREGON