

M 101-51

FILED



APR 28 1989

NARRATIVE TO ACCOMPANY
SURVEY FOR
DOUGLAS COUNTY LAND DEPARTMENT
IN SOUTH $\frac{1}{2}$ OF SECTION 1, T20S, R12W, W.M.
MARCH 1989

COUNTY SURVEYOR
DOUGLAS COUNTY, ORE.

The purpose of this survey was to define the boundaries of Douglas County Land Department property (Lot 4 of Section 1, less exceptions) and of Douglas County Parks Department property (Lot 5 of Section 1, less exceptions).

Basis of bearing was the south line of Section 1 as shown on Surveys RM 1-47 and M 88-13.

From Survey M 88-13, three monuments (corners 1,2,&3) shown by RM 1-47 to be on the county line were tied. Also from Survey M 88-13, monuments shown as set at the CW 1/16, CEW 1/64, C 1/4 and a point on the north line of Lot 3 were tied. Also from Survey M 88-13, monuments at the SW corner of Section 1, the south 1/4 corner of Section 1 and the W 1/16 corner between Sections 1 and 12 were tied.

All monuments tied from Survey M 88-13 agreed with that map except the C 1/4 and the CW 1/16 which apparently were set in error. I set a new monument at the C 1/4 by proportioning between the CEW 1/64 and the monument found on the north line of Lot 3 (corner #8), using M 88-13 as record. I set a new monument at the CW 1/16 at bearing and distance from the CEW 1/64 as per M 88-13.

Holding the bearing from the CEW 1/64 as per M 88-13, I intersected the County Line with the easterly right-of-way line of the Southern Pacific Railroad (corner #4). The bearing of the railroad was determined by found monuments to the south. The intersection was made on a spiral curve as per the S.P.R.R. maps. Stationing of the R.R.E.C. was determined from those same S.P.R.R. maps which showed stationing on the monuments found to the south.

The boundary between Lot 4 and Lot 5 was determined by inverting between the CW 1/16 and the W 1/16 corners between Sections 1 and 12. An intersection was made with the line connecting found monuments to determine the SE corner of the Parks Department property.

The boundary between Lot 3 and Lot 4 was determined by inverting between the C 1/4 and the S 1/4 corners. Tax Lot No. 1600 was monumented according to Deed Recorder's No. 77-19542. A monument was set at the intersection of the line between Lots 3 and 4 with the north line of Tax Lot No. 1600.

The locations for Tax Lots 1400 and 1500 according to Deed Records 72-11045 and 83-03699 did not fit occupancy. Using parcel dimensions from those records, new descriptions were determined as shown and the Douglas County Land Department is pursuing the matter with the private owners of those Tax Lots.

C.S. File No. 62/64

FILED

z/h

APR 28 1989

COUNTY SURVEYOR
DOUGLAS COUNTY, ORE.

Tax Lot No. 300 was monumented using found monuments and Deed Recorder's No. 79-11382. Adjustments to some dimensions were made to insure Tax Lot No. 300 had at least its full acreage.

Attached are numbered Corner Reports showing additional information not detailed on the map.

Field equipment included a Kern DKM2-AE Theodolite, a Leitz Red-1 Distance Measuring Device, and steel tapes. Field personnel included Randall Smith, Stephen Flause, Terrie Franssen, and Linda Rigutto. Office personnel included Hilary Simmons, Randall Smith, Stephen Flause, Linda Rigutto, Larry Monrean, and Francis Ingram.

REGISTERED
PROFESSIONAL
LAND SURVEYOR

Francis L. Ingram

OREGON
JULY 11, 1969
FRANCIS L. INGRAM
902

C.S. File No. 62/64

CORNER #1

GOVERNMENT CORNER RESTORATION FORM

FILED

Township 205 Range 12W Sec. 1 County DOUGLAS

State OREGON Date JUNE 20, 1988 No. _____

APR 28 1989

Corner Designation

OLD MOST WESTERLY COUNTYLINE MARKER
E-W CENTERLINE OF SEC. 1
ACCORDING TO RMI-47

COUNTY SURVEYOR
DOUGLAS COUNTY, ORE.

- Condition Report Only
- Not Found
- Renewed
- Unrecorded
- Surveyed In
- Referenced Out

Previous Renewals NONE

MONUMENT DETAIL

Monument(s) Found: (Condition and Source)

A 2 1/2 INCH BRASS CAP (MARKED AS AT RIGHT) ON A 1 1/2 INCH O.D. IRON PIPE FIRMLY SET AND PROTRUDING APPROXIMATELY 6 INCHES ABOVE GROUND.

MONUMENT SET BY MILO GODFREY IN SURVEY FILED AT DCSSO AS RMI-47

DOUGLAS COUNTY SURVEYORS OFFICE

LANE COUNTY

DOUGLAS COUNTY

1964

Accessories Found:

A 6x6 INCH WOODEN COUNTY LINE MARKER POST PROTRUDING APPROXIMATELY 7 FEET FROM GROUND WITH NW SIDE LETTERED "LANE COUNTY" AND SW SIDE LETTERED "DOUGLAS COUNTY" BEARS S66°W, 0.2 FEET. A 7 INCH DIAM. 3 INCH TALL STUB OF A POWER POLE (MARKED "STDS -60 SPEC 8 7 25" ON CUT DOWN PORTION) BEARS N3°E, 48.5 FEET DISTANT (RECORD N3°W, 48.5 FT.)

RENEWAL

Monument Set (Procedure and Description)

Monument Detail

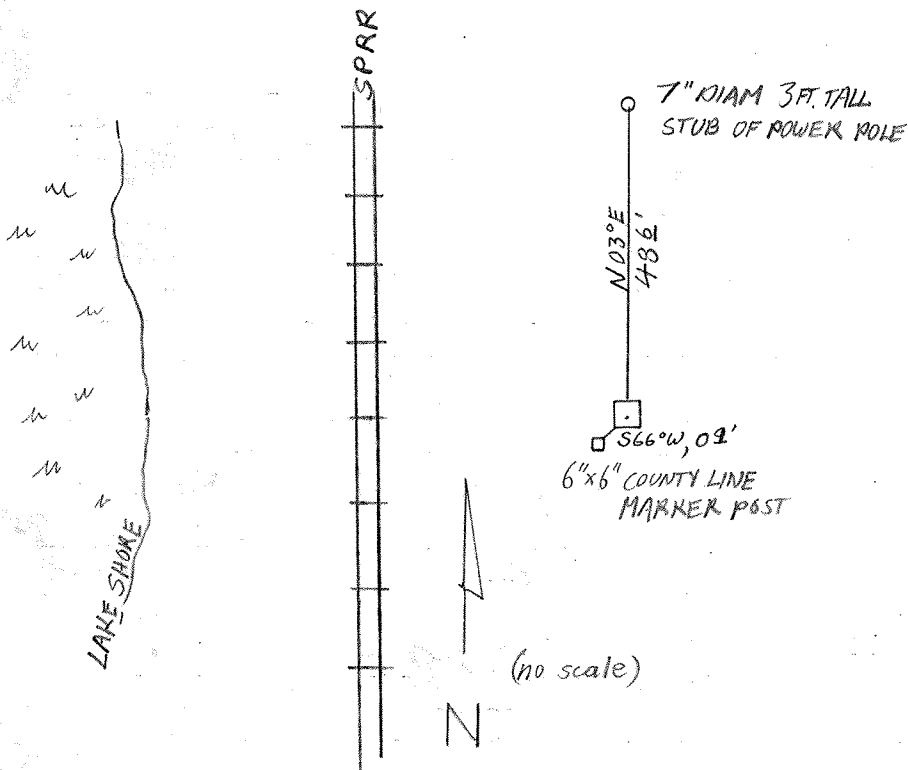
A LATER SURVEY AND BLM OPINION SHOW THIS MONUMENT TO BE IN ERROR. TO SAVE CONFUSION WE REMOVE BRASS CAP FROM PIPE AND PLACE A 1/4 INCH DIAMETER PLASTIC CAP MARKED "DOUG. CO. SURVEYOR" IN TOP OF PIPE.

NA

New Accessories

NONE

Sketch of Monument, Accessories, and General Area



Location & Comments

JUST NORTH OF ADA RESORT ALONG SP RAILROAD TRACKS

Comp. Declin. 1982E
 Agency DLCSO
 Party Chief RANDALL W SMITH
 Notekeeper [Signature]
 Witnesses STEPHEN J FLOUSE

Address

Surveyor's Seal
 REGISTERED
 PROFESSIONAL
 LAND SURVEYOR

[Signature]

OREGON
 JULY 13, 1979
 LARRY E. MONREAN
 #1830

CORNER #2

GOVERNMENT CORNER RESTORATION FORM

FILED

Township 20S Range 12W Sec. 1 County DOUGLAS

State OR Date 6/20/88 No. _____

APR 28 1989

Corner Designation

COUNTY SURVEYOR
DOUGLAS COUNTY, OREGON

OLD COUNTY LINE
MARKER
ALONG EAST SIDE
OF COUNTY ROAD
According
to RML-47

- Condition Report Only
- Not Found
- Renewed
- Unrecorded
- Surveyed In
- Referenced Out

Previous Renewals NONE

MONUMENT DETAIL

Monument(s) Found: (Condition and Source)

A 2 1/2" DIA. DCSO BRASS CAP ON A
1 1/4" O.D. IRON PIPE PROTRUDING
6 IN ABOVE GROUND SET IN
MILD GODFREY SURVEY (CRM 1-47)

DOUG COUNTY SURVEYORS OFFICE

LANE
COUNTY

DOUGLAS
COUNTY

1964

Accessories Found:

A 9" NOW A 17" DBH DOUG. FIR WITH A FULLY HEALED DOUBLE BLAZE
BEARS S13°W, 15⁸ FT (RECORD S13°E, 15⁸ FT).

A 32" NOW A 41" D.B.H. DOUG. FIR WITH A FULLY HEALED SINGLE BLAZE
BEARS N 74°E, 19² FT (RECORD N 74°W, 19⁰')

RENEWAL

Monument Set (Procedure and Description)

Monument Detail

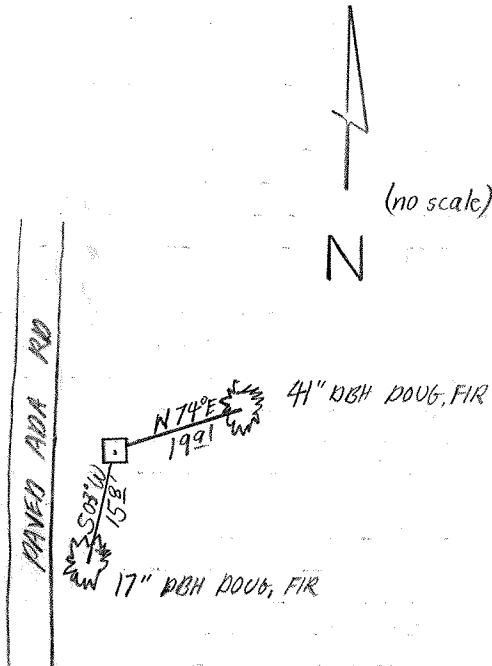
BRASS CAP ON DC SO 1964 BC/HP.
 IS SAILED OFF, REMAINING I.P. LEFT
 IN PLACE AND A PLASTIC CAP MARKED "DOUG. CO. SURVEYOR"
 IS SET IN TOP OF PIPE.
 1964 DC SO SURVEY BY MILO E. GODFREY
 (RM1-47) SUPERSEDED IN 1981 BY PERRY
 G. FOX SURVEY (M88-13). BLM OPINION
 SHOW THIS MONUMENT TO BE IN ERROR. TO
 SAVE CONFUSION WE REMOVE CAP FROM
 PIPE. A COMPLETE REPORT WILL BE SUBMITTED
 TO THE BUREAU.

N/A

New Accessories

NONE

Sketch of Monument, Accessories, and General Area



Location & Comments

Comp. Declin. 18 1/2° E
 Agency DCSO
 Party Chief RANDALL W. SMITH
 Notekeeper Stephen John Flause
 Witnesses STEPHEN J. FLAUSE

Address

Surveyor's Seal

REGISTERED
 PROFESSIONAL
 LAND SURVEYOR

Larry E. Monrean

OREGON
 JULY 13, 1979
 LARRY E. MONREAN
 #1830

CORNER #3

(PASS 620640)

GOVERNMENT CORNER RESTORATION FORM

FILED

Township 20S Range 12W Sec. 1 County DOUGLAS

State OREGON Date JULY 26 1988 No. _____

APR 28 1989

Corner Designation

(GODFREY)

COUNTY SURVEYOR
DOUGLAS COUNTY, ORE

- Condition Report Only
- Not Found
- Renewed
- Unrecorded
- Surveyed In
- Referenced Out

MONUMENT DETAIL

OLD CW 1/16 ACCORDING TO RM 1-47

Previous Renewals NONE, SEE RM 1-47

Monument(s) Found: (Condition and Source)

20" NOW 26" DIA. SPRUCE WITH
FULLY HEALED SINGLE BLAZES ON THE
NORTH, SOUTH AND EAST SIDES OF TREE
(PER GODFREY SURVEY RM 1-47)

N/A

Accessories Found:

PER RM 1-47

20" NOW 29" DIA. SPRUCE WITH A FULLY HEALED SINGLE BLAZE
BEARS S1°W, 13.0 FT (REC. S1°E, 13.0 FT).

18" NOW 23" DIA. SPRUCE WITH A PARTIALLY HEALED DOUBLE BLAZE,
NO SCRIBING VISIBLE, BEARS N64°W, 37.5 FT (REC. N64°E,
37.5 FT).

RENEWAL

Monument Set (Procedure and Description)

Monument Detail

NONE

N/A

New Accessories

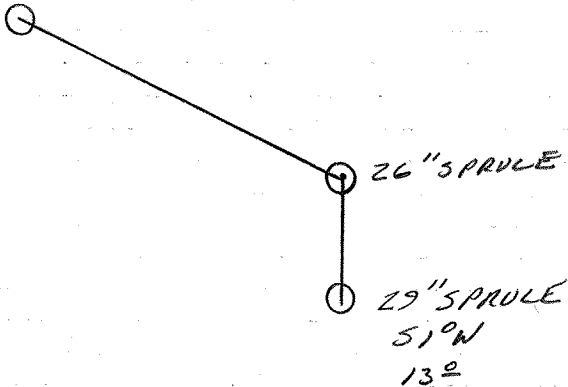
NONE

Sketch of Monument, Accessories, and General Area

Location & Comments

○ PER RM1-47

23" SPROLE N64°W, 375



Comp. Declin. 18 1/2° E
 Agency DCSO
 Party Chief RANDALL W. SMITH
 Notekeeper Randall W. Smith
 Witnesses STEPHEN J. FLAISE

Address

Surveyor's Seal

REGISTERED
 PROFESSIONAL
 LAND SURVEYOR

Larry E. Monrean

OREGON
 JULY 13, 1979
 LARRY E. MONREAN
 #1830

RENEWAL

Monument Set (Procedure and Description)

Monument Detail

A 2 3/8" DIAM. BRASS CAP MARKED AS AT RIGHT ON A 1 3/8" NO. X 32" LONG GALVANIZED IRON PIPE IS FIRMLY SET PROTRUDING APPROX. 5" ABOVE GROUND.

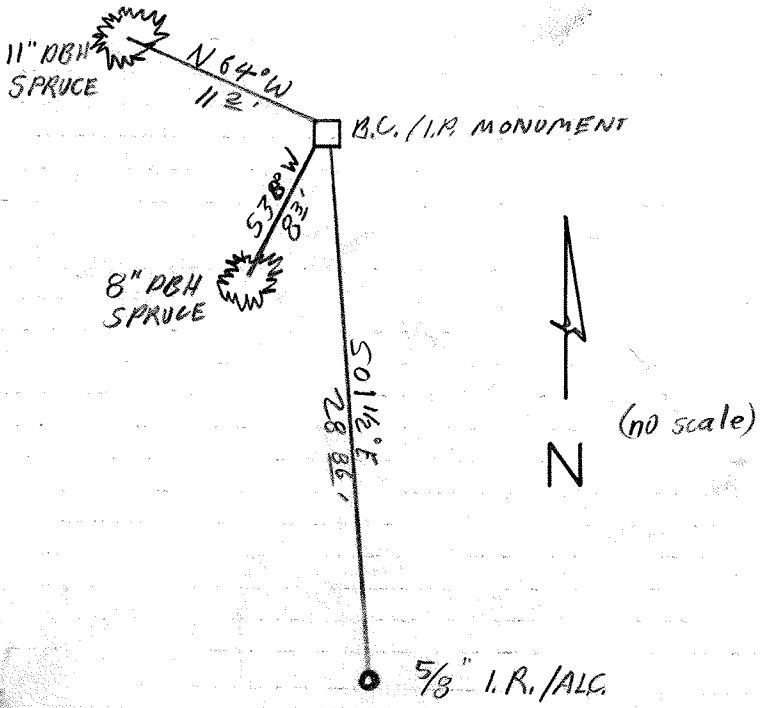
DOUGLAS COUNTY SURVEYORS

T 20 S
R 12 W
C ————— C
S 1
1989
OFFICE

New Accessories

- 11" DBH SPRUCE D. BLAZED "S1 CS BT" BEARS N 64° W , 11 1/2 FT.
- 8" DBH SPRUCE D. BLAZED "S1 CS BT" BEARS S 38° W , 8 3/4 FT.
- 5/8" I.R./ALC. S 1 1/2° E , 28 86 FT.

Sketch of Monument, Accessories, and General Area



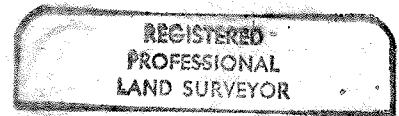
Location & Comments

MONUMENT IS LOCATED ON TIMBERED BENCH BETWEEN ADA PARK ROAD AND SPRR TRACKS. MONUMENT LIES NEARER RAILROAD TRACKS

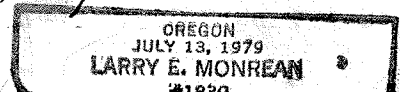
Comp. Declin. 18 1/2° E
 Agency DCSO
 Party Chief R.W. SMITH
 Notekeeper S.J. FLAISE
 Witnesses Stephen John Flaise

Address

Surveyor's Seal



Larry E. Monrean



RENEWAL

NEW DCSO B4IP SET

Monument Set (Procedure and Description)

Monument Detail

DOUGLAS COUNTY SURVEYORS

N 1/16

C ————— C
S1
1989
OFFICE

A 2 1/2" DIA. DCSO BRASS CAP ON A 1 3/8" O.D. BY 32" LONG IRON PIPE, PROTRUDES 6" ABOVE GROUND

New Accessories

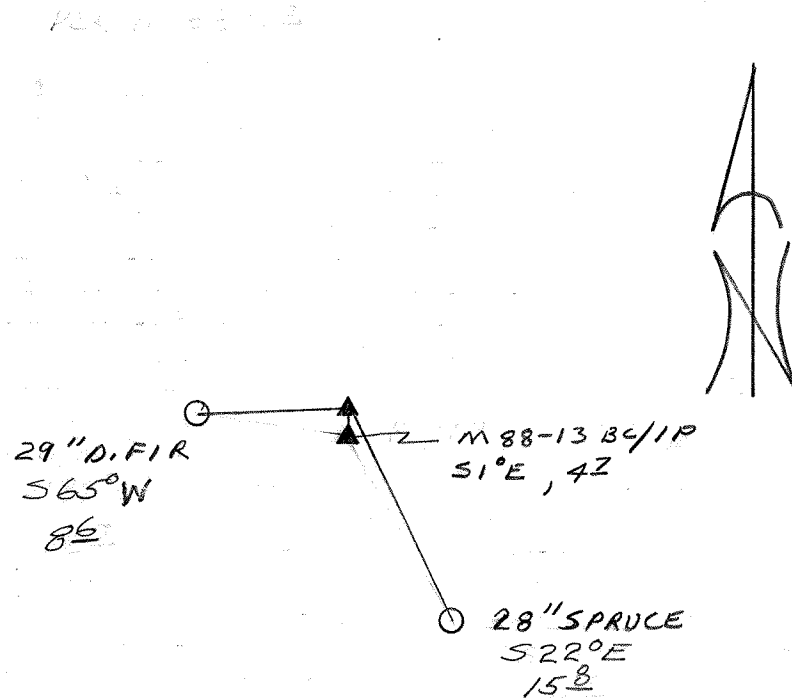
29" DIA. D. FIR WITH AN AXED "X" UPPER BLAZE AND PARTIALLY HEALED LOWER BLAZE WITH ILLEGIBLE SCRIBING VISIBLE, BEARS S 65° W, 8.6 FT BT PER M 88-13 (BLAZE FACES S 82° E).

28" DIA. SPRUCE WITH AN AXED "X" UPPER BLAZE AND PARTIALLY HEALED LOWER BLAZE, NO SCRIBING VISIBLE, BEARS S 22° E, 15.8 FT, BT PER M 88-13

1981 2 1/2" BRASS CAP / IRON PIPE BEARS S 1° E, 4.7 FT.

Sketch of Monument, Accessories, and General Area

Location & Comments



Comp. Declin. 18 1/2° E
Agency DCSO
Party Chief RANDALL W. SMITH
Notekeeper Randall W. Smith
Witnesses STEPHEN J. FLAISE

Address

Surveyor's Seal

REGISTERED
PROFESSIONAL
LAND SURVEYOR

Jerry E. Monrean

OREGON
JULY 13, 1979
LARRY E. MONREAN
#1830

CORNER #6

PLSS 630640

GOVERNMENT CORNER RESTORATION FORM

FILED

Township 20S Range 12W Sec. 1 County DOUGLAS

State OR Date JULY 26, 1988 No. _____

APR 28 1989

Corner Designation

CEW 1/64

COUNTY SURVEYOR
DOUGLAS COUNTY, ORE.

- Condition Report Only
- Not Found
- Renewed
- Unrecorded
- Surveyed In
- Referenced Out

Previous Renewals M 88-13

Monument(s) Found: (Condition and Source)

A 2 1/2" DIA. BRASS CAP ON A 2 1/4"
P.D. I.P. PROTRUDES 8 IN. ABOVE
GROUND

MONUMENT DETAIL

PLS 1457

EW 1/64

C _____ C
1981

Accessories Found:

PER M 88-13
25" NOW 29" DIA. D. FIR WITH AN AXED "X" IN BARK AND A
PARTIALLY HEALED LOWER BLAZE, ILLEGIBLE SCRIBE MARKS
VISIBLE BEARS S 63° W, 27.5 FT. (AGREES WITH RECORD).

9" NOW 11" DIA. SPRUCE WITH AN AXED "X" IN BARK AND A
PARTIALLY HEALED LOWER BLAZE, ILLEGIBLE SCRIBE MARKS
VISIBLE BEARS N 11° E, 24.2 FT. (AGREES WITH RECORD).

RENEWAL

Monument Set (Procedure and Description)

NONE

Monument Detail

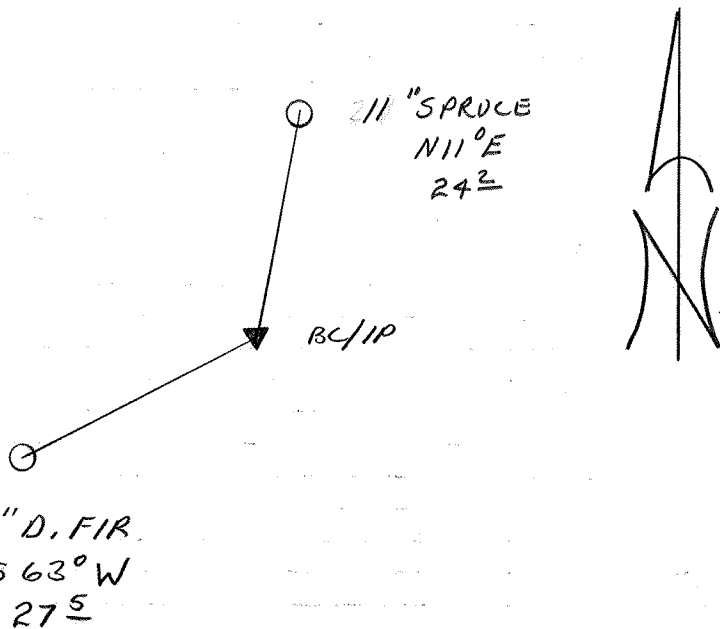
N/A

New Accessories

NONE

Sketch of Monument, Accessories, and General Area

Location & Comments



Comp. Declin. 10 1/2° E
 Agency DCSO
 Party Chief RANDALL W SMITH
 Notekeeper Randall W Smith
 Witnesses STEPHEN J FLAISE

Address

Surveyor's Seal

REGISTERED
 PROFESSIONAL
 LAND SURVEYOR

Larry E. Monrean

OREGON
 JULY 13, 1979
 LARRY E. MONREAN
 #1830

Monument Set (Procedure and Description)

Monument Detail

A 2 3/8" DIA. DCSO BRASS CAP ON A 1 3/8" O.D. BY 42" LONG IRON PIPE PROTRUDING 6" ABOVE GROUND.

DOUGLAS COUNTY SURVEYORS

T 20S R 12W

CY 4 S 1

1989

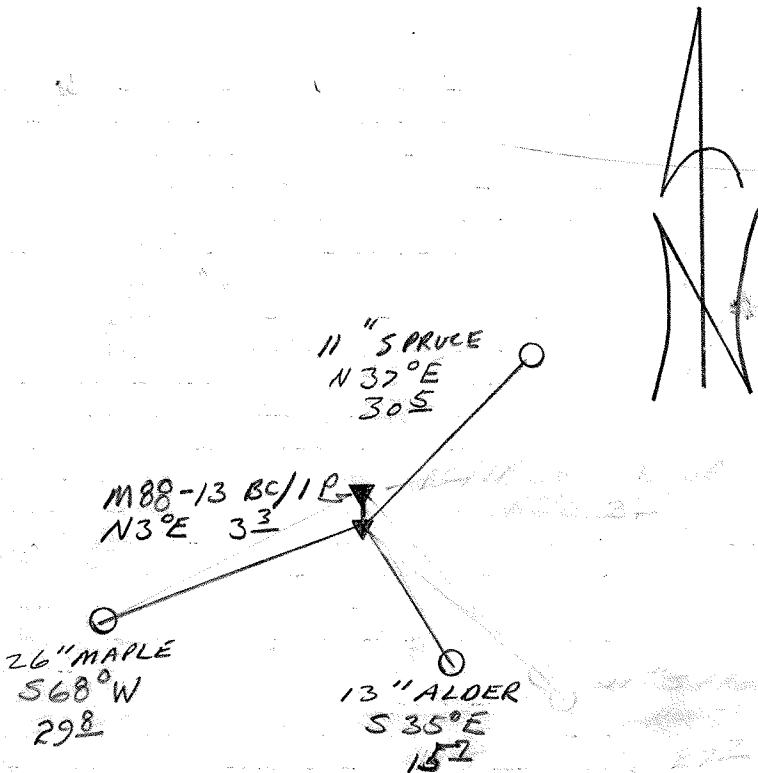
OFFICE

New Accessories

26" DIA. MAPLE WITH A POSSIBLE FULLY HEALED BLAZE BEARS S 68° W, 29.8 FT
 13" DIA. ALDER WITH BARK SCRIBING "CY 4 BT S 1" BEARS S 35° E, 15.7 FT
 11" DIA. DOUBLE TRUNKED SPRUCE, A FULLY HEALED BLAZE IS ON DISTAL BUTT SOUTH TRUNK. CENTER OF ROOT CROWN BEARS N 37° E, 30.5 FT
 1991 2 7/8" BRASS CAP/IRON PIPE, BEARS N 3° E, 3.3 FT

Sketch of Monument, Accessories, and General Area

Location & Comments



Comp. Declin. 18 1/2° E
 Agency DCSO
 Party Chief RANDALL W SMITH
 Notekeeper Randall W Smith
 Witnesses STEPHEN J FLAISE

Address _____

Surveyor's Seal

REGISTERED
 PROFESSIONAL
 LAND SURVEYOR

Jimmy Timon

OREGON
 JULY 13, 1979
 LARRY E. MONREAM
 #1830

CORNER #8

GOVERNMENT CORNER RESTORATION FORM

FILED

Township 20S Range 12W Sec. 1 County DOUGLAS

State OREGON Date SEPT. 88 No. _____

APR 28 1989

Corner Designation

NW CORNER DEED ON E-W CENTERLINE
SECTION 1 PER M 88-13 DOUG. CO.
SURVEY RECORDS JUNE 1981 SURVEY BY FOX

COUNTY SURVEYOR

DOUGLAS COUNTY, ORE.
Condition Report Only

- Not Found
- Renewed
- Unrecorded
- Surveyed In
- Referenced Out

Previous Renewals NONE

MONUMENT DETAIL

Monument(s) Found: (Condition and Source)

A 2 1/2 INCH DIAMETER BRASS CAP
(MARKED AS AT RIGHT) ON A 1 1/2 INCH O.D.
IRON PIPE FIRMLY SET AND PROTRUDING
APPROXIMATELY 9 INCHES ABOVE GROUND
(FROM SURVEY M 88-13 AS FILED IN THE
DOUGLAS COUNTY SURVEY RECORDS).

PLS 1457

3

1981

ON N.W. EDGE OF B.C. MONUMENT
A 1 INCH I.D. IRON PIPE PROTRUDES 39 INCHES
ABOVE GROUND. (NO RECORD)

Accessories Found:

TWO BEARING TREES RECORDED FROM SURVEY M 88-13, AS FILED IN THE
DOUGLAS COUNTY SURVEY RECORDS, ARE FOUND.
A 16" SPRUCE NOW A 16 INCH D.B.H. SPRUCE, BARK BLAZED "X" AND BARK
SCRIBED "BT" BEARS S 39° W, 20' FEET DISTANT TO CENTER OF ROOT CROWN
OF PISTOL BUTT BASE (AS PER RECORD). A 36" SPRUCE NOW A 38 INCH
D.B.H. SPRUCE WITH A BARK BLAZED "X" AND A PARTIALLY HEALED
PITCHED OVER LOWER BLAZE WITH NO SCRIBING VISIBLE BEARS N 24° E, 23'
FEET DISTANT (AS PER RECORD).

Corner #9 in CS 62/64

GOVERNMENT CORNER RESTORATION FORM

Township 20S Range 12W Sec. 1

County DOUGLAS

State OR

Date 8/16/88

No. _____

OCT 11 1988

COUNTY SURVEYOR
DOUGLAS COUNTY, ORE

Corner Designation

S2 | S1
S11 | S12

- Condition Report Only
- Not Found
- Renewed
- Unrecorded
- Surveyed In
- Referenced Out

Previous Renewals 1905 GLO RESURVEY, #57, #3, 1982 BLM D. RESURVEY

MONUMENT DETAIL

Monument(s) Found: (Condition and Source)

3/4" ALUMINUM CAP ON A 2 1/2" O.D. ALUMINUM PIPE, PROTRUDES 5 IN. ABOVE GROUND. (PER 1982 D. RESURVEY) A 1/2" I.D. IRON PIPE WAS FOUND 5 IN. BELOW GROUND ALONG WEST EDGE OF ALUMINUM CAP AND PIPE. (PER REN #57), THIS APPARENTLY IS THE POSITION COMMONLY ACCEPTED AS THE CORNER LOCATION.

US DEPARTMENT OF THE INTERIOR

T20S R12W

S2 | S1
S11 | S12

1982

BUR. OF LAND MANAGEMENT

Accessories Found:

" A 084 "

10" DIA. POWER POLE NO. 4 WITH SCRIBE MARKS "SIRE 4079 BP" BEARS N24°E, 25.0 FT (AGREES WITH REN #3) PER REN #3.

10" NOW 6" DIA. 5 FT HIGH ROTTED SPRUCE SNAG, NO SCRIBING VISIBLE, BEARS S41°E, 39.6 FT (AGREES WITH 1982 BLM'S RECORD) PER REN #3.

20" NOW 12" DIA. 3 FT HIGH ROTTED SPRUCE STUMP, SCRIBE MARKS VISIBLE "79 BT" BEARS S5°W, 69.0 FT (1982 BLM'S REC. S5°W, 69.9 FT) PER REN #3.

48" NOW 60" DIA. SPRUCE WITH A PARTIALLY HEALED SINGLE BLAZE, SCRIBE MARKS VISIBLE "SIRE 4079", BEARS N88°W, 132.2 FT (AGREES WITH REN #3) PER REN #3.

8" NOW 14" DIA. SPRUCE WITH A FULLY HEALED SINGLE BLAZE BEARS S7°E, 60.1 FT, (AGREES WITH REC.) 1982 BLM D. RESURVEY

7 1/2" NOW 12" DIA. SPRUCE WITH A PARTIALLY HEALED SINGLE BLAZE, ILLEGIBLE SCRIBE MARKS VISIBLE, BEARS S4°W, 51.1 FT (AGREES WITH REC.) PER 1982 BLM RESURVEY.

NO ORIGINAL BT'S OR BT'S FROM GLO: 1905 RESURVEY FOUND.

1/2" I.D. IRON PIPE FIRMLY SET AND PROTRUDING 10 IN. ABOVE GROUND, BEARS S31 3/4°E, 19.7 FT (SEE RENEWAL RECORDS IN C.S. FILE NO 62/91)

1149

CS 62/59-1 12/10/11

RENEWAL

Monument Set (Procedure and Description) NONE

Monument Detail

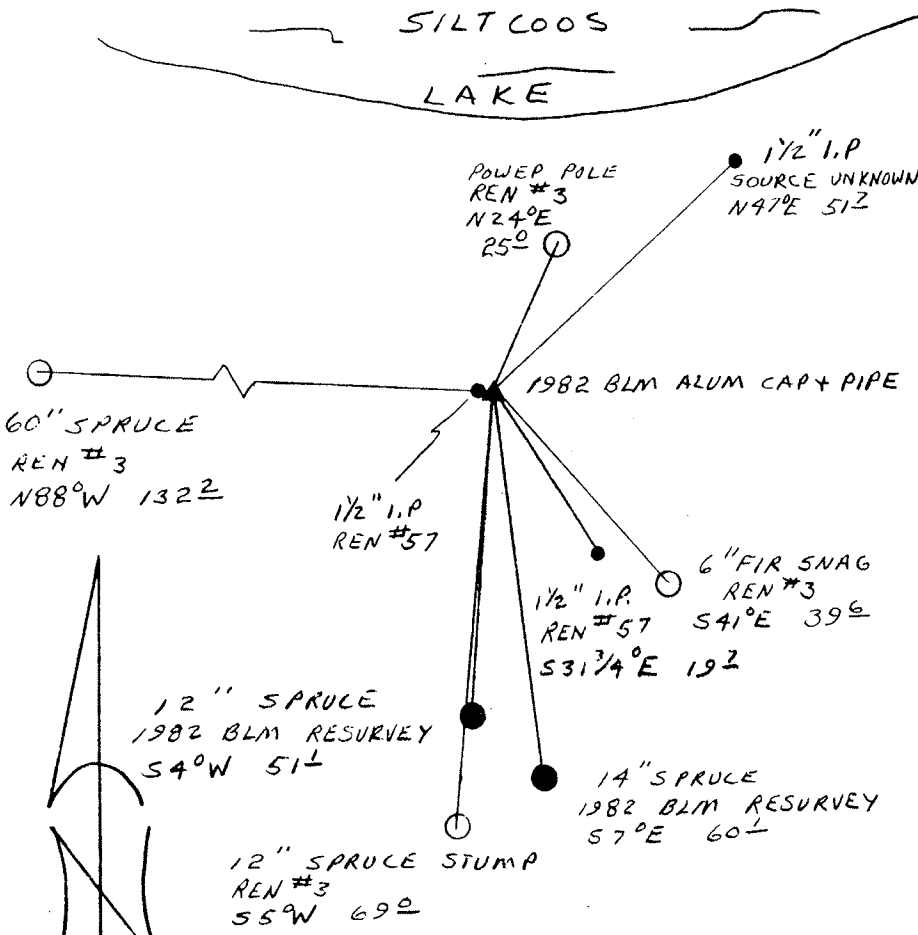
ACCESSORIES FOUND:
A LOOSLY SET 1 1/2 IN. I.D. IRON PIPE
PROTRUDING 1" ABOVE GROUND BEARS N 47° E,
51.7 FT (SOURCE UNKNOWN).

N/A

New Accessories

NONE

Sketch of Monument, Accessories, and General Area



Location & Comments

MONUMENT LIES APPROX. 100 FT SOUTH
OF SOUTH LAKE SHORE OF SILT COOS
LAKE, NEAR A COVE WHICH IS THE
FIRST COVE WEST OF THE SOUTH
END OF RAILROAD BRIDGE AT MOUTH
OF FIDDLE CREEK ARM

Comp. Declin. 18 1/2° E
Agency DLSO
Party Chief RANDALL W SMITH
Notekeeper Randall W Smith
Witnesses STEPHEN J FLAUSE

Address

Surveyor's Seal

REGISTERED
PROFESSIONAL
LAND SURVEYOR

Larry E. Monrean

OREGON
JULY 13, 1979
LARRY E. MONREAN
#1830

CORNER # 10

PLSS 620 600

GOVERNMENT CORNER RESTORATION FORM

FILED

Township 20S Range 12W Sec. 1 County DOUGLAS

State OR Date JULY 25, 1988 No. _____

APR 28 1989

Corner Designation

COUNTY SURVEYOR
DOUGLAS COUNTY, ORE.

W 1/16 S1
S12

- Condition Report Only
- Not Found
- Renewed
- Unrecorded
- Surveyed In
- Referenced Out

Previous Renewals M88-13

MONUMENT DETAIL

Monument(s) Found: (Condition and Source)

2 1/2" DIA. BRASS CAP ON A 2 1/4" O.D. IRON PIPE, PROTRUDES 13 IN. ABOVE GROUND.

PLS 1457

W 1/16 S1
S12

1981

Accessories Found:

23" NOW 32" DIA. HEMLOCK WITH AN AXED "X" IN BARK, AND A PARTIALLY HEALED LOWER BLAZE SCRIBE VISIBLE " 1/16 BT" BEARS N77°W, 37.3 FT. (AGREES WITH RECORD) PER M88-13

12" NOW 17" DIA. SPRUCE WITH A PARTIALLY HEALED DOUBLE BLAZE, ILLEGIBLE SCRIBED MARKS SEEN IN LOWER BLAZE, BEARS S30°W, 46.2 FT (AGREES WITH RECORD) PER M88-13

RENEWAL

Monument Set (Procedure and Description)

Monument Detail

NONE

N/A

New Accessories

NONE

Sketch of Monument, Accessories, and General Area

Location & Comments

SILT COOS LAKE

CORNER LIES IN SWAMPY AREA ADJACENT TO SMALL INLET ON SOUTH SIDE OF FIDDLE CREEK ARM OF SILT COOS LAKE.

Comp. Declin. 18 1/2° E
Agency DCSO
Party Chief RANDALL W SMITH
Notekeeper STEPHEN J FLAUSE
Witnesses _____

Address _____

Surveyor's Seal

REGISTERED
PROFESSIONAL
LAND SURVEYOR

Larry E. Monrean

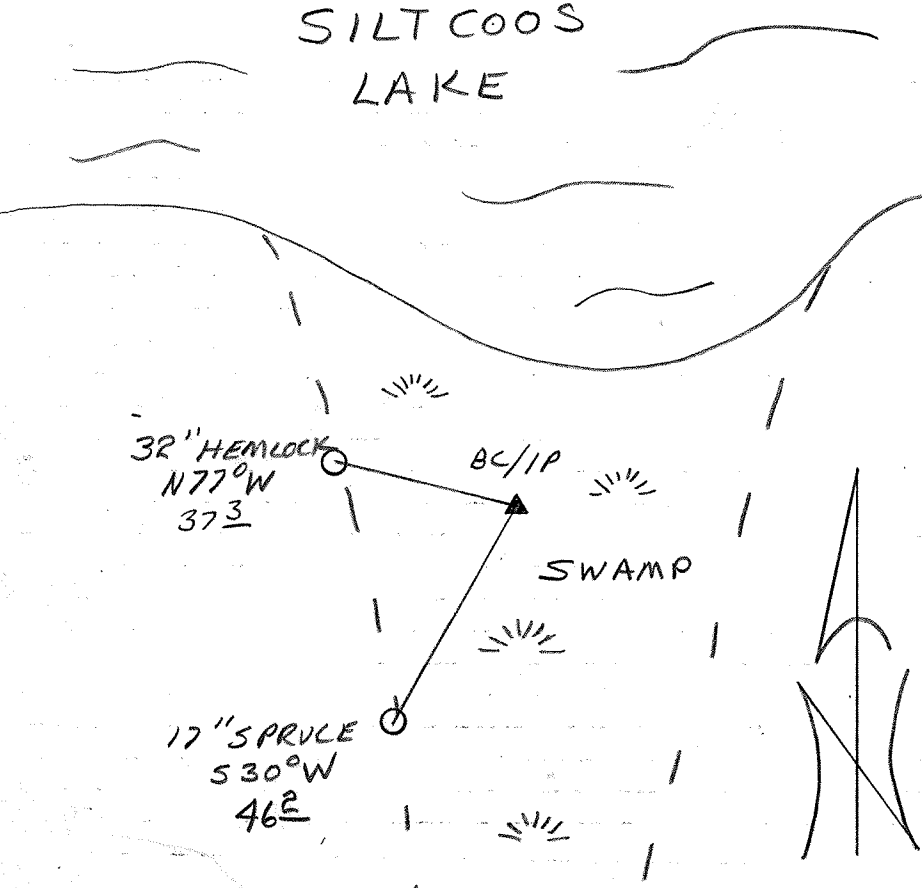
OREGON
JULY 13, 1979
LARRY E. MONREAN
#1830

32" HEMLOCK
N77°W
373

BC/IP

SWAMP

17" SPRUCE
S30°W
462



RC

CORNER # 11

PLS 640600

GOVERNMENT CORNER RESTORATION FORM

FILED

JR

Township 20S Range 12W Sec. 1 County DOUGLAS

APR 28 1989

State OR Date JULY 25, 1988 No. _____

COUNTY SURVEYOR
DOUGLAS COUNTY, ORE.

Corner Designation

1/4 $\frac{S}{S} \frac{1}{12}$

- Condition Report Only
- Not Found
- Renewed
- Unrecorded
- Surveyed In
- Referenced Out

MONUMENT DETAIL

Previous Renewals #4, #27, M88-13

Monument(s) Found: (Condition and Source)

1/2" O.D. IRON PIPE WITH BRASS CAP
PROTRUDES 4 IN ABOVE GROUND.
PER REN #27

1/2" O.D. IRON PIPE PROTRUDES 15 IN
ABOVE GROUND PER REN #4
(DESCRIBED AS ACCESSORY FOUND; BELOW)

COUNTY SURVEYORS OFFICE

T 20S

1/4 $\frac{S}{S} \frac{1}{12}$

R 12W
1964

Accessories Found:

DIST. AND BRG'S TO BC/IP

36" NOW 43" DIA. 6 FT HIGH SPRUCE STUMP WITH A FULLY
HEALED DOUBLE BLAZE BEARS N72 1/2° W, 47.2 FT (AGREES
WITH REC. PER REN #27).

36" NOW 44" DIA. SPRUCE WITH A FULLY HEALED DOUBLE
BLAZE BEARS S63° E, 18.0 FT (AGREES WITH REC.
PER REN #27).

1/2" I.P. SET PER REN #4 AS 1/4 CORNER BEARS N87 1/4° E,
226.11 FT (AGREES WELL WITH M88-13 RECORD PER RM 1-47
APPARENTLY HAS A MIX UP IN BEARING (S87° 11' 40" E, 226.12 FT).

#116Xc

C.S. File No. 62/64

RENEWAL

Monument Set (Procedure and Description)

NONE

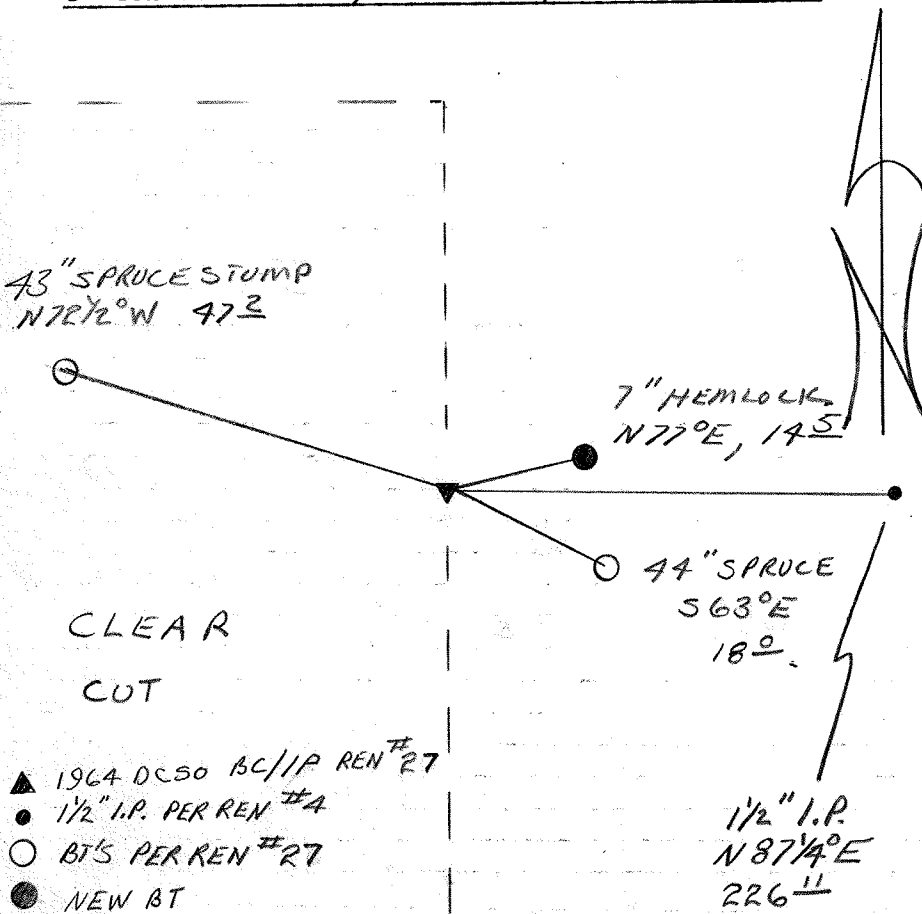
Monument Detail

N/A

New Accessories

7" HEMLOCK DOUBLE BLAZED AND SCRIBED "1/4 SICS BT"
BEARS N77°E, 14.5 FT.

Sketch of Monument, Accessories, and General Area



Location & Comments

ON VISIT TO CORNER AUG 18, 1988
NEW 7" HEMLOCK BT WAS
DESTROYED BY RECENT CAT
WORK, IT IS DOWN AND OUT OF
POSITION.

CORNER LIES AT THE EAST EDGE
OF A RECENTLY LOGGED CLEAR
CUT.

Comp. Declin. 18 1/2° E
Agency DCSO
Party Chief RANDALL W SMITH
Notekeeper Randall W Smith
Witnesses STEPHEN J FLAUSE

Address

Surveyor's Seal

REGISTERED
PROFESSIONAL
LAND SURVEYOR

Larry E. Monrean

OREGON
JULY 13, 1979
LARRY E. MONREAN
#1830



IN REPLY REFER TO:

United States Department of the Interior

9600 (942)

BUREAU OF LAND MANAGEMENT

OREGON STATE OFFICE
P.O. Box 2965 (825 NE Multnomah Street)
Portland, Oregon 97208

May 22, 1987

Mr. Ed Monrean
Douglas County Surveyors Office
Justice Building, Room 205
Roseburg, Oregon 97470

Dear Ed:

Earlier this month, you requested over the telephone the proper method of subdividing section 1, T. 20 S., R. 12 W., W.M., Oregon. This township was partially surveyed by Harvey Gordon in 1857, as shown on the plat approved September 6, 1858. Section 1 borders Lake Siltcoos and is fractional; Gordon surveyed the east, south, and north boundaries of the section.

Since Gordon established the north and south $\frac{1}{2}$ corners of section 1, the N.-S. center line would be run from $\frac{1}{2}$ corner to $\frac{1}{2}$ corner. The E.-W. center lines would be surveyed on mean bearings of the north and south boundaries. A weighted mean bearing would not be used because it results in only a minute and one half difference and this method is normally used where one boundary is considerably shorter than the other.

You also asked why the lots in the N $\frac{1}{2}$ NE $\frac{1}{2}$ had areas of 40.80 acres each. We cannot get these areas based on the plat distances, regardless of which subdivisional method is used. We also can't get the same areas on the lots bordering Lake Siltcoos in section 1. There are errors by the draftsman of the meander line, as shown on the 1858 plat as the E.-W. center lines intersect the meander line in different locations than as shown on the plat, particularly between Lots 6 and 7.

Sincerely,

William W. Glenn

William W. Glenn
Chief, Branch of Cadastral Survey

COPY

62/44
C.S. File No. 63/166

CS FILE FOLDER

CONTAINS

MORE

INFORMATION