

GOVERNMENT CORNER RESTORATION FORM

FILED

Township 30S Range 6W Sec. 10 County DOUGLAS

JUN 29 1989

State OR Date 6/16/89 No. _____

COUNTY SURVEYOR
DOUGLAS COUNTY, ORE

Corner Designation

1/4 S10 | S11

- Condition Report Only
- Not Found
- Renewed
- Unrecorded
- Surveyed In
- Referenced Out

Previous Renewals #170, #242

MONUMENT DETAIL

Monument(s) Found: (Condition and Source)

A 2 1/2" DIA. DCSO BRASS CAP ON A 1 1/4" O.D. IRON PIPE, SURROUNDED BY THREE RINGS, I.P. PROTRUDES 12" ABOVE GROUND. (FROM REN #170).

NOTE: BRASS CAP IS NOT PROPERLY MARKED "12" SHOULD BE A 10.

Accessories Found:

COUNTY SURVEYORS OFFICE

T 30 S
1/4 S12 | S11
R 6 W
1983

18" NOW 40" DIA. PONDEROSA PINE WITH A PREVIOUSLY OPENED BLAZE, SCRIBE MARKS VISIBLE "S" BEARS S23°W, 108.2 FT (REC. S25°W 108.2 FT) ORIG. BT.

14" NOW 18" DIA PONDEROSA PINE WITH ILLEGIBLE SCRIBE MARKS VISIBLE ON A PARTIALLY HEALED DOUBLE BLAZE, BEARS S22°E, 24.1 FT (REC. S20°E, 24.1 FT), REN #170

15" PINE NOW DOWN AND ROTTEN WITH SCRIBE MARKS VISIBLE ON OPEN DOUBLE BLAZE "Y4 S10 CS BT" BEARS N31°W, 56.5 FT TO ROOT HOLE (REC. N26°W 56.5 FT). REN #170

10" PONDEROSA PINE WITH A SINGLE BLAZE, SCRIBING VISIBLE "Y4 S10 BT" BEARS N59°W, 30.4 FT (AGREE'S WELL WITH REC). REN #242.

#2434

RENEWAL

Monument Set (Procedure and Description)

THE "2" FROM THE IMPROPER 1963 STAMPING
"S 12" IS STAMPED OUT AND A "0" AND "1989"
ARE ADDED TO BRASS CAP.

Monument Detail

COUNTY SURVEYORS OFFICE

T 30 S.

1/4
S10 | S11

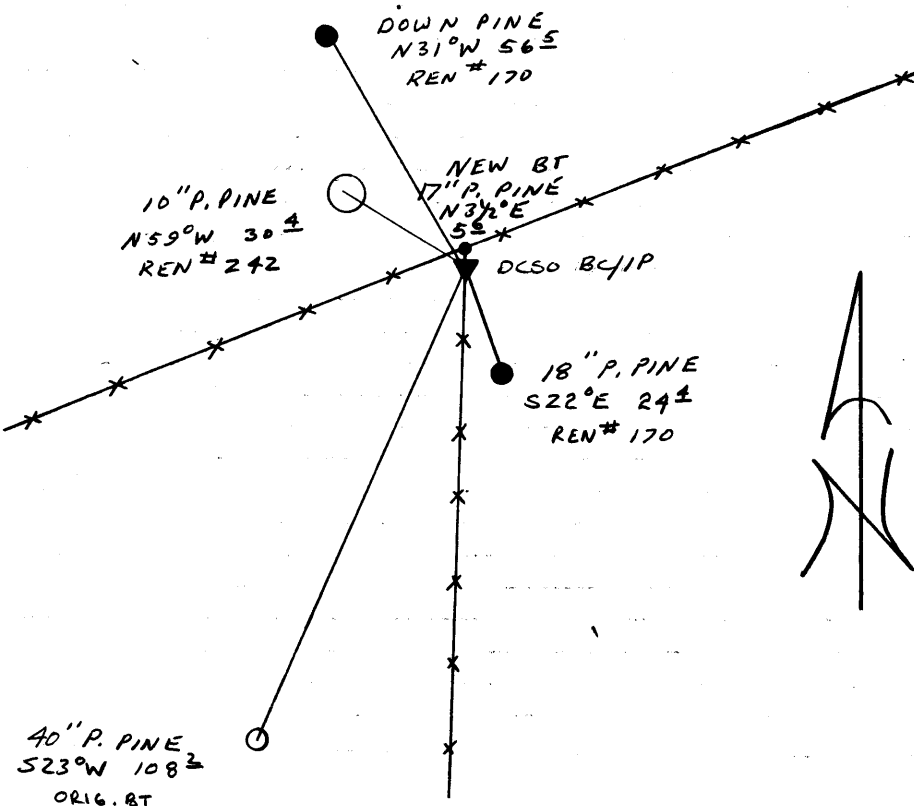
R6W

1989
1963

New Accessories

17" DIA PONDEROSA PINE FENCE CORNER SINGLE BLAZED AND
SCRIBED 4 1/2 FT ABOVE GROUND "1/4 SILCS BT" BEARS N 3 1/2° E, 51.6 FT.

Sketch of Monument, Accessories, and General Area



Location & Comments

CORNER LIES ON A
NE-SW RIDGE THAT SLOPES
SOUTHWEST.

Comp. Declin. 18° E
Agency DCSO
Party Chief RANDALL W SMITH
Notekeeper Randall W Smith
Witnesses STEPHEN J FLAISE

Address

Surveyor's Seal

REGISTERED
PROFESSIONAL
LAND SURVEYOR

Handwritten signature of Larry E. Monrean

OREGON
JULY 13, 1979
LARRY E. MONREAN
#1830