

GOVERNMENT CORNER RESTORATION FORM

FILED

*JS*

JUN 18 1989

Township 24S Range 6W Sec. 13 County DOUGLAS

State OREG. Date JUNE 10, 1989 No. \_\_\_\_\_

Corner Designation \_\_\_\_\_

COUNTY SURVEYOR  
DOUGLAS COUNTY, OREGON

- Condition Report Only
- Not Found
- Renewed
- Unrecorded
- Surveyed In
- Referenced Out

Previous Renewals #8, #61, 1973 BLM DEPENDENT RESURVEY

MONUMENT DETAIL

Monument(s) Found: (Condition and Source)

COUNTY SURVEYORS OFFICE

FROM RENEWAL #61 A 2 1/2 INCH  
DIAM. BRASS CAP (MARKED AS AT RIGHT) ON  
A 1 3/8 INCH O.D. IRON PIPE IS FIRMLY  
SET WITH TOP BENT 6 INCHES SOUTH  
OF PLUMB POSITION. EVIDENCE OF  
PREVIOUS MONUMENTS NOT FOUND.

R	S13	S18	R
G			S
W	S24	S19	W

T245

1959

Accessories Found:

ACCESSORIES CHECKED FROM PLUMB POSITION.

NO EVIDENCE OF ORIGINAL BEARING TREES IS FOUND.

FROM RENEWAL #8 A 12" B. OAK NOW A 14 INCH D.B.H.  
BLACK OAK WITH A POSSIBLE HEALED BLAZE (CENTER OF TREE BURNED  
OUT) BEARS S44°E, 42<sup>±</sup> FEET DISTANT (RECORD REN.#8 S41°E, 42<sup>±</sup> FT)

FROM RENEWAL #61 EVIDENCE OF ROOTS AND ROOTHOLE  
ARE FOUND BEARING APPROXIMATELY S41°W, 44<sup>±</sup> FEET DISTANT.

DUE TO LAND CLEARING AND CAT WORK IN AREA NO EVIDENCE  
OF OTHER BTS IS FOUND. OLD FENCES RUN SOUTH AND WEST  
FROM CORNER POSITION.

#112 T27-5<sup>x</sup>  
#133 T27-6<sup>x</sup>

RENEWAL

Monument Set (Procedure and Description)

Monument Detail

DESCRIBED FOUND CORNER MONUMENT IS TO BE COVERED BY UNSTABLE FILL SLOPE AND WILL NOT BE EASILY OCCUPIED IN FUTURE THEREFORE WE ESTABLISH A REFERENCE MONUMENT. THIS IS A 2 3/8 INCH DIAMETER BRASS CAP (MARKED AS AT RIGHT) ON A 1 3/8 INCH O.D. IRON PIPE FIRMLY SET PROTRUDING 6 INCHES ABOVE GROUND AND WHICH BEARS S45°W, 60° FEET DISTANT FROM THE FOUND CORNER MONUMENT.

DOUGLAS COUNTY SURVEYORS

T245

REF. POINT

R 513 | 518 R  
6 | 5  
W 524 | 519 W

N75°E 60 FT

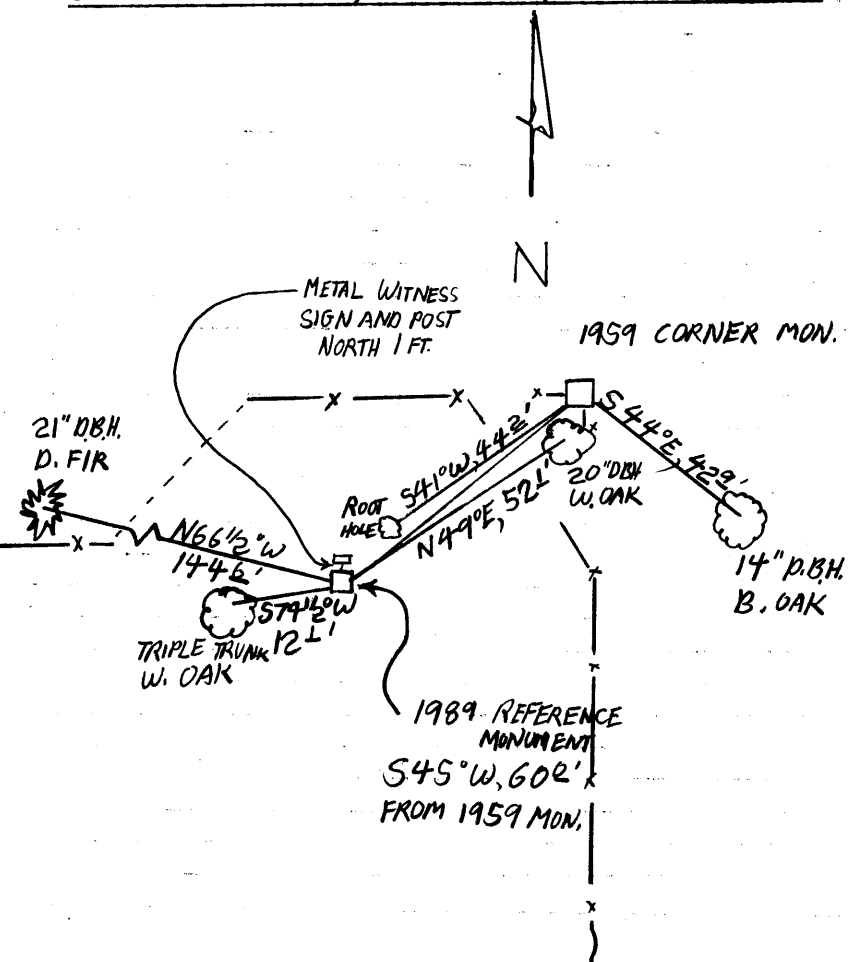
1989

OFFICE

New Accessories

NEW ACCESSORIES ARE TIED TO REFERENCE MONUMENT ONLY. A 20 INCH DBH. W. OAK SCRIBED "T245 R5 W 518 CS BT ON A DOUBLE BLAZE BEARS N49°E, 52 1/2 FEET DISTANT. A 20 INCH DBH SOUTHEASTERLY TRUNK OF A TRIPLE TRUNK W. OAK IS SCRIBED T245 R6 W 524 CS BT ON A DOUBLE BLAZE. THE CENTER OF THE ROOT CROWN OF THE TRIPLE TRUNK W. OAK BEARS S74 1/2°W, 12 FEET DISTANT. A 21 INCH D.B.H. DOUGLAS FIR SCRIBED T245 R6 W 513 CS BT ON A DOUBLE BLAZE BEARS N 66 1/2°W 144 1/2 FEET DISTANT.

Sketch of Monument, Accessories, and General Area



Location & Comments

MONUMENT LIES ON GRADUAL SW SLOPE ON SHOULDER OF RIDGE RUNNING FROM NORTHWEST TO SOUTHEAST.

Comp. Declin. 18°E  
Agency DCSD  
Party Chief R.W. SMITH  
Notekeeper Stephen John Flouse  
Witnesses S.J. FLAUSE

Address

Surveyor's Seal

REGISTERED PROFESSIONAL LAND SURVEYOR

Larry E. Monrean

OREGON JULY 13, 1979 LARRY E. MONREAN #1830