

GOVERNMENT CORNER RESTORATION FORM

FILED

JH

Township 275 Range 5W Sec. 7 County DOUGLAS

JUN 7 1989

State OREGON Date JUNE 2, 1989 No. _____

COUNTY SURVEYOR
DOUGLAS COUNTY, OREGON

Corner Designation

57	58
518	517

Condition Report Only
 Not Found
 Renewed
 Unrecorded
 Surveyed In
 Referenced Out

Previous Renewals 55, 137

MONUMENT DETAIL

Monument(s) Found: (Condition and Source)

FROM RENEWAL #55 A 3/4 INCH IRON BAR NOW FOUND TO BE A 1 INCH DIAMETER IRON BAR WITH THREADED END IS FIRMLY SET AND PROTRUDING 3 INCHES ABOVE GROUND.

COUNTY SURVEYORS OFFICE

T275

ABOVE MONUMENT IS SET ON SW EDGE OF B.C. MONUMENT SET IN RENEWAL #137. THIS IS A 2 1/2 INCH DIAMETER BRASS CAP MARKED AS AT RIGHT, SET ON A 1 1/2 INCH O.D. IRON PIPE FIRMLY SET AND PROTRUDING 15 INCHES ABOVE GROUND.

57	58
518	517

R5W

1970

Accessories Found:

11" NOW 21" DIA W. OAK WITH A FULLY HEALED PREVIOUSLY OPENED BLAZE BEARS N66°E, 39.9 FT (REC. N64 1/2°E, 40.9 FT TO CENTER OF TRUNK NEAR HORIZONTAL (ORIG BT))
 16" Y. OAK ORIGINAL NORTHWEST BT IS GONE
 18" NOW 36" DIA W. OAK WITH FULLY HEALED PREVIOUSLY OPENED DOUBLE BLAZE BEARS S53°E, 62.0 FT (AGREES WELL WITH RECORD (ORIGINAL BT)).
 14" NOW 23" DIA. 9 FT HIGH BROKEN TOP OAK WITH A FULLY HEALED PREVIOUSLY OPENED BLAZE BEARS S36°W, 88.4 FT (REC. S40 1/2°W, 88.4 FT (ORIG. BT)).
 12" NOW 10" DIA. W. OAK WITH A PARTIALLY HEALED SINGLE BLAZE ILLEGIABLE SCRIBE MARKS VISIBLE, BEARS S37°W, 36.1 FT PER REN #137
 20" NOW DOUBLE TRUNKED B. OAK (REC. W. OAK) A FULLY HEALED DOUBLE BLAZE IS FOUND ON 10" NORTH TRUNK. BASE OF TREE BEARS S4°E, 33.8 FT (REC S4°E, 34.8 TO CENTER OF TRUNK). PER REN #137.
 15" NOW 15" DIA. W. OAK WITH A FULLY HEALED SINGLE BLAZE BEARS N44°E, 50.8 FT (AGREES WITH RECORD) PER REN #137.
 22" NOW DOUBLE TRUNKED B. OAK WITH PREVIOUSLY OPENED PARTIALLY HEALED, NO SCRIBING VISIBLE, RESCRIBING VISIBLE "R6WS" FROM REN. #137. ALL BLAZES AND SCRIBING FOUND ON 18" DIA 9 FT HIGH BROKEN TOP SOUTHWEST TRUNK BASE BEARS N21°W, 102.4 FT (REC. N23°W 102.4 FT) PER REN #55 RESCRIBED IN REN #137

#170x

C

Monument Set (Procedure and Description)

Monument Detail

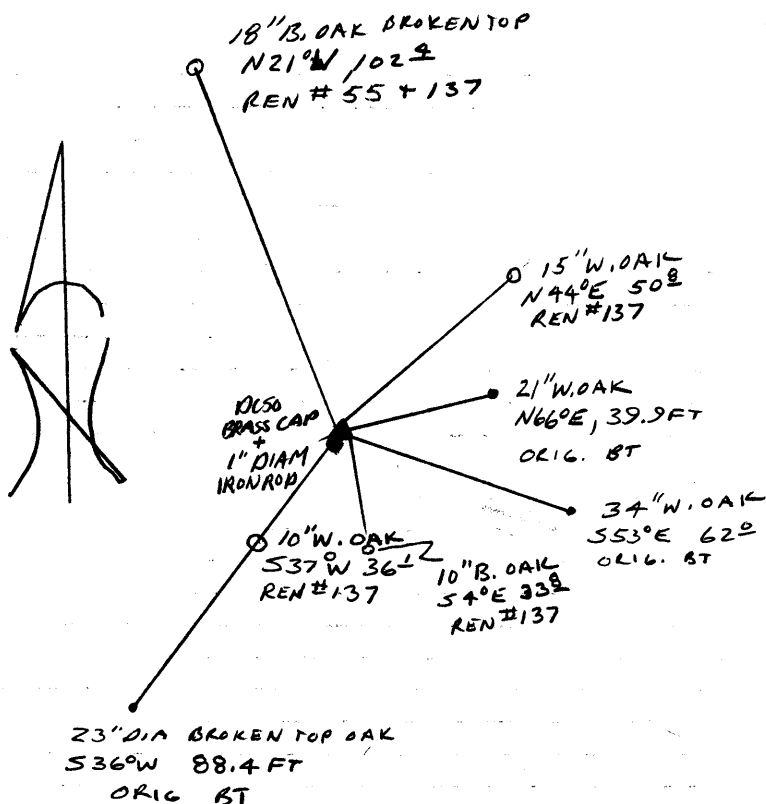
NONE

N/A

New Accessories

NONE

Sketch of Monument, Accessories, and General Area



Location & Comments

CORNER LIES ON A SOUTHEAST
SLOPE APPROX. 125 FT EAST
FROM TOP OF NE-SW
RUNNING RIDGE.

Comp. Declin. 18 1/2° E
Agency DLSO
Party Chief RANDALL W. SMITH
Notekeeper *Randall W. Smith*
Witnesses STEPHEN J. FLAVEL
LINDA RIGUTTO

Address

Surveyor's Seal

REGISTERED
PROFESSIONAL
LAND SURVEYOR

Larry E. Monrean

OREGON
JULY 13, 1979
LARRY E. MONREAN
#1830