

GOVERNMENT CORNER RESTORATION FORM

FILED

Township 21S Range 5W Sec. 34 County DOUGLAS

JK

State OR Date 4/19/82 No. _____

APR 27 1989

Corner Designation

$\frac{1}{4}$
534 | 535

COUNTY SURVEYOR
DOUGLAS COUNTY, ORE

- Condition Report Only
- Not Found
- Renewed
- Unrecorded
- Surveyed In
- Referenced Out

MONUMENT DETAIL

Previous Renewals M19-53, M81-72

Monument(s) Found: (Condition and Source)

2 1/2" DIA. DCSSO BRASS CAP ON A
1 1/4" O.D. IRON PIPE, 2 IN BELOW
GROUND LEANING 8 IN SOUTHEAST
OF PLUMB. (PER M19-53)

3/4" BOLT WITH NUT PROTRUDING 8" ABOVE
GROUND BEARS N 74 1/2° W, 0.8 FT
FROM DCSSO BC/IP PLUMB POSITION
(SOURCE UNKNOWN)

CO SURVEYORS
T 21S
34 | 35 $\frac{1}{4}$
R 5W
COR
OFFICE

Accessories Found:

BEARING AND DISTANCES TAKEN TO PLUMB POSITION OF BC/IP

18" FIR PER M 19-53 IS GONE PROBABLY REMOVED BY
ROAD WORK ON HIGHWAY

54" NOW 60" DIA 2 1/2 FT HIGH CEDAR STUMP WITH A
PREVIOUSLY OPENED BLAZE AND AXE MARK, NO SCRIBING
FOUND BEARS S 49° W, 101.5 FT (REC. S 59° W, 100.5 FT)
(PER M 19-53).

3/4" IRON ROD NOW BENT 3/4" BOLT BEARS S 1° W, 170.8 FT
(AGREES WELL WITH RECORD) PER M 19-53.

5/8" IRON ROD BEARS S 1° W, 223.68 FT (AGREES WELL WITH
RECORD) PER M 81-72

#166X

RENEWAL

Monument Set (Procedure and Description)

DCSO BC/IP RETURNED TO PLUMB
POSITION, BC IS FLUSH WITH
GROUND. POSITION OF CORNER
AS DETERMINED IN M19-53 PERPETUATED
BY NEW BT'S BELOW

Monument Detail

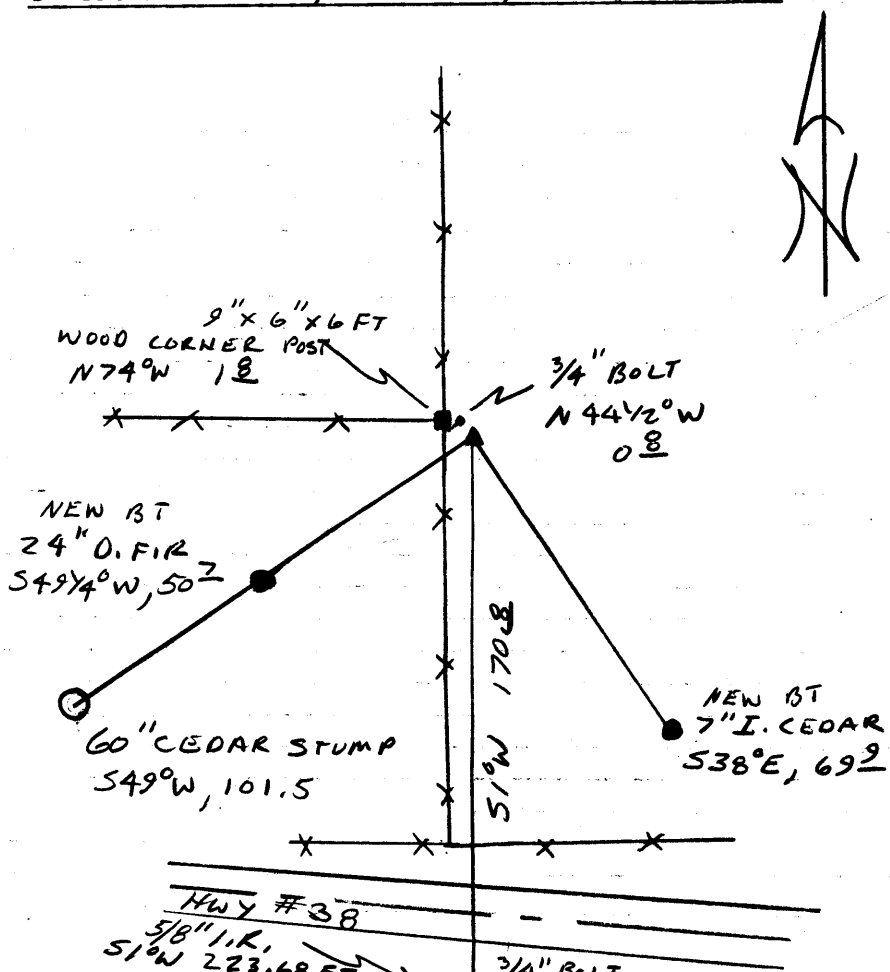
N/A

New Accessories

24" D. FIR DOUBLE BLAZED AND SCRIBED "Y4 S34 CS BT"
BEARS S49Y4°W 50.7 FT

A DOUBLE TRUNKED I CEDAR DOUBLE BLAZED AND SCRIBED
"Y4 S35 CS BT" ON 7" SOUTHWEST TRUNK BEARS S38°E, 69.9 FT
TO ROOT CROWN.

Sketch of Monument, Accessories, and General Area



Location & Comments

CORNER IS APPROX
140' NORTH OF HIGHWAY

Comp. Declin. 18°E
Agency DCSO
Party Chief RANDALL W SMITH
Notekeeper [Signature]
Witnesses STEPHEN J FLAUSÉ

Address

Surveyor's Seal

REGISTERED
PROFESSIONAL
LAND SURVEYOR

[Signature]

OREGON
JULY 13, 1979
LARRY E. MONREAN
#1830