

GOVERNMENT CORNER RESTORATION FORM

FILED

Township 27S Range 4W Sec. 19 County DOUGLAS

State OREGON Date 4/12/89 No. \_\_\_\_\_

APR 20 1989

Corner Designation

1/4

S24 | S19

COUNTY SURVEYOR  
DOUGLAS COUNTY, ORE.

Condition Report Only

- Not Found
- Renewed
- Unrecorded
- Surveyed In
- Referenced Out

Previous Renewals #71 <sup>(T.27-A)</sup> (PROPORTIONED POSITION)

Monument(s) Found: (Condition and Source)

A 2 1/2 INCH DIAMETER BRASS CAP (MARKED AS AT RIGHT) FOUND 5 INCHES BELOW SURFACE OF GRAVEL SHOULDER ON NORTH EDGE OF BUCKHORN ROAD (CO. RD. #17).  
ORIGINAL SMALL STONE NOT SEARCHED FOR, NOT FOUND IN PAST.

MONUMENT DETAIL

COUNTY SURVEYORS

1/4

24 | 19

OFFICE

Accessories Found:

ORIGINAL ACCESSORIES NOT SEARCHED FOR NOT FOUND IN PAST.

FROM RENEWAL #71 TWO ACCESSORIES FOUND. 10D NAIL IN ANCHOR POST TO NE GONE. A 10D NAIL IN A GUY POLE NOW A 1 FOOT TALL SAWED OFF POLE (NO EVIDENCE OF NAIL) BEARS N 54 1/2° W 21 1/2 FEET DISTANT TO CENTER OF POLE (RECORD N 54° 38' W, 21 1/2 FEET IS TO NEAR EDGE OF POLE). A COPCO POLE # B 6196 NOW A COPCO POWER POLE TAGGED B6127 BEARS S 27° W 41° (RECORD S 27° W 41° FT. IS TO NEAR EDGE OF POLE).

#169 T.27-5 X

#151 T.27-4 X

RENEWAL

Monument Detail

Monument Set (Procedure and Description)

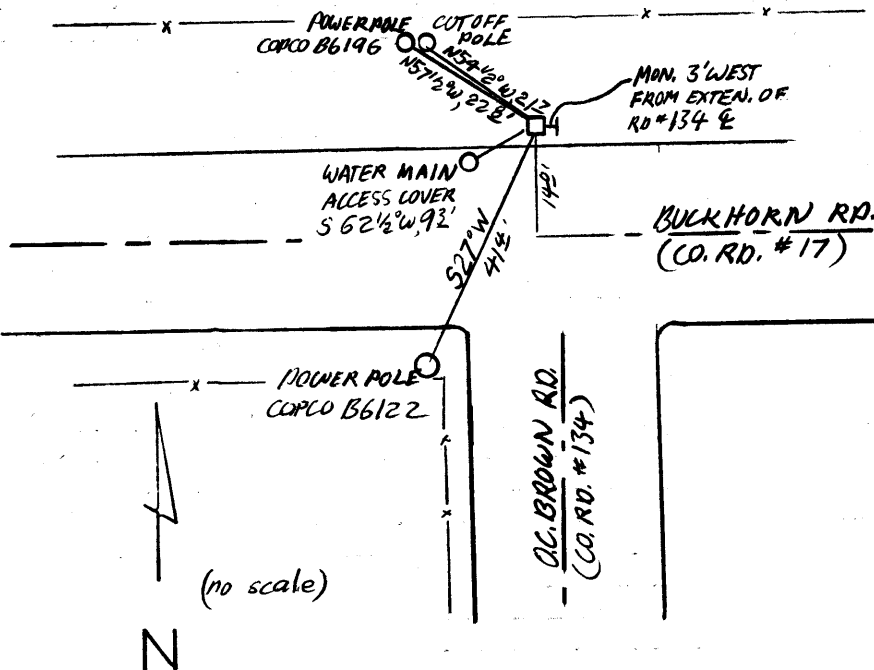
FOUND MONUMENT AGREES WELL WITH 1953  
BYRON DESCRIPTION FROM RENEWAL # 71 (ASIDE  
FROM TAG IDENTIFICATIONS OF POWERPOLES POSSIBLY  
AN ERROR FROM RENEWAL # 71 OR A LATER SWITCH  
OF TAGS BY POWER COMPANY). WE PERPETUATE  
POSITION AS FOUND WITH THE ADDITION OF NEW  
ACCESSORIES DESCRIBED BELOW.

N/A

New Accessories

THE CENTER OF A CAST IRON WATER MAIN ACCESS COVER 8 INCHES IN DIAMETER MARKED "WATER" SET FLUSH WITH  
SURFACE OF BUCKHORN RD. (CO. RD. #17), BEARS S62 1/2° W, 93 FEET.  
A POWERPOLE WITH A COPCO TAG MARKED B6196 BEARS N57 1/2° W, 22.8 FEET  
DISTANT.

Sketch of Monument, Accessories, and General Area



Location & Comments

Comp. Declin. 18°E  
Agency DLSD  
Party Chief R.W. SMITH  
Notekeeper Stephen John Flause  
Witnesses S. J. FLAUSE

Address

Surveyor's Seal

REGISTERED  
PROFESSIONAL  
LAND SURVEYOR

*Handwritten signature of Larry E. Monrean*

OREGON  
JULY 13, 1979  
LARRY E. MONREAN  
#1830