

GOVERNMENT CORNER RESTORATION FORM

FILED

Township 25S Range 2W Sec. 18 County DOUGLAS

State OR Date 4/12/89 No. _____

APR 20 1989

Corner Designation

$\frac{1}{4} \frac{518}{519}$

COUNTY SURVEYOR
DOUGLAS COUNTY, OR

- Condition Report Only
- Not Found
- Renewed
- Unrecorded
- Surveyed In
- Referenced Out

MONUMENT DETAIL

Previous Renewals 1962 BLM REMONUMENTATION

Monument(s) Found: (Condition and Source)

A BLM 3/4" DIA. BRASS CAP ON A
2 1/2" DIA. IRON PIPE LEANING 9 IN.
SOUTHWEST OF PLUMB. BL/1P IS
FOUND 8 IN BELOW GROUND

U.S. DEPT. OF THE INTERIOR

$\frac{1}{4} \frac{518}{519}$

T25S R2W
1962

BUR. OF LAND MANAGEMENT

Accessories Found:

MEASUREMENTS TAKEN TO PLUMB POSITION OF BL/1P
ORIG. BT'S

NORTHWEST MADRONE GONE FALLS IN CAT ROAD

7" FIR NOW BROKEN STUMP AND! ROOTS OF INDETERMINABLE SIZE HEMLOCK,
NO SCRIBING OR BLAZES FOUND, BEARS S70°E, 8.6 FT
(AGREES WITH 1962 BLM RECORD)

1962 BLM BT'S

6" NOW 6" DIA. 6" HIGH ROTTED D. FIR STUMP WITH HEALED OVER
AXE MARKS FOUND AT BOTTOM OF LOWER BLAZE, NO SCRIBING,
BEARS N2°E, 22.1 FT (AGREES WITH RECORD).

15" NOW 18" DIA. 1 1/2 FT HIGH HEMLOCK STUMP, NO BLAZES
OR SCRIBING FOUND, BEARS S20°E, 23.1 FT (AGREES WITH
RECORD).

BT AND BO NOT OF RECORD

35" DIA 7 FT HIGH CEDAR STUMP WITH "W" NAIL IN WEST BASE
ONE W. CO YELLOW TAG WITH A BEARING AND DIST. OF
S81 1/2°W, 30.6 FT. WE MEASURE N81 1/2°E, 30.6 FT

ON BACK

C.S. File No. 62/63-8

#234

C

RENEWAL

Monument Detail

Monument Set (Procedure and Description)

9" HEMLOCK WITH A SILVER AND A YELLOW TAG. SILVER TAG WITH A BEARING AND DISTANCE OF S25°E, 1 FT; YELLOW TAG WITH A BEARING AND DISTANCE OF N18°E, 1.5 FT. WE MEASURE S13°W, 1.8 FT.

N/A

1962 BLM BC/IP IS RETURNED TO PLUMB POSITION NOW PROTRUDES 2 IN ABOVE GROUND.

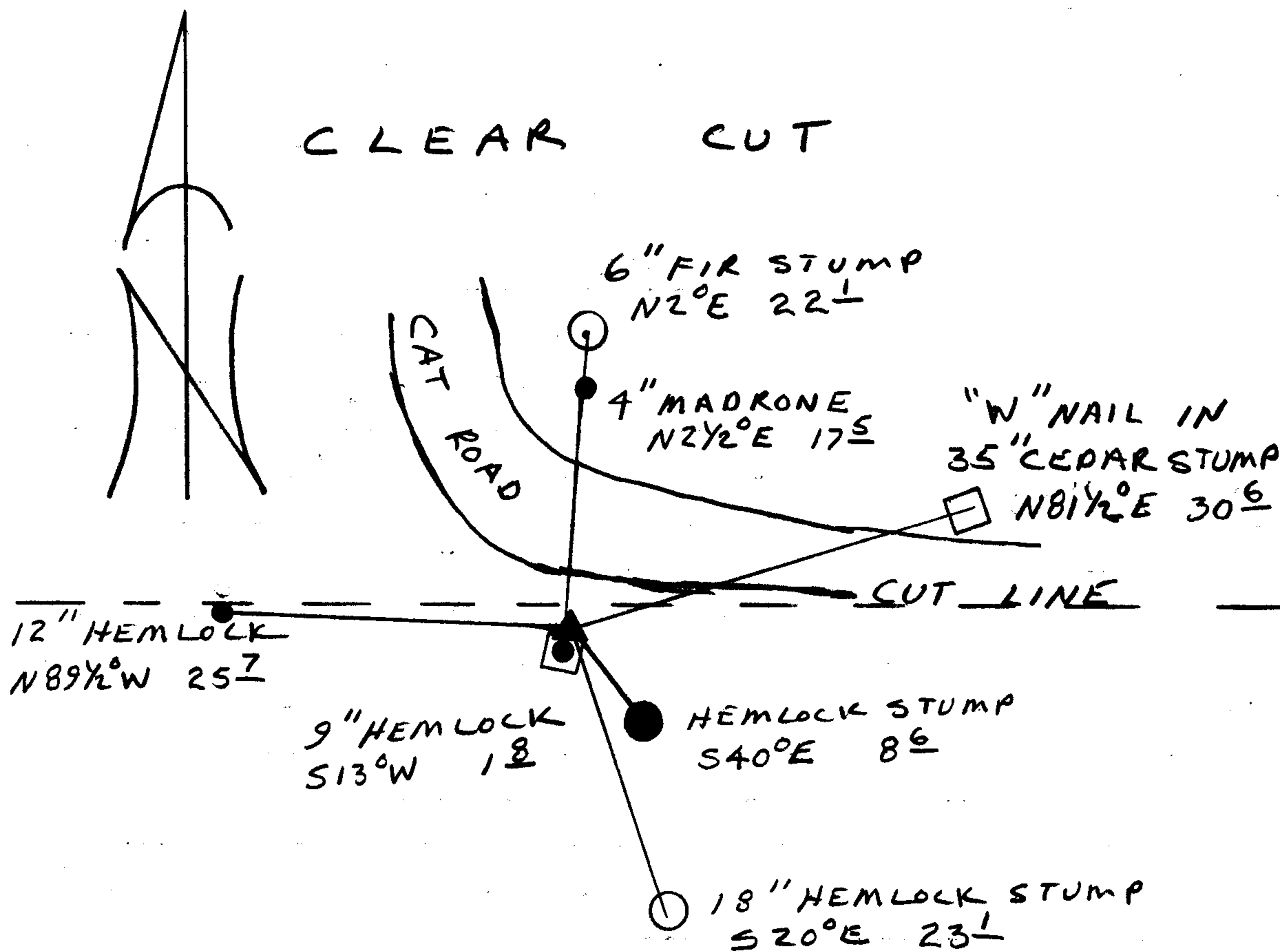
New Accessories

A MULTI. TRUNKED MADRONE DOUBLE BLAZED AND SCRIBED "X BT" ON 4" SOUTH TRUNK; BEARS N2 1/2°E, 17.5 FT (TO ROOT CROWN);

12" HEMLOCK DOUBLE BLAZED AND SCRIBED "Y 518 CS BT" BEARS N89 1/2°W, 25.7 FT.

9" HEMLOCK DOUBLE BLAZED AND SCRIBED "Y 519 CS BT" BEARS S13°W, 1.8 FT

Sketch of Monument, Accessories, and General Area



APPROX 20 YEAR OLD REPROD

- ▲ 1962 BLM BC/IP
- ORIG. BT
- BT'S FROM 1962 BLM RECORDS
- FD BT'S NO RECORD
- NEW BT'S

Location & Comments

CORNER LIES ON AN EAST-WEST CUTLINE AT SOUTH EDGE OF CAT ROAD

Comp. Declin. 18°E
Agency DCSO
Party Chief RANDALL W SMITH
Notekeeper Randall W Smith
Witnesses STEPHEN J FLAUSE

Address

Surveyor's Seal

REGISTERED PROFESSIONAL LAND SURVEYOR

Larry E. Monrean

OREGON
JULY 13, 1979
LARRY E. MONREAN
#1830

WEYCO NOTES (SUBMITTED 6/20/89)

FILED

JUN. 23 1989

COUNTY SURVEYOR
DOUGLAS COUNTY ORE

1/4 Cor $\frac{18}{19}$ 255 2W
GLO-1900

Stone - 16x8x6 mxd 1/4 N face
9" Arbutus N22W 29 lbs

7" Fir S45E 13 "

GLO 1962

fd orig Stone mxd 1/4 N face

15" mad N27W 30 1/2 lbs

20" H S40E 13 "

New BTS

6" Fir N02E 33 1/2 lbs

15" H S28E 35 "

W. Co 10/11/48 K.H. Bergosner

fd 2 BTS, Stone mxd -

Ref 2 tags

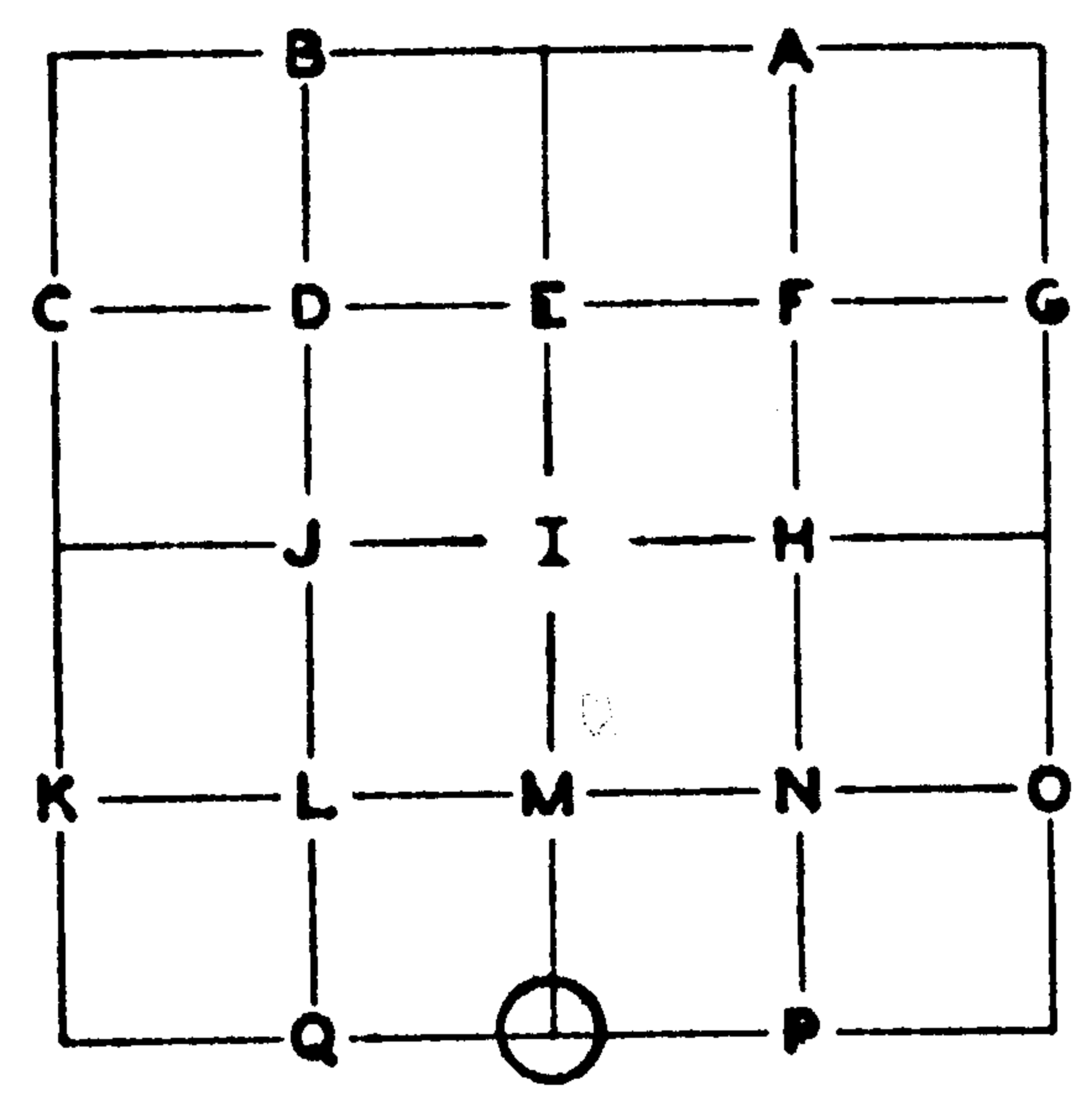
12" mad N25W 19.1

12" H S43E 8.6

PUBLIC LAND CORNERS

WEYERHAEUSER COMPANY
SPRINGFIELD BRANCH

TOWNSHIP 25 South RANGE 2 West
SECTION 18 CORNER S¹/₄
COUNTY Douglas OREGON



GLO SURVEY RECORD			
DATE: <u>1900</u>			
CORNER <u>16" x 18" x 6" stone</u>			
ACCESSORIES:			
	BEARING-	LINKS-	FEET-
1) 9" Arbutus	N 22 W	29.0	19.1
2) 7" fir	S 45 E	13.0	8.6

PRESENT CONDITION - (DESCRIBE FULLY -
USE PAGE 2 IF NEEDED FOR EXPLANATION.)

GLO SURVEY RECORD			
DATE: <u>1962</u>			
Stone			
1) 15" madrone	N 27 W	30 ¹ / ₂ links	
2) 20" hemlock	S 40 E	13 links	
3) 6" fir	N 02 E	33 ¹ / ₂ links	
4) 15" hemlock	S 28 E	35 links	

PRESENT CONDITION: 6-9-82
Found
Down - out of place
Hemlock stub - no evidence of BT except bearing & distance.
Not found.
Not found.

CORNER SET: Brass cap by GLO 1962 MAG. DECL.: 20° E

BEARING AND DISTANCE TO ABOVE IDENTIFIED SURVEY ACCESSORIES:

BEARING-	FEET-	SURVEY-

C. S. 62/63-8

ACCESSORIES ADDED THIS DATE: June 9, 1982

MAGNETIC DECLINATION

20° E

	BEARING	FEET	ORIG. B.T.	"W" NAIL	PLATE	BRASS DISC
24" incense cedar	N 81½ E	30.6	---	X	X	---
6" hemlock	S 18 W	1.5	---	X	X	---

IDENTIFIED ON PHOTO:

INFORMATION ON LOCATION OF CORNER AS NOW SET:

GROUND COVER: Unlogged cedar and hemlock to north, old logging to south.

(USING FORM LINES SKETCH TOPOG AT CORNER ON PAGE 2 PLAT)

SLOPE FACES (GIVE BEARING IN DEGREES) S 50 W ON MINUS (-) 45 %

NORTH: 0

SOUTH: -10%

EAST: +45% 110° to 640 road

WEST: -40%

WORK DONE FOR W. CO.

FIELD NOTES IN BOOK: _____

BY: Kenneth Perkins DATE: June 9, 1982
ENGINEER - SURVEYOR

ASSISTED BY: Lee Thiede

UNDER THE SUPERVISION OF:

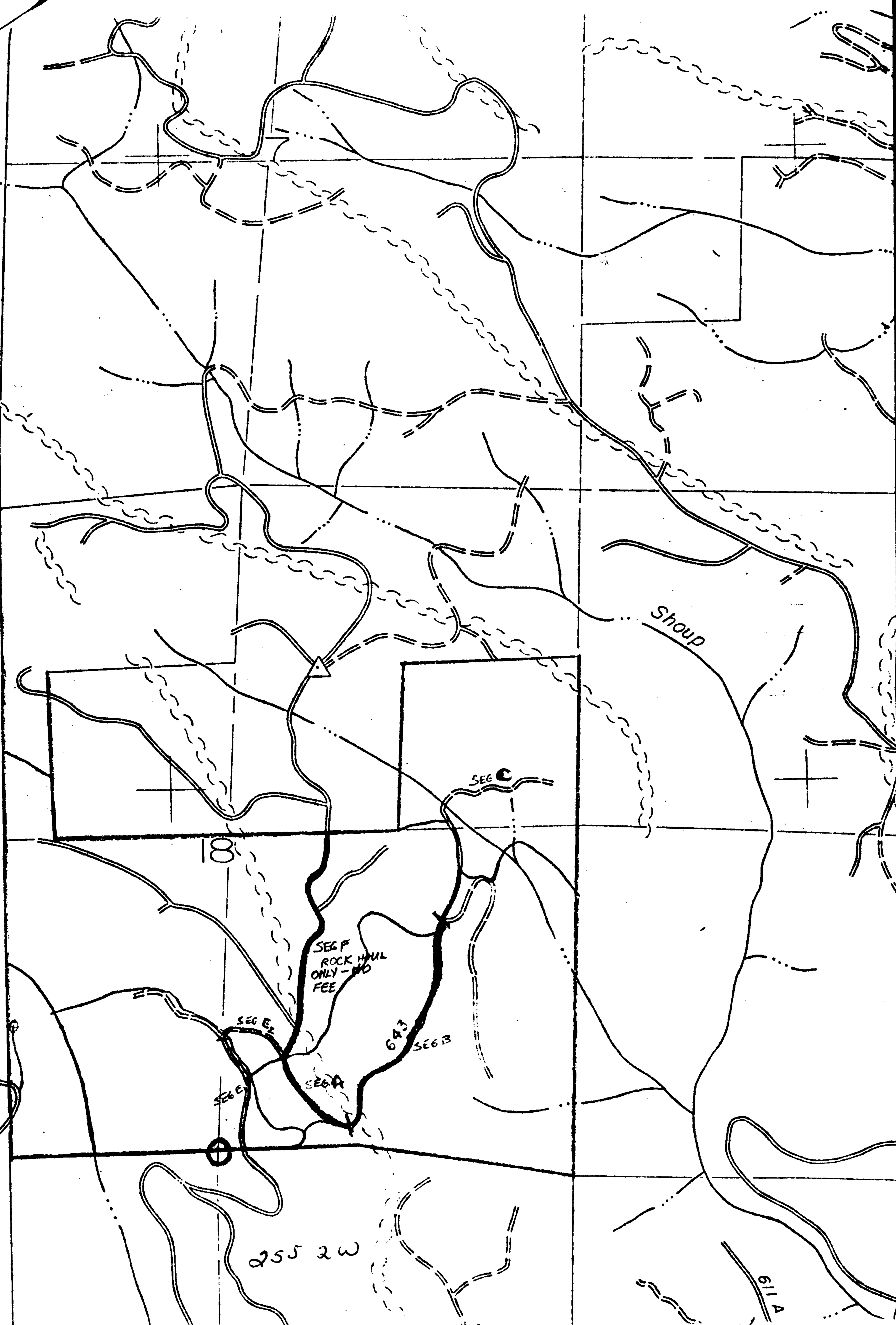
COPIES SENT TO: _____

SEAL

PAGE 2

C. S. 62/63-8

Douglas Co
Stem Filtration
440-4277



255 2W

CS 62/63-8

