

GOVERNMENT CORNER RESTORATION FORM

Township 24S Range 4W Sec. 18 County _____

APR 20 1989

State OR Date 4/11/89

No. _____

COUNTY SURVEYOR
DOUGLAS COUNTY, ORE.

Corner Designation _____

$\frac{1}{4}$ $\frac{S18}{S19}$

- _____ Condition Report Only
- _____ Not Found
- Renewed
- _____ Unrecorded
- _____ Surveyed In
- _____ Referenced Out

Previous Renewals #34

MONUMENT DETAIL

Monument(s) Found: (Condition and Source)

A 2 1/2" DIA. DCSO BRASS CAP ON A
1 1/2" O.D. IRON PIPE PROTRUDING
9" ABOVE GROUND. (PER REN #34)

COUNTY SURVEYOR'S OFFICE

$\frac{1}{4}$ $\frac{S18}{S19}$

T 24S R 4W
1959

Accessories Found:

12" NOW 24" DIA. 2 FT HIGH BURNT OUT OAK STUMP WITH
EVIDENCE OF A PREVIOUSLY OPENED BLAZE, NO SCRIBING OR
AXE MARKS VISIBLE BEARS S73°W, 86.5 FT (AGREES
WITH RECORD). ORIG. BT

33" NOW 37" DIA. W. OAK WITH A FULLY HEALED DOUBLE
BLAZE BEARS S69Y2°W, 88.6 FT (REL. S68°W, 88.6 FT)
PER REN #34

A DOUBLE TRUNKED W. OAK WITH A FULLY HEALED DOUBLE BLAZE
FOUND ON 12" NOW 15" DIA. SOUTHEAST TRUNK, BEARS
N33°W 54.8 FT (REL N33°W, 54.2 FT DISTANCE IS TO
CENTER OF SOUTHEAST TRUNK) PER REN #34

RENEWAL

Monument Set (Procedure and Description)

Monument Detail

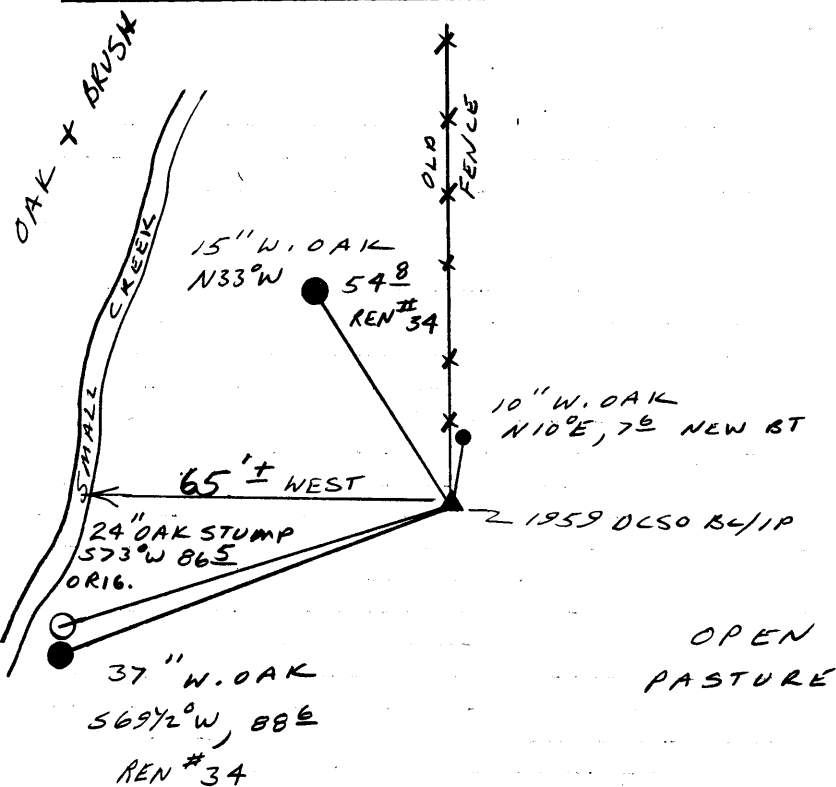
N/A

N/A

New Accessories

10" DIA. W. OAK DOUBLE BLAZED AND SCRIBED "1/4 S 18 CS BT"
BEARS N10°E, 7.6 FT.

Sketch of Monument, Accessories, and General Area



Location & Comments

Comp. Declin. 18°E
 Agency DCSO
 Party Chief RANDALL W SMITH
 Notekeeper Randall W Smith
 Witnesses STEPHEN J FLAUS

Address

Surveyor's Seal

REGISTERED
 PROFESSIONAL
 LAND SURVEYOR

Larry E. Monrean

OREGON
 JULY 13, 1979
 LARRY E. MONREAN
 #1830