



RENEWAL

Monument Set (Procedure and Description)

Monument Detail

3/4" I.R. SET BY ROBERT DEAN PERPETUATED BY BEARING TREES DESCRIBED BELOW.

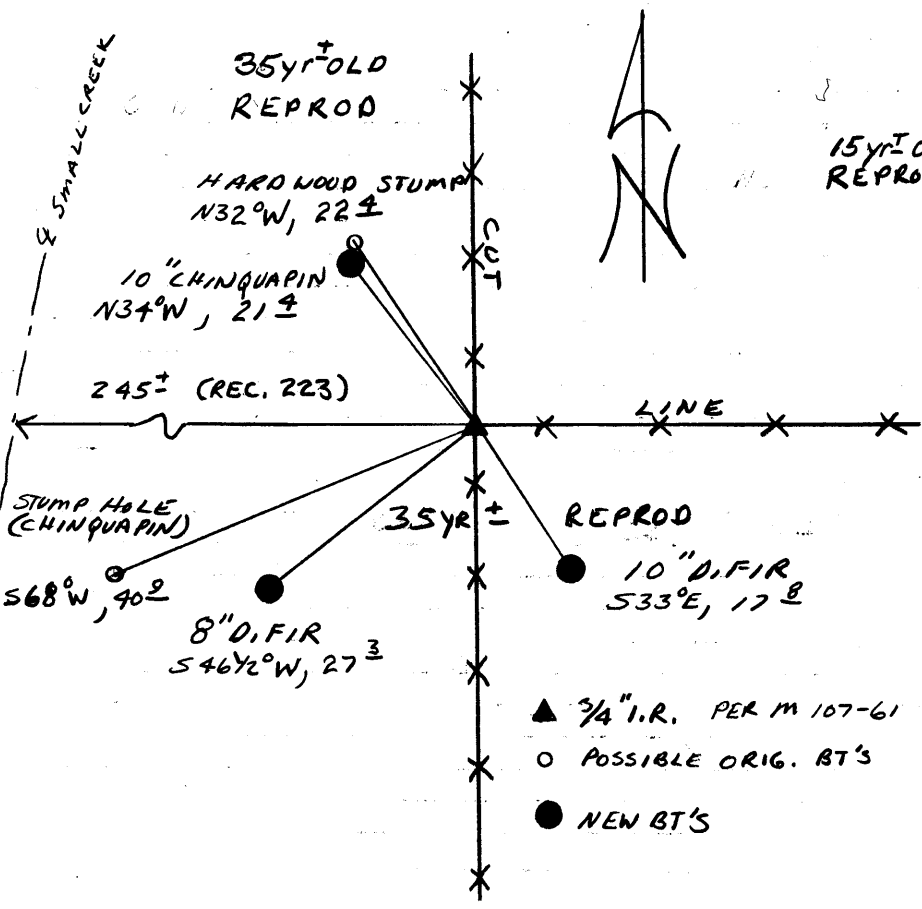
N/A

New Accessories

- 10" DIA. CHINQUAPIN DOUBLE BLAZED AND SCRIBED "Y4S8CS BT" BEARS N34°W, 21± FT.
- 10" DIA. D. FIR DOUBLE BLAZED AND SCRIBED "Y4S17CS BT" BEARS S33°E, 17± FT.
- 8" DIA. D. FIR DOUBLE BLAZED AND SCRIBED "Y4S17CS BT" BEARS S46½°W, 27± FT.

Sketch of Monument, Accessories, and General Area

Location & Comments



CREEK TO THE WEST LOOKS TO HAVE ERODED WEST. ORIGINAL CALL IS IN BOTTOM OF DRAW

Comp. Declin. 18°E  
 Agency DCSO  
 Party Chief RANDALL W SMITH  
 Notekeeper Randall W Smith  
 Witnesses STEPHEN J FLAUSE

Address

Surveyor's Seal

REGISTERED PROFESSIONAL LAND SURVEYOR

*Janey T. Moore*

OREGON  
JULY 13, 1979  
LARRY E. MONREAN  
#1830