

GOVERNMENT CORNER RESTORATION FORM

Township 23S Range 5W Sec. 57 County DOUGLAS

State OR Date 4/13/89 No. _____

FILED

JL
APR 19 1989

Corner Designation

57	58
518	517

COUNTY SURVEYOR
DOUGLAS COUNTY, ORE.

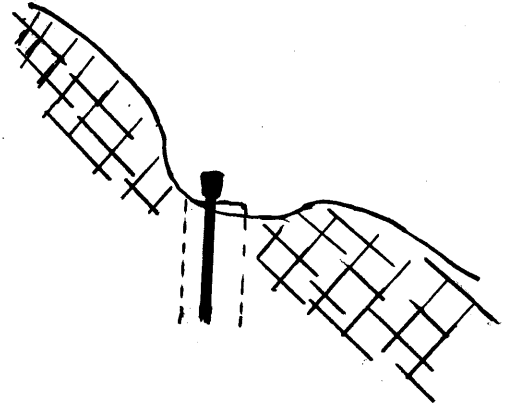
- Condition Report Only
- Not Found
- Renewed
- Unrecorded
- Surveyed In
- Referenced Out

Previous Renewals M107-61

Monument(s) Found: (Condition and Source)

A 3/4" I.R. STAMPED "LS 1808"
PROTRUDES 3" OUT OF A 8" DIA.
WOOD POST. 3/4" I.R. IS IN A
2 FT DIA. 1 FT DEEP DUG OUT
HOLE. (SET BY ROBERT DEAN
IN SURVEY M107-61).

MONUMENT DETAIL



Accessories Found:

FOUND POSSIBLE REMAINS OF THREE ORIGINAL BEARING
TREES; NO BLAZES, SCRIBING OR AXE MARKS FOUND.
NO EVIDENCE OF ORIGINAL NORTHEAST BT FOUND

18" NOW DEPRESSION IN GROUND, DUG UP REMNANTS OF BADLY
DETERIORATED BURNT TRUNK AND ROOTS OF INDETERMINABLE SIZE D. FIR BEARS
N8°W, 11² FT (AGREES WITH RECORD).

8" NOW DEPRESSION IN GROUND, DUG UP REMNANTS OF BADLY
DETERIORATED BURNT TRUNK OF INDETERMINABLE SIZE D. FIR BEARS
S89°E, 38.9 FT (AGREES WITH RECORD)

14" NOW COMPLETELY DETERIORATED TREE DUG UP SMALL
PIECES OF BURNT WOOD. BEARS S52Y2°W, 13.2 FT (AGREES
WITH RECORD).

#126 ✓

C.S. File No. 62/63-4c

RENEWAL

Monument Set (Procedure and Description)

Monument Detail

NONE

3/4" I.R. SET BY ROBERT DEAN
PERPETUATED BY BT'S DESCRIBED
BELOW

N/A

New Accessories

7" D.FIR DOUBLE BLAZED AND SCRIBED "T23S R5W S8 CS BT" BEARS N80 1/2° E, 6 1/2 FT

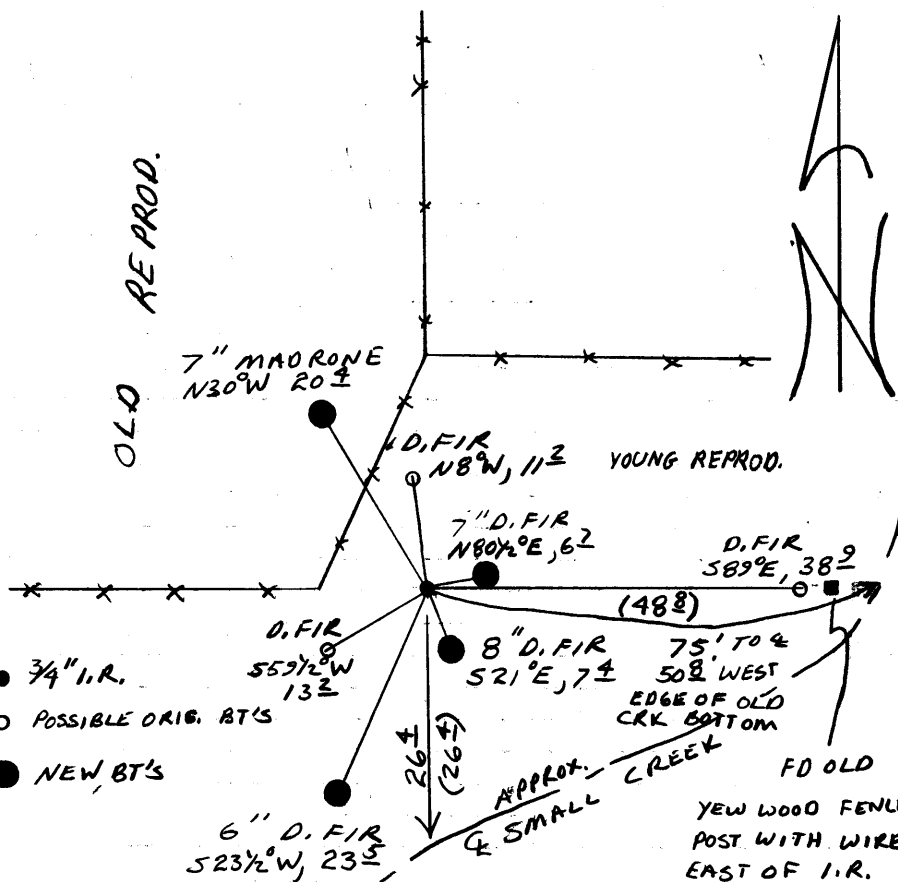
8" D.FIR DOUBLE BLAZED AND SCRIBED "T23S R5W S17 CS BT" BEARS S21° E, 7 1/2 FT

6" D.FIR DOUBLE BLAZED AND SCRIBED "T23S R5W S18 CS BT" BEARS S23 1/2° W, 23 1/2 FT

7" MADRONE BARK SCRIBED "T23S R5W S17 CS BT" BEARS N30° W, 20 1/2 FT

Sketch of Monument, Accessories, and General Area

Location & Comments



CORNER LIES AT GUT LINE AND
OLD FENCE CORNER. CALLS
OF A STREAM SOUTH AND EAST
FITS WELL WITH POSITION OF CORNER
DETERMINED BY ROBERT DEAN.
STREAM POSITION TO THE EAST IS
A LITTLE LONG. STREAM LOOKS TO
HAVE MOVED EAST. POSITION OF OLD
STREAM BED FITS WELL.

Comp. Declin. 18° E
Agency ALSO
Party Chief RANDALL W SMITH
Notekeeper Randall W Smith
Witnesses STEPHEN J FLAUSE

Address

Surveyor's Seal

REGISTERED
PROFESSIONAL
LAND SURVEYOR

Larry T. Monrean

OREGON
JULY 13, 1979
LARRY E. MONREAN
#1830