

GOVERNMENT CORNER RESTORATION FORM

FILED

APR 11 1989

Township 25S Range 2W Sec. 17 County DOUGLAS

State OR Date 4/6/89 No. \_\_\_\_\_

COUNTY SURVEYOR  
DOUGLAS COUNTY, ORE

Corner Designation

1/4 518 | 517

- Condition Report Only
- Not Found
- Renewed
- Unrecorded
- Surveyed In
- Referenced Out

Previous Renewals M56-35

MONUMENT DETAIL

Monument(s) Found: (Condition and Source)

FOUND ORIGINAL STONE, FIRMLY SET MEASURING 6 IN. BY 8 IN. ON TOP AND PROTRUDING 7 IN. ABOVE GROUND. ORIGINAL STONE IS CLEARLY MARKED "1/4" ON WEST SIDE.

(WHEN REMOVED STONE MEASURED 18" LONG)

N/A

Accessories Found:

40" NOW 49" DIA. D. FIR WITH A FULLY HEALED DOUBLE BLAZE AND AXED MARKS ON BARK "X X" BEARS 575°E, 4.5 FT. (REC. 575°E 2.0 FT POSSIBLE FACE MEASUREMENT) ORIG. BT.

20" NOW 32" DIA. 2 FT HIGH CEDAR STUMP, WITH A LOWER HEALED BLAZE, STUMP HAS A ROTTED OUT CENTER WITH AN AXE MARK AT BOTTOM OF BLAZE, NO SCRIBING FOUND. BEARS N71Y2°W, 35.0 FT (ORIG. REC. N65°W 35.0 FT) ORIG. BT

#1224

RENEWAL

Monument Set (Procedure and Description)

ORIGINAL STONE IS REFERENCED AND A 8 1/4 IN LONG BOAT SPIKE WITH A 1 1/4 DIA. HEAD STAMPED "DCSO 1/4 1989" IS SET AT REFERENCE POSITION 15 IN. BELOW GROUND. A 2 3/8 IN DIA. BRASS CAP ON A 1 3/8" O.D. 1 BY 32" LONG IRON PIPE IS SET OVER BOAT SPIKE AT REFERENCED POSITION AND PROTRUDES 13 IN. ABOVE GROUND. ORIGINAL STONE IS SET ALONG EAST EDGE OF BC/IP WITH SIDE MARKED "Y4" FACING WEST, STONE PROTRUDES 4 IN ABOVE GROUND. BC/IP AND ORIGINAL STONE ARE SURROUNDED BY A 2 FT DIA. MOUND OF STONE.

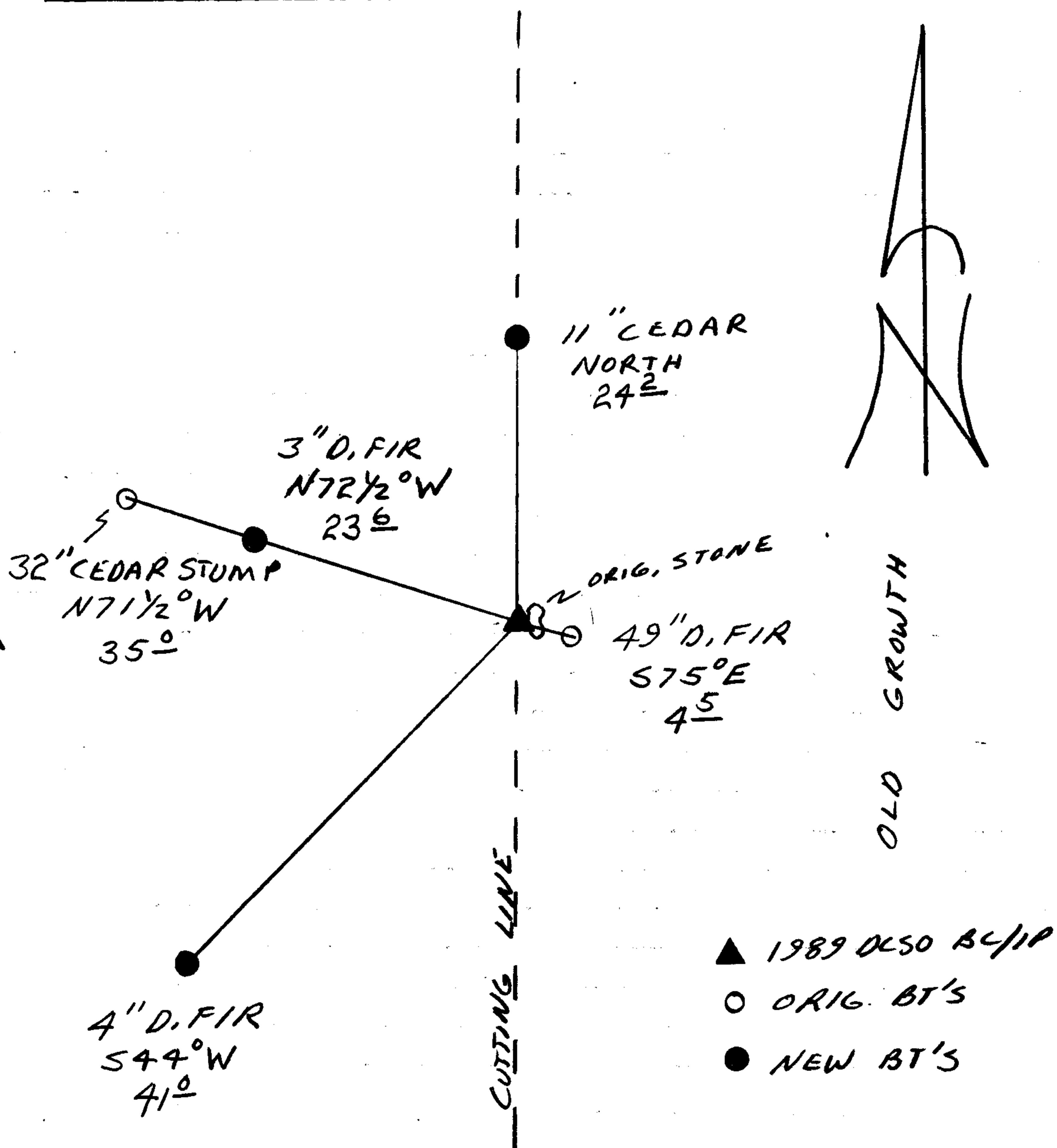
Monument Detail

DOUGLAS COUNTY SURVEYORS OFFICE  
T25S R2W  
1/4  
S18 | S17  
1989

New Accessories

4" DIA. D. FIR DOUBLE BLAZED AND SCRIBED " X BT " BEARS S44°W, 41.0 FT  
3" DIA. D. FIR DOUBLE BLAZED AND SCRIBED " X BT " BEARS N72 1/2°W, 23.6 FT  
A DOUBLE TRUNKED CEDAR DOUBLE BLAZED AND SCRIBED ON 11" DIA. EAST TRUNK " Y4 S17 CS BT " BEARS NORTH 24.2 FT.

Sketch of Monument, Accessories, and General Area



Location & Comments

CORNER LIES IN A NORTH-SOUTH CUT LINE. NEAR THE WEST EDGE OF A SMALL BENCH. TREE'S TO THE EAST ARE TARGETED FOR HARVEST IN NEAR FUTURE

Comp. Declin. 18 ° E  
Agency DCSO  
Party Chief RANDALL W SMITH  
Notekeeper Randall W Smith  
Witnesses STEPHEN J. FLAISE

Address

Surveyor's Seal

REGISTERED PROFESSIONAL LAND SURVEYOR

Signature of Larry E. Monrean

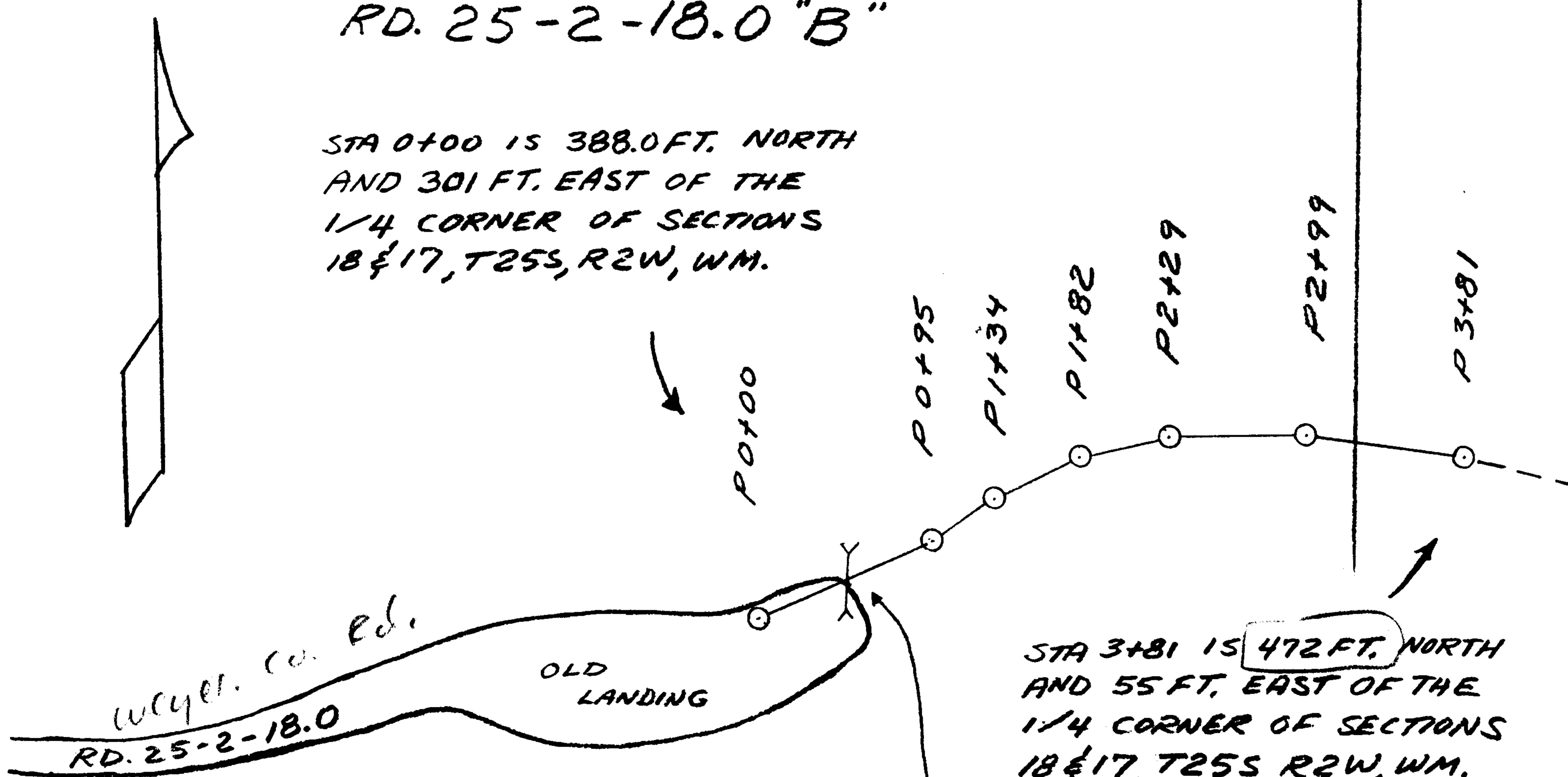
OREGON  
JULY 13, 1979  
LARRY E. MONREAN  
#1830

APPROX 10yr OLD REPROD

# CONSTRUCTION PLAT

## RD. 25-2-18.0 "B"

STA 0+00 IS 388.0 FT. NORTH  
AND 301 FT. EAST OF THE  
1/4 CORNER OF SECTIONS  
18 & 17, T25S, R2W, WM.



GRADES

STA TO	STA	% GRADE
P0+00	P3+81	+15.5

SCALE  
1" = 100'

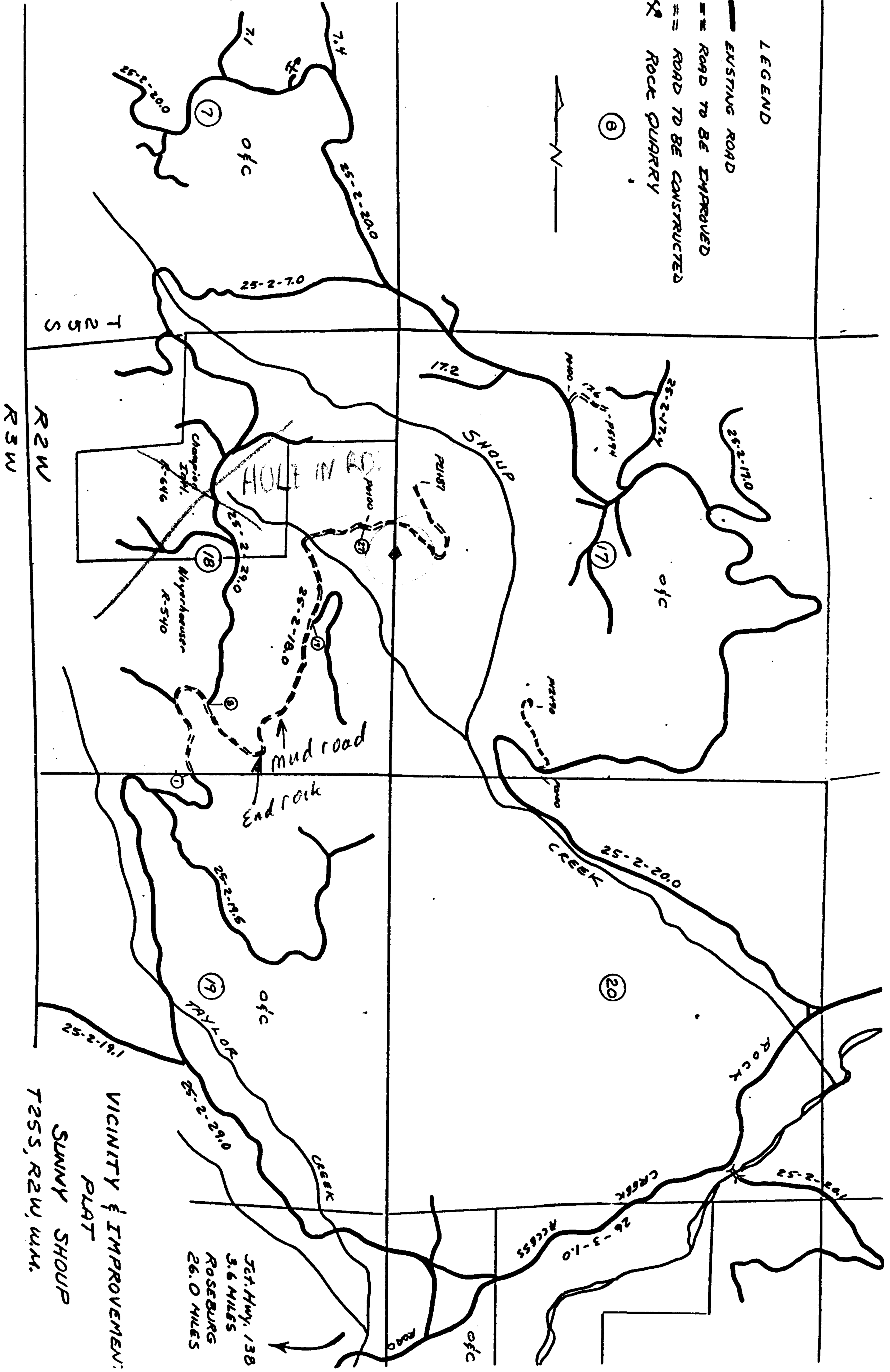
SE 1/4 NE 1/4  
SEC. 18  
WEYER. CO.  
R-540

SW 1/4 NW 1/4  
SEC. 17  
O & C

SEC. 18, T25S, R2W, WM.

CS 62/63

- LEGEND
- EXISTING ROAD
  - - - ROAD TO BE IMPROVED
  - == ROAD TO BE CONSTRUCTED
  - X<sup>o</sup> ROCK QUARRY



VICINITY & IMPROVEMENT:  
 PLAT  
 SUNNY SHOUP  
 T 25 S, R 2 W, W.M.

Jct. Hwy. 138  
 3.6 MILES  
 ROSEBURG  
 26.0 MILES

CS62/62-1