

GOVERNMENT CORNER RESTORATION FORM

Township 30S Range 6W Sec. 25 County DOUGLAS

State OREGON Date 1/6/89 No. _____

Corner Designation

1/4
S25 | ONLY

- Condition Report Only
- Not Found
- Renewed
- Unrecorded
- Surveyed In
- Referenced Out

Previous Renewals #195 #219 (T30-6) #242,268 # (T30-5)

MONUMENT DETAIL

Monument(s) Found: (Condition and Source)

1 1/4 IN. O.D. IRON PIPE, PROTRUDING
1 IN. ABOVE GROUND, TOP IS BENT
0.4 FT. SOUTHWEST OF A PLUMB POSITION
BRASS CAP WAS MOWED OFF IT IS FOUND LOOSE
ON TOP OF GROUND ALONG SIDE IRON PIPE.
(PER REN #195)

COUNTY SURVEYORS OFFICE
T 30 S

1/4 S25 | RESET
R 1976
6 R
W 5
W
1969

Accessories Found:
MEASUREMENTS TAKEN TO PLUMB POSITION OF IRON PIPE

12" NOW 13" DIA W. OAK WITH A FULLY HEALED SINGLE BLAZE
BEARS S24°W, 127.4 FT (REC. S26°W, 127.4 FT). PER REN #195

10" NOW 15" DIA W. OAK WITH A FULLY HEALED SINGLE BLAZE
BEARS S80°W, 262.6 FT (REC. S82°W, 262.6 FT) PER REN #195

A 1969 OLDSO 1 1/4" I.P. (1/4 COR. SEC. 30 T30S R5W ONLY)
BEAR SOUTH 99.4 FT (AGREES WELL WITH RECORD).
(A NEW OLDSO BECLIP IS NOW AT POSITION OF FOUND 1 1/4" I.P.)

#312 T30-5x
#241 T30-6x

RENEWAL

Monument Set (Procedure and Description)

PREVIOUSLY DESCRIBED 1 1/4" O.D. IRON PIPE PER REN #195 IS REFERENCED TO PLUMBER POSITION AND REMOVED, IRON PIPE MEASURES 36 IN. LONG. A NEW ALSO 2 3/8" DIA BRASS CAP ON A 30 1/2" LONG 1 1/4" O.D. IRON PIPE IS SET AND PROTRUDES 1 FT ABOVE GROUND. BC/IP IS SET AT REFERENCED POSITION.

Monument Detail

DOUGLAS COUNTY SURVEYORS

T 30 S

1/4
525 | R
R | 5
6 | W
W

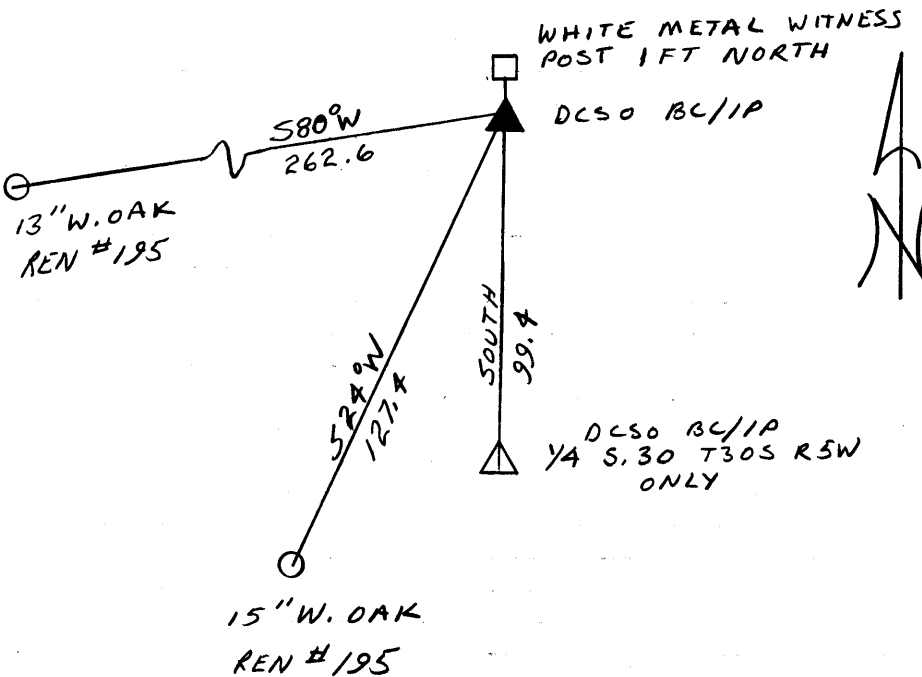
1989

OFFICE

New Accessories

A WHITE METAL WITNESS POST IS SET 1 FT NORTH OF BC/IP.

Sketch of Monument, Accessories, and General Area



Location & Comments

CORNER LIES IN OPEN FIELD

Comp. Declin. 18 1/2° E
Agency DCSO
Party Chief RANDALL W SMITH
Notekeeper STEPHEN J FLAUSE
Witnesses

Randall W Smith

Address

Surveyor's Seal

REGISTERED
PROFESSIONAL
LAND SURVEYOR

Larry E. Monrean

OREGON
JULY 13, 1979
LARRY E. MONREAN
#1830