

GOVERNMENT CORNER RESTORATION FORM

Township 26S Range 6W Sec. 26 County DOUGLAS

State OR Date 2/8/89 No. \_\_\_\_\_

Corner Designation WIT. COR. TO

S.S.E.  
OLC #47

- \_\_\_\_\_ Condition Report Only
- \_\_\_\_\_ Not Found
- Renewed
- \_\_\_\_\_ Unrecorded
- \_\_\_\_\_ Surveyed In
- \_\_\_\_\_ Referenced Out

Previous Renewals #141

MONUMENT DETAIL

Monument(s) Found: (Condition and Source)

A 2 1/2" DIA. DCSO BRASS CAP ON  
A 1 3/8" O.D. IRON PIPE, PROTRUDING  
12 IN. ABOVE GROUND. (PER REN #141)  
(MONUMENT LEANS SLIGHTLY SOUTHWEST)

BROKEN DOWN AND DEAD OAK  
ORIGINAL CORNER TREE.

COUNTY SURVEYORS OFFICE

SSE	WC
OLC	10 E
47	

T26S  
R6W  
1964

Accessories Found:

BEARINGS AND DISTANCES TAKEN FROM 1964 DCSO BC/IP.  
28" NOW BROKEN DOWN AND DEAD OAK OF INDETERMINABLE  
SIZE WITH A ROTTED FACE, NO SCRIBING VISIBLE ON WEST TRUNK.  
BEARS EAST 10 FT. FROM WIT. COR. (1964 DCSO BC/IP.)  
AGREES WITH RECORD, TREE IS THE ORIGINAL CORNER TREE.

15" NOW 17" DIA. W. OAK WITH A FULLY HEALED SINGLE  
BLAZE, BEARS N 41° W, 41.6 FT (REC. N 41° W, 42.0 FT DIST.  
IS A SLOKE MEASUREMENT). PER REN #141.

15" NOW 17" DIA. W. OAK WITH A FULLY HEALED SINGLE  
BLAZE BEARS S 44° E, 15.2 FT (AGREES WITH REC.)  
PER REN #141

A 3" x 3" CHISELED CROSS ON A 4 FT x 5 FT x 2 1/2 FT  
ABOVE GROUND ROCK OUTCROP, BEARS N 57° E, 8.0 FT  
AGREES WITH RECORD. NOTE "X" IS IN MIDDLE OF  
ROCK ON THE WEST SIDE APPROX 8" BELOW TOP OF ROCK.  
PER REN #141

#1914

C.S. 62/61-5 C

RENEWAL

Monument Set (Procedure and Description)

Monument Detail

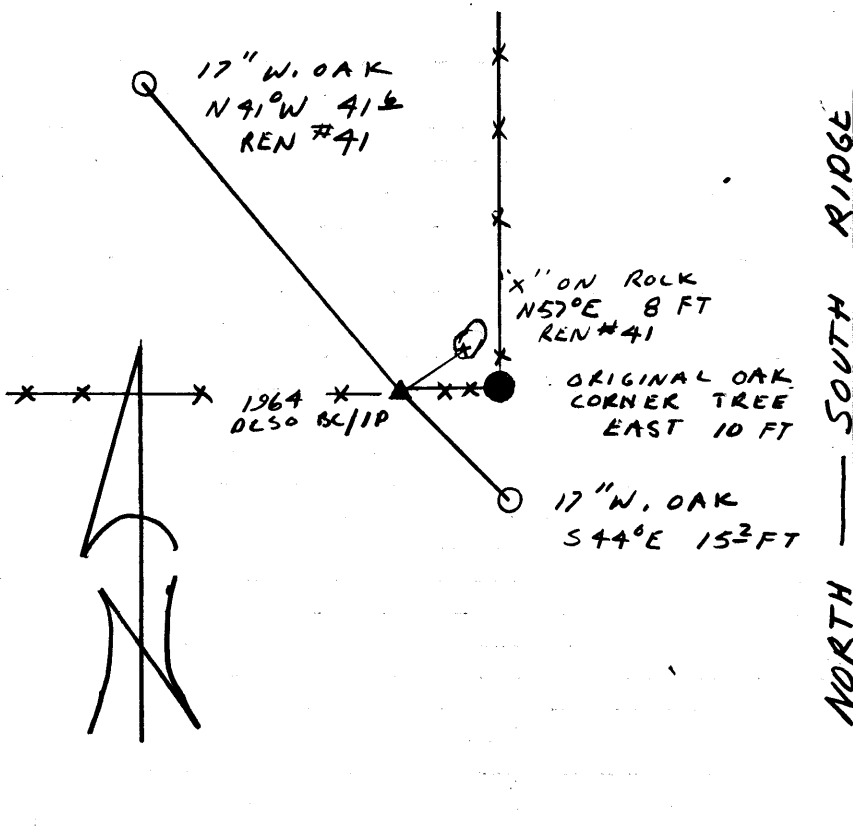
NONE

N/A

New Accessories

NONE

Sketch of Monument, Accessories, and General Area



Location & Comments

CORNER LIES NEAR BASE OF STEEP WESTERLY FACING RIDGE. FENCES RUN NORTH AND WEST FROM OLC CORNER.

Comp. Declin. 18° E  
 Agency DCSO  
 Party Chief RANDALL W SMITH  
 Notekeeper Randall W Smith  
 Witnesses STEPHEN J FLAUS

Address

Surveyor's Seal

REGISTERED  
 PROFESSIONAL  
 LAND SURVEYOR

*Larry E. Monrean*

OREGON  
 JULY 13, 1979  
 LARRY E. MONREAN  
 #1830