

GOVERNMENT CORNER RESTORATION FORM

Township 24S Range 5W Sec. 24

County DOUGLAS

APR 3 1989

State OREGON

Date 3/28/89

No. _____

DOUGLAS COUNTY SURVEYOR
DOUGLAS COUNTY, ORE.

Corner Designation

1/4 524
525

- _____ Condition Report Only
- _____ Not Found
- Renewed
- _____ Unrecorded
- _____ Surveyed In
- _____ Referenced Out

Previous Renewals #54

MONUMENT DETAIL

Monument(s) Found: (Condition and Source)

A 2" INCH DIAM. BRASS CAP MARKED AS AT RIGHT ON A 1 1/2 INCH O.D. IRON PIPE IS SEVERELY BENT TO NORTH WHERE IT PROTRUDES 12 INCHES FROM GROUND. FROM REN. #54 (WHEN MON. IS REFERENCED AND REMOVED IT IS FOUND THAT L.P. IS 36 INCHES LONG)

COUNTY SURVEYORS OFFICE

T24S R5W

1/4 524

525

1960

Accessories Found:

(CHECKED TO PLUMB POSITION OF FOUND MON)

NO CLEAR EVIDENCE OF THE ORIGINAL BEARING TREE IS FOUND.

EVIDENCE OF TWO BEARING TREES FROM RENEWAL #54 IS FOUND. A 10" W. OAK NOW A 16 INCH D.B.H. W. OAK WITH A FULLY HEALED SINGLE BLAZE BEARS S 67° W, 85 3/4 FT. DISTANT (RECORD S 67° W, 85 8/16 FT. (A SLOPE DISTANCE)). A 10" W. OAK NOW A DOUBLE TRUNKED W. OAK; THE WESTERLY TRUNK OF WHICH IS 16 INCHES D.B.H. AND HAS A FULLY HEALED DOUBLE BLAZE. CENTER OF ROOT CROWN OF DOUBLE TRUNKED OAK BEARS N 59° E, 89 2 FT. DISTANT (AS PER RECORD)

#1114

RENEWAL

Monument Set (Procedure and Description)

Monument Detail

PLUMB POSITION OF FOUND MONUMENT IS REFERENCED OUT. MONUMENT IS REMOVED AND IN THE REFERENCED POSITION IS ESTABLISHED A NEW MONUMENT WITH A 2 3/8 DIAM. BRASS CAP MARKED AS AT RIGHT ON A 1 3/8 INCH OD., 32 INCH LONG GALVANIZED IRON PIPE SET PROTRUDING 4 INCHES ABOVE GROUND.

DOUGLAS COUNTY SURVEYORS OFFICE

T 24 S

R 5 W

1/4 524

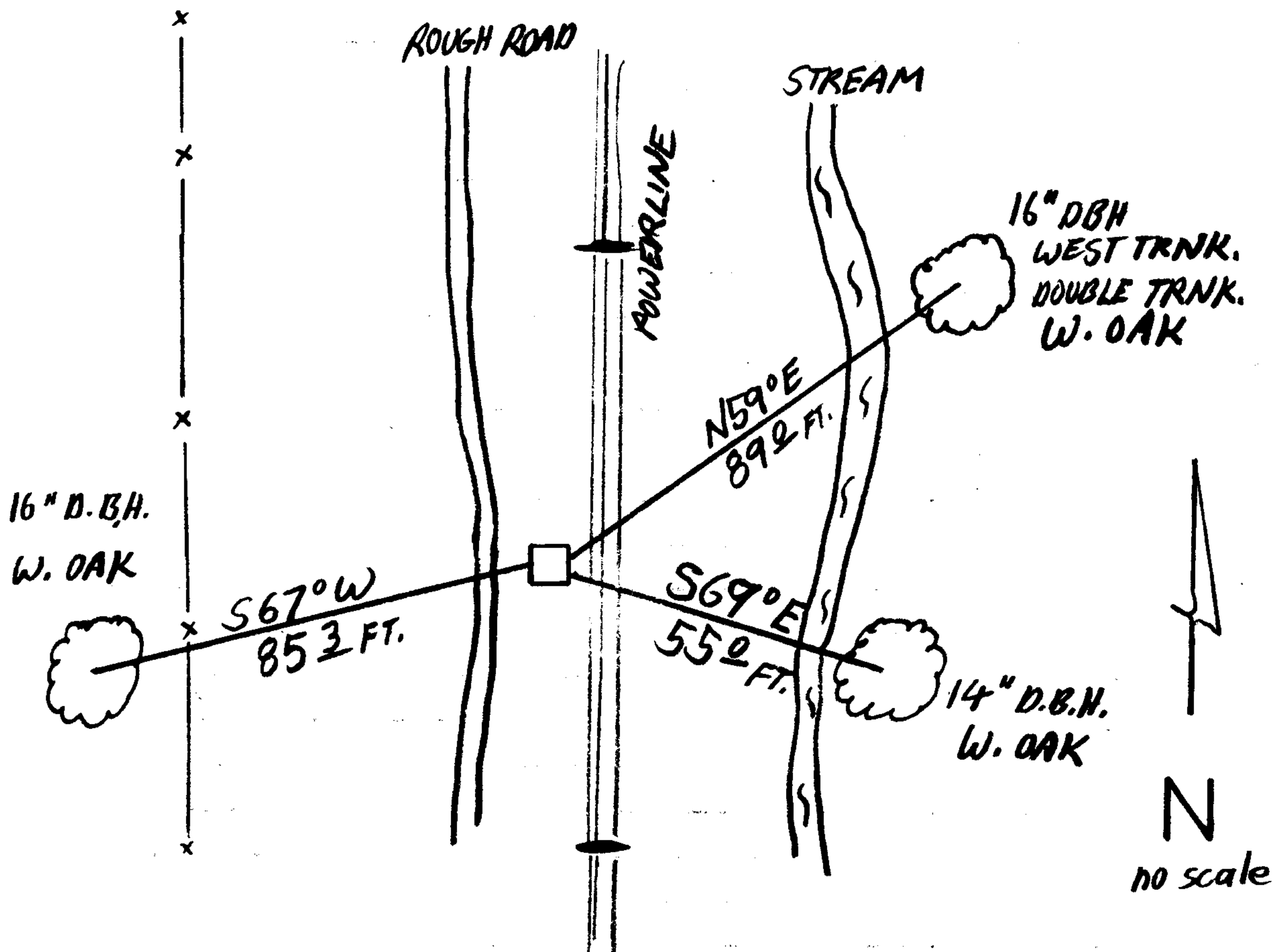
525

1989

New Accessories

A 14 INCH D.B.H. WHITE OAK DOUBLE BLAZED AND SCRIBED "1/4 525 CS BT" BEARS S69°E, 55° FEET DISTANT.

Sketch of Monument, Accessories, and General Area



Location & Comments

Comp. Declin. 18 1/2° E
Agency DCSO
Party Chief RW SMITH
Notekeeper Stephen John Flouse
Witnesses SW FLAUSE

Address

Surveyor's Seal
REGISTERED
PROFESSIONAL
LAND SURVEYOR

Jerry L. Monrean

OREGON
JULY 13, 1979
LARRY E. MONREAN
#1830

OREGON CORNER RESTORATION FORM

Section 24 Township 24S Range 5W

County Douglas Date Sept. 9, '88

Corner Designation

$\frac{1}{4S} \frac{24}{25}$

- Condition Report Only
- Not Found
- Renewed
- Unrecorded
- Surveyed In
- Referenced Out

Previous Renewals/Surveys, etc.

See No. 54, Corner Renewal File.

Monument(s) & Accessories Found: (Condition and Source)

(1960)
C.S. Brass Cap w/ Pipe Badly Bent, Needs Replacement.

Monument Detail

Sketch

Monument Set (Procedures and Description)

EXISTING ~~new~~ Accessories:

20" W. Oak BT bears S67°W, 85.8 ft.

18" W. Oak BT bears N59°E, 89.0 ft.

Location & Comments

Surveyor's Seal

200 Ft. NE of
Farm Lane, Rocked.
Tag on Fence Post.

Compass Declination

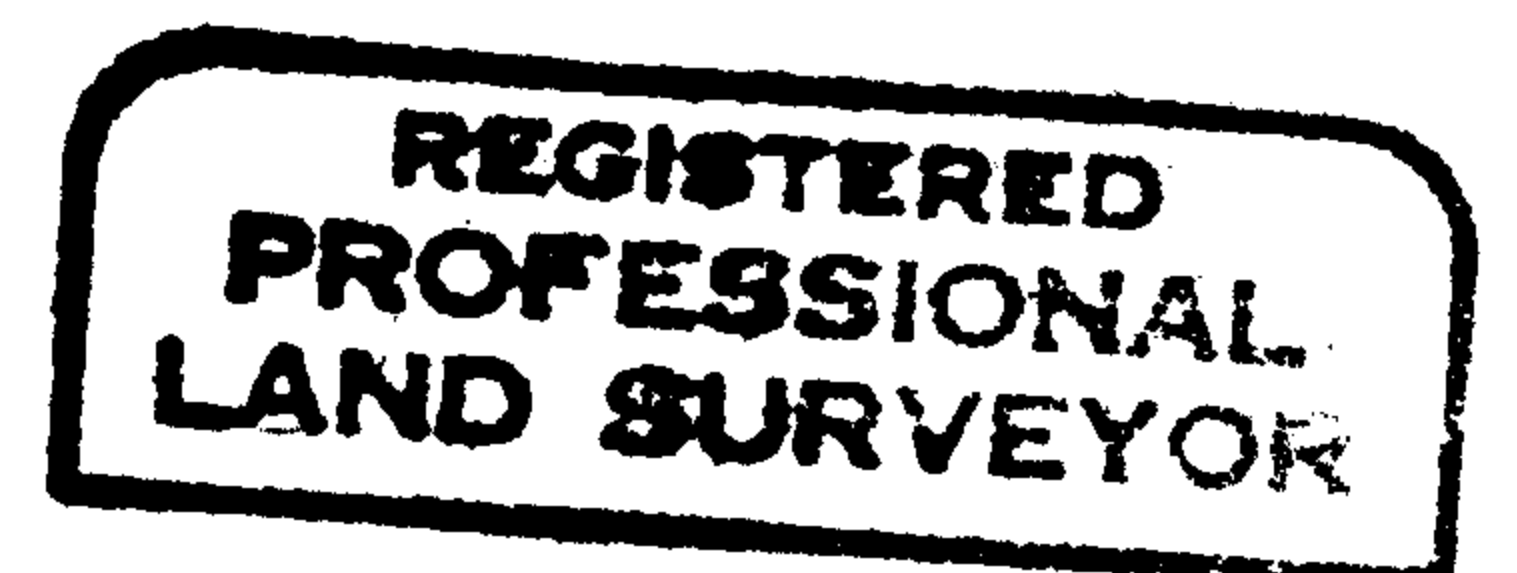
Firm/Agency

Address

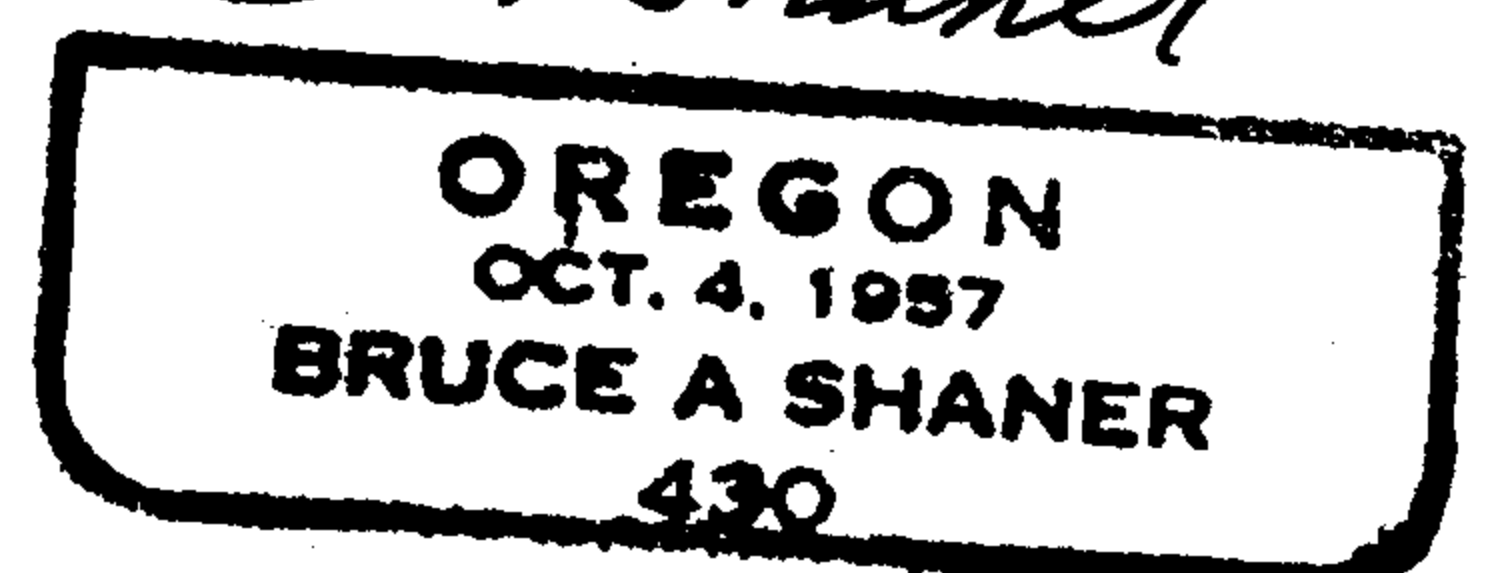
Party Chief

Notes

Witness



B A Shaner



62/61