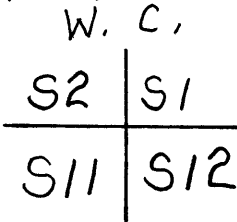


GOVERNMENT CORNER RESTORATION FORM

Township 31S Range 5W Sec. 1 County DOUGLAS

State OR Date 9/26/88 No. _____

Corner Designation



- Condition Report Only
- Not Found
- Renewed
- Unrecorded
- Surveyed In
- Referenced Out

Previous Renewals #3, #6, #105, 1973 BLM D. RESURVEY, #117 MONUMENT DETAIL

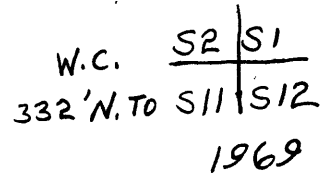
Monument(s) Found: (Condition and Source)

POSITION OF SECTION CORNER AS DETERMINED BY BYRON (REN #105) AND BLM IN 1973, WERE NOT LOOKED FOR. SECTION CORNER FALLS ON OR NEAR NORTH BOUND LANES OF I-5.

COUNTY SURVEYORS OFFICE
T31S R5W

WITNESS CORNER:

FOUND A 1969 DCSD BRASS CAP ON A IRON PIPE MARKED AS AT RIGHT. (SEE DCSD CORNER RENEWAL RECORDS #117, FOR WIT. CORNER BEARING TREE AND BEARING OBJECT INFORMATION)



Accessories Found:

BEARINGS AND DISTANCES TAKEN FROM A CALCULATED POINT OF SECTION CORNER (SEE BACKSIDE EXPLANATION OF CALCULATED POINT)

TRUE BEARINGS

12" NW 15" DIA. T. CEDAR WITH A PARTIALLY HEALED SINGLE BLAZE, SCRIBING VISIBLE "SR5WS1BT" BEARS N 17 1/4° W, 243.5 FT (RECORD N 19° W, 244.8 FT). PER 1973 BLM D. RESURVEY.

21" NW 24" DIA. I CEDAR WITH A PARTIALLY HEALED SINGLE BLAZE, SCRIBING VISIBLE "31S R5W SR BT" BEARS N 41 1/2° E, 199.9 FT (RECORD N 40° E, 197.3 FT). PER 1973 BLM D. RESURVEY.

#120 X

RENEWAL

Monument Set (Procedure and Description)

Monument Detail

N/A

CONTROL POINT PTS-18 WAS BACKSIGHTED FROM WIT. CORNER. BEARING TREES FROM 1973 BLM RESURVEY AND A 1" O.D. IRON PIPE (N $\frac{1}{4}$ COR. BETWEEN 11 AND 12) FROM M22-10 ARE TIED. A CHECK OF THE GRID BEARING BETWEEN N $\frac{1}{4}$ COR. AND WIT. COR. AGREES WELL WITH BEARING ON MAP IN CS. FILE NO. 54/76. A CALCULATED CORNER POSITION WAS DETERMINED BY PROJECTING A LINE BEYOND WIT. COR. ON SAME BEARING FOUND BETWEEN WIT. COR. AND N $\frac{1}{4}$ COR (N058 $^{\circ}$ 35'E) A DISTANCE OF 332.09 FEET (CS. 54/76)

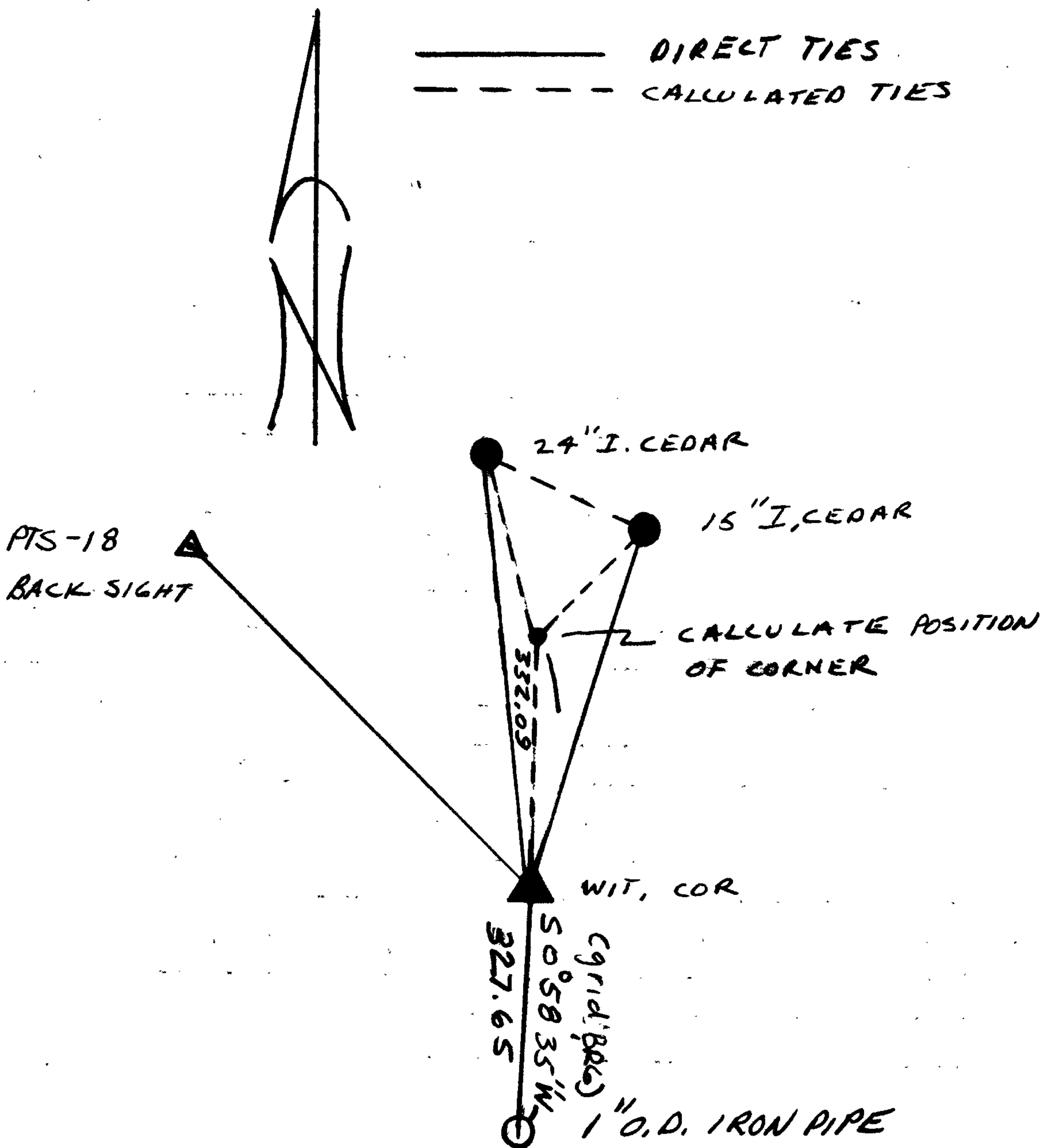
A SECTION CORNER POSITION OF TRUE NORTH, 332.0 FEET FROM WIT. COR. AND AN INTERSECTION OF TRUE BEARINGS FROM BLM BEARING TREES, SHOWED THE MOST AGREEMENT WITH THE 1973 BLM POSITION OF SECTION CORNER. THIS POSITION OF SECTION CORNER SEEMS TO BE IN DISAGREEMENT WITH POSITION DETERMINED FROM MAP IN CS. FILE NO. 54/76

New Accessories

N/A

Sketch of Monument, Accessories, and General Area

Location & Comments



Comp. Declin. 18 $\frac{1}{2}$ $^{\circ}$ E
 Agency DCSO
 Party Chief RANDALL W. SMITH
 Notekeeper Randall W. Smith
 Witnesses STEPHEN J. WAHLFLAUSE

Address

Surveyor's Seal

REGISTERED
 PROFESSIONAL
 LAND SURVEYOR

Larry E. Monrean

OREGON
 JULY 13, 1979
 LARRY E. MONREAN
 #1830

OFFICE OF THE
DOUGLAS COUNTY SURVEYOR

Station: W.C. SW COR S 1 T31 S, R 5W , Sec 11

Set By (Agency): DCSO

Date Set: 1969

Recovered By RWS, SJF

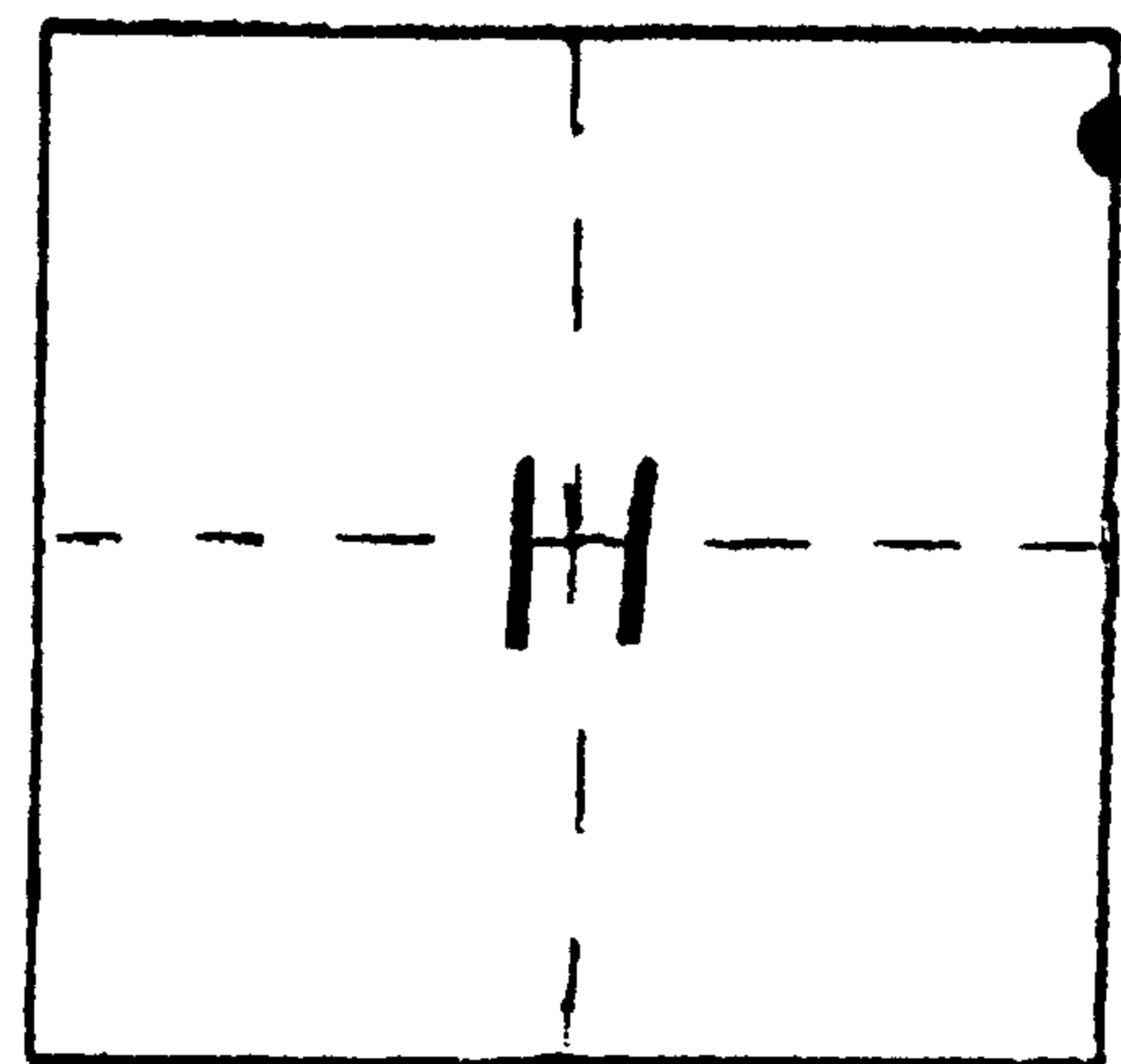
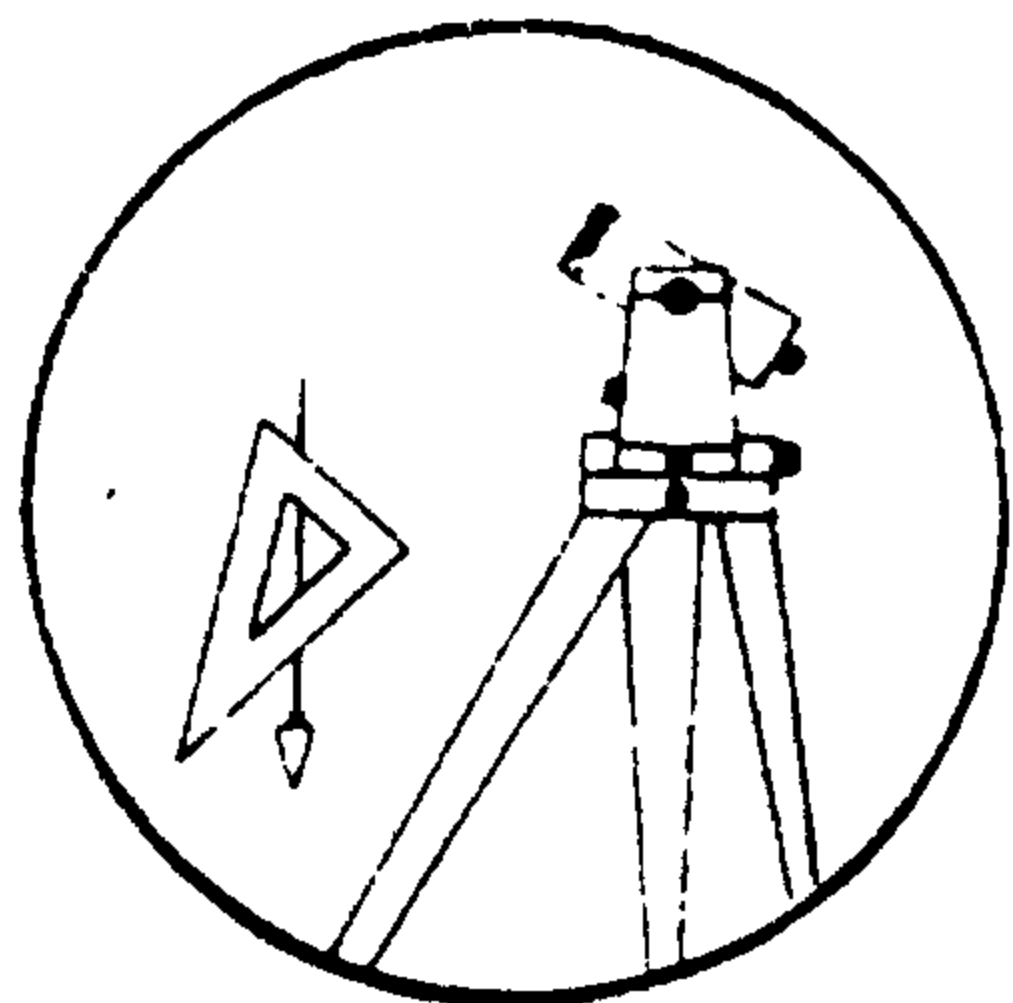
Date Recovered 8/21/85

Recovered By _____

Date Recovered _____

Recovered By _____

Date Recovered _____



VERTICAL CONTROL

Elevation: _____ NGS Line # _____ USGS Line # _____ OSHD Line # _____

Precision: _____ Agency: _____ Proj. # _____ Date: _____

HORIZONTAL CONTROL

South Zone State Plane Coordinates: Y(Northing) 460,355.32 X(Easting) 1,264,367.39

Precision: 1/25,000 Agency: DCSO Proj. # 2013 Date: 1985

Approximate Geographic Position: Latitude 42 53' 48" Longitude 123 14' 45"

DESCRIPTION and TO REACH

SKETCH

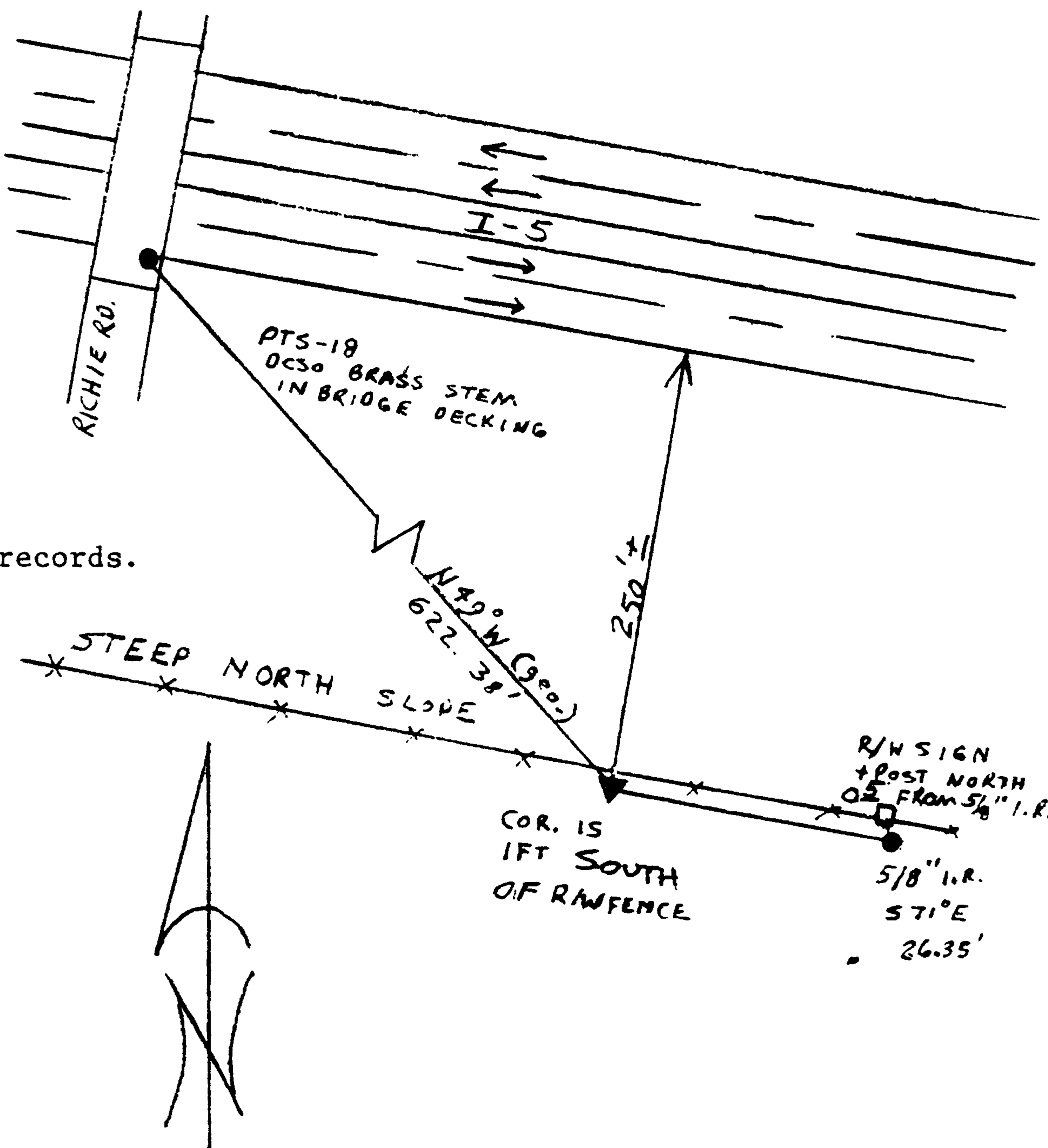
DESCRIPTION:

A DCSO disk on an I.P. stamped "T31S, R5W, W.C. 332'N. to S2 1 S11 S12 1969" protrudes 6" above ground.

TO REACH:

From the Richie Rd. (Canyon Crk. Exit #95) overpass crossing of I-5 in T31S, R5W, Sec2, corner is approx. S49° E, 620 ft.

NOTE: See DCSO monument recovery records.



Reference Marks:

Note: For further information, contact the Douglas County Surveyor's Office, Room 205 Douglas County Justice Building, Roseburg, OR 97470. Phone 440-4278. Douglas County residents outside the Roseburg calling area, dial toll free 1-800-452-0991.