

GOVERNMENT CORNER RESTORATION FORM

Township 27S Range 3W Sec. 6 County DOUGLAS

State OR Date 9/12/88 No. _____

Corner Designation

1/4 S1 | S6

- Condition Report Only
- Not Found
- Renewed
- Unrecorded
- Surveyed In
- Referenced Out

Previous Renewals #96 T27-3 #113 T27-4

Monument(s) Found: (Condition and Source)

A 2 1/2" DIA BRASS CAP ON A 1 1/4"
O.D. IRON PIPE MEASURING 27"
LONG (PER REN #96) FOUND
LAYING LOSE ON TOP OF GROUND NEAR
POSITION OF CORNER

METAL FLANGES TO BRASS CAP / IRON
PIPE FOUND 6 IN BELOW GROUND.
BROKEN OFF METAL FENCE POST
FOUND ALONG NORTH EDGE OF
FLANGES.

COUNTY SURVEYORS OFFICE

T27S

1/4 S | S R
1 | 6 3
W

RAW

1964

Accessories Found:

9" NOW 17" DIA. TRUNK OF SOUTHEAST TREE IN A 45" DIA
CLUSTER OF W. OAKS, SE TRUNK HAS A FULLY HEALED
BLAZE AND A PARTIALLY HEALED PREVIOUSLY OPENED LOWER
BLAZE, NO SCRIBING VISIBLE, BEARS N 19° E, 437.6 FT.
(AGREES WELL WITH RECORD), ORIGINAL BT.

22" NOW 29" DIA. D. FIR WITH A FULLY HEALED SINGLE
BLAZE, BEARS N 6° W, 551.6 FT (RECORD N 6° W, 553.3 FT
IS TO CENTER OF TRUNK), PER REN. #96.

#154 T27-3
#150 T27-4

RENEWAL

Monument Set (Procedure and Description)

BRASS CAP IRON PIPE RESET
 AT PLUMB POSITION OF FOUND
 FLANGES SET FLUSH WITH GROUND
 THE MARKS "RESET 1988" ARE ADDED TO
 BRASS CAP.

Monument Detail

COUNTY SURVEYORS OFFICE

T27S

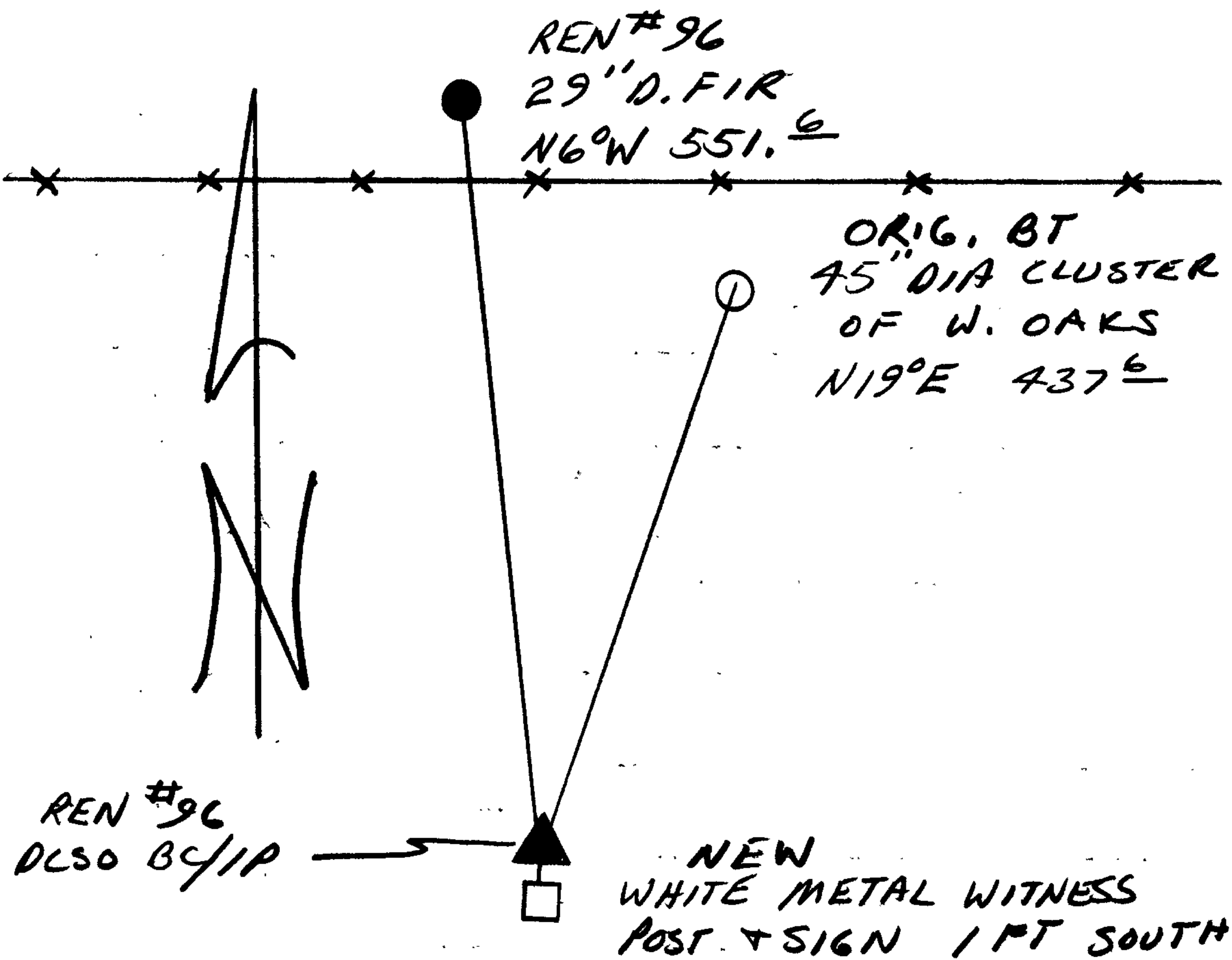
1/4 S 1 | S 6 R
 RESET 1988 3 W
 RAW
 1964

New Accessories

A WHITE METAL WITNESS POST & SIGN IS SET 1 FT SOUTH
 OF BC/IP.

Sketch of Monument, Accessories, and General Area

GRAVEL ROAD



Location & Comments

CORNER IS IN A FIELD,
 NO TREES WITHIN A REASONABLE
 DISTANCE.

Comp. Declin. 18 1/2° E
 Agency DCSO
 Party Chief RANDALL W SMITH
 Notekeeper Charles W. Smith
 Witnesses STEPHEN J FLAISE

Address

Surveyor's Seal

REGISTERED
 PROFESSIONAL
 LAND SURVEYOR

James T. Monrean

OREGON
 JULY 13, 1979
 LARRY E. MONREAN
 #1830