

GOVERNMENT CORNER RESTORATION FORM

Township 26S Range 5W Sec. 18 County DOUGLAS

State OR Date 8/3/88 No. \_\_\_\_\_

Corner Designation

S.E.  
COR.  
DLC #46

- Condition Report Only
- Not Found
- Renewed
- Unrecorded
- Surveyed In
- Referenced Out

Previous Renewals #100

Monument(s) Found: (Condition and Source)

A 2 1/2" DIA. DCSSO BRASS CAP ON A  
1 1/2" O.D. IRON PIPE PROTRUDES  
8 IN ABOVE GROUND. BC/IP LEANS  
0.3 FT WEST. PER REN #100

COUNTY SURVEYORS OFFICE

S E  
DLC 46

T 26 S

R 5 W

1964

Accessories Found:

MEASUREMENTS TAKEN TO PLUMB POSITION OF BC/IP  
12" NOW 22" DIA. DOWN AND ROTTING OAK WITH ROTTED OUT BLAZE,  
NO SCRIBING VISIBLE. ROOT HOLE BEARS S 75° E, 55.7 FT (AGREES WITH  
RECORD) ORIG. BT

13" NOW 15" DIA. W. OAK WITH A FULLY HEALED SINGLE BLAZE  
BEARS N 80° W, 26.7 FT (AGREES WITH RECORD) PER REN #100

9" NOW 11" DIA. B. OAK WITH A FULLY HEALED DOUBLE BLAZE  
BEARS N 23° E, 16.2 FT (AGREES WITH RECORD) PER REN #100

#157 ✓

RENEWAL

Monument Set (Procedure and Description)

Monument Detail

NONE

1964 BC/HP. RETURNED TO PLUMB POSITION

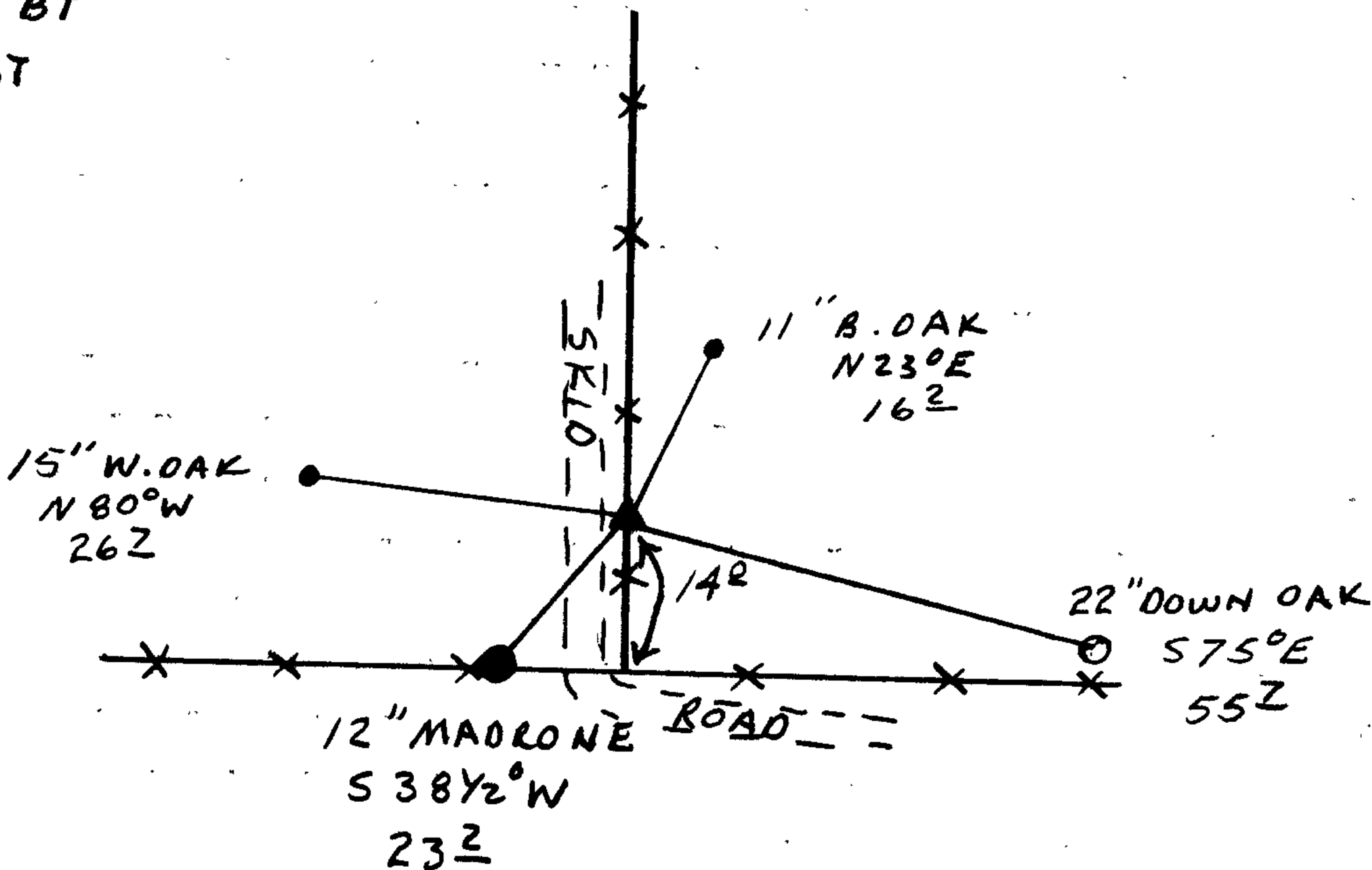
N/A

New Accessories

12" DIA. DOUBLE TRUNKED MADRONE, BARK SCRIBED "SE DCS 46 CS BT",  
 SCRIBING AND DIA. ARE ON EAST TRUNK, ROOT CROWN BEARS S 38 1/2° W,  
 23.2 FT

Sketch of Monument, Accessories, and General Area

- ▲ 1964 DCSO BC/HP
- BT'S PER REN #100
- ORIG. BT
- NEW BT



Location & Comments

CORNER LIES 14 FT NORTH  
 OF INTERSECTION OF AN E-W  
 AND NORTH RUNNING FENCE  
 LINES, IN NORTH FENCE LINE

Comp. Declin. 18 1/2° E  
 Agency DCSO  
 Party Chief RANDALL W. SMITH  
 Notekeeper Randall W. Smith  
 Witnesses STEPHEN J. FLAUSE

Address

Surveyor's Seal

REGISTERED  
 PROFESSIONAL  
 LAND SURVEYOR

*Larry E. Monrean*

OREGON  
 JULY 13, 1979  
 LARRY E. MONREAN  
 #1830