

GOVERNMENT CORNER RESTORATION FORM

Township 23S Range 5W Sec. 9 County DOUGLAS

State OR Date 5/4/88 No. _____

Corner Designation

S9	S10
S16	S15

Condition Report Only
 Not Found
 Renewed
 Unrecorded
 Surveyed In
 Referenced Out

Previous Renewals #19, #63, #122

MONUMENT DETAIL

Monument(s) Found: (Condition and Source)

AREA AROUND CORNERS POSITION, HAS BEEN RECENTLY EXCAVATED. A GARAGE IS TO BE LOCATED AT THE CORNER POSITION IN NEAR FUTURE.

DCSO 2 1/2" DIA. BRASS CAP ON A 1 1/2" DIA IRON PIPE WAS FOUND OUT OF GROUND IN NORTH - SOUTH FENCE LINE NEAR CORNER. (PER REN #63)

A 3/4" I.R. PROTRUDING 8 IN. ABOVE GROUND, TOP BENT 1 IN. NORTH (PER REN #19)

A 5/8" I.R. PROTRUDING 1 IN. ABOVE GROUND RECENTLY SET BEARS WEST, 0.5 FT. OF A POINT CALCULATED FROM BT'S AND BO'S. POINT NOT SET (I.R. SET BY HE NORTH CRAFT).

N/A

Accessories Found:

BEARINGS AND DISTANCES TAKEN TO A CALCULATED POINT

- ① 14" NOW DOWN AND ROTTED, INDETERMINABLE SIZE OAK. NO SCARS, BLAZES OR SCRIBING FOUND. BEARS S46°E, 83.2 FT (AGREES WITH RECORD) ORIG. BT
- ② 16" NOW POSSIBLE STUMP HOLE, BEARS N75°E, 71.9 FT (AGREES WITH RECORD) ORIG. BT
- ③ 24" NOW 29" DIA. B. OAK WITH A FULLY HEALED DOUBLE BLAZE BEARS N83°E, 15.5 FT (BRG. AND DIST. PER REN #63, BT SCRIBED IN REN #19)
- ④ D.FIR BEARING N65°W, 4.9 FT NOW GONE
- ⑤ 15" NOW 24" DIA. D.FIR WITH A FULLY HEALED DOUBLE BLAZE BEARS S18°W, 27.2 FT (AGREES WITH RECORD). (PER REN #63)
- ⑥ 7" NOW 16" DIA. D.FIR WITH A FULLY HEALED DOUBLE BLAZE BEARS S49°E, 47.9 FT (AGREES WITH RECORD) PER REN #63
- ⑦ 3/4" I.R. PROTRUDES 8 IN. ABOVE GROUND, TOP BENT 1 IN. NORTH, (BEARING AND DISTANCE TAKEN TO PLUMB POSITION) BEARS S50 3/4°E, 10.9 FT. (AGREES WITH RECORD) PER REN #19
- ⑧ 5/8" IRON ROD WITH A DCSO ALUM. CAP. STAMPED "B01 1987" FLUSH WITH GROUND, BEARS N34°E, 14.5 FT (AGREES WITH RECORD). PER REN #122
- ⑨ 5/8" IRON ROD WITH A DCSO ALUM. CAP STAMPED "B02 1987" FLUSH WITH GROUND, BEARS S47 1/2°W, 60.5 FT (RECORD S47 1/2°W, 64.5; DISTANCE WAS IN ERROR). PER REN #122
- ⑩ 5/8" IRON ROD WITH ALUM. CAP BEARING N37°W, 54.2 FT NOT FOUND, APPROX. 2 1/2 FT OF NEW DIRT AND GRAVEL AT THIS POSITION. PER REN #122

#244

C.S. File No. 62/52.15

C

RENEWAL

Monument Set (Procedure and Description)

Monument Detail

NONE

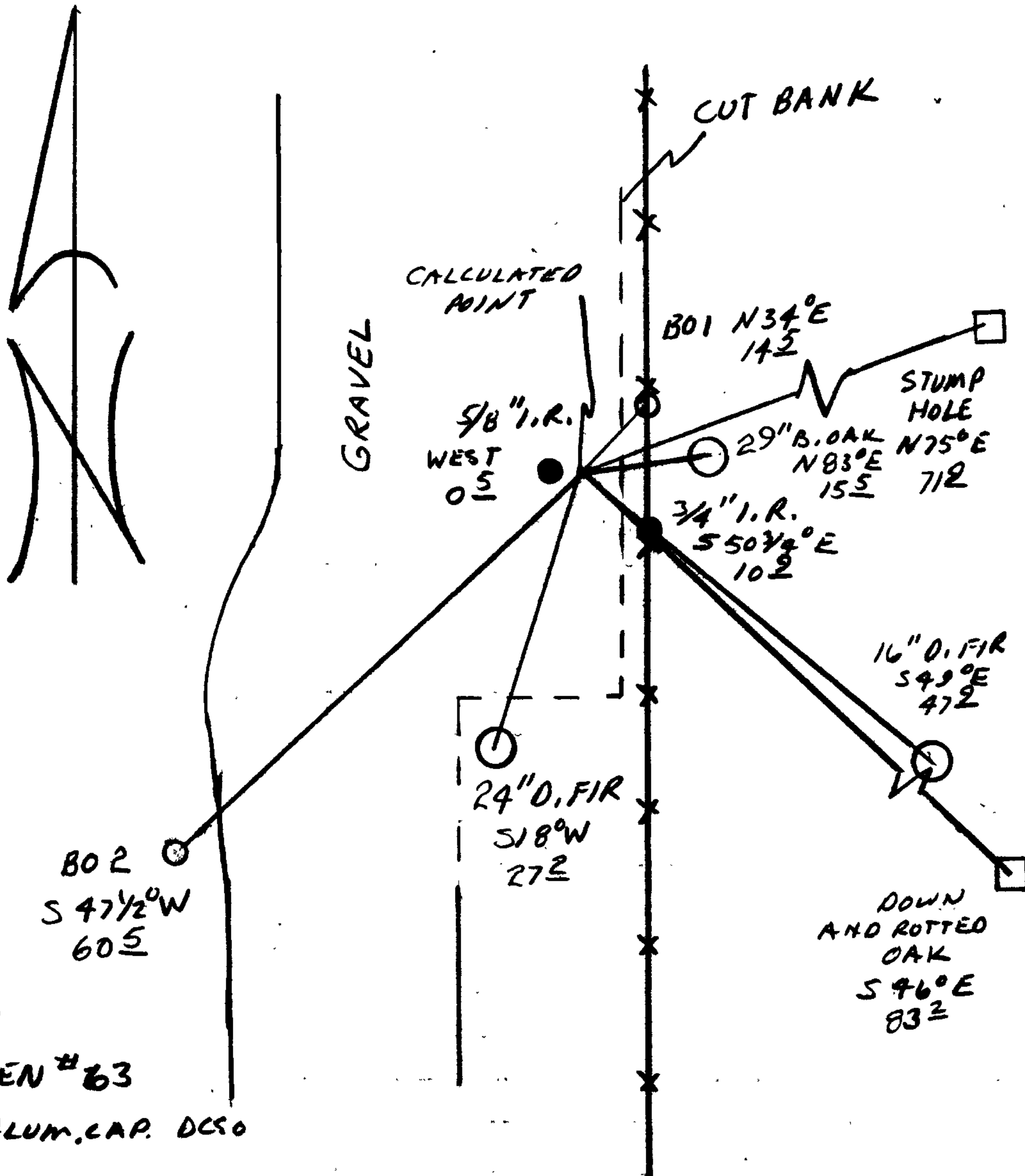
N/A

New Accessories

NONE

Sketch of Monument, Accessories, and General Area

Location & Comments



CORNER LIES APPROX. 150 FT
 NORTHEAST OF HOUSE AND
 8 1/2 FT WEST OF A NORTH-SOUTH
 FENCE LINE. IN NEAR FUTURE
 A GARAGE IS TO BE LOCATED
 AT CORNER POSITION.

Comp. Declin. 18° E
 Agency DCSO
 Party Chief RANDALL W. SMITH
 Notekeeper Randall W. Smith
 Witnesses STEPHEN J. FLAUSE

Address

Surveyor's Seal

REGISTERED
 PROFESSIONAL
 LAND SURVEYOR

Larry E. Monrean

OREGON
 JULY 13, 1979
 LARRY E. MONREAN
 #1830