

GOVERNMENT CORNER RESTORATION FORM

Township 33S Range 6W Sec. 4 County DOUGLAS

State OR Date 4/6/88 No. _____

Corner Designation

1/4 ONLY
S4

- Condition Report Only
- Not Found
- Renewed
- Unrecorded
- Surveyed In
- Referenced Out

Previous Renewals 3, 6, 17, 53

Monument(s) Found: (Condition and Source)

A 1" I.D. X 32" LONG IRON PIPE WITH A DCSSO BRASS CAP, BENT AND LAYING HORIZONTAL ON TOP OF GROUND, OUT OF POSITION, SET AS WEST WITNESS CORNER PER REN #53, (C.B.C./I.P. PULLED OUT OF GROUND BY RECENT CAT WORK).

A 1" I.P. FLUSH WITH GROUND, SET BY WENDEROTH AS SOUTH WIT. COR. PER REN #17

Accessories Found:

BT'S AND BO'S TO WEST WIT. COR.

DOUGLAS COUNTY SURVEYORS

T33S
EAST

W.C. TO COR,

1/4 S4 70.0
FT

ONLY

R6W

1986

14" NOW 29" DIA. ASH WITH A DOUBLE ROTTED OUT BLAZE FACING 1/4 COR POSITION AS PER REN #3, TREE ALSO IS SOUTHWEST BT TO WEST WIT. COR., WRONGLY IDENTIFIED AS A MAPLE, WITH A DOUBLE PARTIALLY HEALED BLAZE, SCRIBING VISIBLE FACING POSITION OF WENDEROTH WEST WIT. COR. PER REN #17, BEARING TREE BEARS S 21 3/4° E, 29.9 FT FROM POSITION OF WEST WIT. COR. AS ESTABLISHED IN REN #53 (AGREES WITH RECORD).

S 1/4 S 33 T 32S R 6W (DCSSO B.C./I.P.) BEARS WEST 149.2 FT (AGREES WITH RECORD)

5/8" I.P. (EAST WIT. COR. TO S 1/4 S 33 T 32S R 6W) WRONGLY NOTED ON SKETCH FOR REN #53 AS A 1" I.P. BEARS WEST 109.2 FT. (AGREES WITH RECORD)

SOUTH WIT. COR. A 1" I.P. SET FLUSH WITH GROUND PER REN #17 BEARS S 42 1/2° E, 103.8 FT (AGREES WITH RECORD)

BT'S TO SOUTH WITNESS CORNER PER REN #17 ARE ALIVE AND IN GOOD SHAPE (SEE REN #53).

RENEWAL

Monument Set (Procedure and Description)

WEST WIT. COR. ESTABLISHED IN REN. #53 IS REESTABLISHED FROM FOUND ACCESSORIES PER REN #53.

DCSO BC/IP PER REN #53 IS STRAIGHTENED AND RESET. DCSO BC/IP. PROTRUDES 6 IN ABOVE GROUND AND IS SURROUNDED BY A 18" DIA. 6 IN HIGH MOUND OF STONE. A WHITE STEEL GUARD POST IS SET 1 FT EAST OF WEST WIT. CORNER.

THE STAMPING "RESET 1988" IS ADDED TO BRASS CAP.

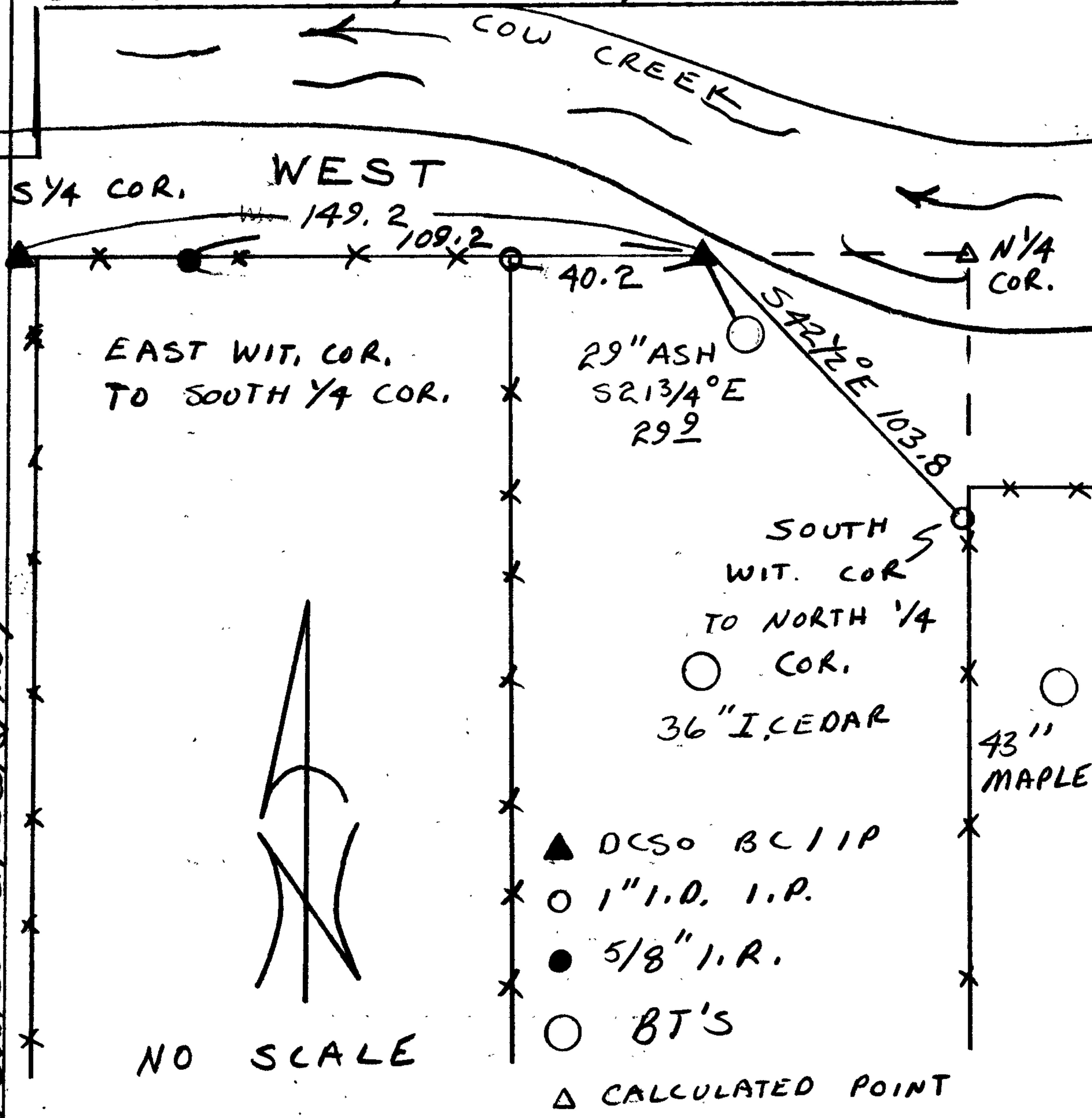
Monument Detail

DOUGLAS COUNTY SURVEYORS
T 33 S
EAST
W.C. TO COR.
1/4 S4 70.0 FT
ONLY
RGW
RESET 1988
1986

New Accessories

1" I.D. I.P. (4" BELOW GROUND WITH A 3/4" I.D. PROTRUDING 14" AND BENT TO GROUND, 3/4" IRON PIPE ALONG NORTH EDGE OF 1" IRON PIPE), BEARS WEST 40.2 FT. (SOURCE UNKNOWN)

Sketch of Monument, Accessories, and General Area



Location & Comments

Comp. Declin. 18° EAST
Agency DCSO
Party Chief RANDALL W SMITH
Notekeeper STEPHEN J FLAUSE
Witnesses _____

Address _____

Surveyor's Seal

REGISTERED
PROFESSIONAL
LAND SURVEYOR

July E. Monrean

OREGON
JULY 13, 1979
LARRY E. MONREAN
#1830