

GOVERNMENT CORNER RESTORATION FORM

Township 32S Range 5W Sec. 12 County DOUGLAS

State OR Date 6/6/86 No. _____

Corner Designation

CE 1/16
S.12

- Condition Report Only
- Not Found
- Renewed
- Unrecorded
- Surveyed In
- Referenced Out

Previous Renewals #196, M64-34

Monument(s) Found: (Condition and Source)

A BENT LOOSELY SET 5/8" I.R.
PROTRUDES 6" IN. ABOVE GRAVELED
SHOULDER OF UPPER COW CRK RD.
(PER M64-34).

ORIG. 1" I.P. PER M3-9 NOT FOUND

N/A

Accessories Found:

24" NOW 26" DIA. J. CEDAR WITH A PARTIALLY OPENED BLAZE "BT" VISIBLE
BEARS S66°W, 26.7 FT (REC. S66°W, 26.0 IS A FACE MEASUREMENT ORIG.,
S66°W, 27.2 PER REN #196) ORIG. BT PER M3-9.

10" NOW 10" DIA J. CEDAR WITH A PARTIALLY HEALED BLAZE SCRIBING
VISIBLE "1/16 CS BT" BEARS N60°W, 38.3 FT AGREES WITH REC.
ORIG. BT PER M3-9.

62/52-13

C.S. File No. 5730 C

#220 ✓

RENEWAL

Monument Set (Procedure and Description)

Monument Detail

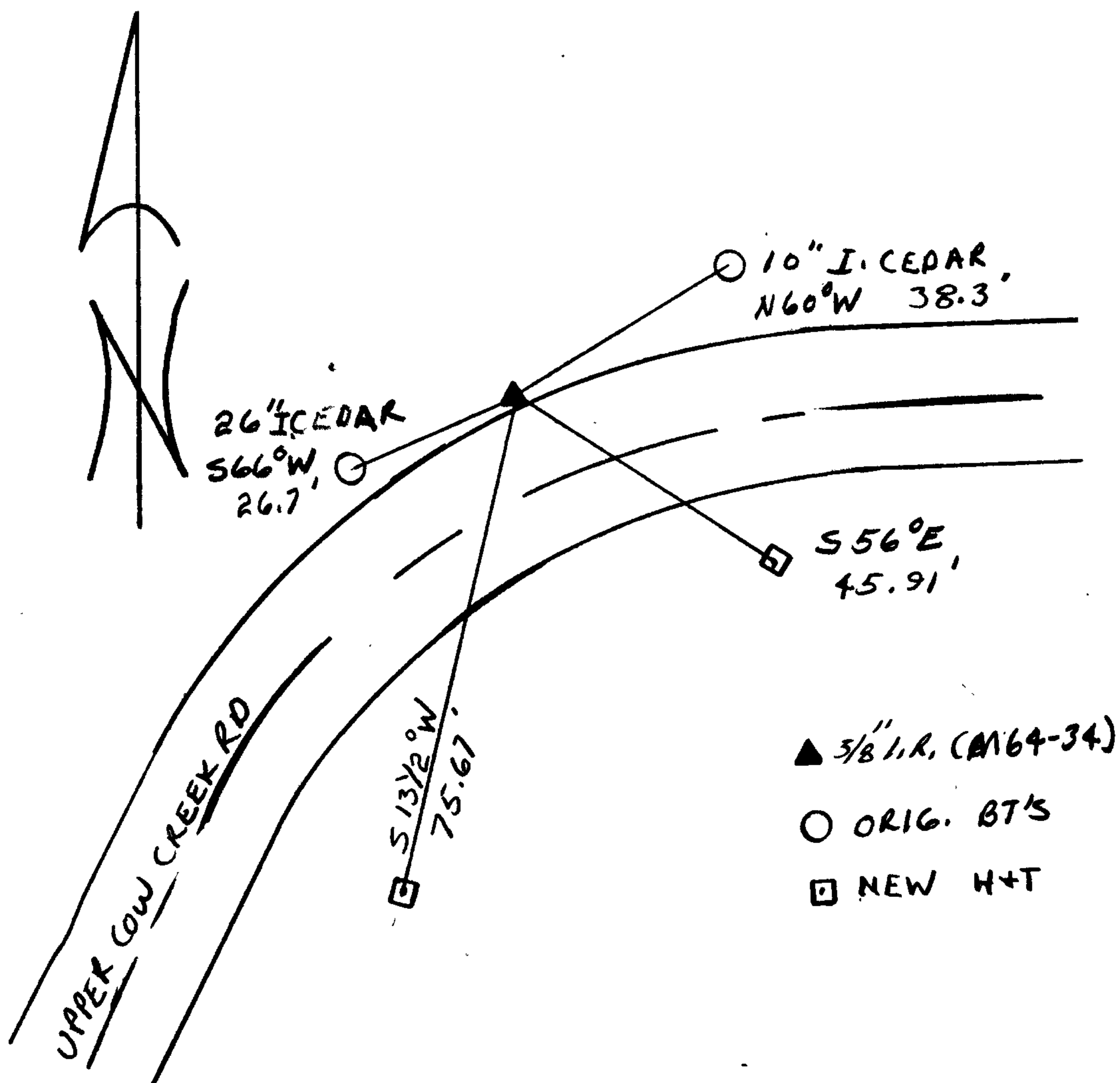
NONE

N/A

New Accessories

H+T BEARS S56°E, 45.91 FT.
H+T BEARS S13 1/2°W, 75.67 FT.

Sketch of Monument, Accessories, and General Area



Location & Comments

CORNER LIES ALONG EDGE OF UPPER COW CREEK RD. FUTURE ROAD WORK AND NEW ALIGNMENT WILL DESTROY COR. AND BT'S

Comp. Declin. 18 1/2° E
Agency DCSO
Party Chief RANDALL W. SMITH
Notekeeper Randall W. Smith
Witnesses STEPHEN J. FLAUSÉ

Address

Surveyor's Seal

REGISTERED
PROFESSIONAL
LAND SURVEYOR

Larry E. Monrean

OREGON
JULY 13, 1979
LARRY E. MONREAN
#1830

GOVERNMENT CORNER RESTORATION FORM

Township 32S Range 5W Sec. 12 County DOUGLAS

State OREGON Date 4/20/88 No. _____

Corner Designation

CE 1/16
S. 12

- Condition Report Only
- Not Found
- Renewed
- Unrecorded
- Surveyed In
- Referenced Out

MONUMENT DETAIL

Previous Renewals M3-9, #196, M64-34, #220

Monument(s) Found: (Condition and Source)

5/8" L.R. PER M64-34 WAS
NOT FOUND. PROBABLY LOST DURING
RECENT ROAD CONSTRUCTION.

N/A

Accessories Found:

NORTHWEST AND SOUTHWEST BEARING TREES ARE GONE
DUE TO RECENT ROAD CONSTRUCTION.

HUB AND TACK BEARS S56°E, 45.91 FT (AGREES WITH RECORD).
PER REN #220

HUB AND TACK BEARS S13 1/2°W, 75.67 FT (AGREES WITH RECORD).
PER REN #220

#224

RENEWAL

Monument Detail

Monument Set (Procedure and Description)

AT PREVIOUSLY REFERENCED POSITION (REN#220) A 8" LONG BOAT SPIKE WITH A 1 INCH DIA. TOP IS SET IN PAVEMENT. TOP IS STAMPED "CE 1/16" TOP OF BOAT SPIKE IS SET FLUSH WITH PAVEMENT.

CE
1/16

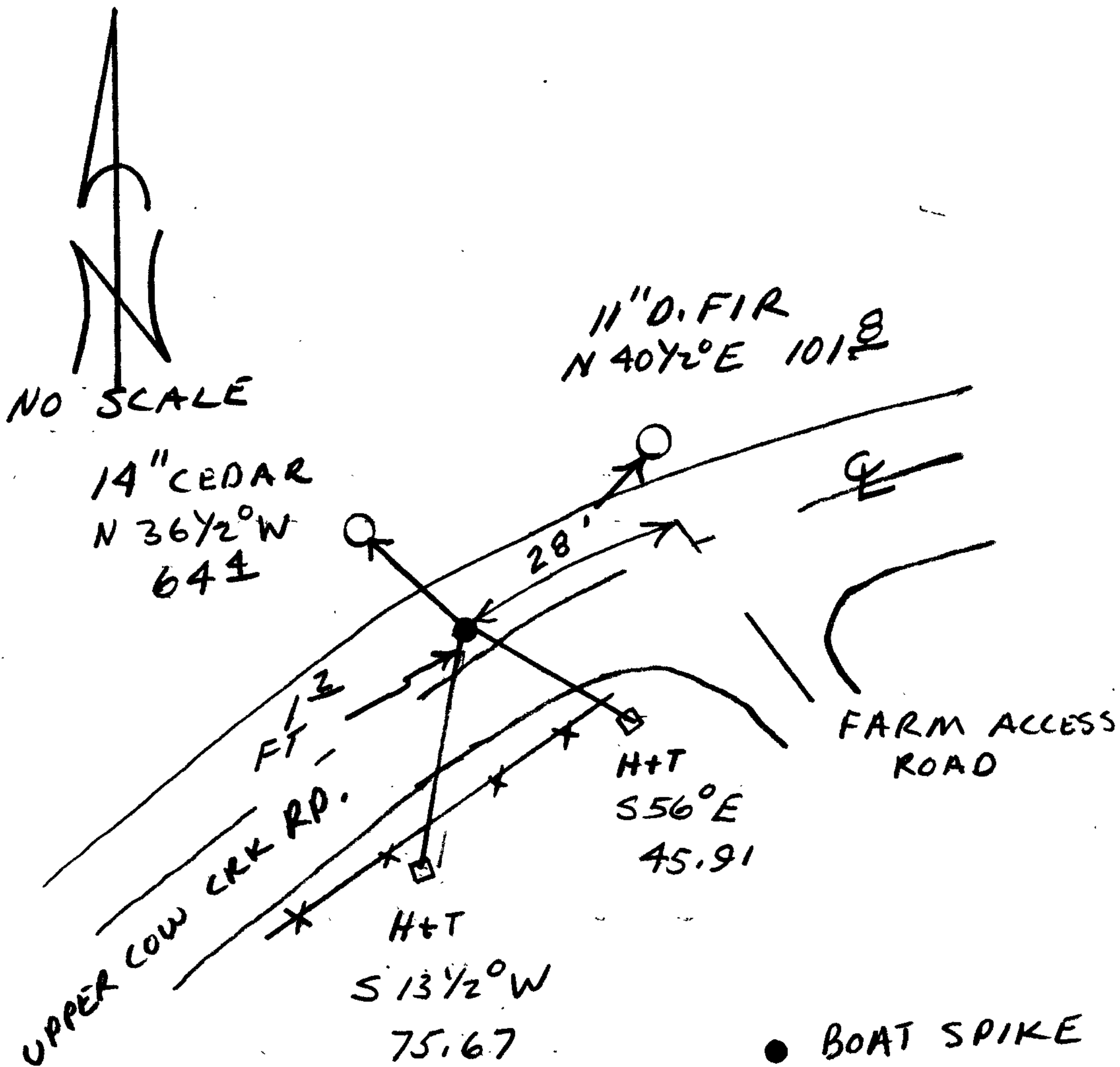
New Accessories

14" DIA CEDAR DOUBLE BLAZED AND SCRIBED "CE 1/16 S 12 CS BT" BEARS N 36 1/2° W, 64.4 FT.

11" DIA. DOUBLE TRUNKED D. FIR (DIA. TAKEN 1 1/2 FT ABOVE GROUND) DOUBLE BLAZE ON SOUTHWEST TRUNK AND SCRIBED "CE 1/16 S 12 CS BT" BEARS N 40 1/2° E, 101.8 FT.

A CENTER PUNCHED 3/4" SQUARE TOP SPIKE IN PAVEMENT BEARS S 80° E, 27.4 FT. PROBABLY SET BY DOUGLAS COUNTY ROAD DEPARTMENT.

Sketch of Monument, Accessories, and General Area



- BOAT SPIKE
- HUB AND TACK (REN#220)
- NEW BT'S

Location & Comments

Comp. Declin. 18° E
 Agency DCSO
 Party Chief RANDALL W SMITH
 Notekeeper STEPHEN J FLAUSE
 Witnesses

Address

Surveyor's Seal

REGISTERED
 PROFESSIONAL
 LAND SURVEYOR

Stephen J. Flause
 OREGON
 JULY 13, 1979
 LARRY E. MONREAN
 #1830