

GOVERNMENT CORNER RESTORATION FORM

Township 28S Range 6W Sec. 17 County DOUGLAS

State OREGON Date 7/28/88 No. _____

Corner Designation

1/4 S18 | S17

- Condition Report Only
- Not Found
- Renewed
- Unrecorded
- Surveyed In
- Referenced Out

Previous Renewals #125

MONUMENT DETAIL

Monument(s) Found: (Condition and Source)

FOUND STONE, SOURCE UNKNOWN,
THE TOP MEASURES 8" X 3" FIRMLY
SET AND PROTRUDES 6" ABOVE GROUND.
CHISEL MARKS ON TOP PER REN
#125 " + 1/4" FOUND.

N/A

A ROCK WAS NOTED AS FOUND AT
CORNER BY W.F. BRIGGS, COUNTY
SURVEYOR IN 1893. SEE FIELD BOOK 95
PAGE 22

Accessories Found:

28" NOW 49" DIA. W. OAK WITH A FULLY HEALED BLAZE
BEARS S 56 3/4° W, 203.9 FT (AGREES WITH RECORD) ORIG. BT

13" NOW 28" DIA. W. OAK WITH A PREVIOUSLY OPENED BLAZE
SCRIBING SEEN "BT" BEARS N 85° E, 169.6 FT (AGREES WITH
RECORD) ORIG. BT

13" NOW 18" DIA. W. OAK WITH A FULLY HEALED DOUBLE
BLAZE BEARS S 58° E, 60.4 FT (AGREES WITH RECORD)
PER REN #125

#182 X

RENEWAL

Monument Set (Procedure and Description)

CORNER STONE FIRMLY SET AND IN GOOD SHAPE NO BRASS CAP IRON PIPE MONUMENT SET.

WE PAINTED CORNER STONE ORANGE

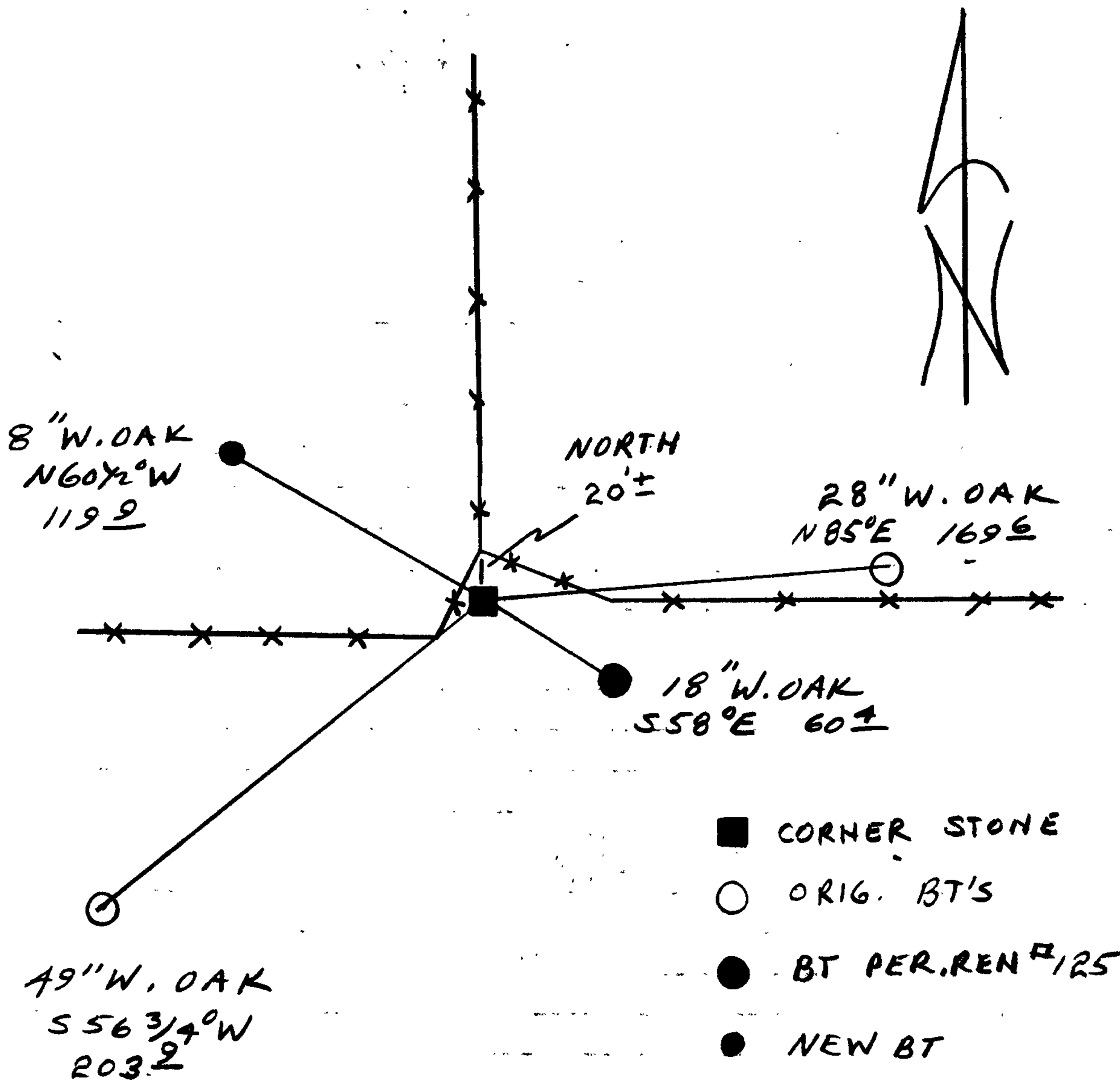
Monument Detail

N/A

New Accessories

8" W. OAK DOUBLE BLAZED AND SCRIBED "1/4 S 18 CS BT"
 BEARS N60 1/2° W, 119.9 FT.

Sketch of Monument, Accessories, and General Area



Location & Comments

Comp. Declin. 18° E
 Agency DCSO
 Party Chief RANDALL W SMITH
 Notekeeper Randall W Smith
 Witnesses STEPHEN J FLAUSE

Address

Surveyor's Seal

REGISTERED
 PROFESSIONAL
 LAND SURVEYOR

Larry E. Monrean

OREGON
 JULY 13, 1979
 LARRY E. MONREAN
 #1830