

GOVERNMENT CORNER RESTORATION FORM

Township 26S Range 3W Sec. 11 County DOUGLAS

State OR Date 5/18/88 No. _____

Corner Designation

1/4
S11 | S12

- _____ Condition Report Only
- _____ Not Found
- Renewed
- _____ Unrecorded
- _____ Surveyed In
- _____ Referenced Out

Previous Renewals #36, #212

MONUMENT DETAIL

Monument(s) Found: (Condition and Source)
A 2 IN O.D. ALUM. PIPE PROTRUDING
12 IN ABOVE GROUND. SOURCE
UNKNOWN

N/A

A POSITION AT RECORD (S44°W, 56.1 FT)
WAS OCCUPIED FROM A ~~RECORD~~ BT
(PER REN #36), NO OTHER EVIDENCE OF
RECORD FOUND TO PLACE MONUMENT AT
THIS POSITION.

Accessories Found:

36" NOW APPROX. 38" DIA. 3 1/2 FT HIGH ROTTED D. FIR STUMP,
NO BLAZES OR SCRIBING FOUND, BEARS S15°W, 7.6 FT AGREES
WITH RECORD PER REN #212 (ORIG. RECORD IS S10°W, 6.6 FT; DISTANCE
IS A POSSIBLE FACE MEASUREMENT). POSSIBLE ORIG. BT

15" NOW 23" DIA. CEDAR WITH A PARTIALLY HEALED UPPER AND
FULLY HEALED LOWER BLAZE, SCRIBING VISIBLE IN UPPER BLAZE
"S11CS" BEARS S59°W, 56.1 FT AGREES WITH RECORD (PER
REN #212. (RECORD FROM REN #36 75" FIR, S44°W, 56.1 FT).
NOTE TREE SPECIES IS A CEDAR IN BB. IRVING FIELD BOOK. PER REN #36
18" DIA. FIR PER REN #36 GONE POSSIBLE STUMP HOLE FOUND
BEARING S41 1/2°E, 29.7 FT (RECORD S28°E, 29.7 FT). PER REN #36
NOTE BEARINGS ON BT'S FROM REN #36 ARE NORTH OF THEIR
RECORD POSITION BY APPROX. THE SAME ANGLE.

12" NOW 36" DIA. S. PINE WITH AN AXE BARK BLAZE "N" AND A
SMALL HEALED LOWER BLAZE, BEARS N59°W, 53.8 FT (RECORD
N59°W, 53.5 FT IS A POSSIBLE FACE MEASUREMENT). SOURCE UNKNOWN

5" NOW 8" DIA. YEW WITH A PARTIALLY HEALED DOUBLE BLAZE, UPPER
BLAZE OPENED NO SCRIBING FOUND, LOWER BLAZE HAS A WEYERHEUSER
W NAIL SET IN IT, BEARS S16°E, 28.7 FT (AGREES WITH RECORD)
SOURCE UNKNOWN.

LAST TWO BT'S NOTED AS SOURCE UNKNOWN ARE POSSIBLE BT'S BY
MARION D. HALE, DATE 1946, SEE CS FILE NO. 53/115

C.S. File No. 62/52-6

#248 x

RENEWAL

Monument Set (Procedure and Description)

Monument Detail

NONE

N/A

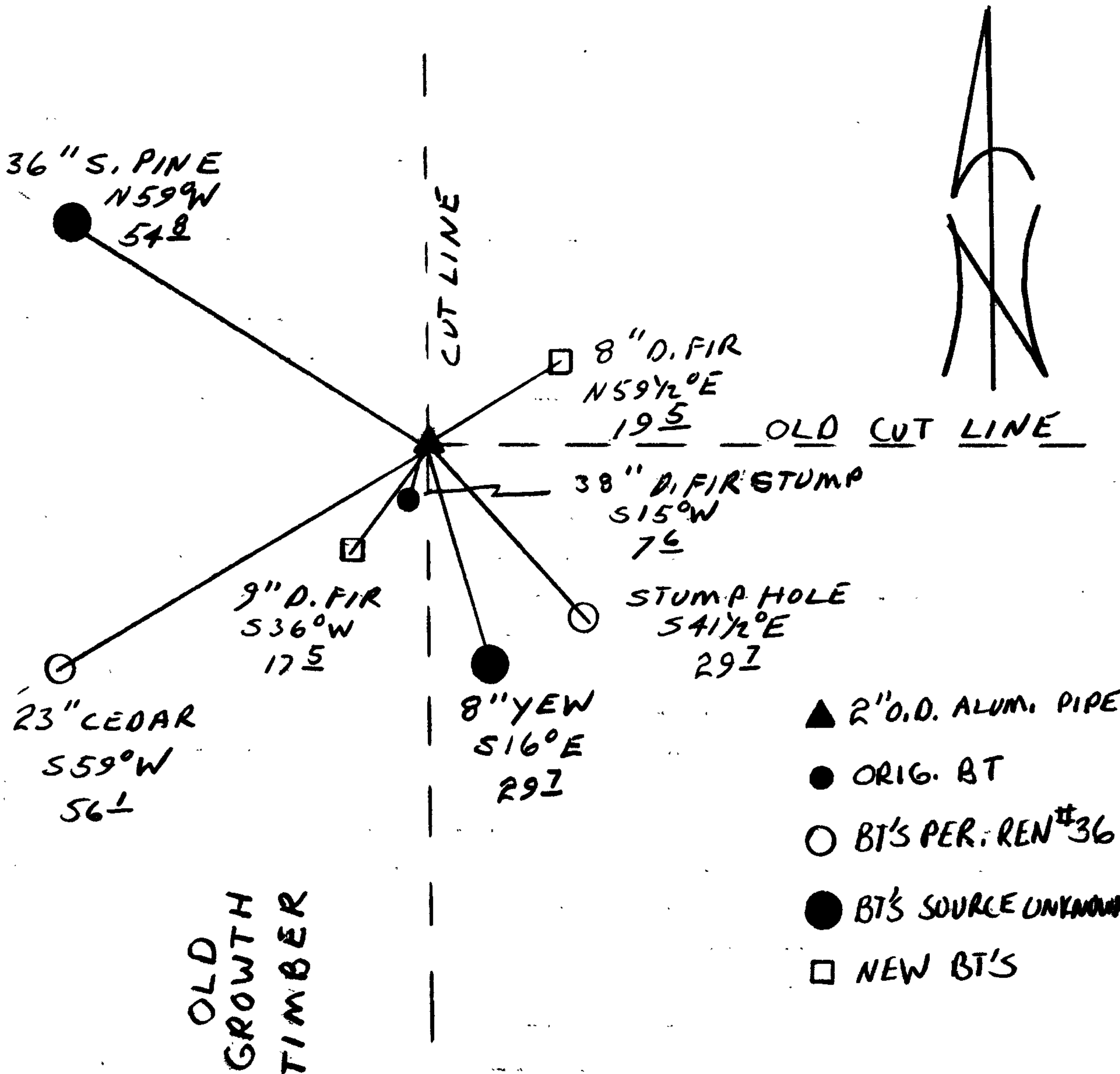
New Accessories

9" D. FIR DOUBLE BLAZED AND SCRIBED "1/4 S11CS BT"
BEARS S36°W, 17.5 FT.

8" D. FIR DOUBLE BLAZED AND SCRIBED "1/4 S12CS BT"
BEARS N59 1/2°E, 19.5 FT.

Sketch of Monument, Accessories, and General Area

Location & Comments



Comp. Declin. 18° E
 Agency DCSO
 Party Chief RANDALL W SMITH
 Notekeeper Randall W Smith
 Witnesses STEPHEN J FLAUSIE

Address _____

Surveyor's Seal
 REGISTERED
 PROFESSIONAL
 LAND SURVEYOR

Larry E. Monrean

OREGON
 JULY 13, 1979
 LARRY E. MONREAN
 #1830