

GOVERNMENT CORNER RESTORATION FORM

Township 245 Range 6W Sec. 15 County DOUGLAS

State OREGON Date MAY 2, 1988 No. \_\_\_\_\_

Corner Designation

1/4 S15  
S22

- Condition Report Only
- Not Found
- Renewed
- Unrecorded
- Surveyed In
- Referenced Out

Previous Renewals NONE, 1973 BLM RESURVEY

Monument(s) Found: (Condition and Source)

FROM BLM RESURVEY A 3 1/4 INCH  
DIAMETER BRASS CAP (MARKED AS AT RIGHT)  
ON A 2 1/2 INCH O.D. IRON PIPE FIRMLY  
SET AND PROTRUDING 6 INCHES ABOVE  
GROUND.

U.S. DEPT. OF THE INTERIOR

1/4 S15  
S22

T245 R6W

1973

BUR. OF LAND MANAGEMENT

Accessories Found:

A SEARCH WAS MADE FOR ORIGINAL BEARING TREES IN AREA  
NO EVIDENCE WAS FOUND.

FROM THE BLM 1973 RESURVEY TWO BEARING TREES WERE FOUND.

A WHITE OAK, 23 INS. DIAM. NOW A 2.5 INCH DIAMETER 1 FOOT TALL OAK  
STUMP WITH A PARTIALLY HEALED BLAZE, ILLEGIBLE SCRIBING VISIBLE,  
BEARS N 30° E, 199<sup>0</sup> FEET DISTANT (RECORD N 30° E, 200<sup>0</sup> FEET).

A WHITE OAK, 15 INS. DIAM. NOW A 4 FOOT HIGH DOUBLE TRUNKED (ABOVE BASE) OAK  
STUMP (WITH THE EASTERLY SCRIBED TRUNK BEING 15 INCHES IN DIAM)  
WITH A PARTIALLY HEALED BLAZE, ILLEGIBLE SCRIBING VISIBLE, BEARS  
S 78° W, 121<sup>0</sup> FEET DISTANT (AS PER RECORD).

RENEWAL

Monument Set (Procedure and Description)

Monument Detail

MONUMENT POSITION IS PERPETUATED AS FOUND. DISTANCE ERROR TO NORTHEAST BEARING TREE COULD BE A POSSIBLE SLOPE DISTANCE REDUCTION PROBLEM.

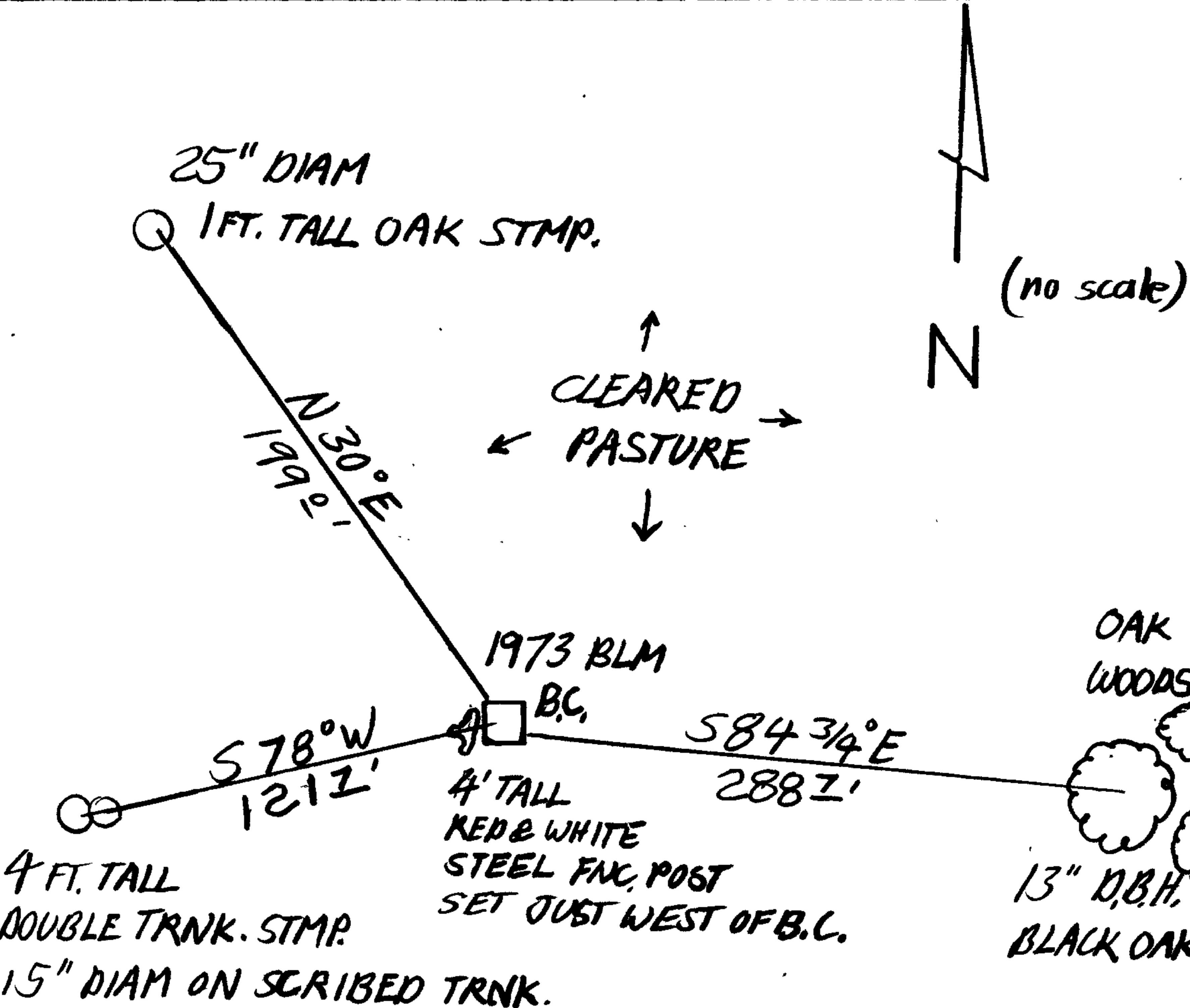
N/A

New Accessories

NEW BEARING TREE TAGS ARE NAILED ON FOUND BEARING TREE STUMPS.

A NEW BEARING TREE IS MARKED. A 13 INCH D.B.H. BLACK OAK SCRIBED "1/4 S 22 CS BT" ON A DOUBLE BLAZE BEARS S 89 3/4° E, 288.7 FEET DISTANT.

Sketch of Monument, Accessories, and General Area



Location & Comments

IN WIDE HOLLOW BETWEEN SOUTHERLY AND EASTERLY FACING RIDGES AND APPROXIMATELY 150 FEET LOWER THAN RIDGETOP. AREA IS CLEARED FOR GRAZING. NEW BEARING TREE IS IN LARGE REMAINING WOODLOT EASTERLY FROM MONUMENT.

Comp. Declin. 18° E  
Agency DCSD  
Party Chief STEPHEN JOHN FLAISE  
Notekeeper Stephen John Flaese  
Witnesses R.W. SMITH

Address

REGISTERED Surveyor's Seal  
PROFESSIONAL  
LAND SURVEYOR

Larry E. Monrean

OREGON  
JULY 13, 1979  
LARRY E. MONREAN  
#1830