

GOVERNMENT CORNER RESTORATION FORM

Township 22 S Range 5 W Sec. 27 County DOUGLAS

State OREGON Date MAY 4, 1988 No. _____

Corner Designation

S28	S27
S33	S34

Condition Report Only
 Not Found
 Renewed
 Unrecorded
 Surveyed In
 Referenced Out

Previous Renewals # 47, 1982 BLM RESURVEY

Monument(s) Found: (Condition and Source)

A 2 1/2 INCH DIAMETER BRASS CAP (MARKED AS AT RIGHT) ON A 1 1/4 INCH O.D. IRON PIPE FIRMLY SET AND PROTRUDING 17 INCHES ABOVE GROUND.

COUNTY SURVEYOR'S OFFICE
T225

S28	S27
S33	S34

R5W

1958

Accessories Found:

EVIDENCE OF TWO ORIGINAL BEARING TREES FOUND. A MAPLE 20 INS. DIAM., NOW A MAPLE CLUSTER WITH TWO PREDOMINANT TRUNKS THE NORTHERLY ONE OF WHICH HAS A 26 INCH DBH AND HAS POSSIBLE EVIDENCE OF OPENED BLAZES BEARS S 08° E 79 1/2 FEET DISTANT (AS PER ORIGINAL RECORD, CENTER OF FOUND CLUSTER AGREES WELL WITH BLM RESURVEY RECORD.) A B. OAK 24 INS. DIAM. NOW A TIPPED OUT AND ROTTED 36 INCH DIAMETER 8 FOOT TALL STUMP WITH A PREVIOUSLY OPENED BUT ROTTED BLAZE IS FOUND LYING NEAR RECORD BEARING AND DISTANCE. FROM RENEWAL # 47 TWO BEARING TREES FOUND. A 10" W.O. NOW A 15 INCH D.B.H. WHITE OAK WITH A FULLY HEALED DOUBLE BLAZE BEARS S 54° W, 108 1/2 FT. DISTANT (AGREES WITH BLM RESURVEY RECORD) BYRON RECORD S 56° W, 109.0 FEET DISTANT). A 24" MAPLE NOW A CUT MAPLE WITH A VERY LOW CUT STUMP AND A 29 INCH DIAMETER PORTION OF THE TRUNK REMAINING WITH A PORTION OF A FULLY HEALED BLAZE SHOWING. THE CENTER OF THE FOUND MAPLE ROOT CROWN BEARS N 33 1/2° W, 58 1/2 FEET DISTANT (AGREES WITH BLM RECORD, BYRON RECORD ALSO AGREES REASONABLY WITH SAME STUMP REMAINS).

FROM BLM RESURVEY A BEARING OBJECT AND A REFERENCE MONUMENT ARE FOUND. A POWER POLE MARKED S-61 BEARS N 80 1/2° E, 41 1/2 FEET DISTANT (RECORD) N 82 1/4° E, 42 1/2 FEET). A 3 1/4 INCH BRASS CAP (MARKED AS SHOWN IN FOLLOWING MONUMENT DETAIL SECTION) ON A 2 1/2 INCH O.D. IRON PIPE FIRMLY SET AND PROTRUDING 5 INCHES ABOVE GROUND.

#185 X

RENEWAL

ACCESSORIES FOUND CONT'D.

Monument Set (Procedure and Description)

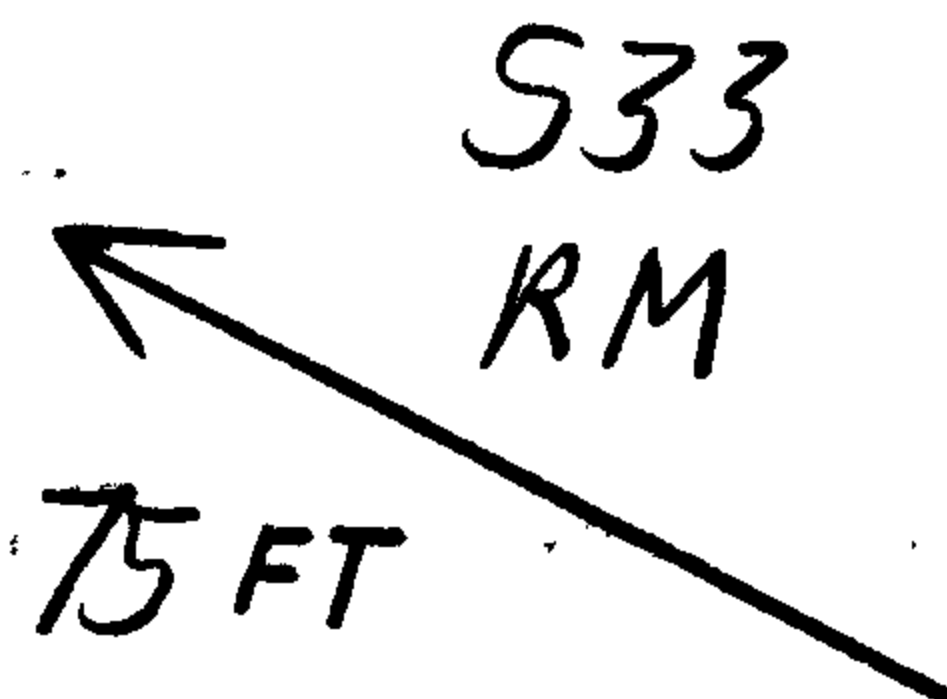
REFERENCE MONUMENT BEARS S61 1/2° E,
74 2 FEET DISTANT (RECORD S60° W, 74 2 FT.)

Monument Detail

OF REFERENCE MON.

U.S. DEPT. OF INTERIOR

T22S R5W



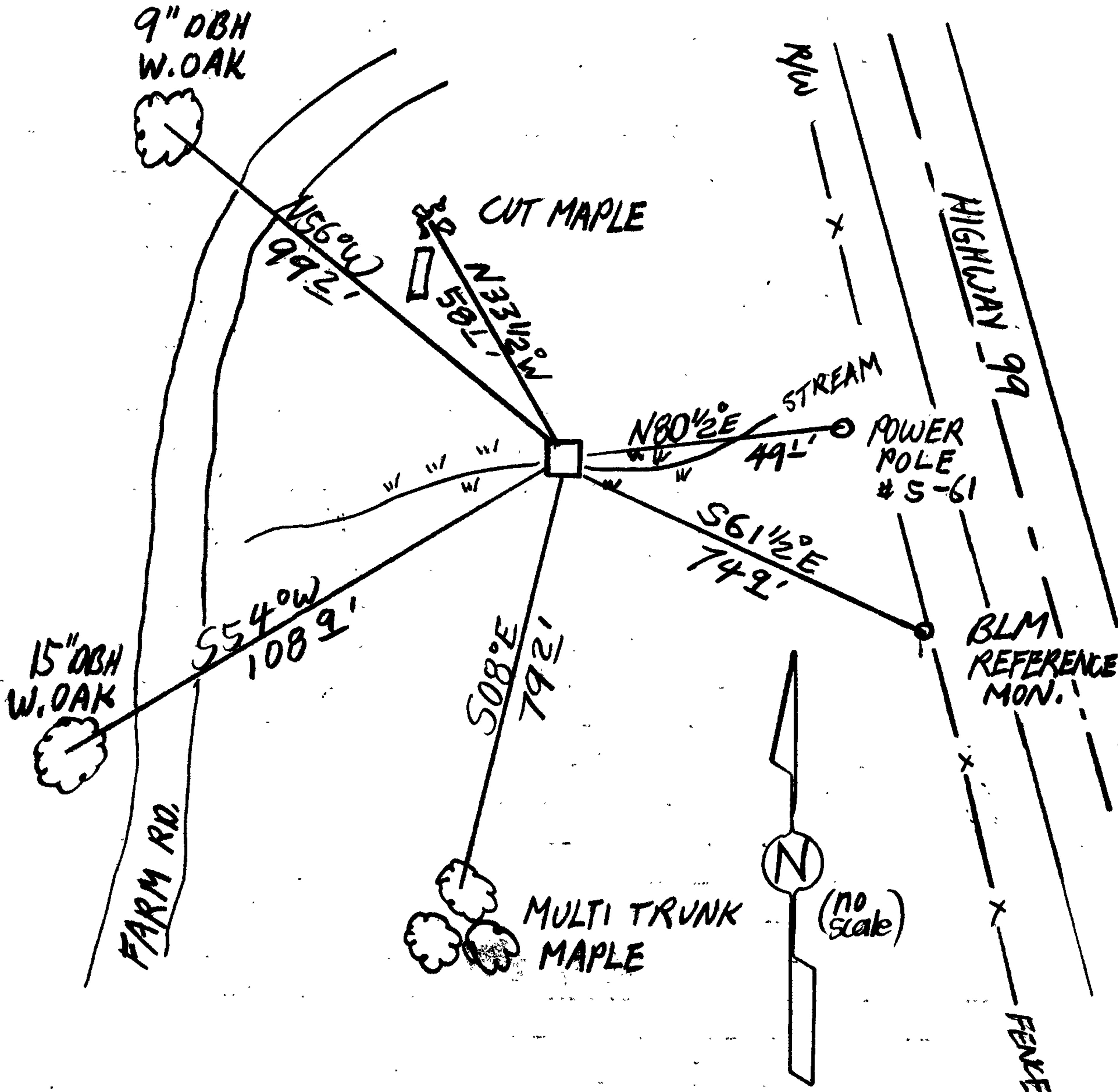
1983

BUR. OF LAND MANAGEMENT

New Accessories

A 9 INCH DBH. WHITE OAK SCRIBED T22S R5W S28 CS BT ON A
DOUBLE BLAZE BEARS N56° W, 99 2 FEET DISTANT.

Sketch of Monument, Accessories, and General Area



Location & Comments

NEAR EDGE OF SMALL
MARSHY CREEK AND APPROX.
90 FT WEST FROM STATE
HIGHWAY 99.

Comp. Declin. 18° E
Agency DCSD
Party Chief STEPHEN JOHN FLAUSE
Notekeeper Stephen John Flause
Witnesses R. W. SMITH

Address

Surveyor's Seal

REGISTERED
PROFESSIONAL
LAND SURVEYOR

July 13, 1979

OREGON
JULY 13, 1979
LARRY E. MONREAN
#1830