

SURVEY FOR YONCALLA SCHOOL DISTRICT

FILED *ff*
FEB 29 1988
COUNTY SURVEYOR
DOUGLAS COUNTY, ORE.
7

C.S. FILE NO. 62/51
MAP FILE NO. M105-60

IN THE SW1/4 AND SE1/4 OF S31 T22S R4W, W.M.

SURVEYED BY DOUGLAS COUNTY SURVEYOR'S OFFICE
FRANCIS L. INGRAM COUNTY SURVEYOR
FEBRUARY 1988

LEGEND

- FOUND IRON ROD AS NOTED
- ⊙ FOUND DCSO 2 1/2" BRASS CAP ON A 1 1/4" O.D. IRON PIPE
- SET 5/8" X 30" IRON ROD WITH A DCSO PLASTIC CAP, MARKED "DOUG. CO. SURVEYOR"
- [] STATE HWY. MAP AND DEED RECORD (BK 899 PG 480)
- () COUNTY ROAD NO. 8 RIGHT OF WAY MAP
- 🌿 LOW LAND, SWAMP AREA

NOTE: BEARINGS AND DISTANCES SHOWN ARE TRUE. SURVEY BASED ON THE OREGON STATE PLANE COORDINATE SYSTEM, SOUTH ZONE, USING THE FOLLOWING CONTROL STATIONS:

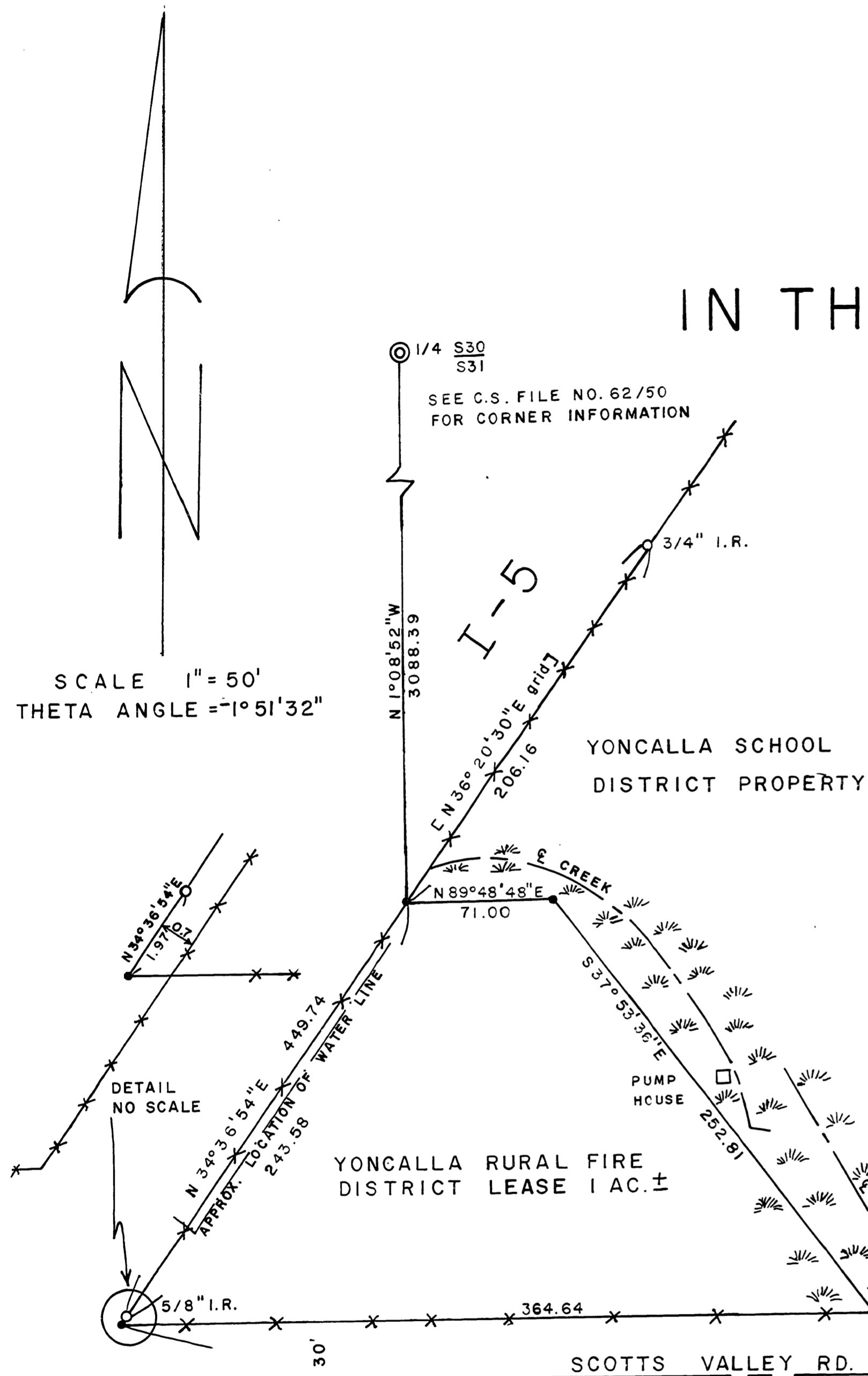
EVE —	N	719,317.43
	E	1,279,479.87
ADAM —	N	720,420.57
	E	1,280,551.61

DISTANCES LISTED BELOW ARE MEASURED PERPENDICULAR TO LINE; BEARINGS ARE FROM LINE TO MONUMENTS:

- Ⓐ N 0° 11' 12" W, 0.54 FT.
- Ⓑ N 0° 11' 12" W, 0.67 FT.

NOTE: DISTANCES SHOWN ON MAP TO MONUMENTS Ⓐ AND Ⓑ ARE TO POINTS WHICH ARE THE INTERSECTIONS OF THE LINE AND PERPENDICULARS THROUGH THE MONUMENTS.

SEE C.S. FILE NO. 62/51 FOR NARRATIVE



REGISTERED
PROFESSIONAL
LAND SURVEYOR

Francis L. Ingram

OREGON
JULY 11, 1989
FRANCIS L. INGRAM
902

C.S. FILE NO. 62/51
MAP FILE NO. M105-60



FILED

FEB 29 1988

COUNTY SURVEYOR
DOUGLAS COUNTY, ORE.

February 1988

This narrative corresponds with Survey Map No. M 105-60

Narrative of survey for the Yoncalla School District in SE $\frac{1}{4}$ and SW $\frac{1}{4}$ of Section 31, Township 22 South, Range 4 West, W.M.

PURPOSE:

To locate and monument lines describing the lease of 1 acre by the Yoncalla School District to the Yoncalla Rural Fire District.

SURVEY INFORMATION USED:

- A 1952 Oregon State Highway Map Drawing 7B-13-6 filed in the Douglas County Surveyor's Office as Oregon State Highway Map F7.
- A 1952 Oregon State Highway Map Drawing 7B-14-15 filed in the Douglas County Surveyor's Office as Oregon State Highway Map F8.
- A 1958 Douglas County Road Right-of-Way survey of County Road #8.

EQUIPMENT USED:

To run the main traverse and to set monuments.
Kern DKM2-AE One Second Theodolite
Lietz Sokkisha Red-1 EDM
100 ft. and 200 ft. steel chain

To locate the centerline of surface water drainage.
Keuffel & Esser staff compass
100 ft. cloth tape

PROCEDURES:

Third Order Class II Procedures were used to run the main traverse and set monuments.

The Basis of Bearings was determined between control points EVE and ADAM.

EVE N. 719,317.43
 E. 1,279,479.87

ADAM N. 720,420.57
 E. 1,280,551.61

THETA ANGLE = $-1^{\circ} 51' 32''$
SCALE FACTOR = 0.99992444

FILED

fl

FEB 29 1988

COUNTY SURVEYOR
DOUGLAS COUNTY, ORE.

Found monuments along the east right-of-way of Interstate Highway 5 and found monuments along the north right-of-way of County Road No. 8 were used to establish the direction of said right-of-way lines which were projected to a point of intersection. The stated point of intersection was monumented and established as the southwest corner of the lease property as requested by the Yoncalla School District. Three monuments to establish the remaining lease corners were set, one each along the two above mentioned right-of-way lines, and one in the interior of the school district property.

DOUGLAS COUNTY SURVEYOR'S OFFICE
FRANCIS L. INGRAM
COUNTY SURVEYOR

REGISTERED
PROFESSIONAL
LAND SURVEYOR

Francis L. Ingram

OREGON
JULY 11, 1969
FRANCIS L. INGRAM
902